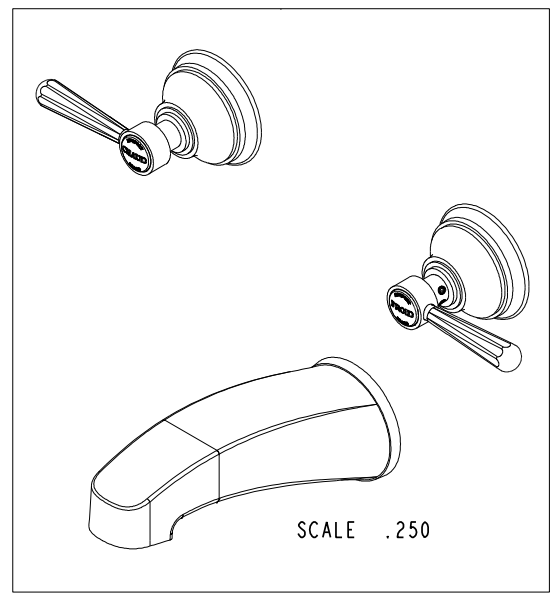
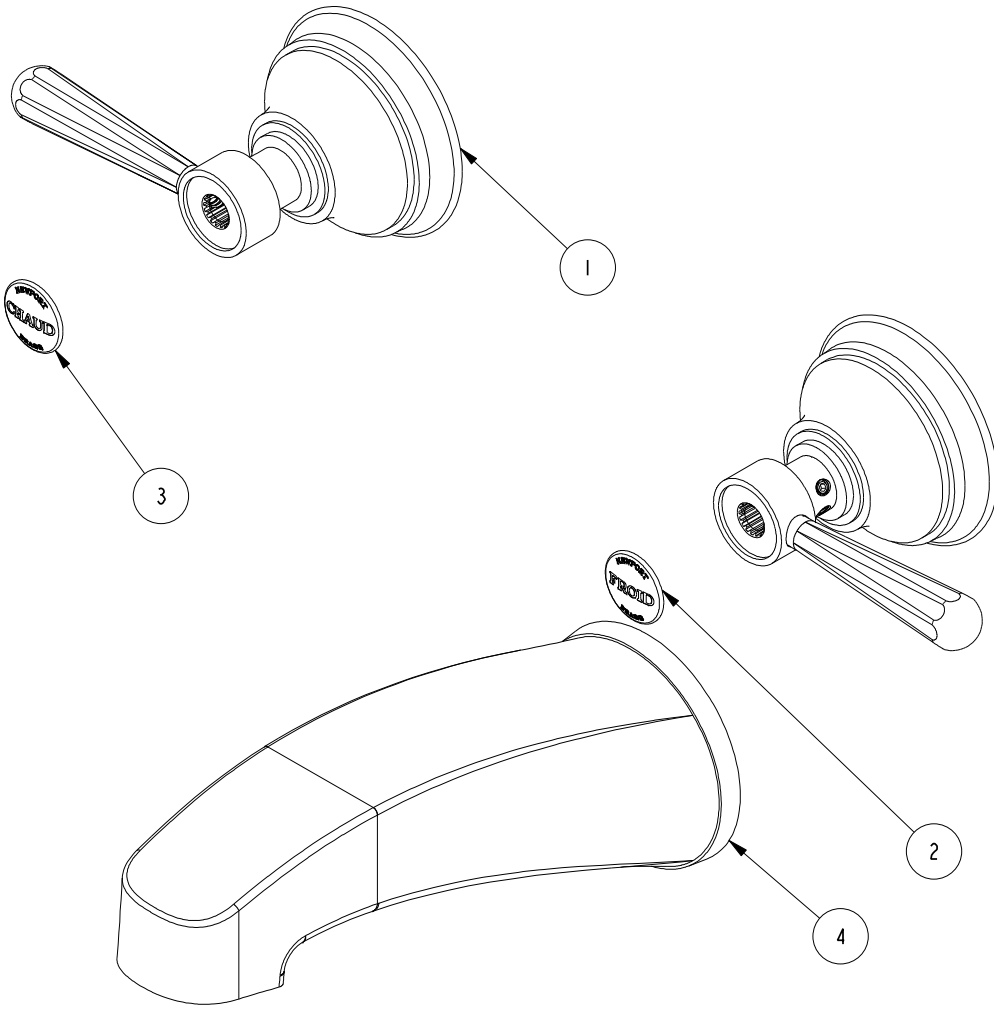


NOTES:

1. TO INSPECT ASSEMBLY, FOLLOW FIRST ARTICLE AND IN PROCESS INSPECTION SHEET.

BILL OF MATERIAL (CURRENT LEVEL)				
ITEM	PT/ASSY	DESCRIPTION	TYPE	QTY.
1	3-280L	HANDLE/ESCUTCHEON ASM	ASSEMBLY	2
2	1-131	FROID BUTTON W/ADH. TAB	ASSEMBLY	1
3	1-130	CHAUD BUTTON W/ADH. TAB	ASSEMBLY	1
4	2-564	TUB SPOUT	ASSEMBLY	1



ZONE	REV	DESCRIPTION	DATE	APPROVED	TESTING	ASSEMBLY	PLATING	POLISHING	MACHINING	TOOLING FIXTURE #	APPLICATION
-	B	EN-3961-2	05/22/20	R.S.	-	-	-	-	-	-	-
-	A	EN-3072	06/07/16	J.M.	-	-	-	-	-	-	-
-	-	EO-0299	03/04/04	-	-	-	-	NEXT ASSY	USED ON	-	-
-	-	-	-	-	-	-	-	-	-	-	REMOVE ALL BURRS AND SHARP EDGES

COPYRIGHT 2005 BRASSTECH, INC. THESE DRAWINGS AND THE DESIGNS DEPICTED HEREIN ARE THE PROPRIETARY PROPERTY OF BRASSTECH. ANY USE OR REPRODUCTION IS SUBJECT TO THE EXPRESS APPROVAL OF BRASSTECH. UNAUTHORIZED USE IS STRICTLY PROHIBITED. ALL RIGHTS RESERVED.

UNITS ARE: INCHES [MM]
TOLERANCES ARE:
FRACTIONS DECIMALS ANGLES
 $\pm 1/16"$.X $\pm .1$ [2,5] $\pm 1^\circ$
.XX $\pm .06$ [1,5]

(X.XXX) DENOTES CRITICAL DIMS.
ALL THREADS ARE CRITICAL

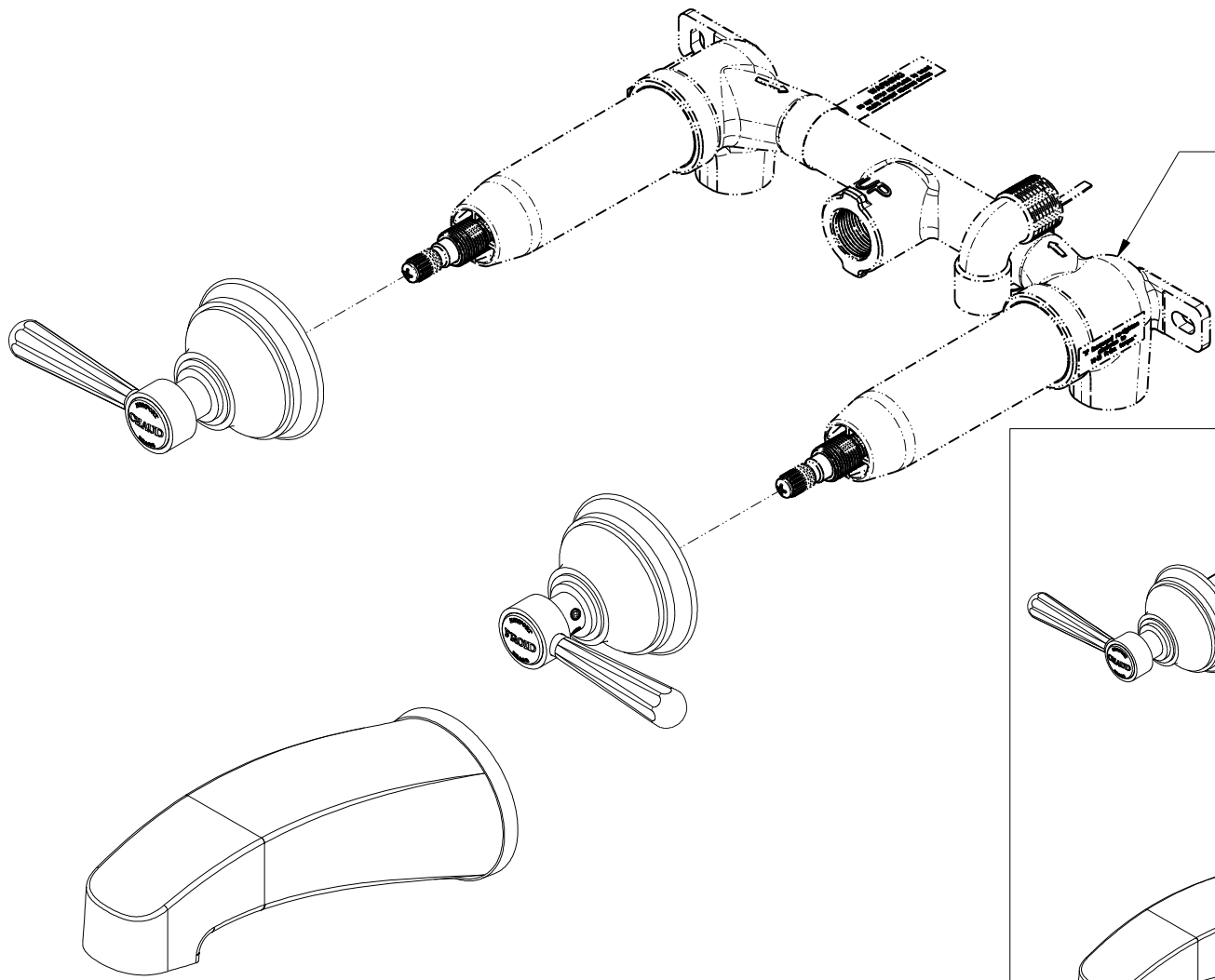
DRAWN JIMSON 05/22/20
CHECKED R.S. 05/22/20
APPROVED R.S. 05/22/20

BRASSTECH 2001 CARNEGIE AVE. SANTA ANA, CA 92705 (949) 417-5207
INCORPORATED

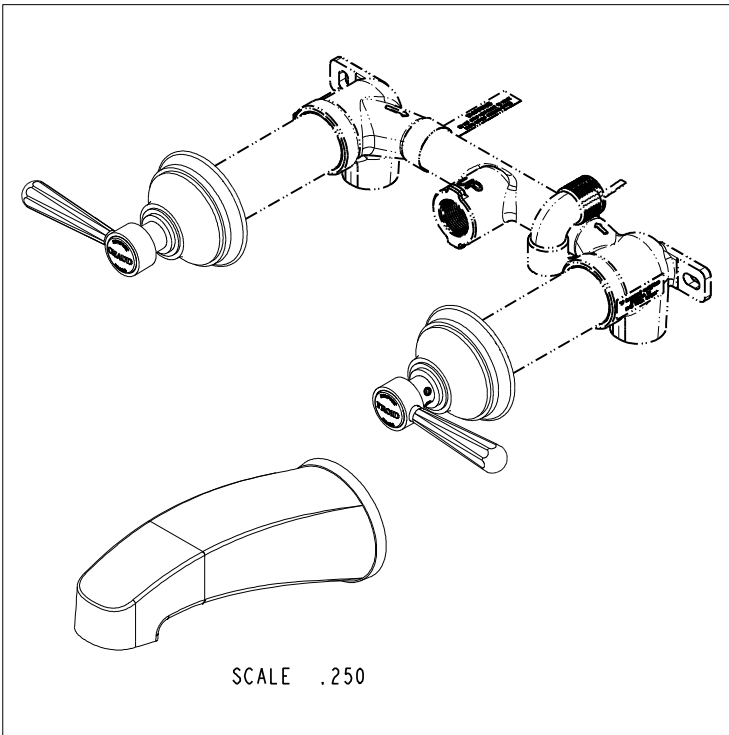
TRIM KIT (3-1665)

DWG NO. **3-1665** REV B

SCALE .500 REF. - SHEET 1 OF 3

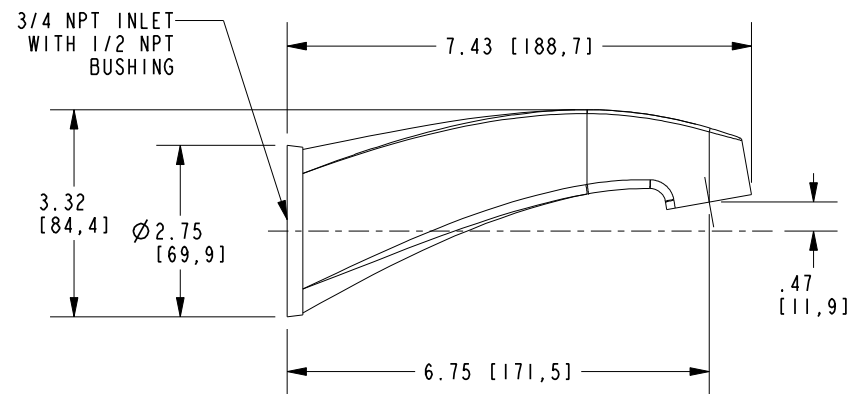
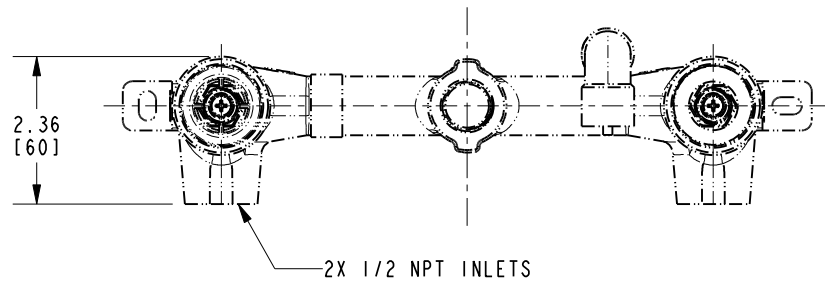
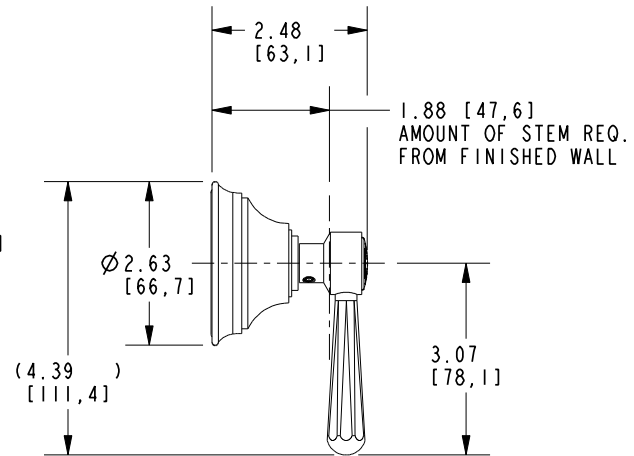
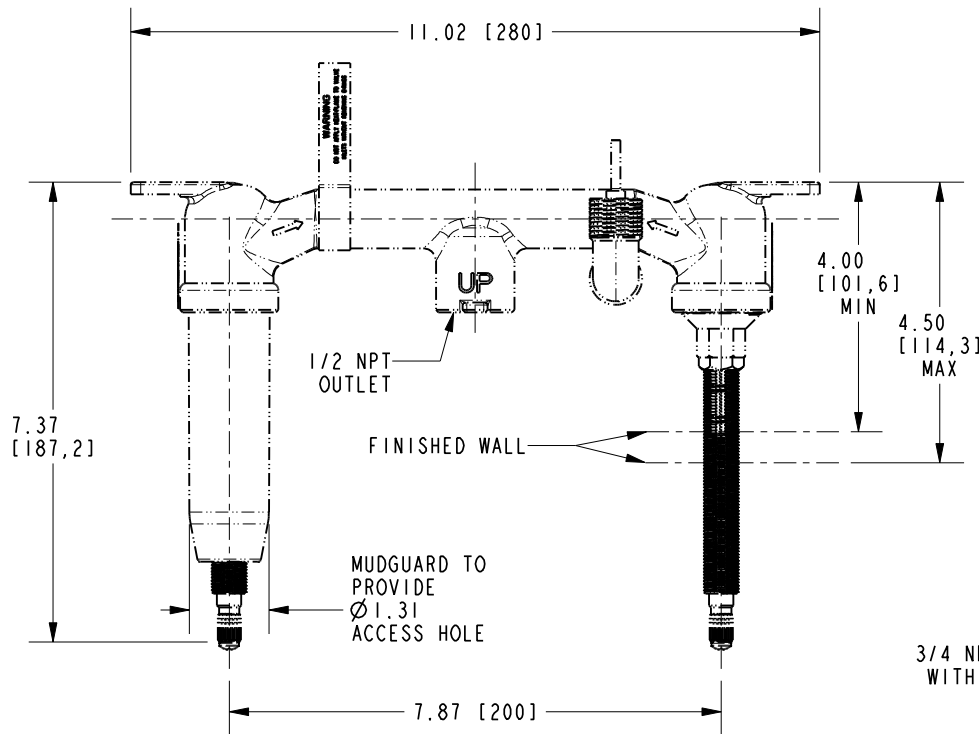


PN: 1-500U
SOLD SEPARATELY



SCALE .250

BRASSTECH		2001 CARNEGIE AVE. SANTA ANA, CA 92705 (949) 417-5207	
INCORPORATED			
DWG NO.	3-1665	REV	B
SCALE .375	REF. -	SHEET 2	OF 3



BRASSTECH		2001 CARNEGIE AVE. SANTA ANA, CA 92705 (949) 417-5207	
INCORPORATED			
DWG NO.	3-1665	REV	B
SCALE	.325	REF.	-
		SHEET	3 OF 3