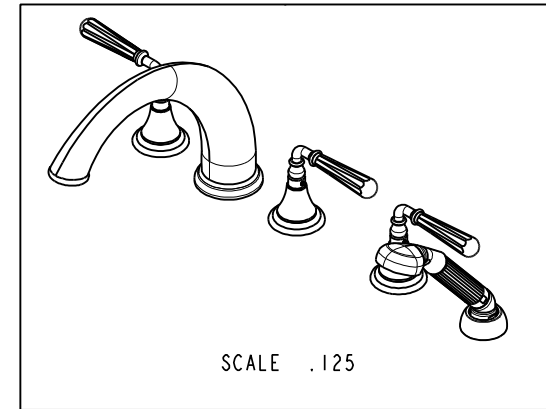
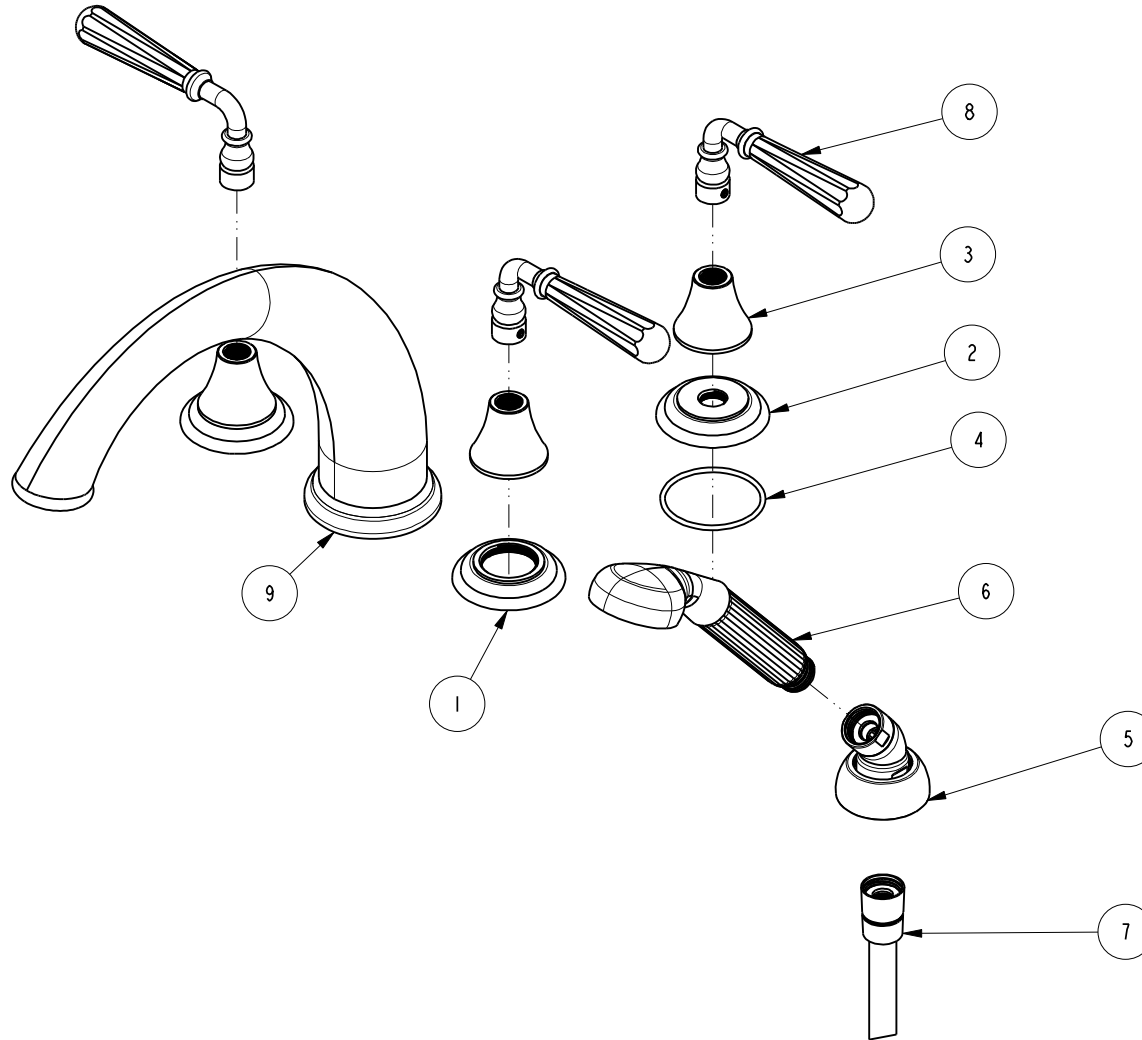


NOTES:

1. TO INSPECT ASSEMBLY, FOLLOW FIRST ARTICLE AND IN PROCESS INSPECTION SHEET.

BILL OF MATERIAL (CURRENT LEVEL)

ITEM	PT/ASSY	DESCRIPTION	TYPE	QTY.
1	12171	ESCUTCHEON, ROMAN TUB	PART	2
2	10050	ESCUTCHEON WALL VALVE	PART	1
3	10095	ESCUTCHEON, 900 SERIES	PART	3
4	91753	O-RING, # 2-136, EP, 50 DURO - GREY	PART	3
5	6-289	DECK FLANGE TRIM	ASSEMBLY	1
6	280	HAND SHOWER WITH GROOVE	ASSEMBLY	1
7	284	59 IN. SPIRAL SHOWER HOSE	ASSEMBLY	1
8	2-470	LEVER HANDLE ASM W/8 FLATS	ASSEMBLY	3
9	3-178	ROMAN TUB SPOUT	ASSEMBLY	1



-	E	EN-4300u	02/02/21	R.S.
-	D	EN-3722	02/08/19	C.G.
-	C	EN-3222	12/04/17	J.A.
-	B	EN-2032	01/07/14	-
-	A	EN-2519	04/29/13	-
-	-	EN-2169	09/12/12	-
ZONE	REV	DESCRIPTION	DATE	APPROVED

COPYRIGHT 2005 BRASSTECH, INC. THESE DRAWINGS AND THE DESIGNS DEPICTED HEREIN ARE THE PROPRIETARY PROPERTY OF BRASSTECH. ANY USE OR REPRODUCTION IS SUBJECT TO THE EXPRESS APPROVAL OF BRASSTECH. UNAUTHORIZED USE IS STRICTLY PROHIBITED. ALL RIGHTS RESERVED.

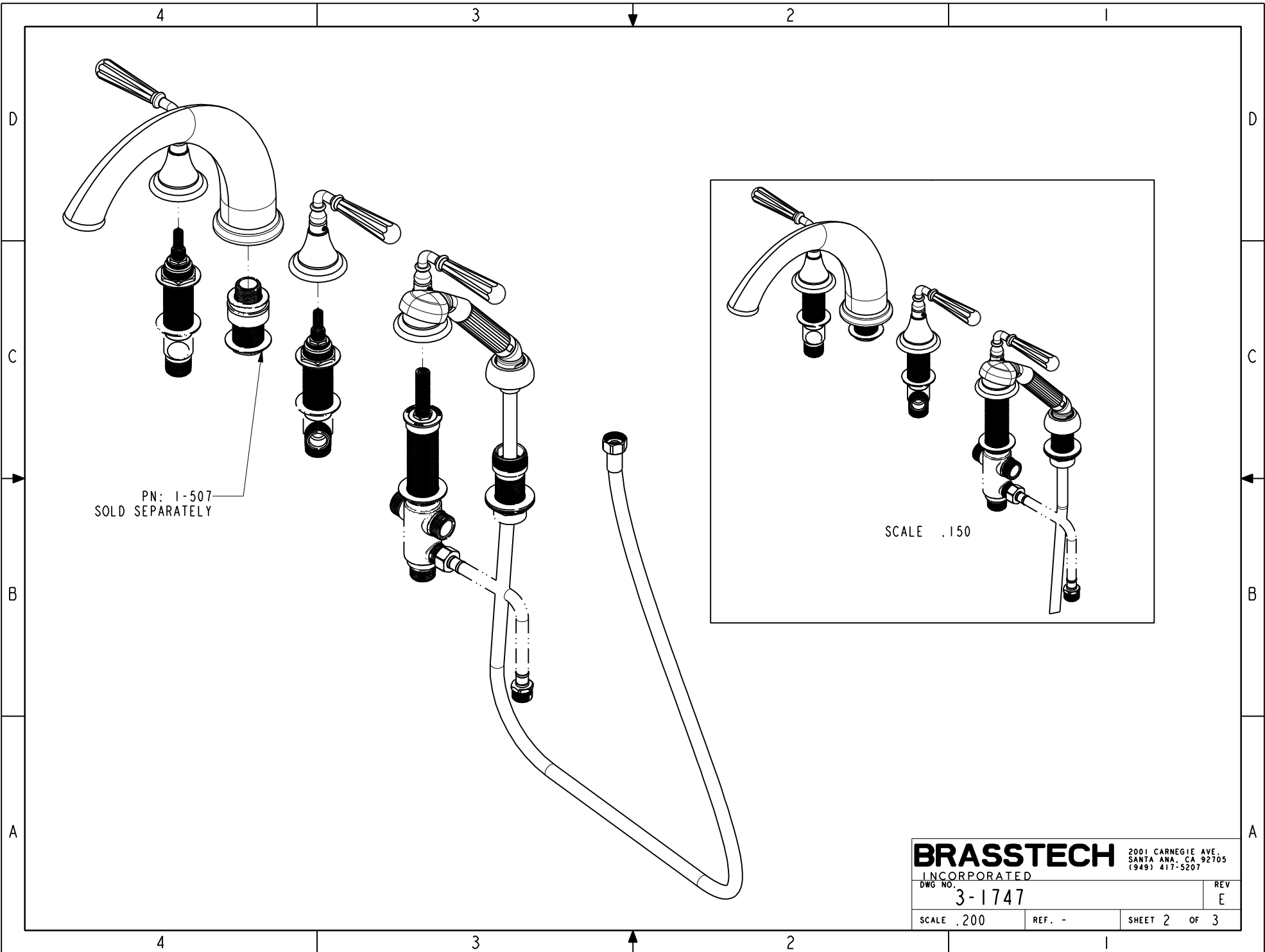
TESTING	-	-	-
ASSEMBLY	-	-	-
PLATING	-	-	-
POLISHING	-	NEXT ASSY	USED ON
MACHINING	-	APPLICATION	
TOOLING FIXTURE #	REMOVE ALL BURRS AND SHARP EDGES		

UNITS ARE: INCHES [MM]		
TOLERANCES ARE:		
FRACTIONS DECIMALS	ANGLES	
±1/16"	±1°	
.X ±.1 [2,5]		
.XX ±.06 [1,5]		
(X.XXX) DENOTES CRITICAL DIMS. ALL THREADS ARE CRITICAL		
DRAWN	JINSON	02/02/21
CHECKED	R.S.	02/02/21
APPROVED	R.S.	02/02/21

BRASSTECH 2001 CARNEGIE AVE. SANTA ANA, CA 92705 (949) 417-5207
INCORPORATED

TRIM KIT, 3V ROMAN TUB SET

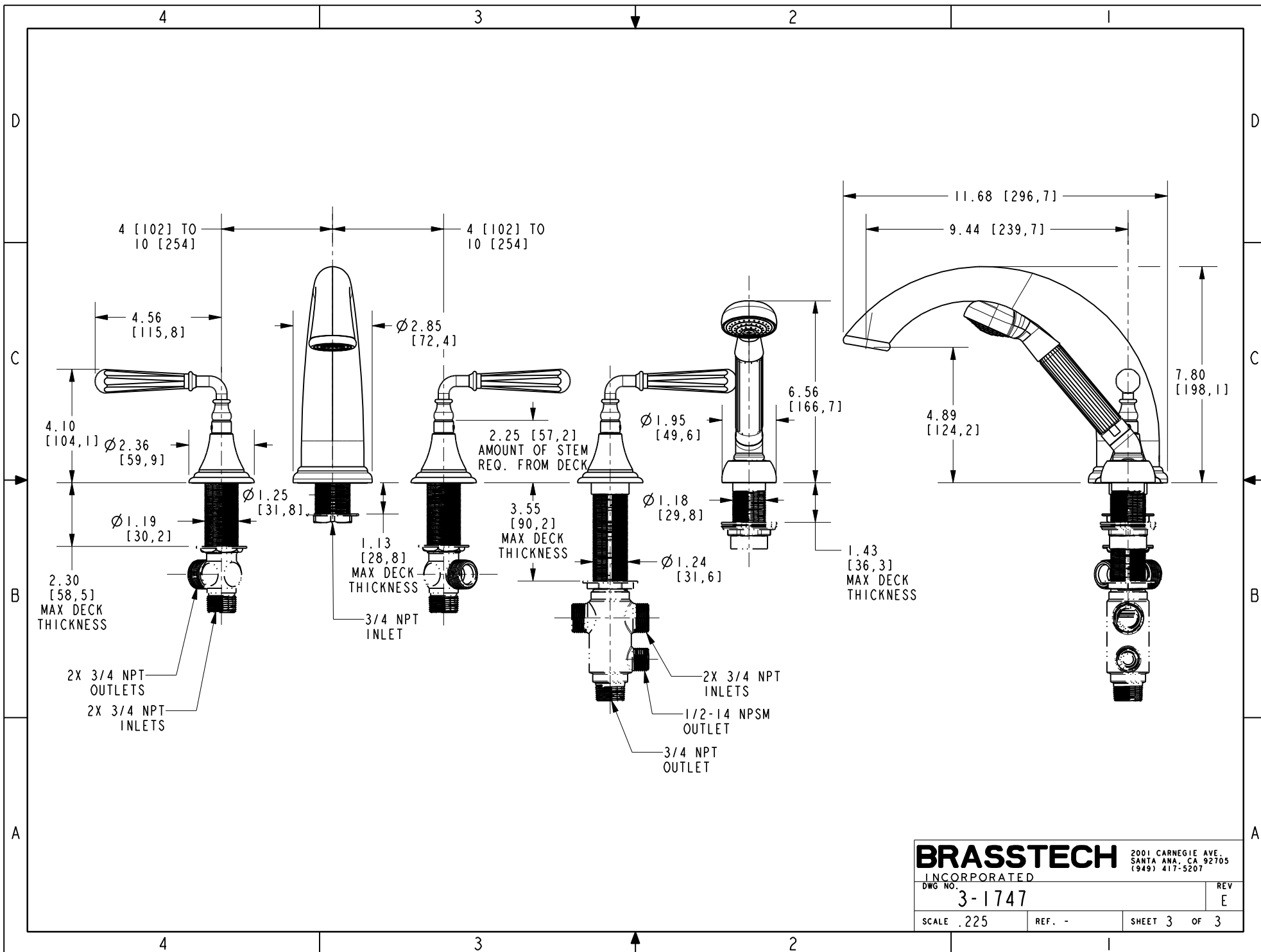
DWG NO.	3-1747	REV	E
SCALE	.250	REF.	-
SHEET	1	OF	3



PN: 1-507
SOLD SEPARATELY

SCALE .150

BRASSTECH		2001 CARNEGIE AVE. SANTA ANA, CA 92705 (949) 417-5207	
INCORPORATED			
DWG NO. 3-1747		REV E	
SCALE .200	REF. -	SHEET 2 OF 3	



BRASSTECH		2001 CARNEGIE AVE. SANTA ANA, CA 92705 (949) 417-5207	
INCORPORATED			
DWG NO. 3-1747		REV E	
SCALE .225	REF. -	SHEET 3 OF 3	