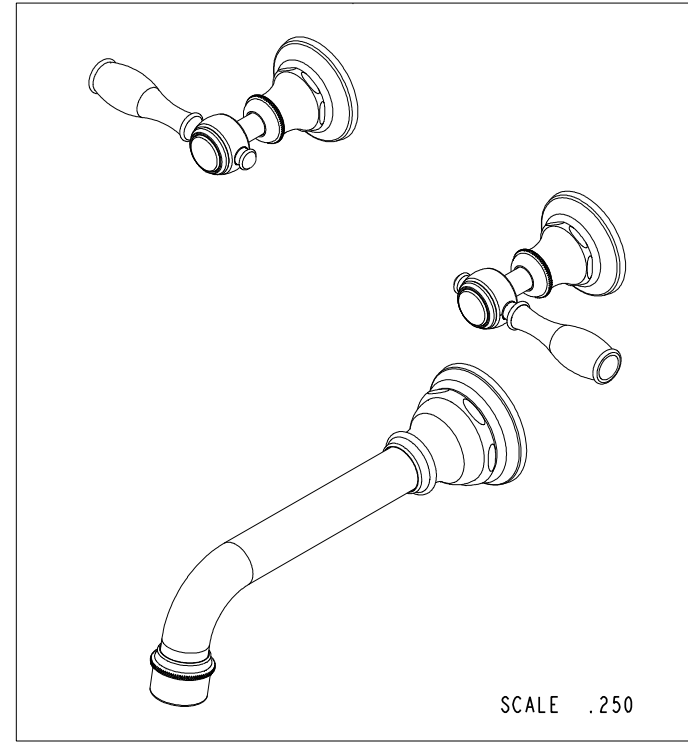
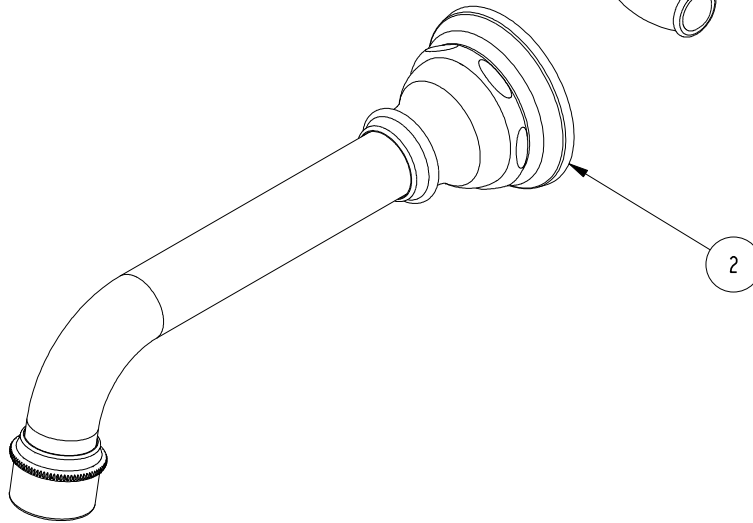
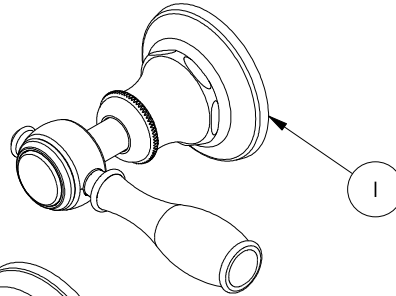
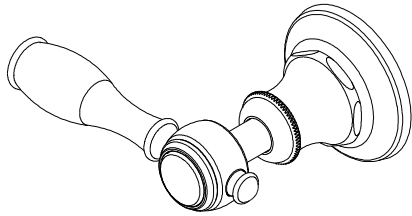


NOTES:

1. TO INSPECT ASSEMBLY, FOLLOW FIRST ARTICLE AND IN PROCESS INSPECTION SHEET.

BILL OF MATERIAL (CURRENT LEVEL)

ITEM	PT/ASSY	DESCRIPTION	TYPE	QTY.
1	3-323	LEVER HANDLE ASSEMBLY	ASSEMBLY	2
2	3-667	TUB SPOUT ASM	ASSEMBLY	1



TESTING	-	-	-
ASSEMBLY	-	-	-
PLATING	-	-	-
POLISHING	-	NEXT ASSY	USED ON
MACHINING	-	APPLICATION	
TOOLING FIXTURE #	REMOVE ALL BURRS AND SHARP EDGES		

UNITS ARE: INCHES [MM]
 TOLERANCES ARE:
 FRACTIONS DECIMALS ANGLES
 $\pm 1/16"$.X $\pm .1$ [2.5] $\pm 1^\circ$
 .XX $\pm .06$ [1.5]

(X.XXX) DENOTES CRITICAL DIMS.
 ALL THREADS ARE CRITICAL

DRAWN JIMSON 05/29/20
 CHECKED R.S. 05/29/20
 APPROVED R.S. 05/29/20

BRASSTECH
 INCORPORATED

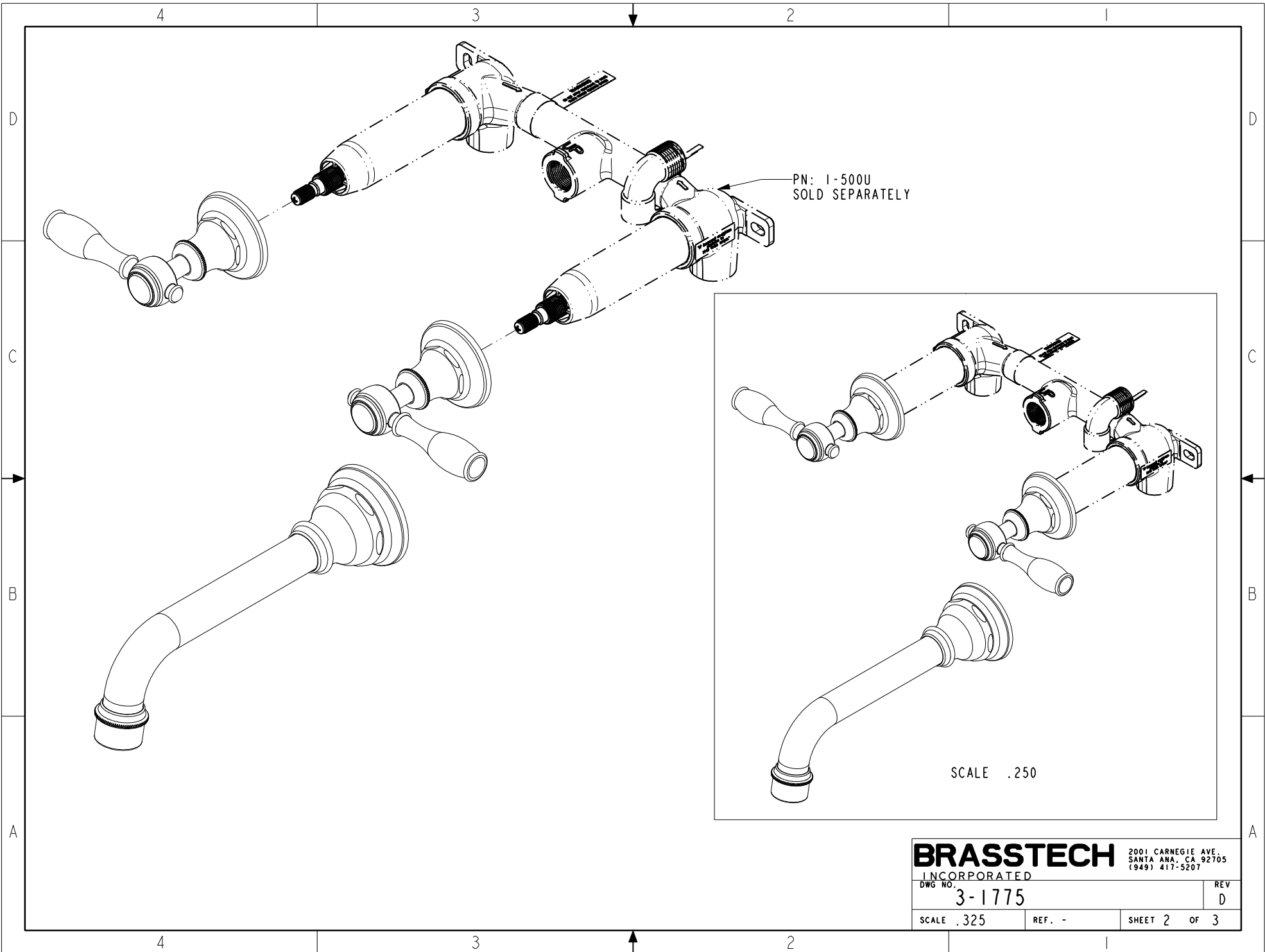
2001 CARNEGIE AVE.
 SANTA ANA, CA 92705
 (949) 417-5207

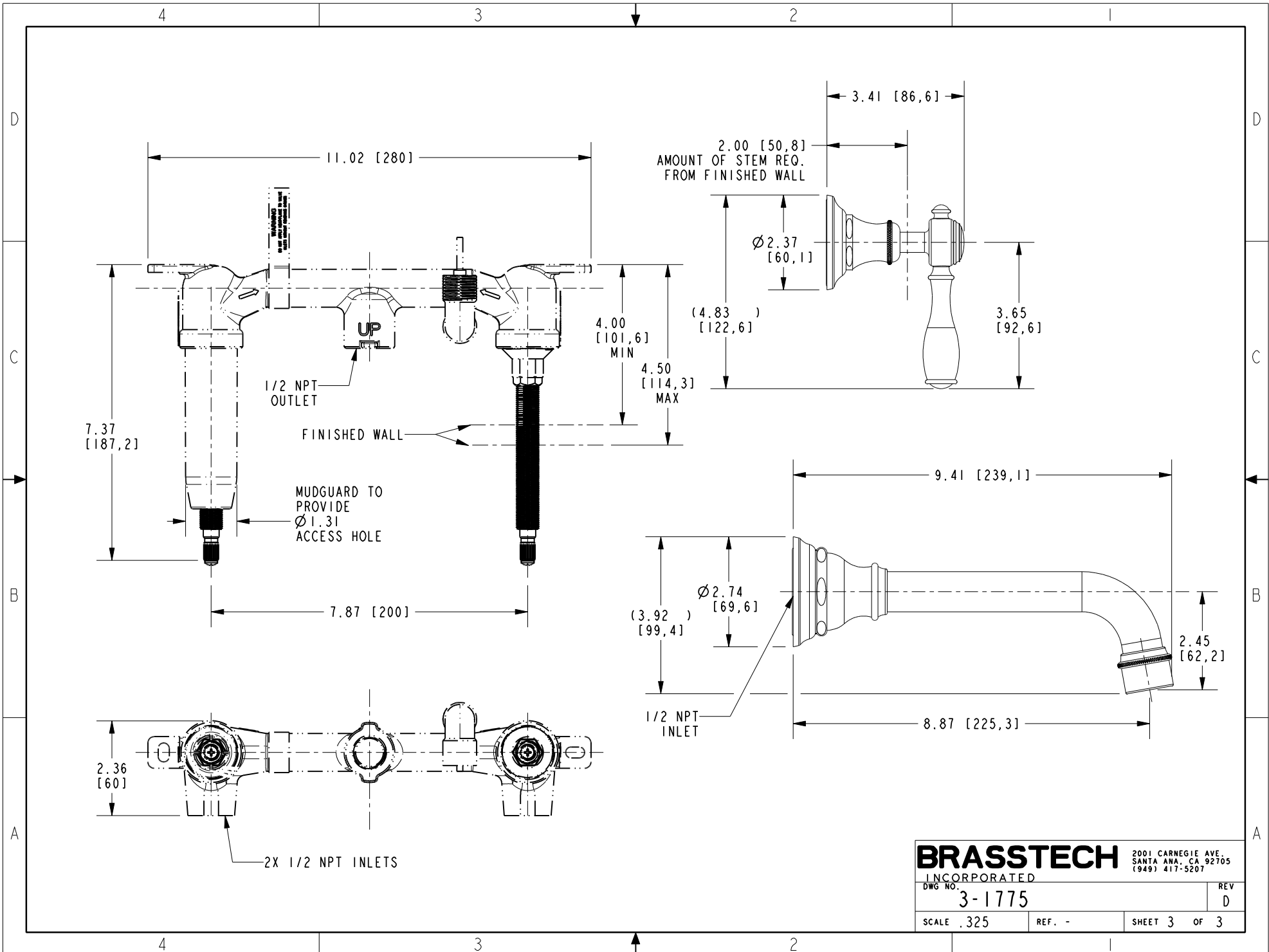
TUB TRIM, CROSS HANDLE,
 3-1675

DWG NO. 3-1775
 SCALE .375 REF. - SHEET 1 OF 3
 REV D

ZONE	REV	DESCRIPTION	DATE	APPROVED
-	D	EN-3961-2	05/29/20	R.S.
-	C	EN-3892	06/17/19	J.M.
-	B	EN-2182a	06/07/16	V.V.

COPYRIGHT 2005 BRASSTECH, INC.
 THESE DRAWINGS AND THE DESIGNS
 DEPICTED HEREIN ARE THE PROPRIETARY
 PROPERTY OF BRASSTECH. ANY USE
 OR REPRODUCTION IS SUBJECT TO
 THE EXPRESS APPROVAL OF BRASSTECH.
 UNAUTHORIZED USE IS STRICTLY
 PROHIBITED. ALL RIGHTS RESERVED.





BRASSTECH 2001 CARNEGIE AVE.
 INCORPORATED SANTA ANA, CA 92705
 (949) 417-5207

DWG NO.	REV
3-1775	D
SCALE .325	SHEET 3 OF 3