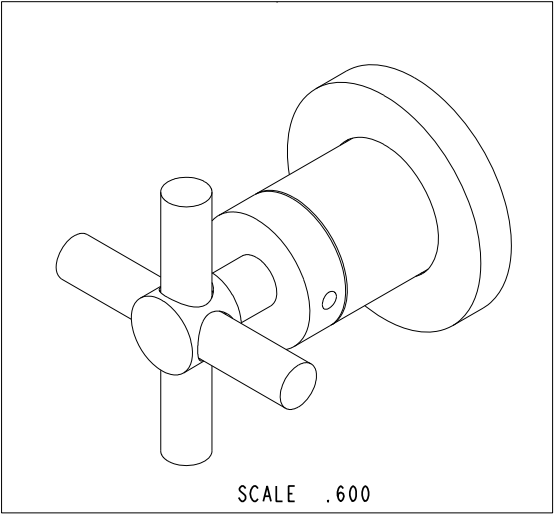
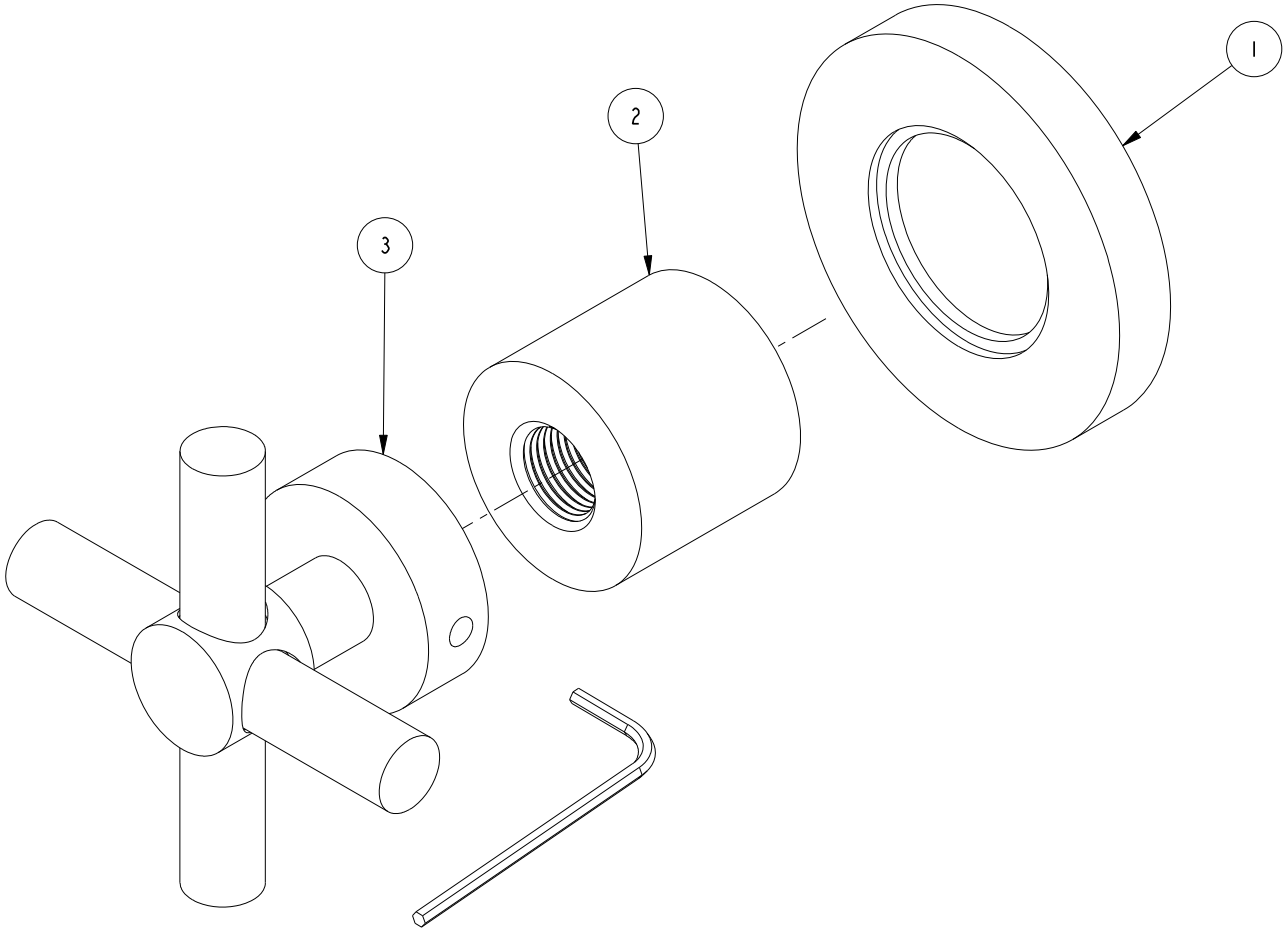


NOTES:

1. TO INSPECT ASSEMBLY, FOLLOW FIRST ARTICLE AND IN PROCESS INSPECTION SHEET.

BILL OF MATERIAL (CURRENT LEVEL)				
ITEM	PT/ASSY	DESCRIPTION	TYPE	QTY.
1	2-100	ESCUTCHEON - ASSEMBLY	ASSEMBLY	1
2	10620	BONNET	PART	1
3	2-110	CROSS HANDLE ASM	ASSEMBLY	1



C	EN-4585-1	03/01/23	R.S.
B	EN-4300j	12/16/20	R.S.
A	EN-2032	01/07/14	-
-	RELEASED	-	-
REV	DESCRIPTION	DATE	APPROVED

COPYRIGHT 2005 BRASSTECH, INC.
THESE DRAWINGS AND THE DESIGNS
DEPICTED HEREIN ARE THE PROPRIETARY
PROPERTY OF BRASSTECH. ANY USE
OR REPRODUCTION IS SUBJECT TO
THE EXPRESS APPROVAL OF BRASSTECH.
UNAUTHORIZED USE IS STRICTLY
PROHIBITED. ALL RIGHTS RESERVED.

-	-	UNITS ARE: INCHES [MM]		BRASSTECH INCORPORATED HANDLE TRIM - STOP VALVE		2001 CARNEGIE AVE. SANTA ANA, CA 92705 (949) 417-5207		
-	-	TOLERANCES ARE:						
-	-	FRACTIONS	DECIMALS					ANGLES
-	-	±1/16"	.X ±.1 [2.5] .XX ±.06 [1.5]					±1°
1400	1400	X.XXX DENOTES CRITICAL DIMS. ALL THREADS ARE CRITICAL						
NEXT ASSY	USED ON	DRAWN	JINSON	12/16/20	DWG NO.	3-227	REV C	
APPLICATION		CHECKED	R.S.	12/16/20				
REMOVE ALL BURRS AND SHARP EDGES		APPROVED	R.S.	12/16/20	SCALE 1.000	REF. -	SHEET 1 OF 2	

