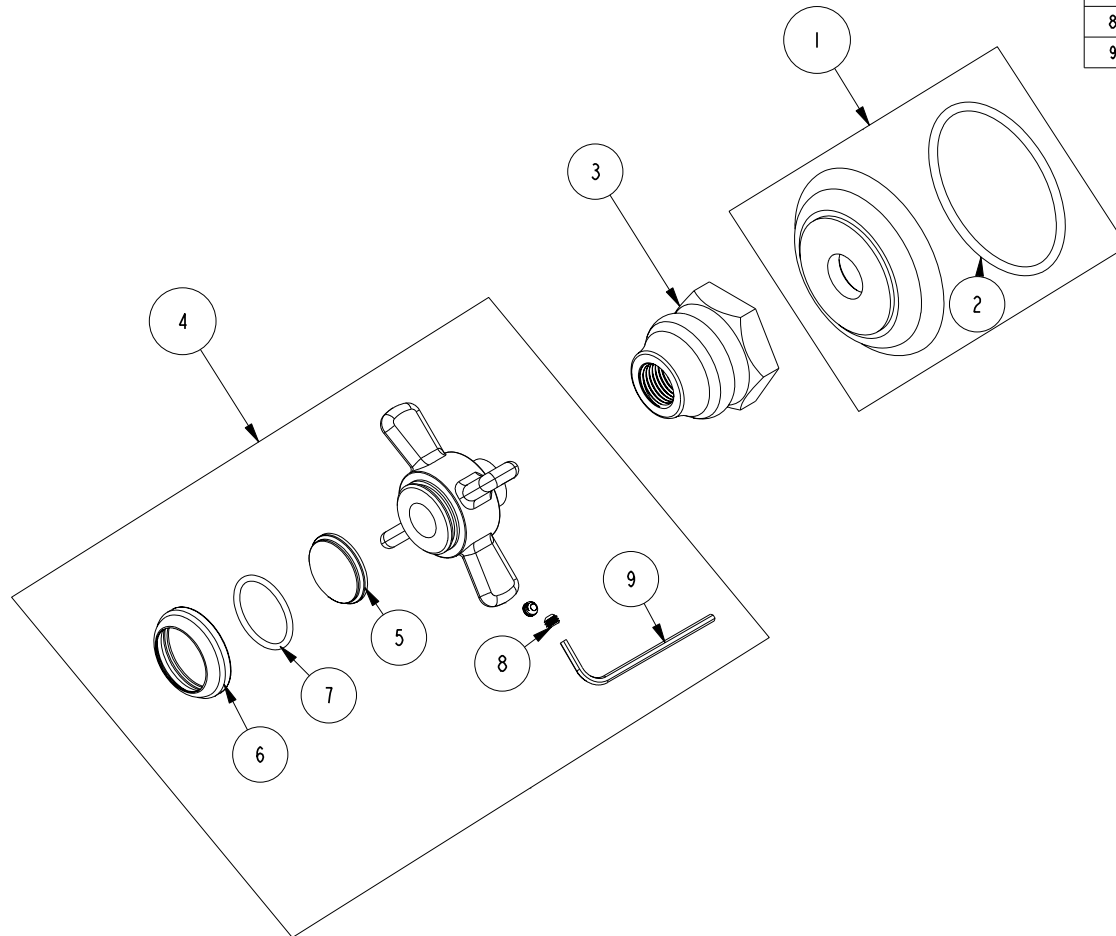


# REPLACEMENT PARTS

ITEM	PT/ASSY	SPECIFY FINISH	DESCRIPTION
1	20-742	YES	ESCUTCHEON ASM
2	91753		O-RING, # 2-136, EP, 50 DURO - GREY
3	10523	YES	HEX ESCUTCHEON BONNET
4	2-270	YES	THIN BLADE X-HANDLE - BLANK
5	10937		PORC BUTTON - BLANK
6	10814	YES	BEZEL
7	91023		O-RING, #2- 019, EPDM, 65-75 DURO, NSF 61
8	92000		SCREW 8 - 32 X 1/8 SS
9	10192		HEX KEY TOOL, #8 5/64



Cross handle Trim  
3-230B

REV D EN-4989 05/08/25

**NEWPORT BRASS.**

t: 949.417.5207 | [www.newportbrass.com](http://www.newportbrass.com)