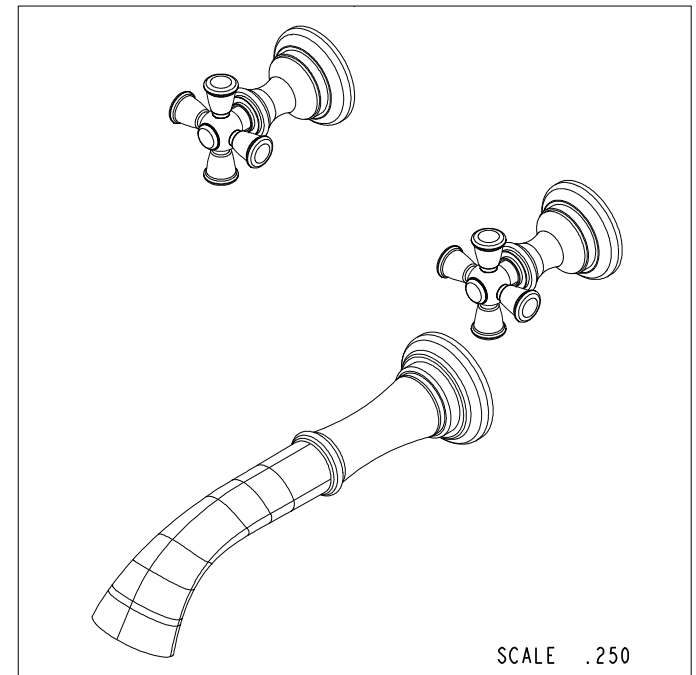
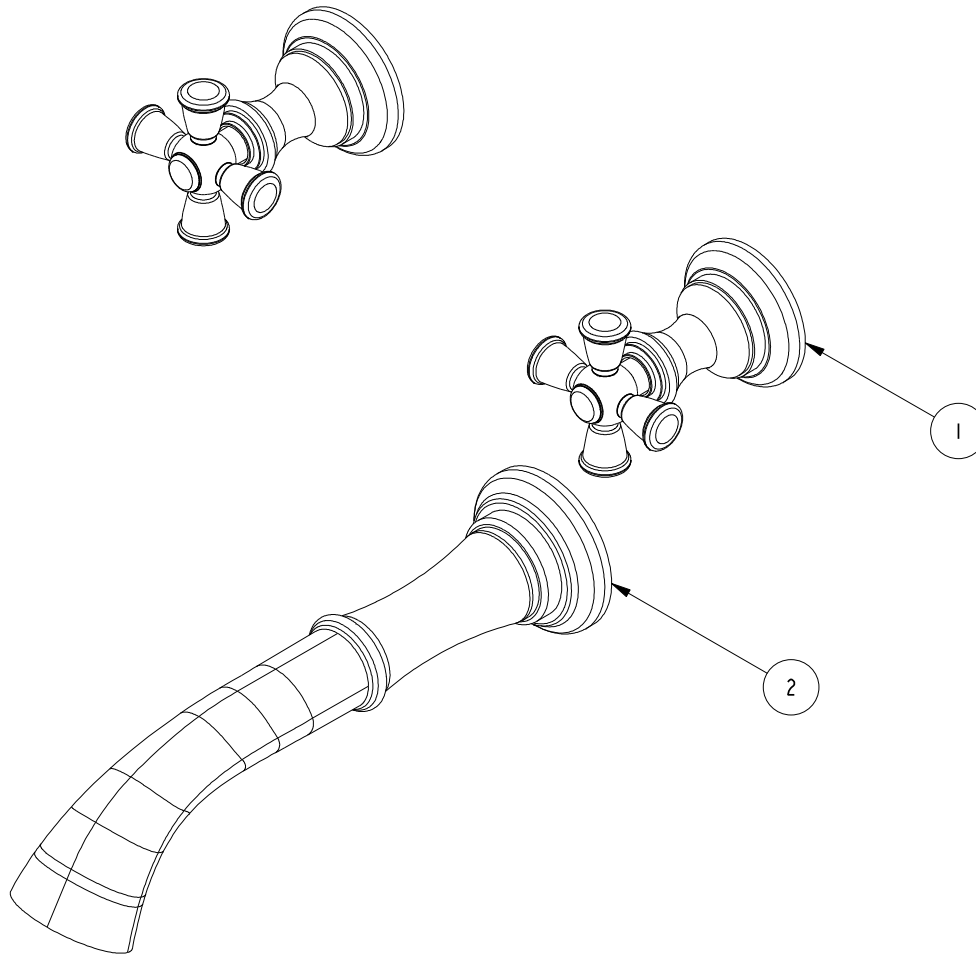


## NOTES:

1. TO INSPECT ASSEMBLY, FOLLOW FIRST ARTICLE AND IN PROCESS INSPECTION SHEET.

## BILL OF MATERIAL (CURRENT LEVEL)

ITEM	PT/ASSY	DESCRIPTION	TYPE	QTY.
1	3-378	CROSS HANDLE ASM	ASSEMBLY	2
2	3-669	SPOUT ASM W/ ESCUTCHEON TUB	ASSEMBLY	1



SCALE .250

		-	-
TESTING	-	-	-
ASSEMBLY	-	-	-
PLATING	-	-	-
POLISHING	-	NEXT ASSY	USED ON
MACHINING	-	APPLICATION	
TOOLING FIXTURE #		REMOVE ALL BURRS AND SHARP EDGES	

UNITS ARE: INCHES (MM)  
TOLERANCES ARE:  
FRACTIONS DECIMALS ANGLES  
 $\pm 1/16"$  .X  $\pm .1$  (2.5)  
.XX  $\pm .06$  (1.5)  
°  $\pm 1^\circ$

(X.XXX) DENOTES CRITICAL DIMS.  
ALL THREADS ARE CRITICAL

DRAWN JINSON 05/28/20  
CHECKED R.S. 05/28/20  
APPROVED R.S. 05/28/20

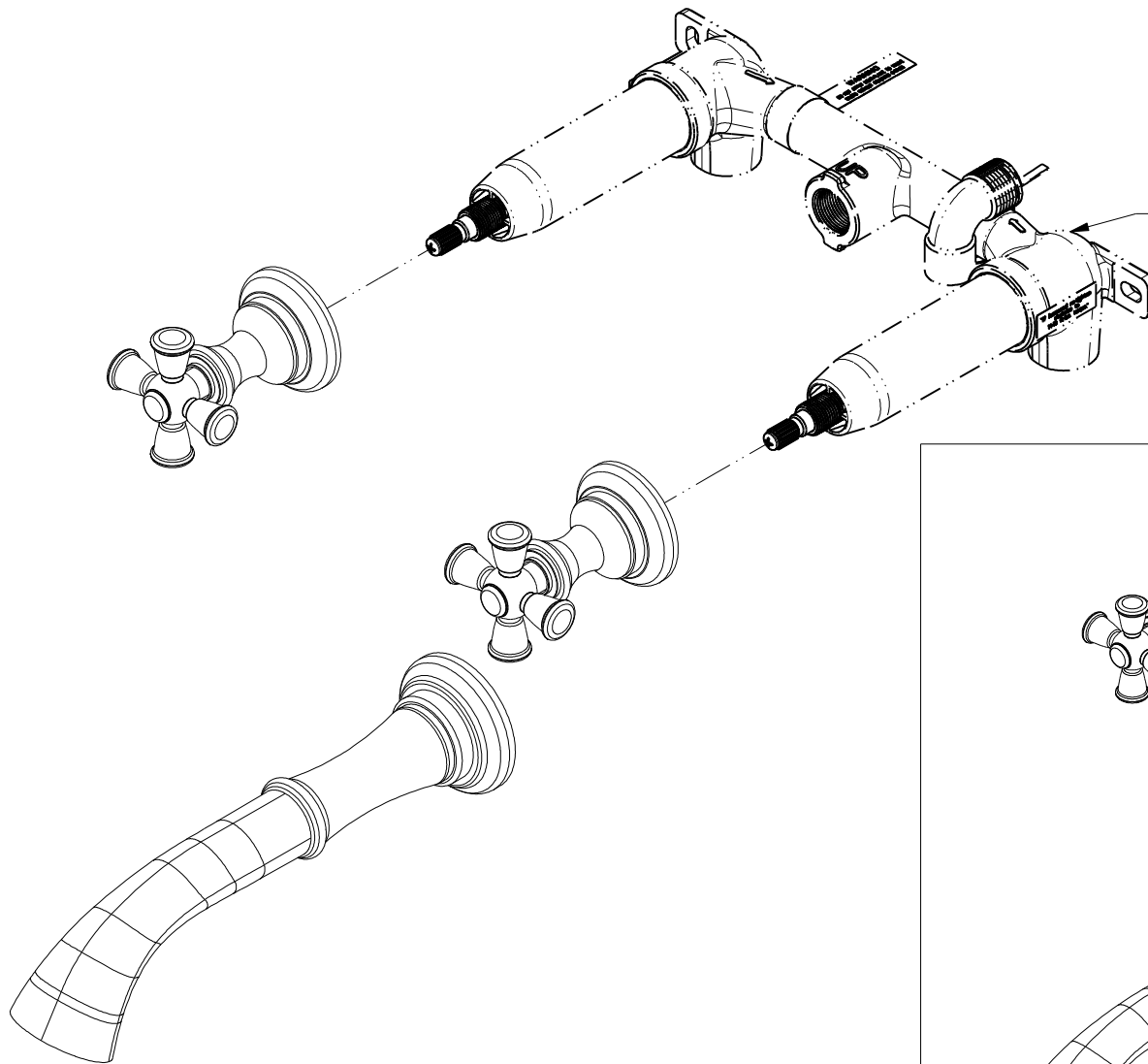
**BRASSTECH**  
INCORPORATED

2001 CARNEGIE AVE.  
SANTA ANA, CA 92705  
(949) 417-5207

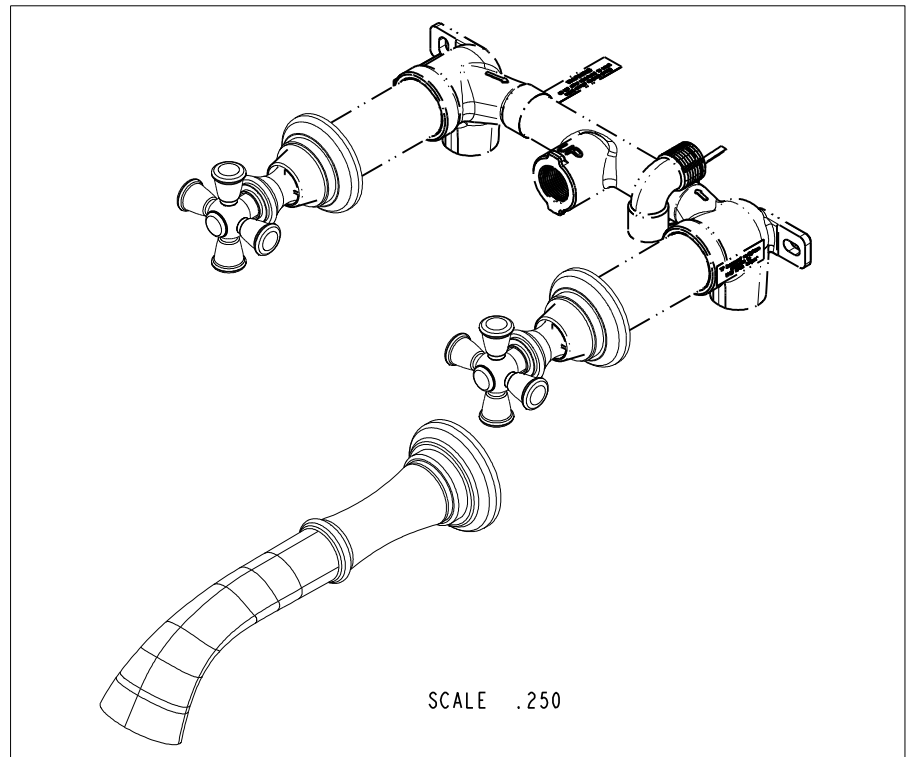
## WALL MOUNTED TUB TRIM KIT

DWG NO. 3-2445  
SCALE .375  
REF. -  
SHEET 1 OF 3  
REV C

COPYRIGHT 2005 BRASSTECH, INC.  
THESE DRAWINGS AND THE DESIGNS  
DEPICTED HEREIN ARE THE PROPRIETARY  
PROPERTY OF BRASSTECH. ANY USE  
OR REPRODUCTION IS SUBJECT TO  
THE EXPRESS APPROVAL OF BRASSTECH.  
UNAUTHORIZED USE IS STRICTLY  
PROHIBITED. ALL RIGHTS RESERVED.



PN: 1-500U  
SOLD SEPARATELY



SCALE .250

**BRASSTECH**

INCORPORATED

2001 CARNEGIE AVE.  
SANTA ANA, CA 92705  
(949) 417-5207

DWG NO.

3-2445

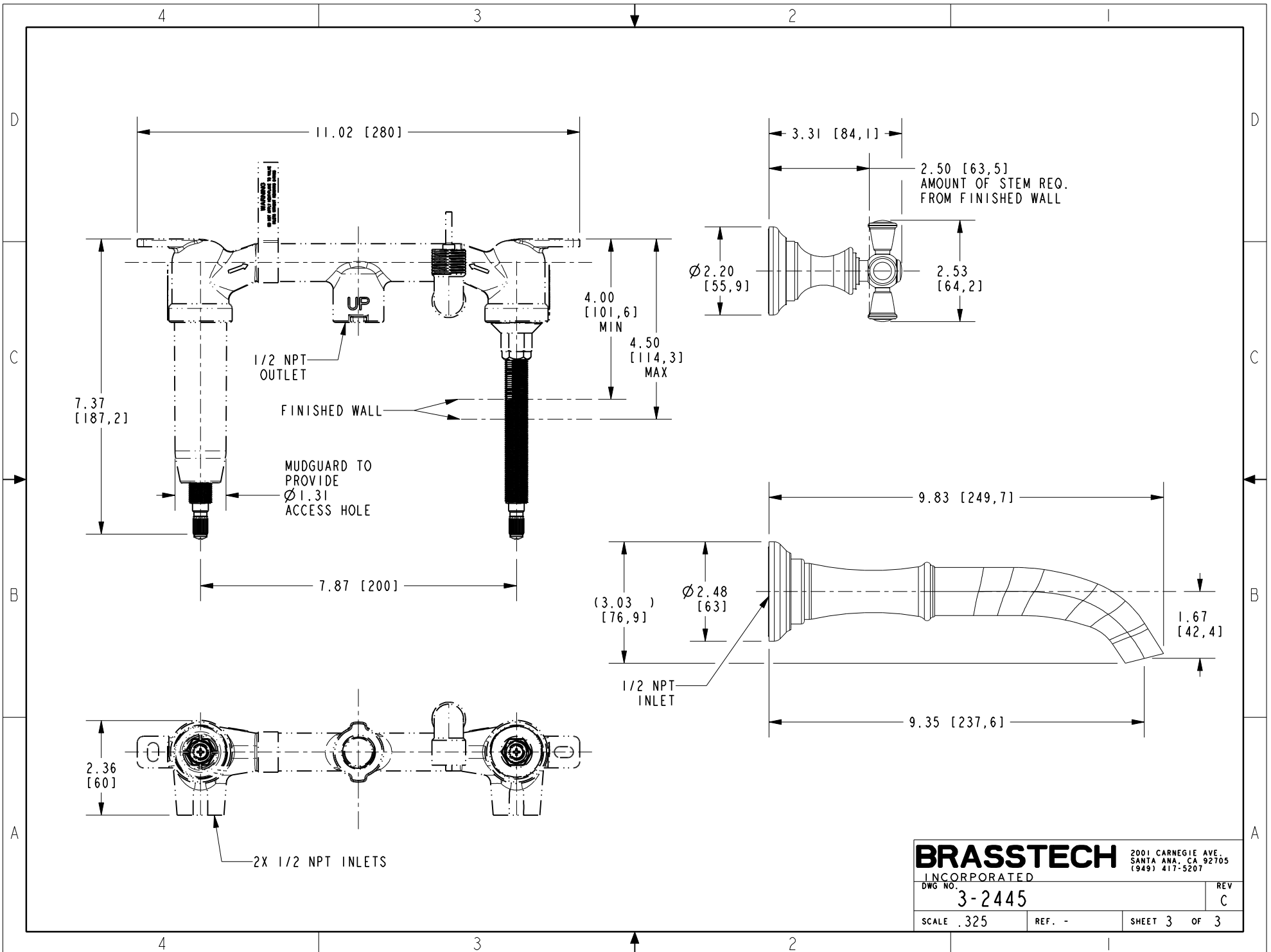
REV

C

SCALE .325

REF. -

SHEET 2 OF 3



<b>BRASSTECH</b>		2001 CARNEGIE AVE. SANTA ANA, CA 92705 (949) 417-5207	
INCORPORATED		REV	
DWG NO. 3-2445		C	
SCALE .325	REF. -	SHEET 3	OF 3