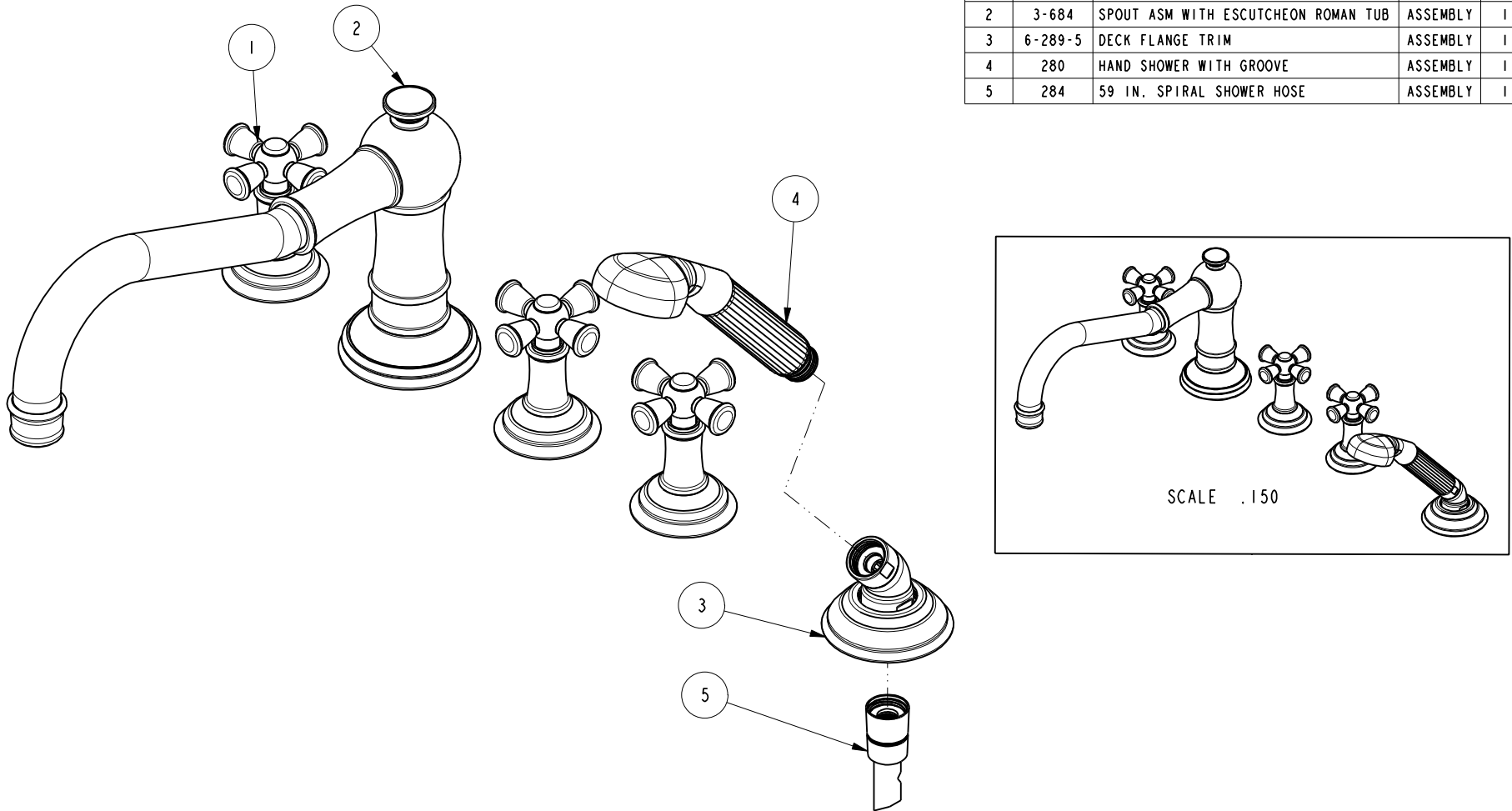


NOTES:

1. TO INSPECT ASSEMBLY, FOLLOW FIRST ARTICLE AND IN PROCESS INSPECTION SHEET.

BILL OF MATERIAL (CURRENT LEVEL)

| ITEM | PT/ASSY | DESCRIPTION | TYPE | QTY. |
|------|---------|-------------------------------------|----------|------|
| 1 | 3-374 | CROSS HANDLE AND ESC. ASM | ASSEMBLY | 3 |
| 2 | 3-684 | SPOUT ASM WITH ESCUTCHEON ROMAN TUB | ASSEMBLY | 1 |
| 3 | 6-289-5 | DECK FLANGE TRIM | ASSEMBLY | 1 |
| 4 | 280 | HAND SHOWER WITH GROOVE | ASSEMBLY | 1 |
| 5 | 284 | 59 IN. SPIRAL SHOWER HOSE | ASSEMBLY | 1 |



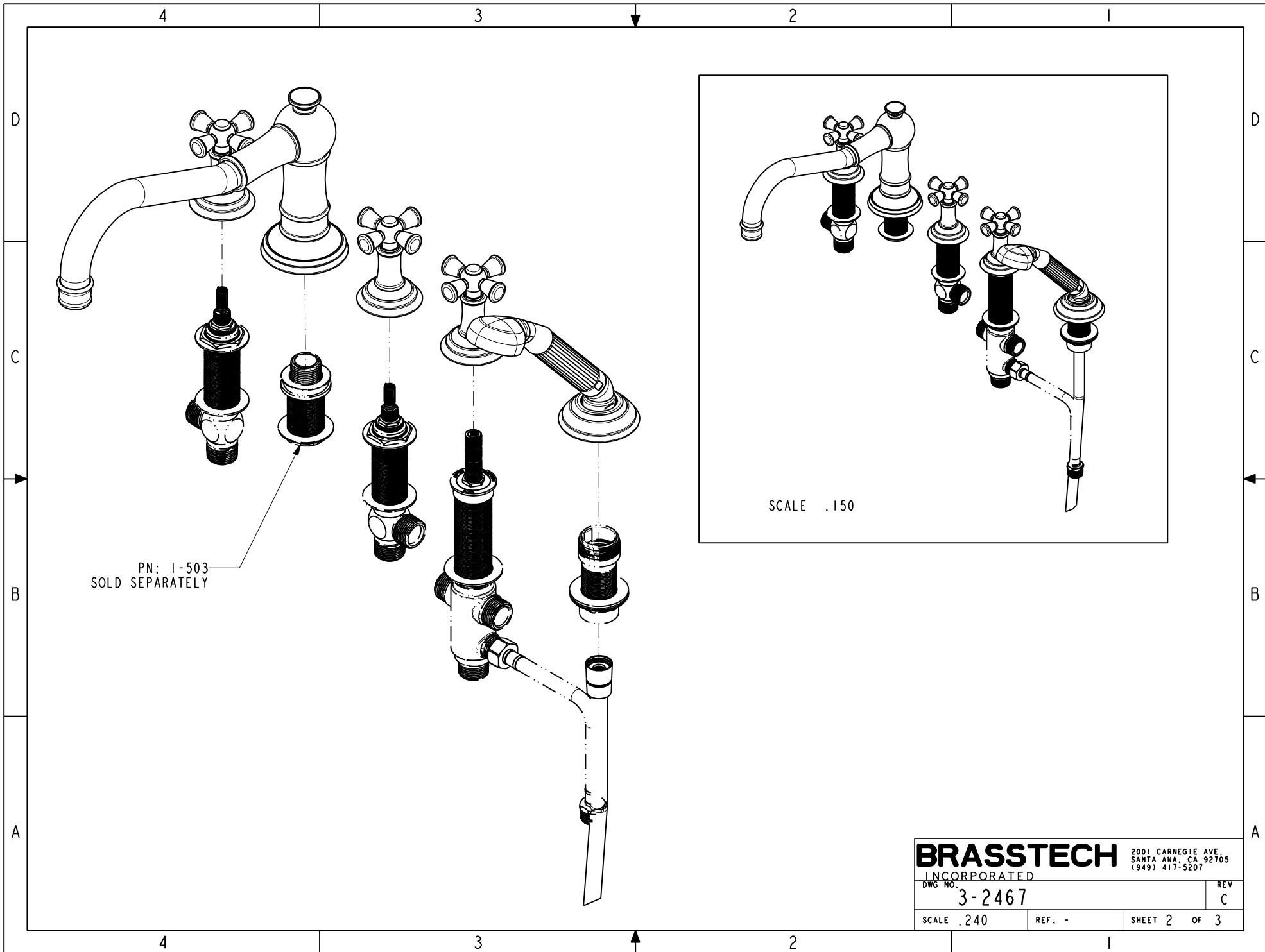
| ZONE | REV | DESCRIPTION | DATE | APPROVED |
|------|-----|-------------|----------|----------|
| - | C | EN-4300u | 02/02/21 | R.S. |
| - | B | EN-3938 | 08/19/19 | J.M. |
| - | A | EN-2032 | 01/07/14 | - |

COPYRIGHT 2005 BRASSTECH, INC. THESE DRAWINGS AND THE DESIGNS DEPICTED HEREIN ARE THE PROPRIETARY PROPERTY OF BRASSTECH. ANY USE OR REPRODUCTION IS SUBJECT TO THE EXPRESS APPROVAL OF BRASSTECH. UNAUTHORIZED USE IS STRICTLY PROHIBITED. ALL RIGHTS RESERVED.

| TESTING | ASSEMBLY | PLATING | POLISHING | MACHINING | TOOLING FIXTURE # |
|----------------------------------|----------|---------|-----------|-----------|-------------------|
| - | - | - | - | - | - |
| - | - | - | - | - | - |
| - | - | - | NEXT ASSY | USED ON | - |
| - | - | - | - | - | - |
| APPLICATION | | | | | |
| REMOVE ALL BURRS AND SHARP EDGES | | | | | |

UNITS ARE: INCHES [MM]
 TOLERANCES ARE:
 FRACTIONS DECIMALS ANGLES
 $\pm 1/16"$.X $\pm .1$ [2,5] $\pm 1^\circ$
 .XX $\pm .06$ [1,5]
 (X.XXX) DENOTES CRITICAL DIMS.
 ALL THREADS ARE CRITICAL
 DRAWN JINSON 02/02/21
 CHECKED R.S. 02/02/21
 APPROVED R.S. 02/02/21

BRASSTECH 2001 CARNEGIE AVE. SANTA ANA, CA 92705 (949) 417-5207
 INCORPORATED
R/T DECK TRIM WITH HANDSHOWER
 DWG NO. **3-2467** REV C
 SCALE .300 REF. - SHEET 1 OF 3



| | | | |
|------------------|--------|---|--|
| BRASSTECH | | 2001 CARNEGIE AVE. SANTA ANA, CA 92705 (949) 417-5207 | |
| INCORPORATED | | | |
| DWG NO. 3-2467 | | REV C | |
| SCALE .240 | REF. - | SHEET 2 OF 3 | |

