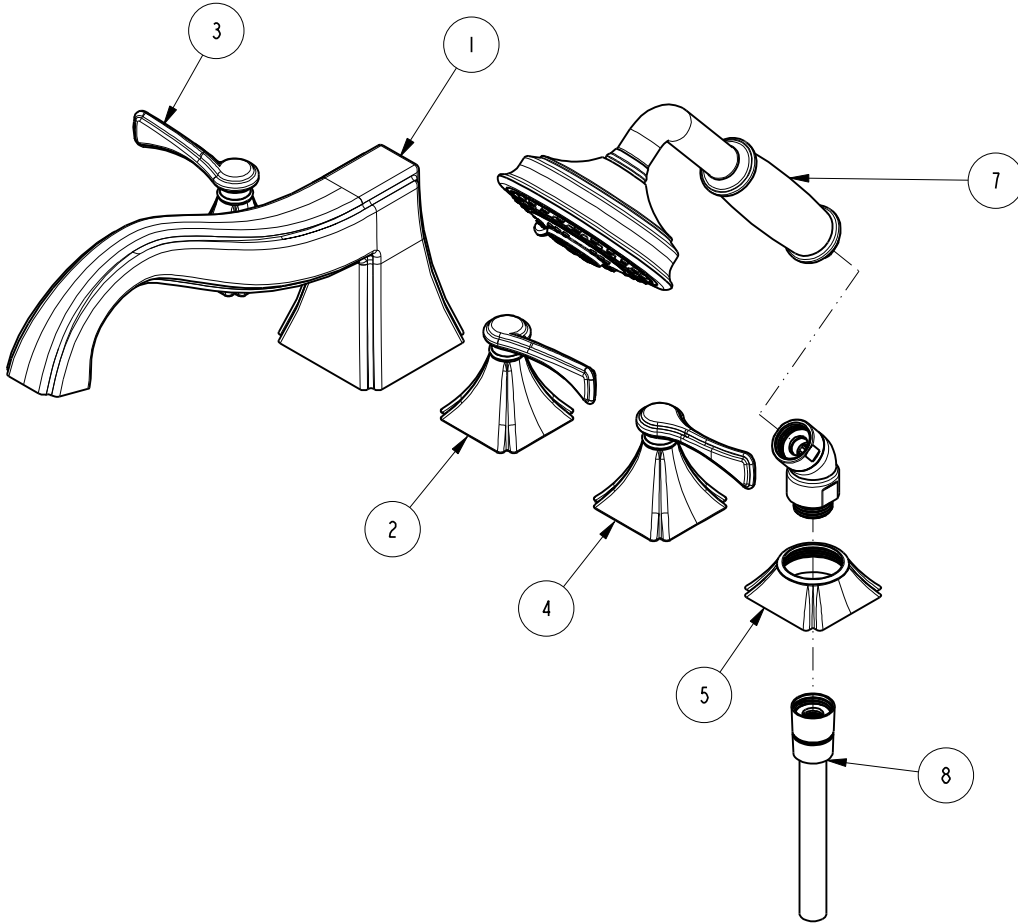


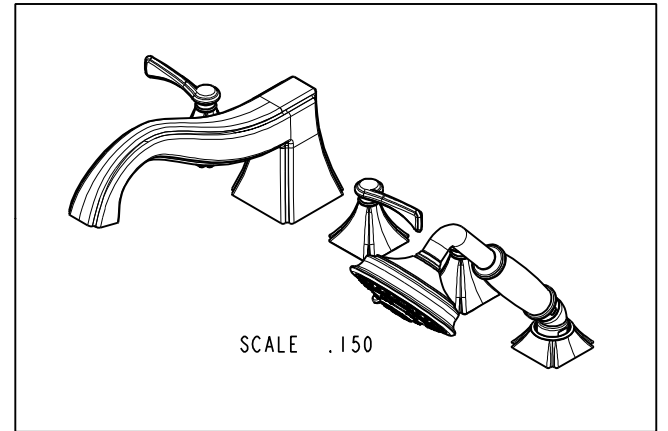
NOTES:

1. TO INSPECT ASSEMBLY, FOLLOW FIRST ARTICLE AND IN PROCESS INSPECTION SHEET.



**BILL OF MATERIAL (CURRENT LEVEL)**

ITEM	PT/ASSY	DESCRIPTION	TYPE	QTY.
1	3-563	R/T SPOUT ASM	ASSEMBLY	1
2	3-604	LEVER HANDLE ASM - COLD	ASSEMBLY	1
3	3-605	LEVER HANDLE ASM - HOT	ASSEMBLY	1
4	3-606	LEVER HANDLE ASM - STRAIGHT	ASSEMBLY	1
5	6-289-8	HAND SHOWER DECKFLANGE ASSEMBLY	ASSEMBLY	1
6	2-846	HAND SHOWER ELBOW ASM	ASSEMBLY	1
7	281-1	HAND SHOWER - TRADITIONAL	ASSEMBLY	1
8	284	59 IN. SPIRAL SHOWER HOSE	ASSEMBLY	1



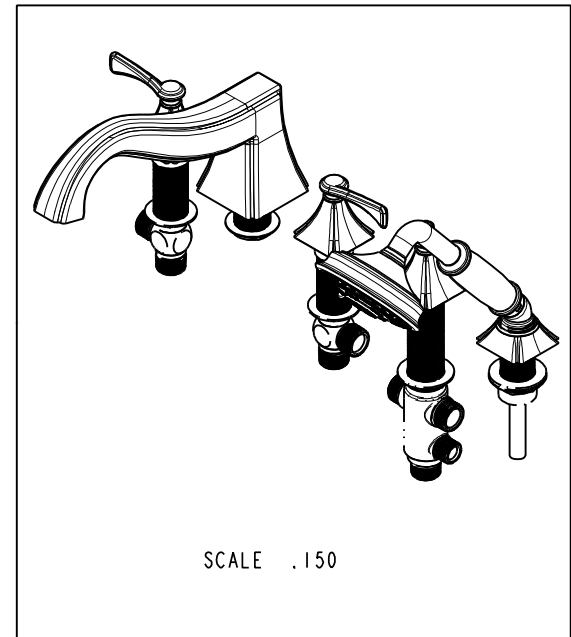
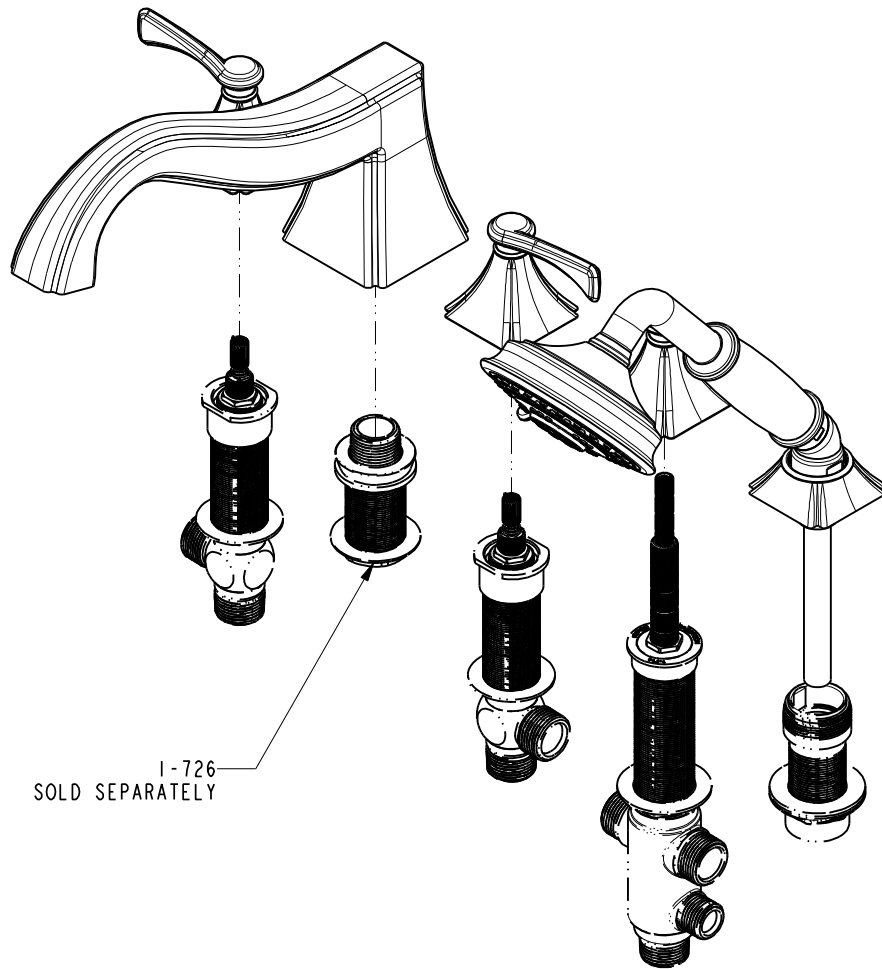
ZONE	REV	DESCRIPTION	DATE	APPROVED
-	D	EN-4300u	02/02/21	R.S.
-	C	EN-4242	08/28/20	J.M.
-	B	EN-3435	01/23/18	J.A.
-	A	EN-3397	09/05/17	J.A.
-	-	EN-2772a	02/03/15	J.M.

COPYRIGHT 2005 BRASSTECH, INC. THESE DRAWINGS AND THE DESIGNS DEPICTED HEREIN ARE THE PROPRIETARY PROPERTY OF BRASSTECH. ANY USE OR REPRODUCTION IS SUBJECT TO THE EXPRESS APPROVAL OF BRASSTECH. UNAUTHORIZED USE IS STRICTLY PROHIBITED. ALL RIGHTS RESERVED.

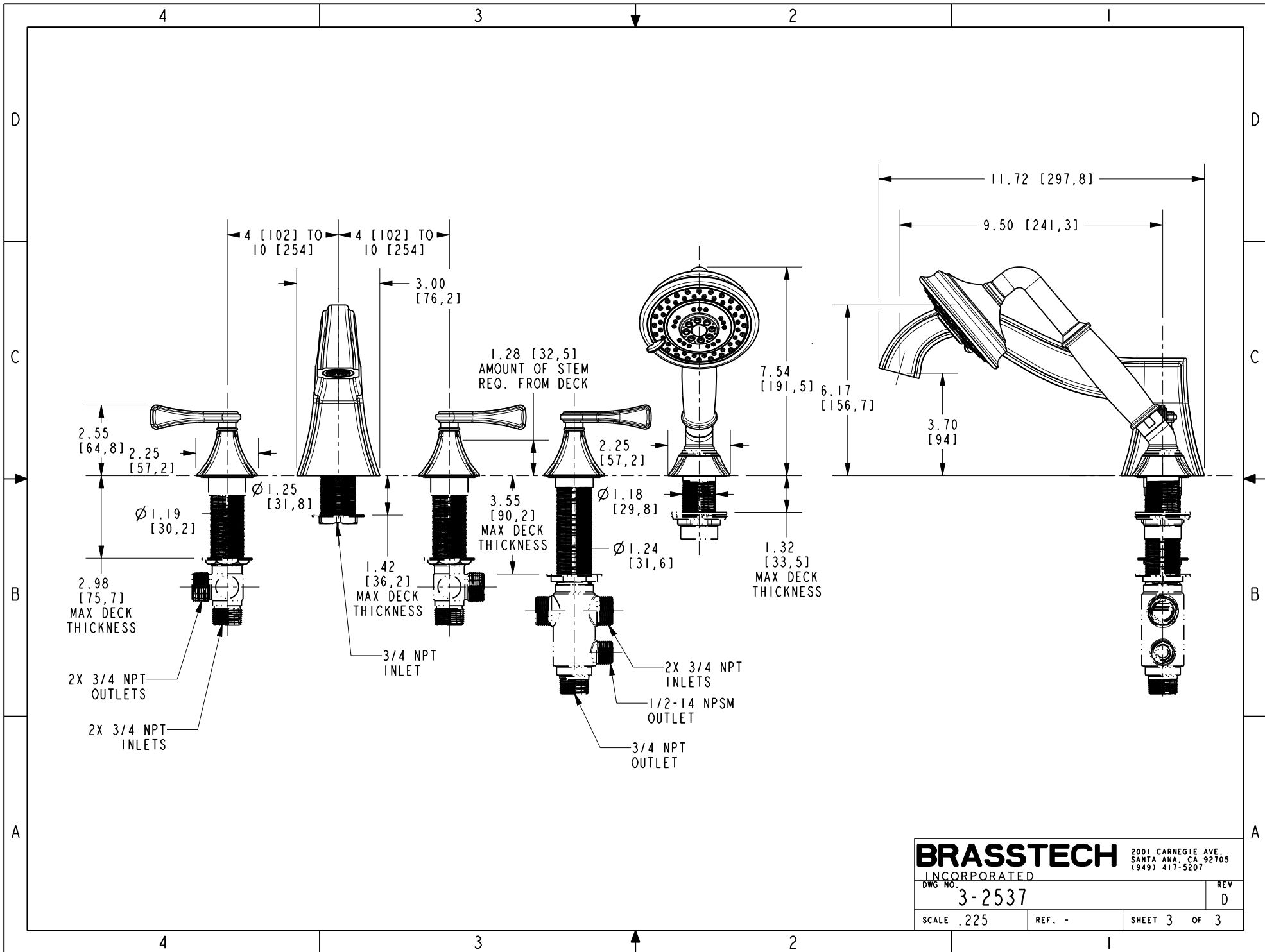
TESTING	-	-	-
ASSEMBLY	-	-	-
PLATING	-	-	-
POLISHING	-	NEXT ASSY	USED ON
MACHINING	-	APPLICATION	
TOOLING FIXTURE #	REMOVE ALL BURRS AND SHARP EDGES		

UNITS ARE: INCHES [MM]		
TOLERANCES ARE:		
FRACTIONS DECIMALS	ANGLES	
±1/16"	±1°	
.x ±.1	[2,5]	
.xx ±.06	[1,5]	
(X.XXX) DENOTES CRITICAL DIMS.		
ALL THREADS ARE CRITICAL		
DRAWN	JINSON	02/02/21
CHECKED	R.S.	02/02/21
APPROVED	R.S.	02/02/21

<b>BRASSTECH</b>		2001 CARNEGIE AVE. SANTA ANA, CA 92705 (949) 417-5207	
INCORPORATED			
R/T & H/SHOWER WITH LEVER HANDLES			
DWG NO.		REV	
3-2537		D	
SCALE	REF.	SHEET	OF
.250	-	1	3



<b>BRASSTECH</b>		2001 CARNEGIE AVE. SANTA ANA, CA 92705 (949) 417-5207	
INCORPORATED			
DWG NO. 3-2537		REV D	
SCALE .250	REF. -	SHEET 2 OF 3	



**BRASSTECH** INCORPORATED  
 2001 CARNEGIE AVE.  
 SANTA ANA, CA 92705  
 (949) 417-5207

DWG NO. 3-2537	REV D
SCALE .225	REF. -
SHEET 3 OF 3	