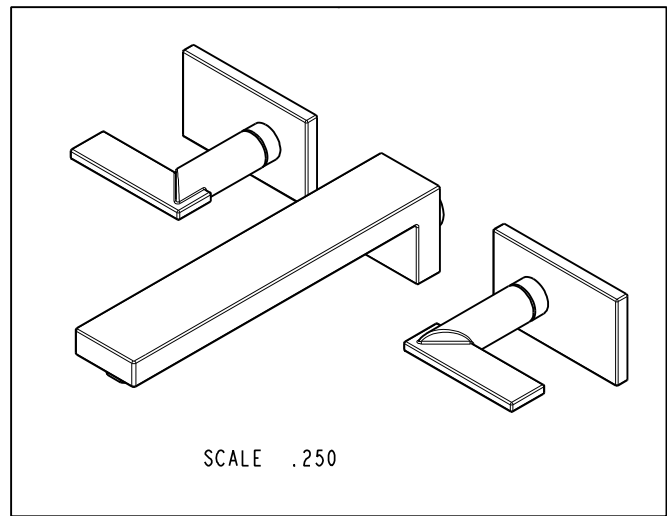


NOTES:

(N1) 1. FIT / FORM / FUNCTION SHALL FOLLOW PS-E.008.

BILL OF MATERIAL (CURRENT LEVEL)

ITEM	PT/ASSY	DESCRIPTION	TYPE	QTY.
1	8-028	WALL LAVATORY SPOUT ASM	ASSEMBLY	1
2	3-609	LEVER HANDLE ASM	ASSEMBLY	2



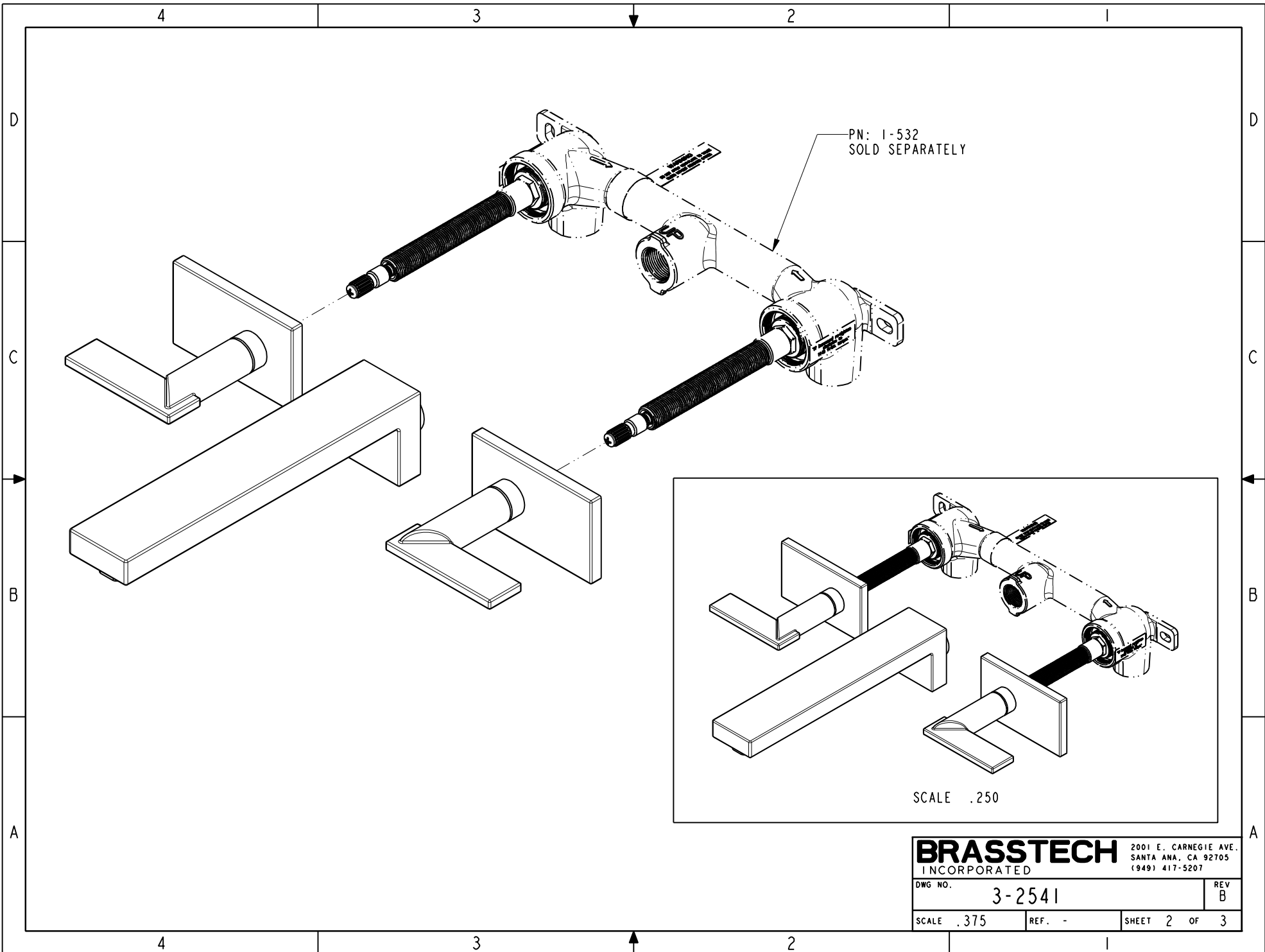
ZONE	REV	DESCRIPTION	DATE	APPROVED
-	B	EN-3334	01/04/18	J.A.
-	A	EN-3062	06/01/16	R.S
-	-	EN-1735	06/10/11	-

COPYRIGHT 2005 BRASSTECH, INC. THESE DRAWINGS AND THE DESIGNS DEPICTED HEREIN ARE THE PROPRIETARY PROPERTY OF BRASSTECH. ANY USE OR REPRODUCTION IS SUBJECT TO THE EXPRESS APPROVAL OF BRASSTECH. UNAUTHORIZED USE IS STRICTLY PROHIBITED. ALL RIGHTS RESERVED.

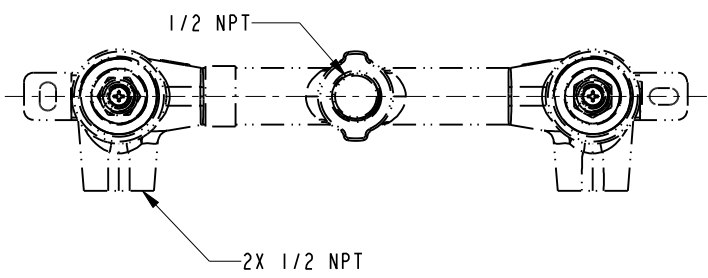
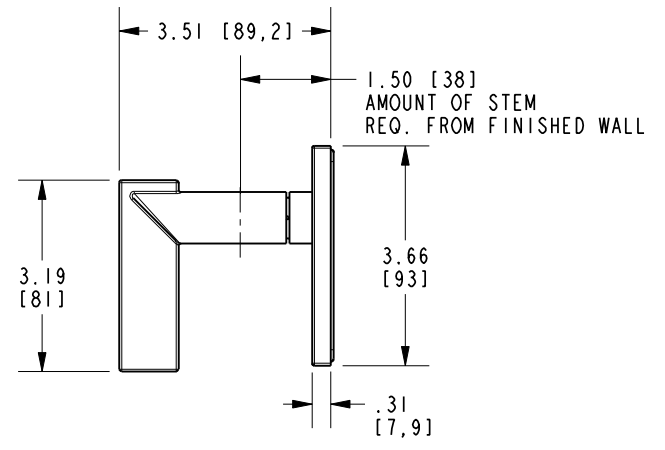
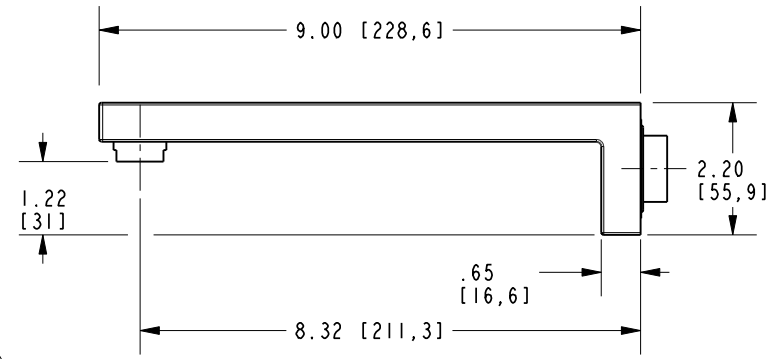
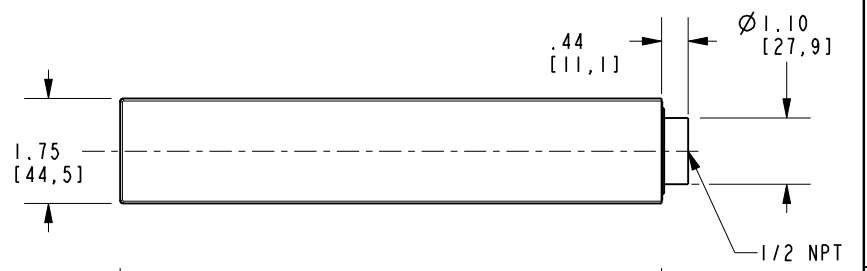
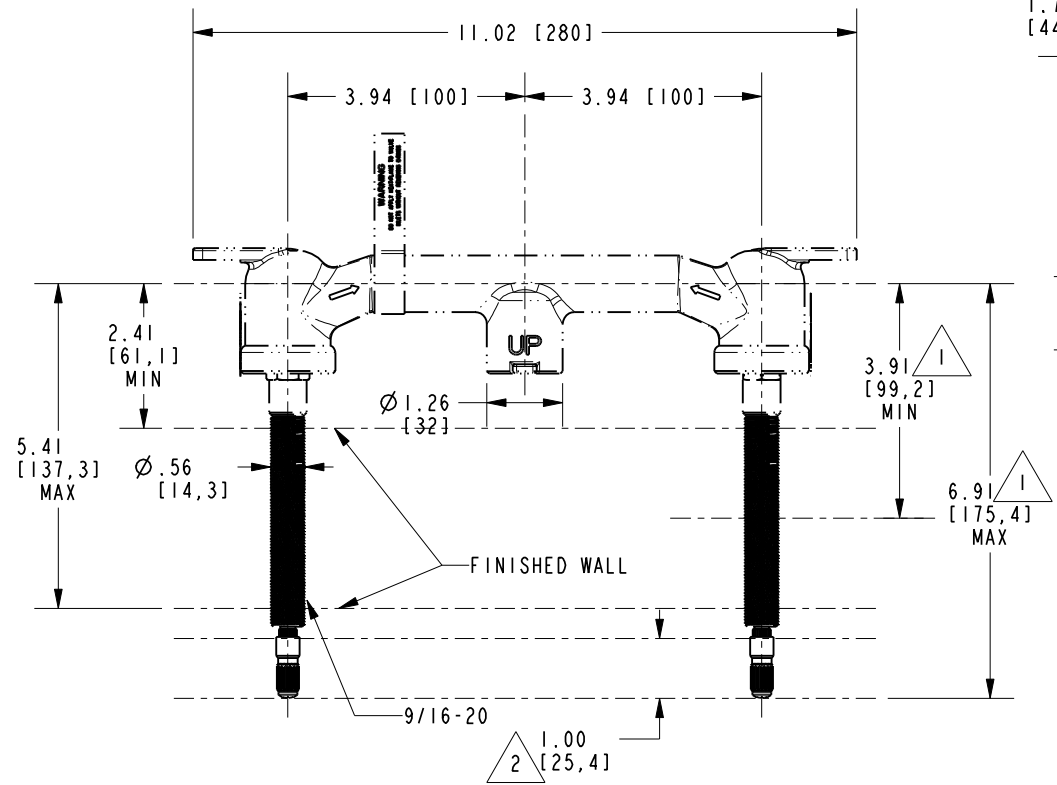
TESTING	ASSEMBLY	PLATING	POLISHING	MACHINING	TOOLING	FIXTURE #	APPLICATION
-	-	-	-	-	-	-	REMOVE ALL BURRS AND SHARP EDGES
-	-	-	-	-	-	-	USED ON

UNITS ARE: INCHES [MM]  
 TOLERANCES ARE:  
 FRACTIONS DECIMALS ANGLES  
 $\pm 1/16"$  .X  $\pm .1$  [2.5]  $\pm 1^\circ$   
 .XX  $\pm .06$  [1.5]  
 (X.XXX) DENOTES CRITICAL DIMS.  
 ALL THREADS ARE CRITICAL  
 DRAWN JINSON 01/04/18  
 CHECKED J.A. 01/04/18  
 APPROVED J.A. 01/04/18

**BRASSTECH** 2001 CARNEGIE AVE. SANTA ANA, CA 92705 (949) 417-5207  
 INCORPORATED  
 W/M LAVATORY FAUCET  
 DWG NO. 3-2541 REV B  
 SCALE .500 REF. - SHEET 1 OF 3



- NOTES:
- 1. CUT STEM TO DIMENSION SHOWN.
  - 2. CUT ALL-THREAD 1" SHORTER THAN STEM.



<b>BRASSTECH</b>		2001 E. CARNEGIE AVE. SANTA ANA, CA 92705 (949) 417-5207	
DWG NO.	3-2541	REV	B
SCALE	.313	REF.	-
SHEET 3		OF 3	