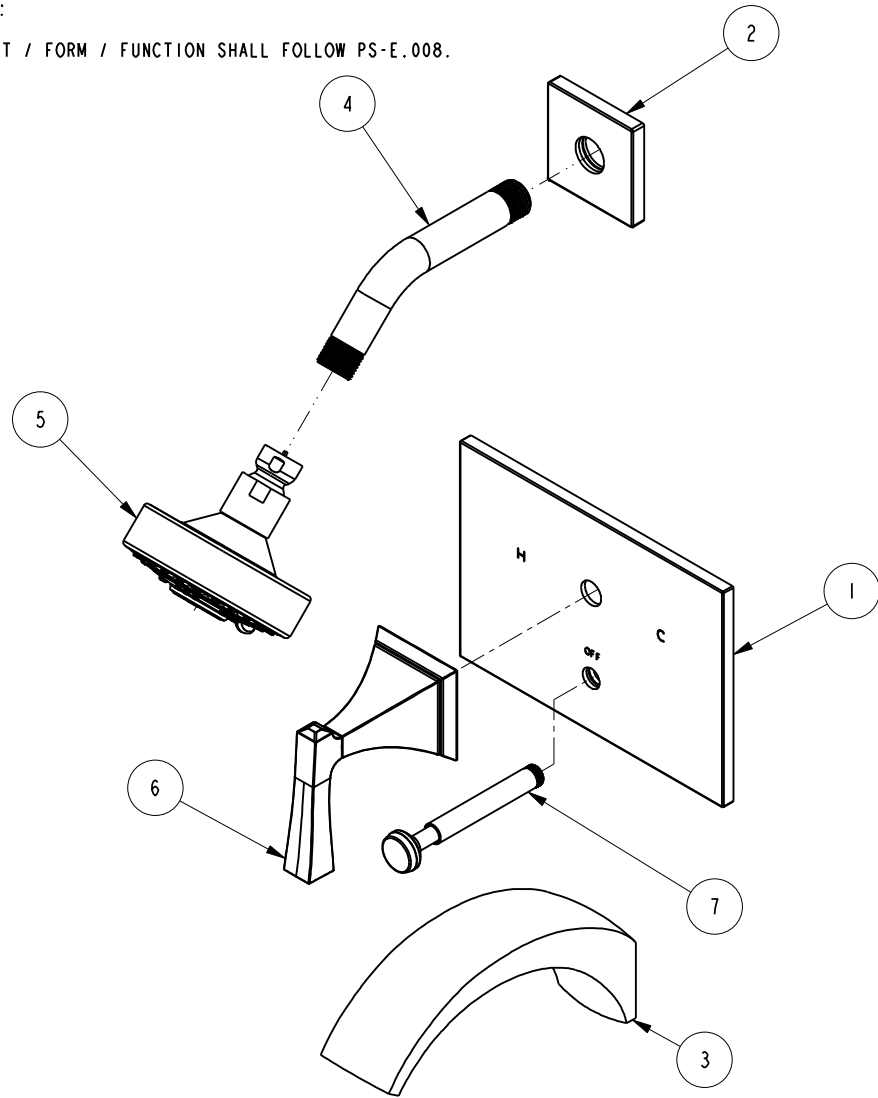


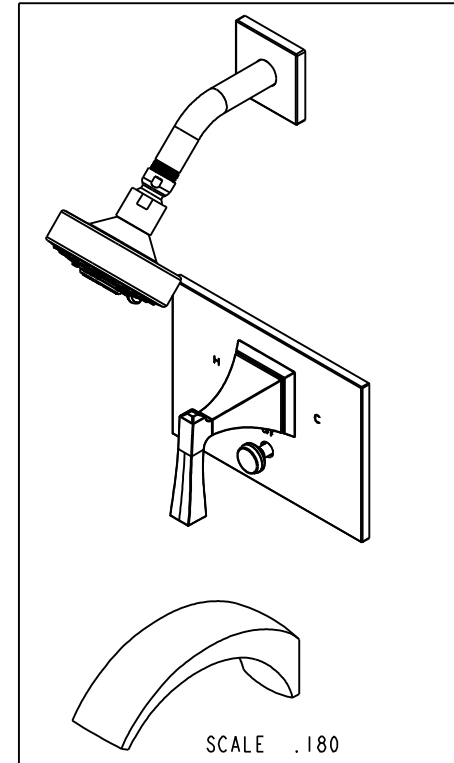
NOTES:

(N1) 1. FIT / FORM / FUNCTION SHALL FOLLOW PS-E.008.



BILL OF MATERIAL (CURRENT LEVEL)

ITEM	PT/ASSY	DESCRIPTION	TYPE	QTY.
1	8-032	TUB & SHOWER PLATE ASM	ASSEMBLY	1
2	2-640	FLANGE ASSEMBLY	ASSEMBLY	1
3	20-258	TUB WALL SPOUT ASM	ASSEMBLY	1
4	200	SHOWER ARM 6" BRASS	PART	1
5	2155	SHOWER HEAD, CONTEMP	ASSEMBLY	1
6	3-594	LEVER HANDLE W/ESC.	ASSEMBLY	1
7	2-217	DIVERTER TRIM KIT	ASSEMBLY	1



TESTING	-	-	-
ASSEMBLY	-	-	-
PLATING	-	-	-
POLISHING	-	NEXT ASSY	USED ON
MACHINING	-	APPLICATION	
TOOLING FIXTURE #	REMOVE ALL BURRS AND SHARP EDGES		

UNITS ARE: INCHES [MM]
 TOLERANCES ARE:
 FRACTIONS DECIMALS ANGLES
 ±1/16" .X ±.1 [2.5] ±1°
 .XX ±.06 [1.5]
 (X.XXX) DENOTES CRITICAL DIMS.
 ALL THREADS ARE CRITICAL

BRASSTECH 2001 CARNEGIE AVE.
 INCORPORATED SANTA ANA, CA 92705
 (949) 417-5207

TRIM KIT TUB / SHOWER BP

ZONE	REV	DESCRIPTION	DATE	APPROVED
-	B	EN-3223	02/01/17	J.A
-	A	EN-3185	11/11/16	R.S
-	-	EN-2367b	05/25/15	J.M

COPYRIGHT 2005 BRASSTECH, INC.
 THESE DRAWINGS AND THE DESIGNS
 DEPICTED HEREIN ARE THE PROPRIETARY
 PROPERTY OF BRASSTECH. ANY USE
 OR REPRODUCTION IS SUBJECT TO
 THE EXPRESS APPROVAL OF BRASSTECH.
 UNAUTHORIZED USE IS STRICTLY
 PROHIBITED. ALL RIGHTS RESERVED.

DRAWN	VINAY	11/11/16
CHECKED	RAVINDRA	11/11/16
APPROVED	R.S	11/11/16

DWG NO.	3-2572BP	REV	B
SCALE	.250	REF.	-
SHEET 1		OF 3	

4

3

2

D

D

C

C

B

B

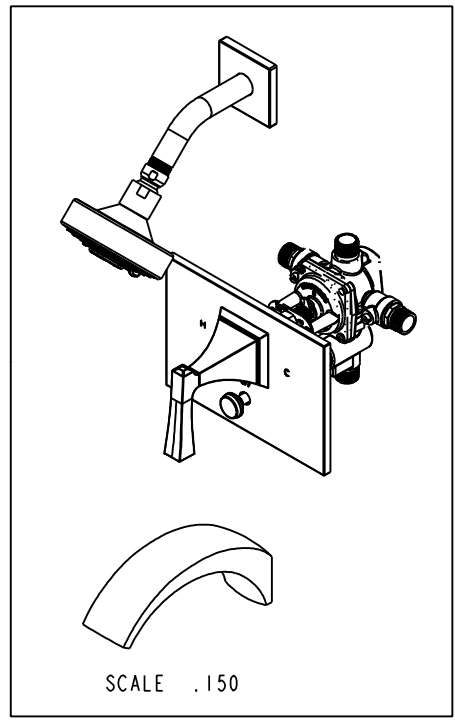
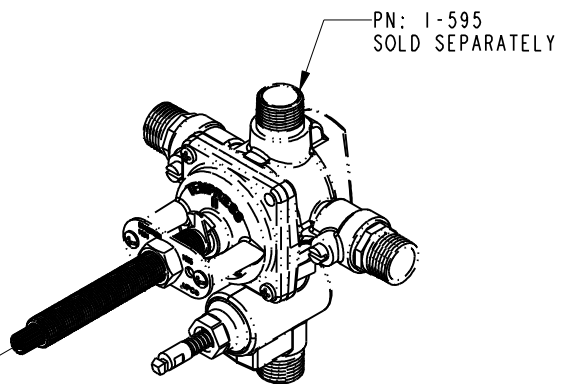
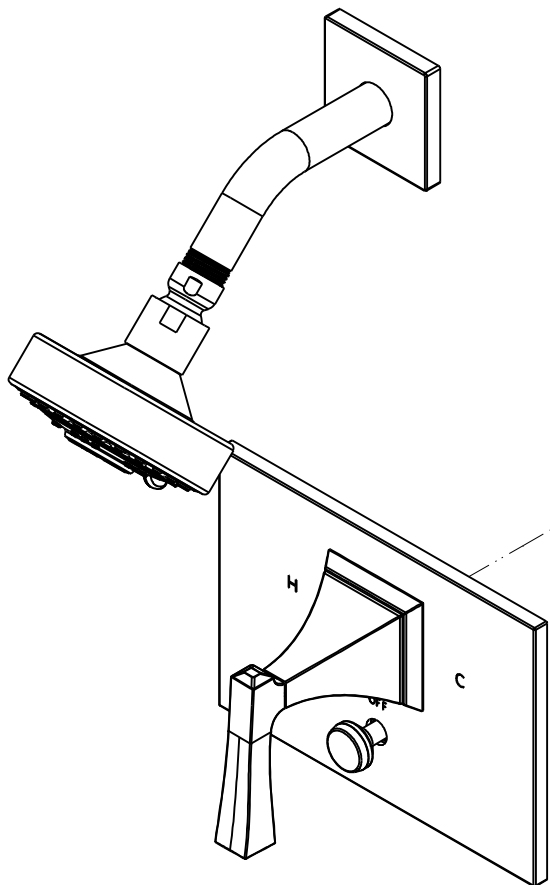
A

A

4

3

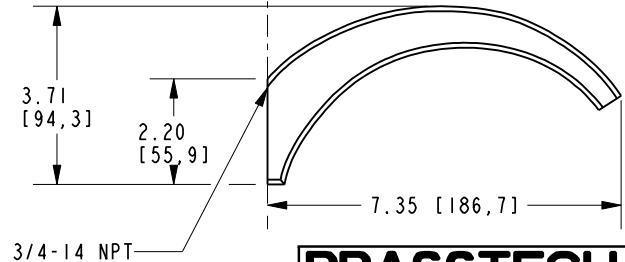
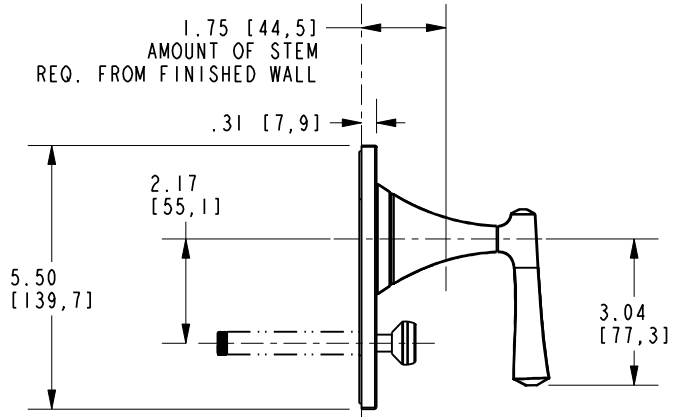
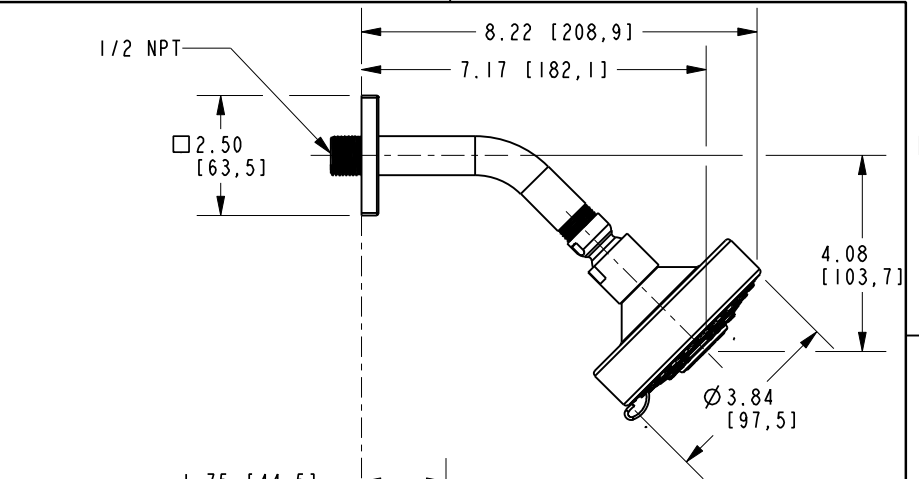
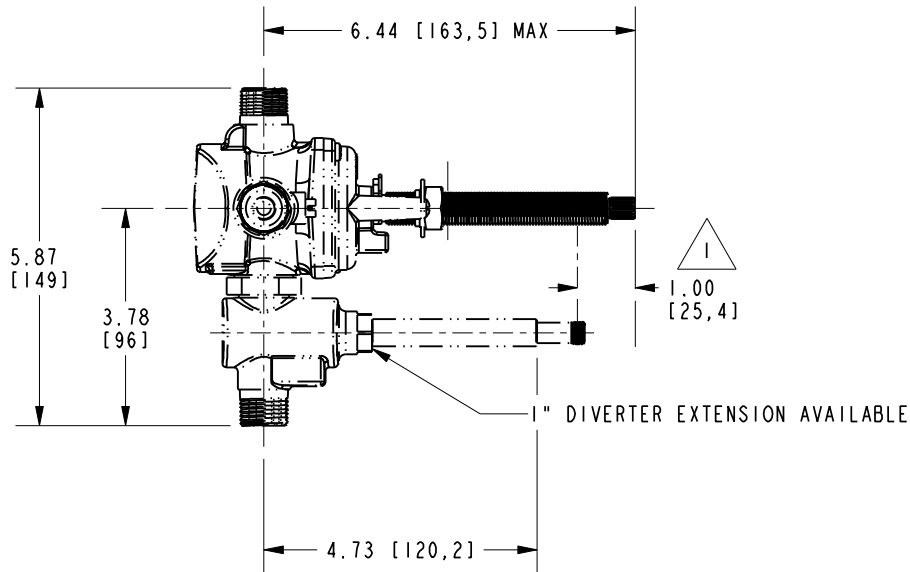
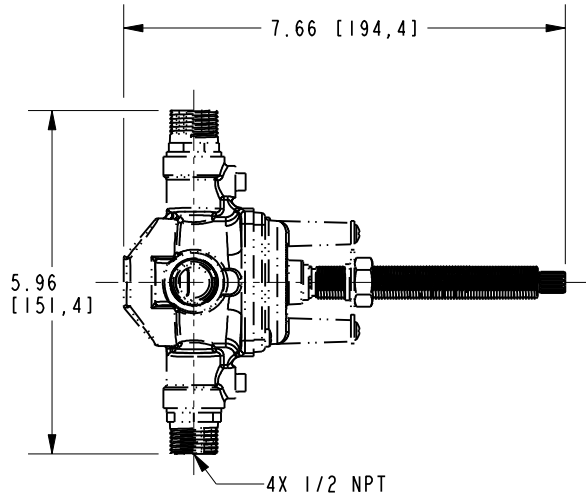
2



BRASSTECH		2001 E. CARNEGIE AVE.	
INCORPORATED		SANTA ANA, CA 92705	
		(949) 417-5207	
DWG NO.	3-2572BP	REV	B
SCALE .300	REF. -	SHEET 2	OF 3

NOTES:

1. CUT ALL-THREAD 1" SHORTER THAN STEM.



3/4-14 NPT

BRASSTECH		2001 E. CARNEGIE AVE. SANTA ANA, CA 92705 (949) 417-5207	
DWG NO.	3-2572BP		REV B
SCALE .250	REF. -	SHEET 3 OF 3	