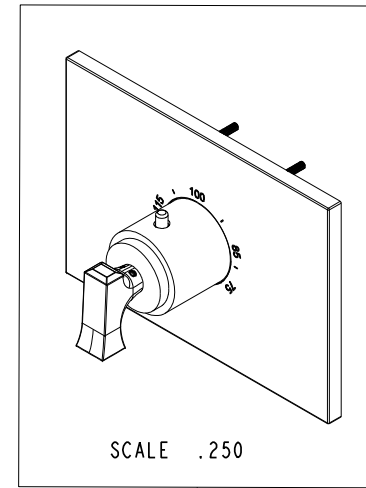
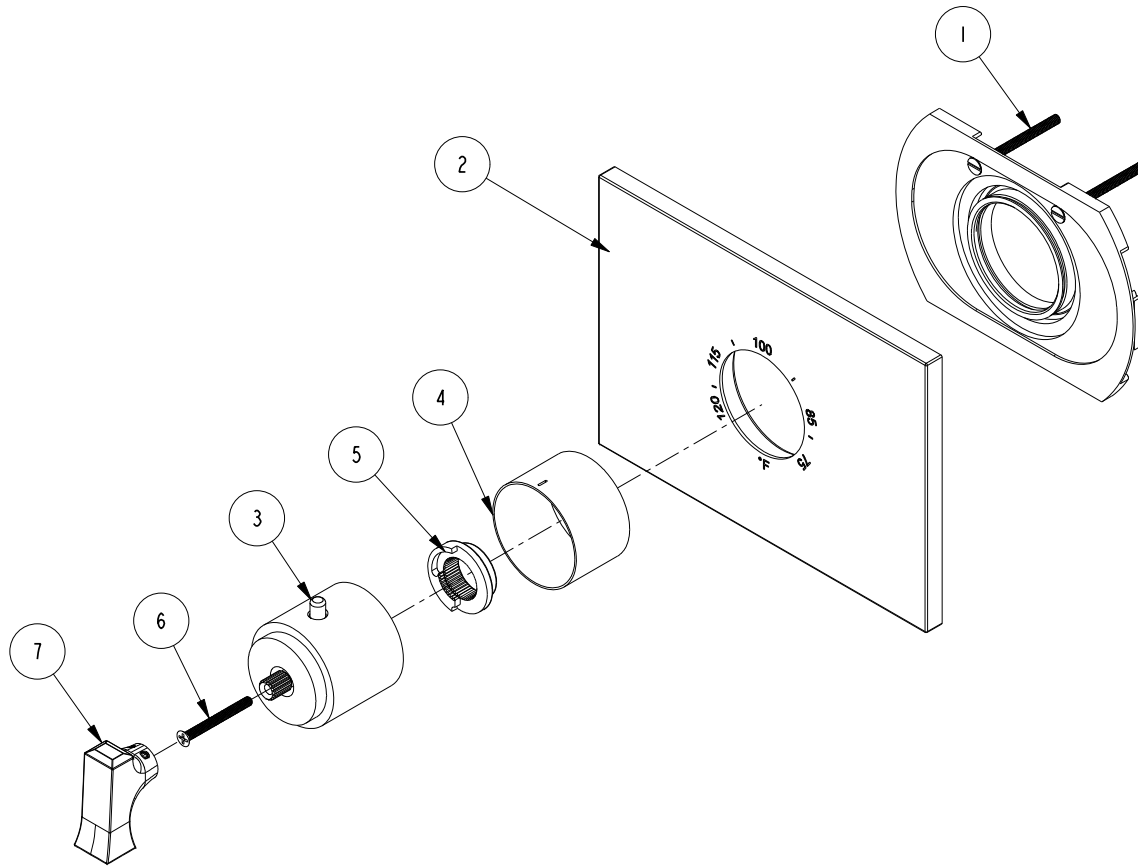


NOTES:

(NI) 1. FIT / FORM / FUNCTION SHALL FOLLOW PS-E.008.

BILL OF MATERIAL (CURRENT LEVEL)

ITEM	PT/ASSY	DESCRIPTION	TYPE	QTY.
1	1-331	THERMO WALL PLATE ASM	ASSEMBLY	1
2	12118	THERMO TRIM PLATE	PART	1
3	20-150	THERMO BONNET ASM	ASSEMBLY	1
4	11029	SLEEVE - THERMO	PART	1
5	91308	TEMP LIMIT STOP - THERMO	PART	1
6	92113	SCRW, M4 X .7 X 40 PHL FLT HD SS	PART	1
7	20-133	LEVER HANDLE ASM	ASSEMBLY	1



TESTING	-	-	-	UNITS ARE: INCHES [MM]
ASSEMBLY	-	-	-	TOLERANCES ARE:
PLATING	-	-	-	FRACTIONS DECIMALS ANGLES
POLISHING	-	-	-	±1/16" .X ±.1 [2.5] ±1°
MACHINING	-	NEXT ASSY	USED ON	.XX ±.06 [1.5]
TOOLING	FIXTURE #	APPLICATION		(X.XXX) DENOTES CRITICAL DIMS.
		REMOVE ALL BURRS AND SHARP EDGES		ALL THREADS ARE CRITICAL
				DRAWN R.S. 12/08/15
				CHECKED J.M. 12/08/15
				APPROVED J.M. 12/08/15

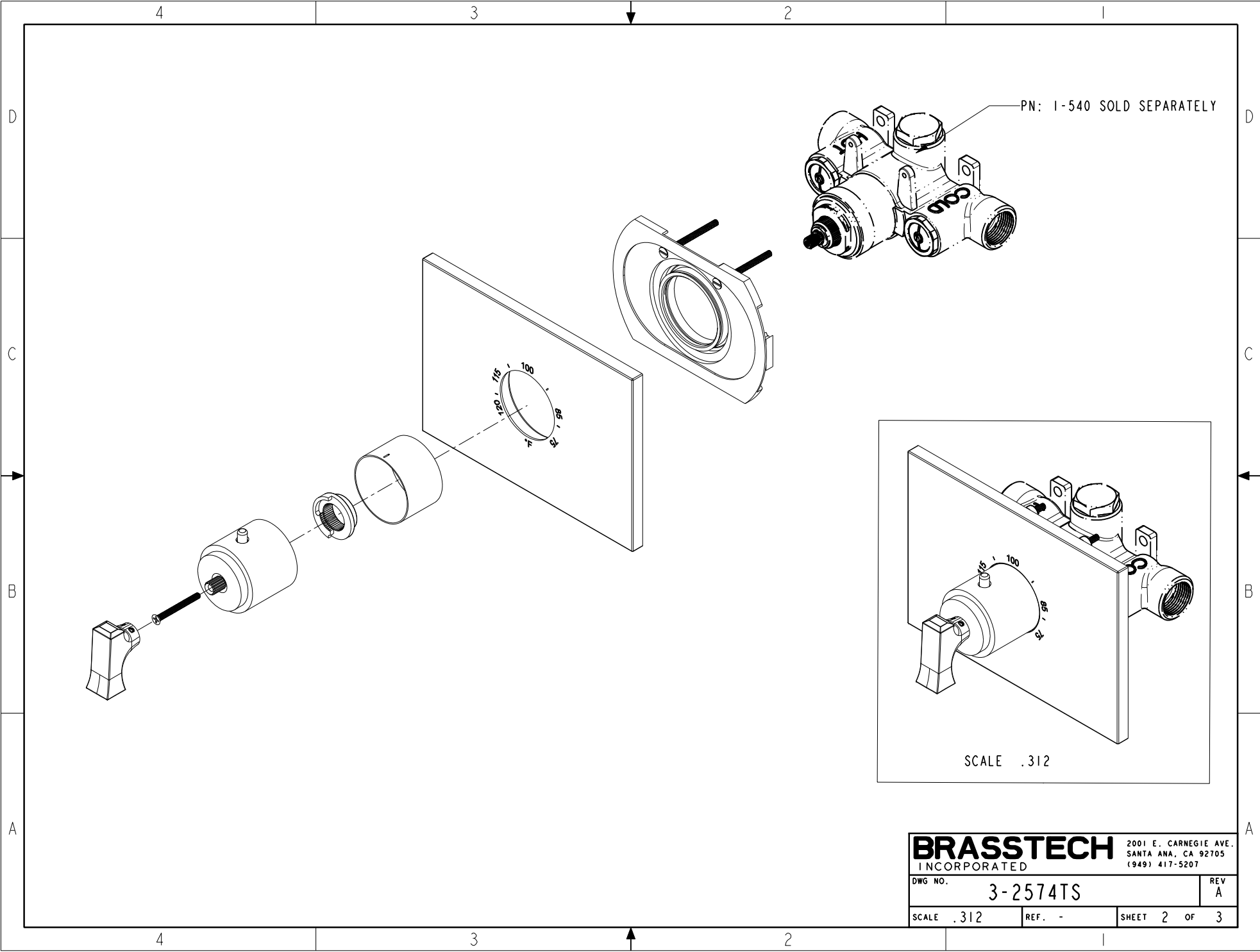
BRASSTECH 2001 CARNEGIE AVE.
INCORPORATED SANTA ANA, CA 92705
(949) 417-5207

3/4" THERMO TRIM

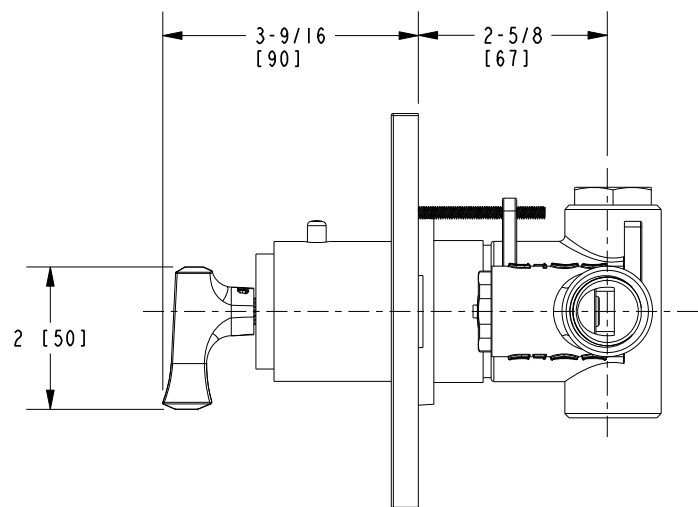
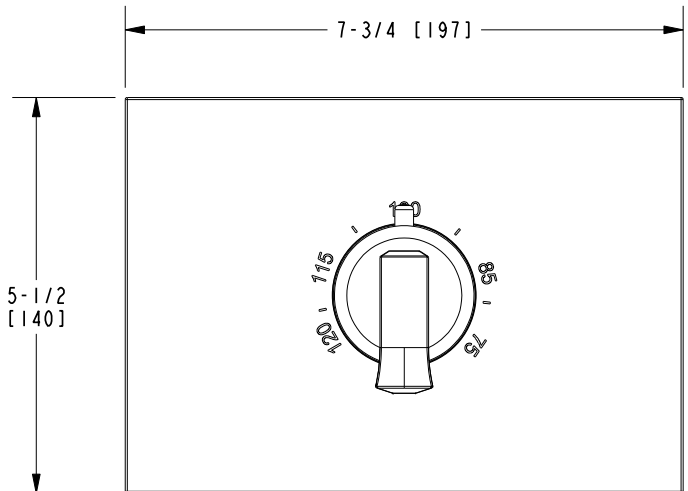
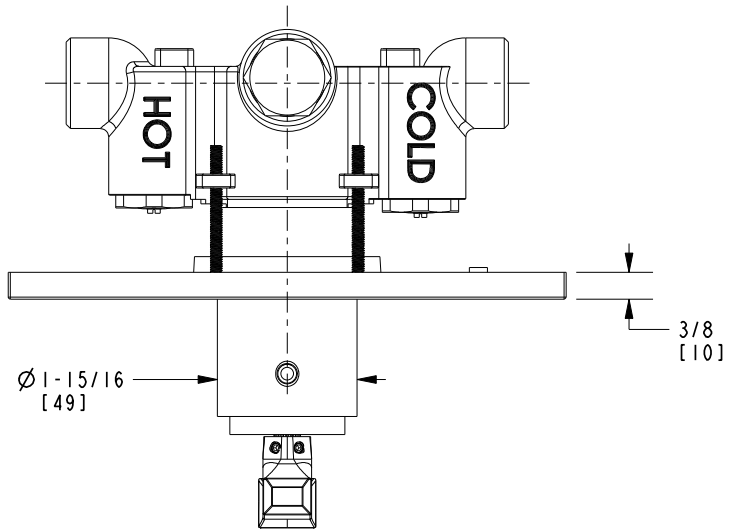
DWG NO.	3-2574TS	REV	A
SCALE	.312	REF.	-
SHEET	1	OF	3

Copyright 2005 BRASSTECH, INC.
THESE DRAWINGS AND THE DESIGNS
DEPICTED HEREIN ARE THE PROPRIETARY
PROPERTY OF BRASSTECH. ANY USE
OR REPRODUCTION IS SUBJECT TO
THE EXPRESS APPROVAL OF BRASSTECH.
UNAUTHORIZED USE IS STRICTLY
PROHIBITED. ALL RIGHTS RESERVED.

ZONE	REV	DESCRIPTION	DATE	APPROVED
-	A	EN-3429	10/16/17	J.M.
-	-	EN-2982	12/08/15	J.M.



BRASSTECH		2001 E. CARNEGIE AVE.	
INCORPORATED		SANTA ANA, CA 92705	
		(949) 417-5207	
DWG NO.	3-2574TS	REV	A
SCALE	.312	REF.	-
		SHEET	2 OF 3



BRASSTECH		2001 E. CARNEGIE AVE. SANTA ANA, CA 92705 (949) 417-5207	
INCORPORATED			
DWG NO.	3-2574TS		REV A
SCALE	.375	REF.	-
		SHEET	3 OF 3