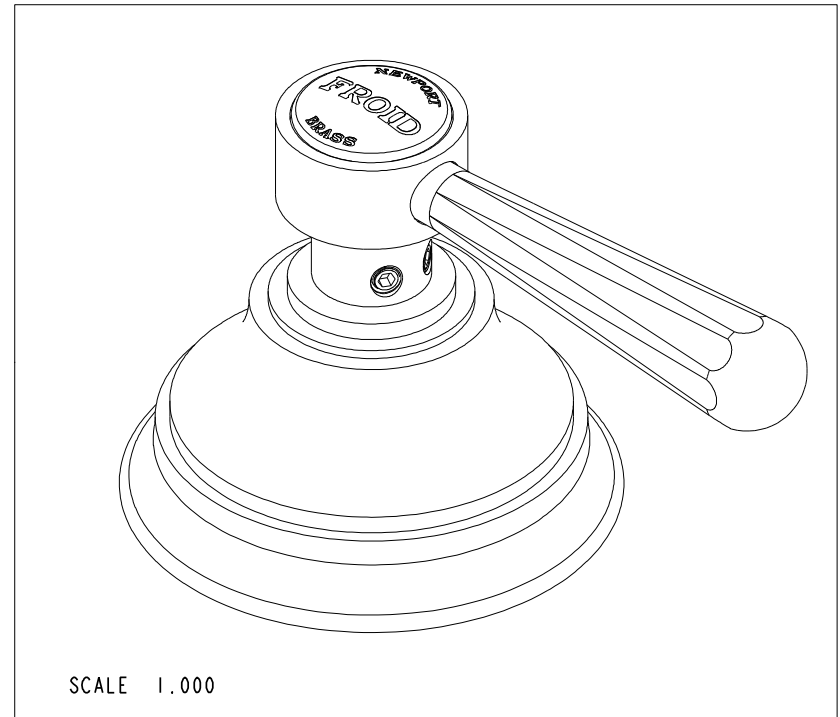
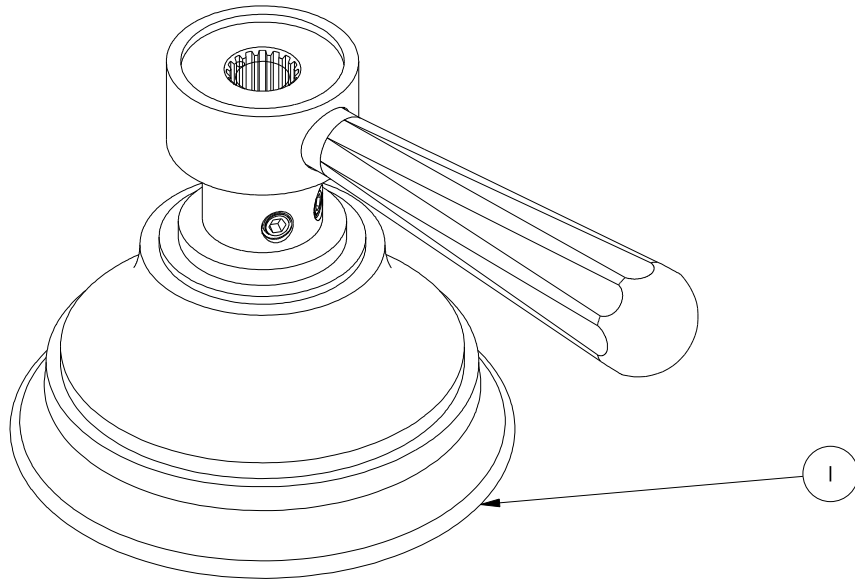
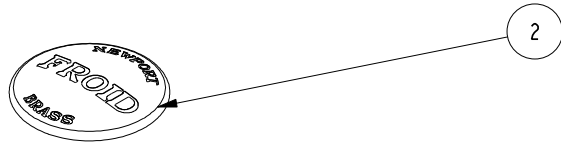


NOTES:

1. TO INSPECT ASSEMBLY, FOLLOW FIRST ARTICLE AND IN PROCESS INSPECTION SHEET.

BILL OF MATERIAL (CURRENT LEVEL)

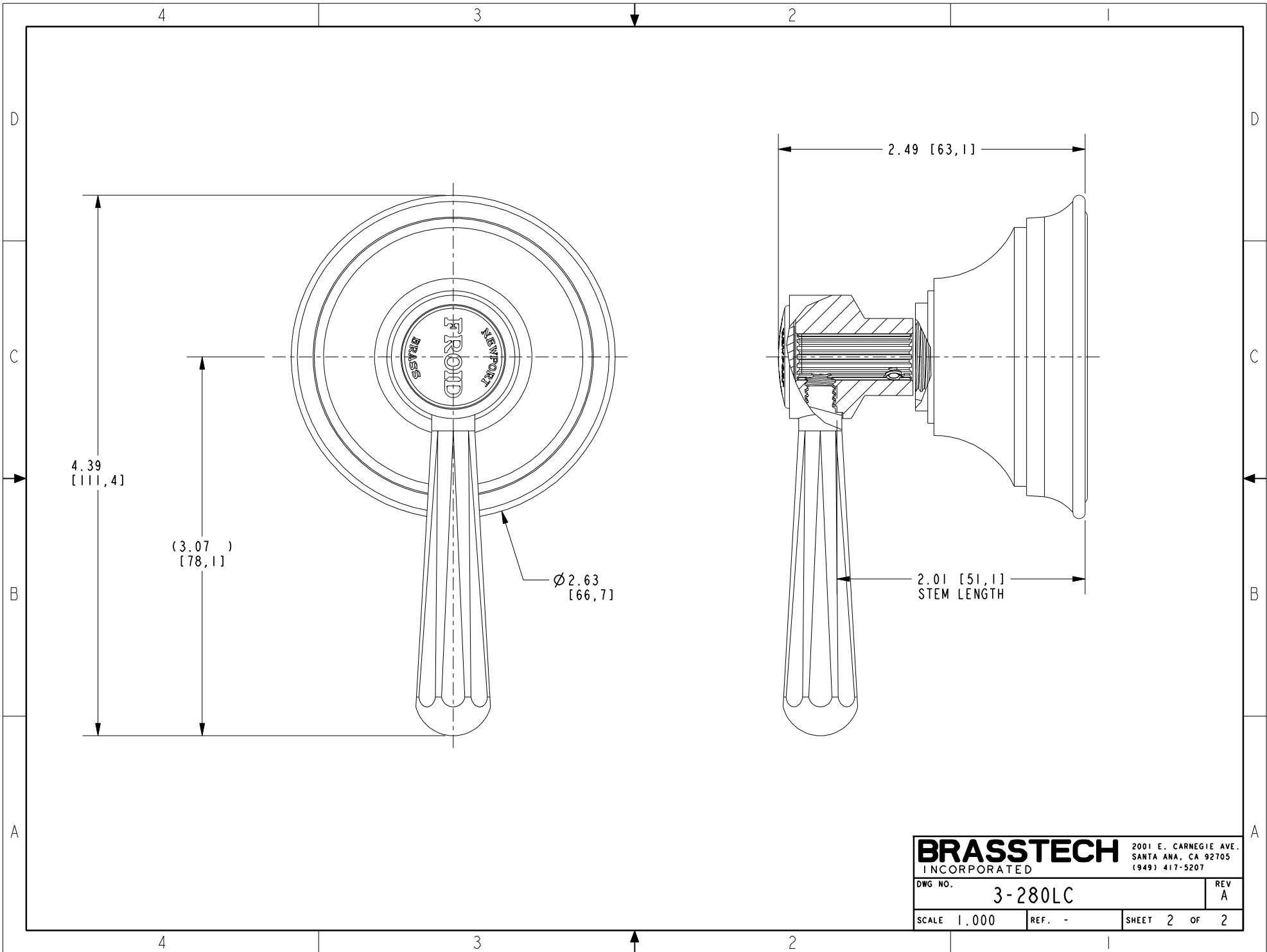
ITEM	PT/ASSY	DESCRIPTION	TYPE	QTY.
1	3-280L	HANDLE/ESCUTCHEON ASM	ASSEMBLY	1
2	1-131	FROID BUTTON W/ADH. TAB	ASSEMBLY	1



<p>TESTING - - -</p> <p>ASSEMBLY - - -</p> <p>PLATING - - -</p> <p>POLISHING - - -</p> <p>MACHINING - - -</p>					<p>UNITS ARE: INCHES [MM]</p> <p>TOLERANCES ARE:</p> <p>FRACTIONS DECIMALS ANGLES</p> <p>±1/16" .X ±.1 [2.5] ±1°</p> <p>.XX ±.06 [1.5]</p> <p>(X.XXX) DENOTES CRITICAL DIMS.</p> <p>ALL THREADS ARE CRITICAL</p>		<p>BRASSTECH 2001 CARNEGIE AVE. INCORPORATED SANTA ANA, CA 92705 (949) 417-5207</p>	
<p>TOOLING FIXTURE # REMOVE ALL BURRS AND SHARP EDGES</p>					<p>DRAWN JIMSON 12/16/20</p> <p>CHECKED R.S. 12/16/20</p> <p>APPROVED R.S. 12/16/20</p>		<p>FROID LVR/HDL ESC ASM</p>	
<p>APPROVED</p>					<p>DWG NO. 3-280LC</p>		<p>REV A</p>	
<p>SCALE 1.000</p>					<p>REF. -</p>		<p>SHEET 1 OF 2</p>	

COPYRIGHT 2005 BRASSTECH, INC. THESE DRAWINGS AND THE DESIGNS DEPICTED HEREIN ARE THE PROPRIETARY PROPERTY OF BRASSTECH. ANY USE OR REPRODUCTION IS SUBJECT TO THE EXPRESS APPROVAL OF BRASSTECH. UNAUTHORIZED USE IS STRICTLY PROHIBITED. ALL RIGHTS RESERVED.

ZONE	REV	DESCRIPTION	DATE	APPROVED
-	A	EN-4300j	12/16/20	R.S.
-	-	EO-0299	03/04/04	-



BRASSTECH		2001 E. CARNEGIE AVE. SANTA ANA, CA 92705 (949) 417-5207	
DWG NO.	3-280LC		REV A
SCALE 1.000	REF. -	SHEET 2 OF 2	