

4

3

2

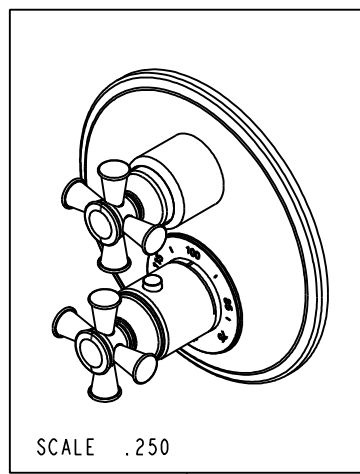
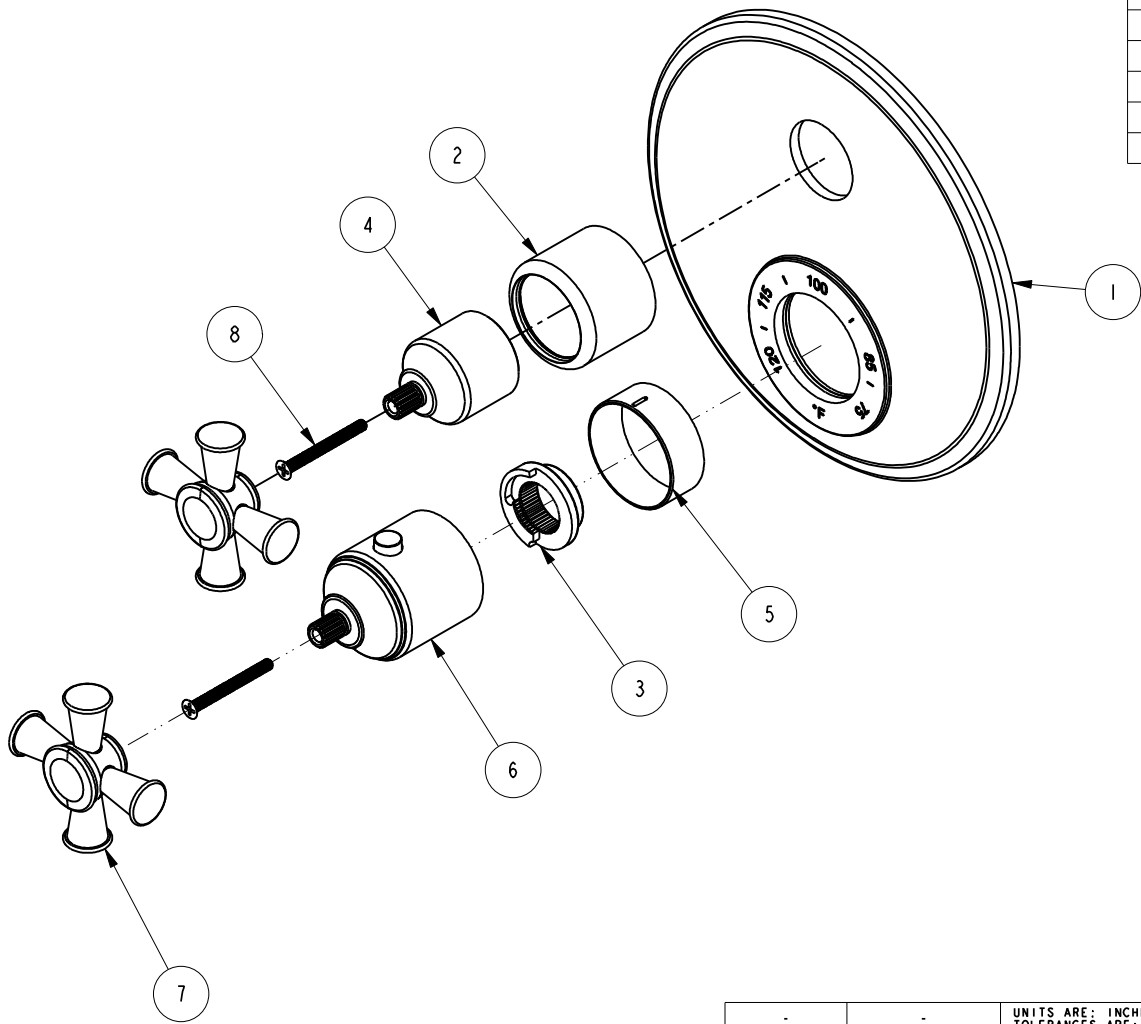
1

NOTES:

(NI) 1. FIT / FORM / FUNCTION SHALL FOLLOW PS-E.008.

BILL OF MATERIAL (CURRENT LEVEL)

| ITEM | PT/ASSY | DESCRIPTION | TYPE | QTY. |
|------|---------|----------------------------------|----------|------|
| 1 | 2-994 | TUB AND SHOWER PLATE ASM | ASSEMBLY | 1 |
| 2 | 2-989 | COLLAR ASM | ASSEMBLY | 1 |
| 3 | 91308 | TEMP LIMIT STOP - THERMO | PART | 1 |
| 4 | 12344 | HANDLE BONNET | PART | 1 |
| 5 | 12345 | SLEEVE - THERMO | PART | 1 |
| 6 | 2-991 | THERMO BONNET ASM | ASSEMBLY | 1 |
| 7 | 20-141 | CROSS HANDLE ASM | ASSEMBLY | 2 |
| 8 | 92113 | SCRW, M4 X .7 X 40 PHL FLT HD SS | PART | 2 |



| | | | |
|-----------|-----------|----------------------------------|---------|
| TESTING | - | - | - |
| ASSEMBLY | - | - | - |
| PLATING | - | - | - |
| POLISHING | - | NEXT ASSY | USED ON |
| MACHINING | - | APPLICATION | |
| TOOLING | FIXTURE # | REMOVE ALL BURRS AND SHARP EDGES | |

UNITS ARE: INCHES [MM]
 TOLERANCES ARE:
 FRACTIONS DECIMALS ANGLES
 $\pm 1/16''$.X $\pm .1$ [2,5] $\pm 1''$
 $\pm .06$ [1,5]
 (X.XXX) DENOTES CRITICAL DIMS.
 ALL THREADS ARE CRITICAL

DRAWN AMARISH 01/17/17
 CHECKED RAVINDRA 01/17/17
 APPROVED R.S 01/17/17

BRASSTECH 2001 CARNEGIE AVE.
 INCORPORATED SANTA ANA, CA 92705
 (949) 417-5207

THERMO TUB / SHOWER

DWG NO. 3-2903TR REV B

SCALE .375 REF. - SHEET 1 OF 2

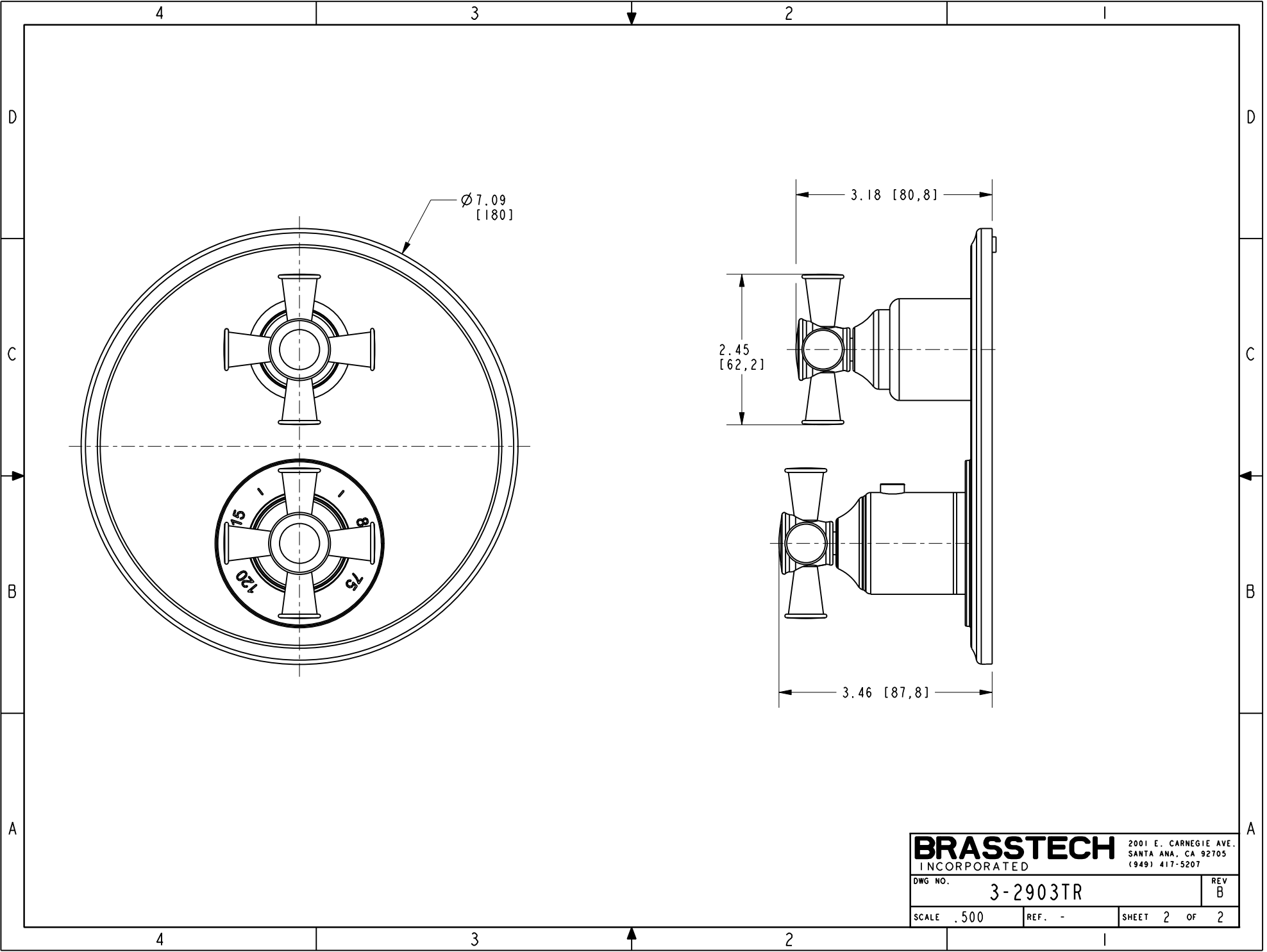
| - | B | EN-3236 | 01/17/17 | R.S | COPYRIGHT 2005 BRASSTECH, INC. THESE DRAWINGS AND THE DESIGNS DEPICTED HEREIN ARE THE PROPRIETARY PROPERTY OF BRASSTECH. ANY USE OR REPRODUCTION IS SUBJECT TO THE EXPRESS APPROVAL OF BRASSTECH. UNAUTHORIZED USE IS STRICTLY PROHIBITED. ALL RIGHTS RESERVED. |
|------|-----|-------------|----------|----------|--|
| - | A | EN-2775g | 10/02/15 | J.M. | |
| - | - | EN-2838c | 08/21/15 | J.M. | |
| ZONE | REV | DESCRIPTION | DATE | APPROVED | |

4

3

2

1



| | | |
|------------------|----------|-----------------------|
| BRASSTECH | | 2001 E. CARNEGIE AVE. |
| INCORPORATED | | SANTA ANA, CA 92705 |
| | | (949) 417-5207 |
| DWG NO. | 3-2903TR | REV B |
| SCALE .500 | REF. - | SHEET 2 OF 2 |