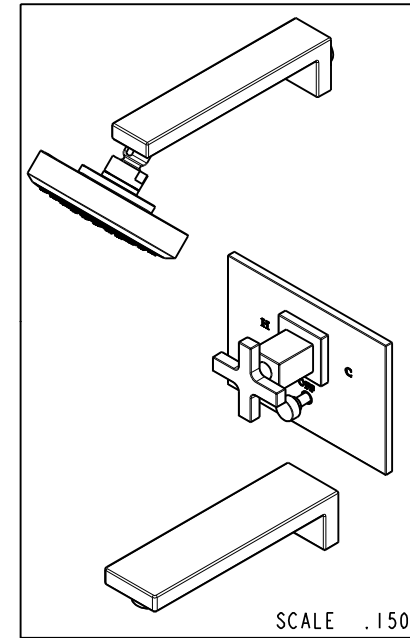
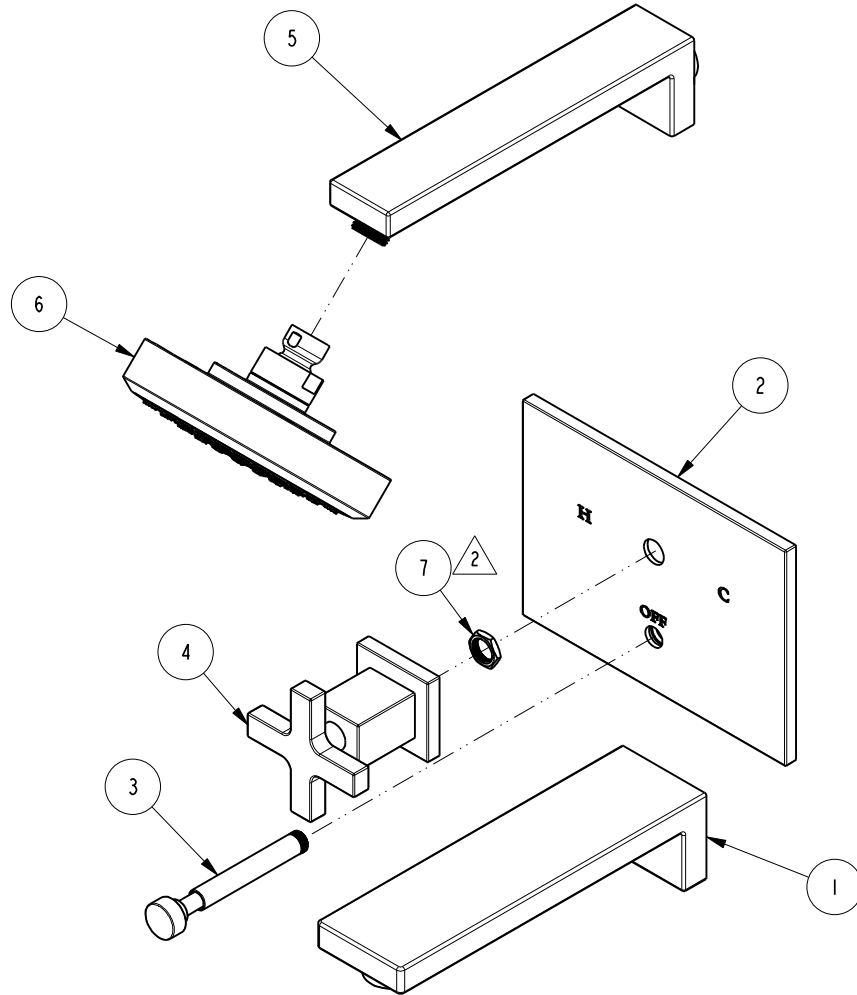


NOTES:

1. TO INSPECT ASSEMBLY, FOLLOW FIRST ARTICLE AND IN PROCESS INSPECTION SHEET.
2. SEAL NUT 10259 IN A PLASTIC BAG AND TAPE TO THE BACK OF THE TRIM PLATE.

**BILL OF MATERIAL (CURRENT LEVEL)**

ITEM	PT/ASSY	DESCRIPTION	TYPE	QTY.
1	8-030	WALL TUB SPOUT ASM	ASSEMBLY	1
2	2-641	BP TUB SHOWER PLATE ASSEMBLY	ASSEMBLY	1
3	2-618	DIVERTER TRIM KIT	ASSEMBLY	1
4	3-577	HANDLE CROSS/ ESC ASM	ASSEMBLY	1
5	201-2	9" SHOWER ARM [METRO]	ASSEMBLY	1
6	2141	CONTEMP. SHOWER HEAD - SINGLE JET	ASSEMBLY	1
7	10259	HEX NUT 9/16 X 20 MADE	PART	1



ZONE	REV	DESCRIPTION	DATE	APPROVED
-	B	EN-4441	04/18/22	N.S.
-	A	EN-4300e	04/28/21	R.S.
-	-	EN-3084c	10/05/16	AN

COPYRIGHT 2005 BRASSTECH, INC. THESE DRAWINGS AND THE DESIGNS DEPICTED HEREIN ARE THE PROPRIETARY PROPERTY OF BRASSTECH. ANY USE OR REPRODUCTION IS SUBJECT TO THE EXPRESS APPROVAL OF BRASSTECH. UNAUTHORIZED USE IS STRICTLY PROHIBITED. ALL RIGHTS RESERVED.

TESTING	-	-	-
ASSEMBLY	-	-	-
PLATING	-	-	-
POLISHING	-	NEXT ASSY	USED ON
MACHINING	-	APPLICATION	
TOOLING FIXTURE #	REMOVE ALL BURRS AND SHARP EDGES		

UNITS ARE: INCHES [MM]	
TOLERANCES ARE:	
FRACTIONS	DECIMALS
±1/16"	.X ±.1 [2,5]
	.XX ±.06 [1,5]
ANGLES ±°	
(X.XXX) DENOTES CRITICAL DIMS.	
ALL THREADS ARE CRITICAL	
DRAWN	J.T. 04/18/22
CHECKED	N.S. 04/18/22
APPROVED	N.S. 04/18/22

**BRASSTECH** 2001 CARNEGIE AVE.  
INCORPORATED SANTA ANA, CA 92705  
(949) 417-5207

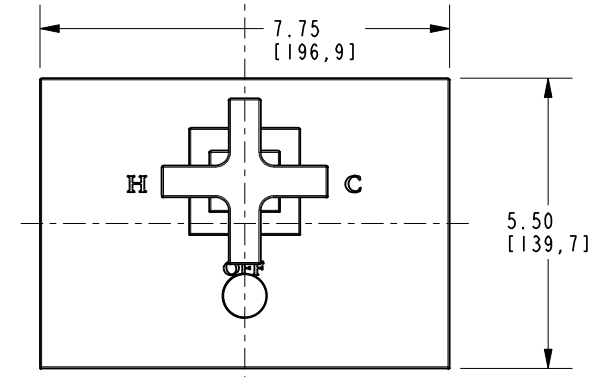
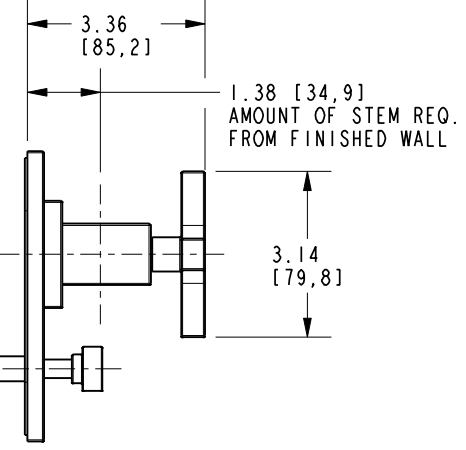
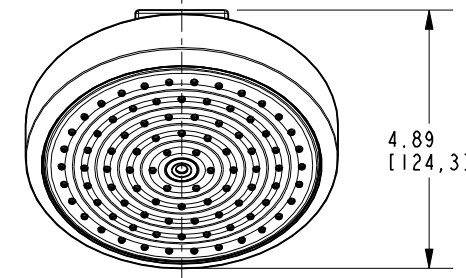
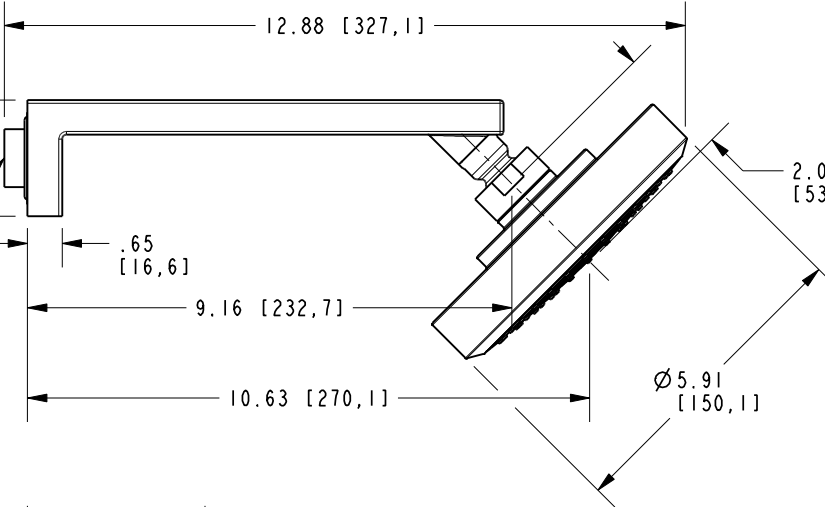
**BP TUB & SHOWER TRIM SET**

DWG NO.	3-2992BP	REV	B
SCALE	.250	REF.	-
SHEET	1	OF	2

Ø 1.10  
[27,9]

2.20  
[55,9]

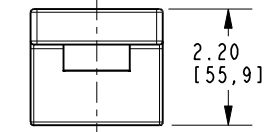
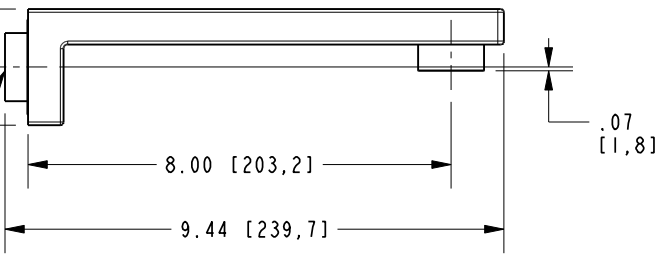
1/2 NPT



Ø 1.30  
[32,9]

2.20  
[55,9]

1/2 NPT  
INLET



<b>BRASSTECH</b>		2001 E. CARNEGIE AVE. SANTA ANA, CA 92705 (949) 417-5207	
DWG NO.	3-2992BP	REV	B
SCALE	.275	REF.	-
		SHEET	2 OF 2