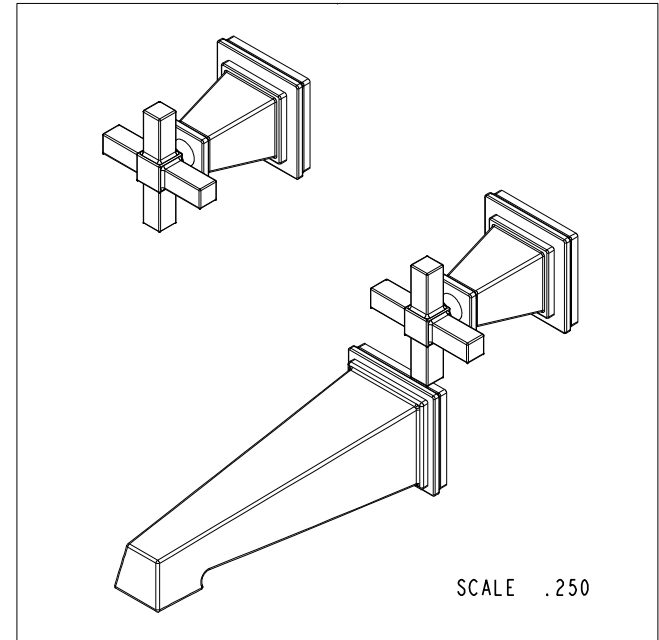
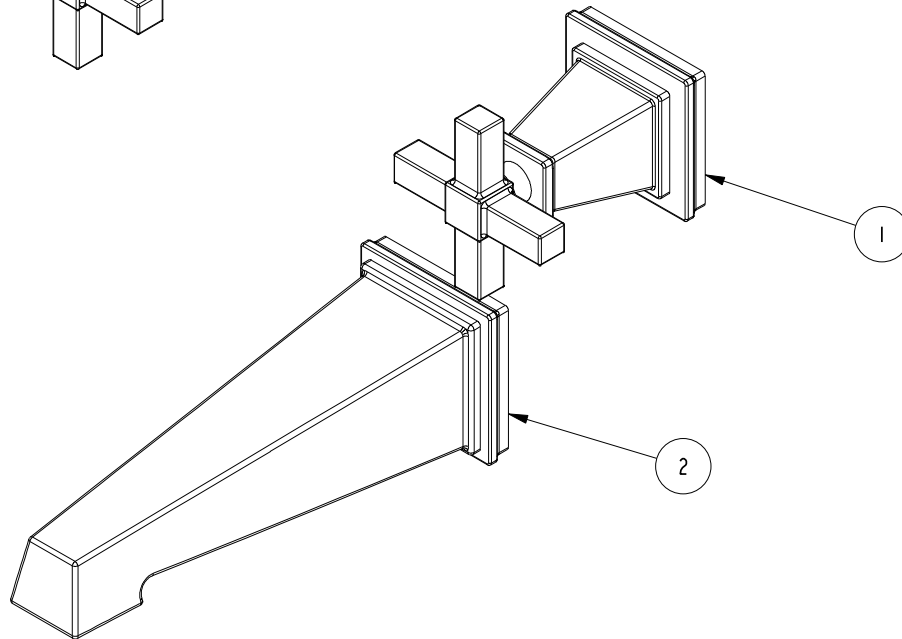
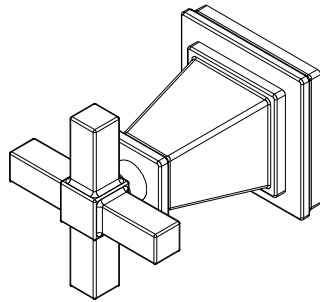


NOTES:

1. TO INSPECT ASSEMBLY, FOLLOW FIRST ARTICLE AND IN PROCESS INSPECTION SHEET.

BILL OF MATERIAL (CURRENT LEVEL)

ITEM	PT/ASSY	DESCRIPTION	TYPE	QTY.
1	3-581	CROSS HANDLE W/ESC.	ASSEMBLY	2
2	3-583	WALL TUB SPOUT ASM	ASSEMBLY	1



ZONE	REV	DESCRIPTION	DATE	APPROVED	TESTING	ASSEMBLY	PLATING	POLISHING	MACHINING	TOOLING FIXTURE #	APPLICATION
-	A	EN-3961-2	05/22/20	R.S.	-	-	-	-	-	-	-
-	-	EN-3061	08/09/16	J.M.	-	-	-	-	-	-	-
-	-	-	-	-	-	-	-	-	-	-	USED ON
-	-	-	-	-	-	-	-	-	-	-	REMOVE ALL BURRS AND SHARP EDGES

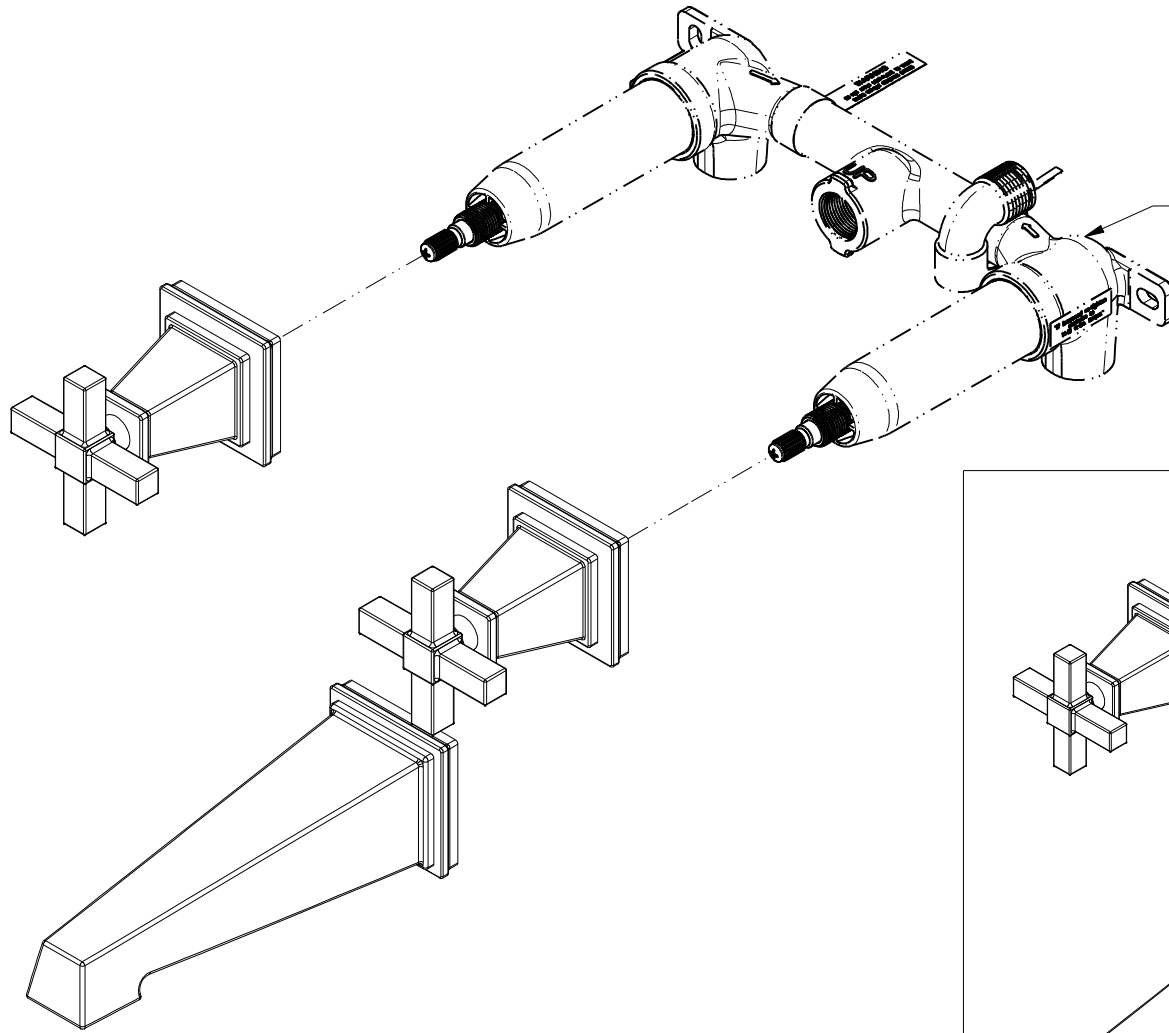
COPYRIGHT 2005 BRASSTECH, INC. THESE DRAWINGS AND THE DESIGNS DEPICTED HEREIN ARE THE PROPRIETARY PROPERTY OF BRASSTECH. ANY USE OR REPRODUCTION IS SUBJECT TO THE EXPRESS APPROVAL OF BRASSTECH. UNAUTHORIZED USE IS STRICTLY PROHIBITED. ALL RIGHTS RESERVED.

UNITS ARE: INCHES [MM]		
TOLERANCES ARE:		
FRACTIONS	DECIMALS	ANGLES
$\pm 1/16"$.X \pm .1 [2.5]	$\pm 1^\circ$
	.XX \pm .06 [1.5]	
(X.XXX) DENOTES CRITICAL DIMS. ALL THREADS ARE CRITICAL		
DRAWN	JIMSON	05/22/20
CHECKED	R.S.	05/22/20
APPROVED	R.S.	05/22/20

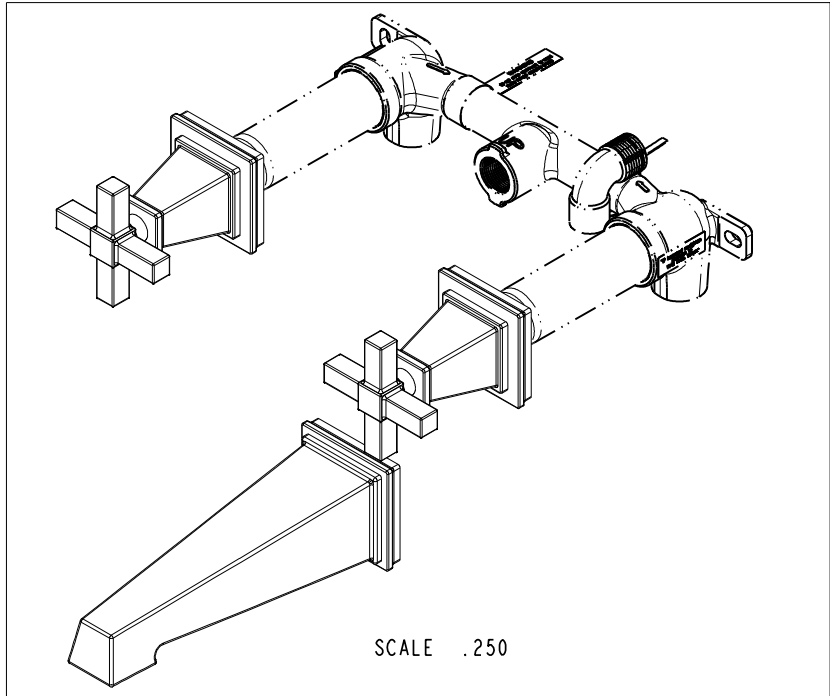
BRASSTECH 2001 CARNEGIE AVE.
INCORPORATED SANTA ANA, CA 92705
(949) 417-5207

WALL MOUNT TUB FAUCET

DWG NO.	REV
3-3155	A
SCALE .375	REF. -
SHEET	OF 3

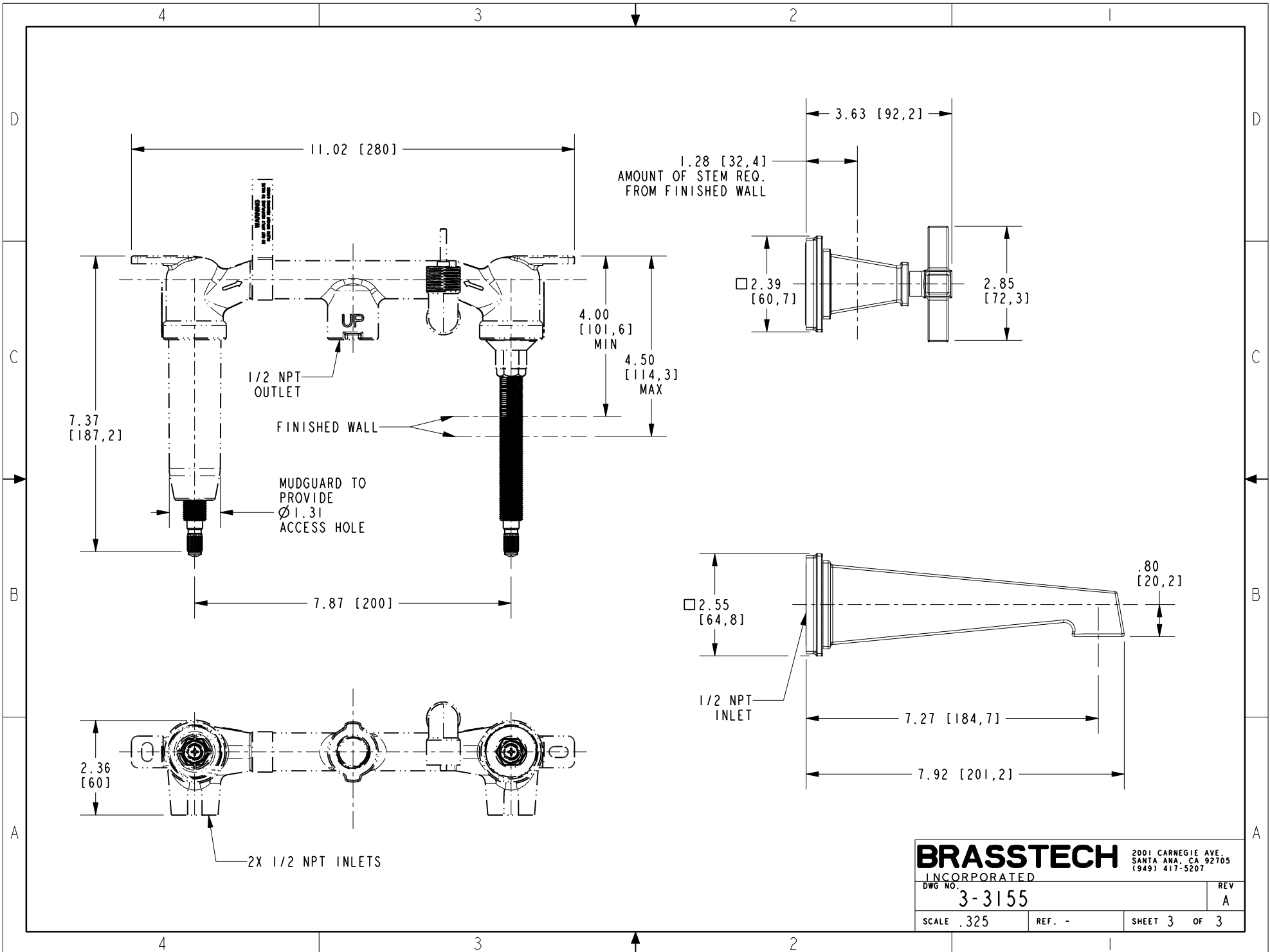


PN: 1-500U
SOLD SEPARATELY



SCALE .250

BRASSTECH		2001 CARNEGIE AVE. SANTA ANA, CA 92705 (949) 417-5207	
INCORPORATED			
DWG NO.	3-3155	REV	A
SCALE .325	REF. -	SHEET 2	OF 3



WARNING
DO NOT OPERATE WITH
MUDGUARD REMOVED

1.28 [32,4]
AMOUNT OF STEM REQ.
FROM FINISHED WALL

1/2 NPT
OUTLET

UP

FINISHED WALL

MUDGUARD TO
PROVIDE
Ø1.31
ACCESS HOLE

2.55 [64,8]

1/2 NPT
INLET

BRASSTECH 2001 CARNEGIE AVE.
INCORPORATED SANTA ANA, CA 92705
(949) 417-5207

DWG NO. 3-3155	REV A
SCALE .325	REF. -
SHEET 3 OF 3	