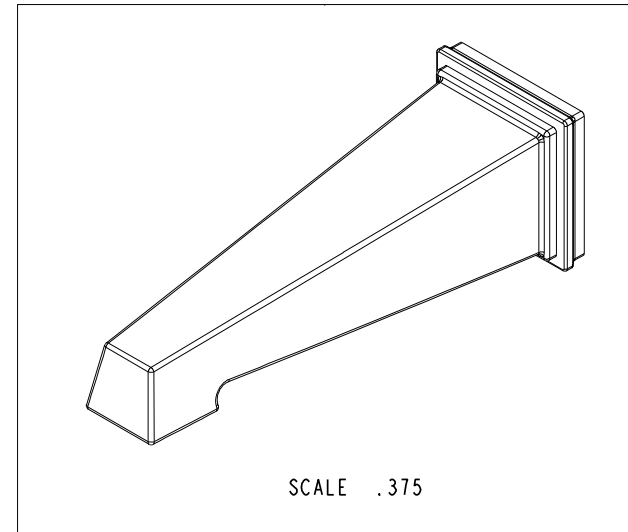
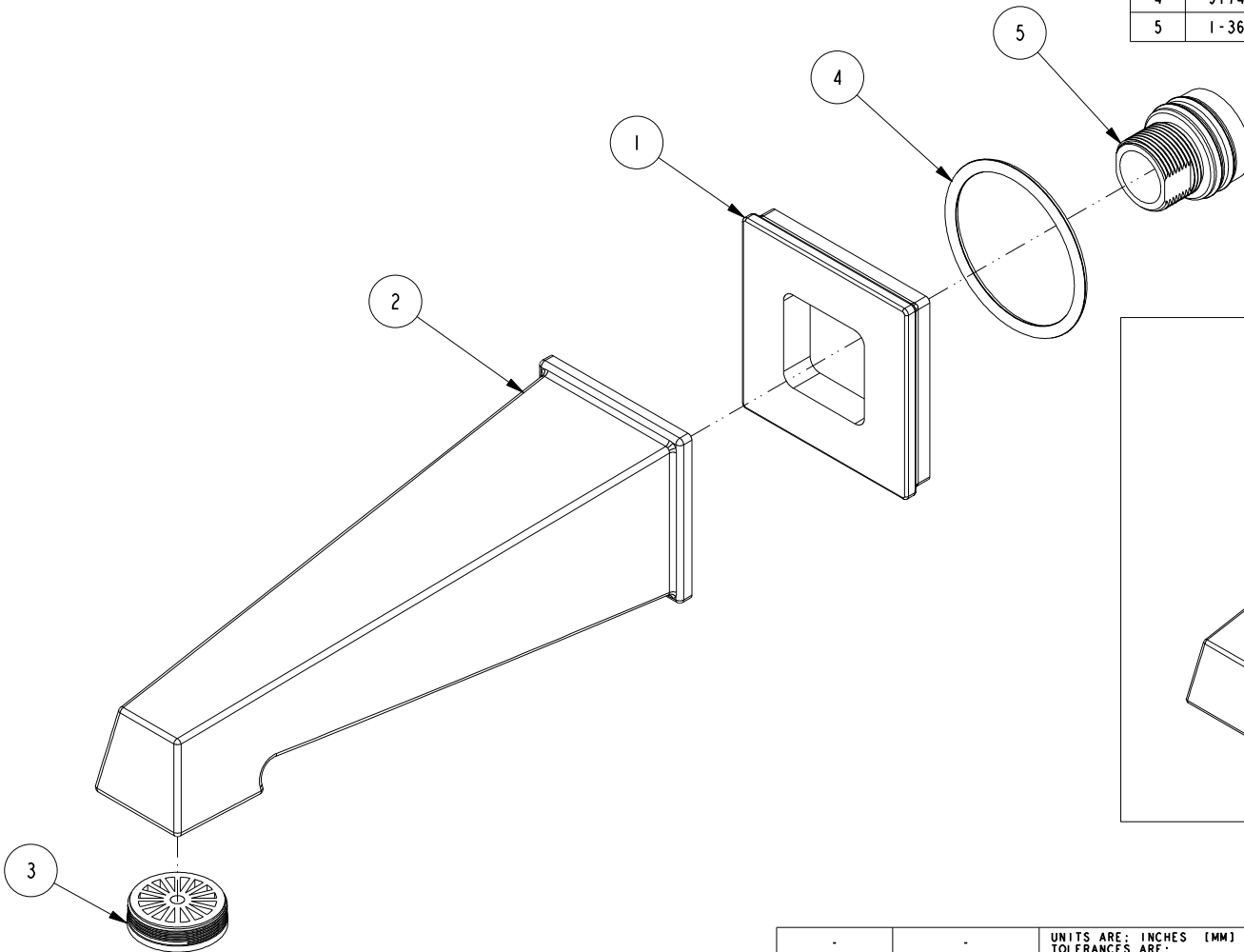


NOTES:

1. TO INSPECT ASSEMBLY, FOLLOW FIRST ARTICLE AND IN PROCESS INSPECTION SHEET.

**BILL OF MATERIAL (CURRENT LEVEL)**

ITEM	PT/ASSY	DESCRIPTION	TYPE	QTY.
1	12563	SPOUT BASE	PART	1
2	12557	WALL TUB SPOUT	PART	1
3	10224	STREAM STRAIGHTENER R/T WHITE	PART	1
4	91749	O-RING, #2-225, EPDM, 50 DURO - GREY	PART	1
5	1-368	WALL MOUNT SPOUT ADAPTOR ASM	ASSEMBLY	1



ZONE	REV	DESCRIPTION	DATE	APPROVED
-	B	EN-4300ii	01/25/21	R.S.
-	A	EN-3722	02/08/19	C.G.
-	-	EN-3061	08/17/16	J.M.

COPYRIGHT 2005 BRASSTECH, INC. THESE DRAWINGS AND THE DESIGNS DEPICTED HEREIN ARE THE PROPRIETARY PROPERTY OF BRASSTECH. ANY USE OR REPRODUCTION IS SUBJECT TO THE EXPRESS APPROVAL OF BRASSTECH. UNAUTHORIZED USE IS STRICTLY PROHIBITED. ALL RIGHTS RESERVED.

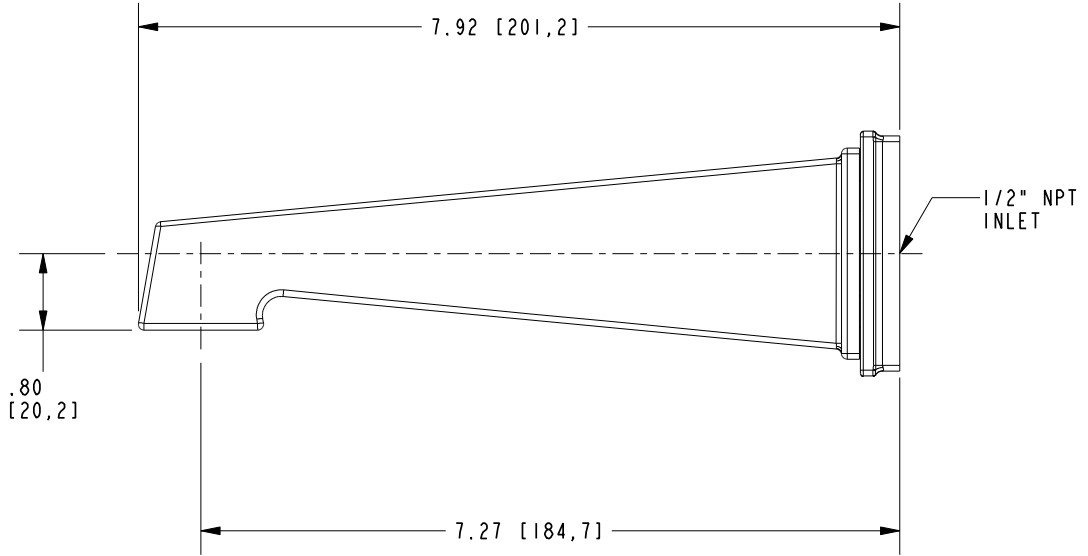
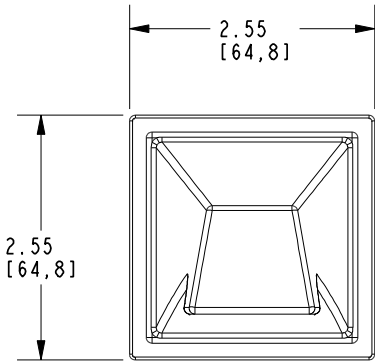
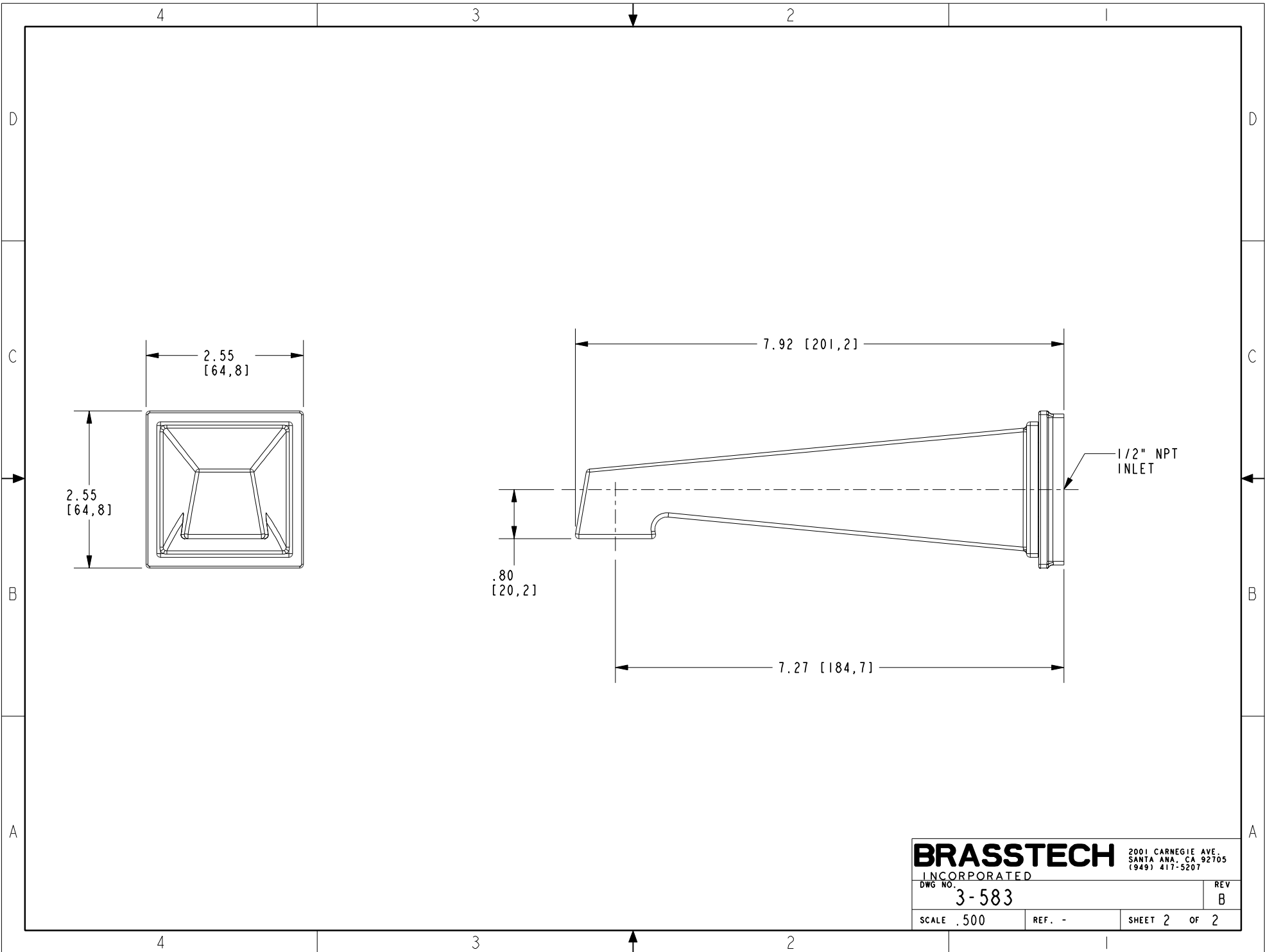
TESTING	ASSEMBLY	PLATING	POLISHING	MACHINING	TOOLING FIXTURE #
-	-	-	-	-	-
-	-	3-3145	3-3145	-	-
-	-	NEXT ASSY	USED ON	-	-
APPLICATION					
REMOVE ALL BURRS AND SHARP EDGES					

UNITS ARE: INCHES [MM]		
TOLERANCES ARE:		
FRACTIONS	DECIMALS	ANGLES
±1/16"	.X ±.1 [2.5]	±1°
	.XX ±.06 [1.5]	
(X.XXX) DENOTES CRITICAL DIMS. ALL THREADS ARE CRITICAL		
DRAWN	MANJUNATH	02/08/19
CHECKED	JINSON	02/08/19
APPROVED	C.G.	02/08/19

**BRASSTECH** 2001 CARNEGIE AVE. SANTA ANA, CA 92705 (949) 417-5207  
INCORPORATED

**WALL TUB SPOUT ASM**

DWG NO.	3-583	REV	B
SCALE	.500	REF.	-
SHEET	1	OF	2



**BRASSTECH** 2001 CARNEGIE AVE.  
 INCORPORATED SANTA ANA, CA 92705  
 (949) 417-5207

DWG NO. <b>3-583</b>	REV <b>B</b>
SCALE <b>.500</b>	REF. -
SHEET <b>2</b> OF <b>2</b>	