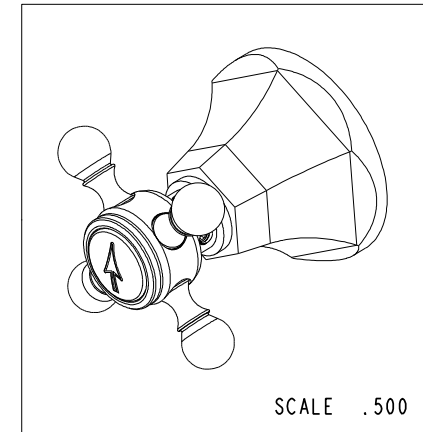
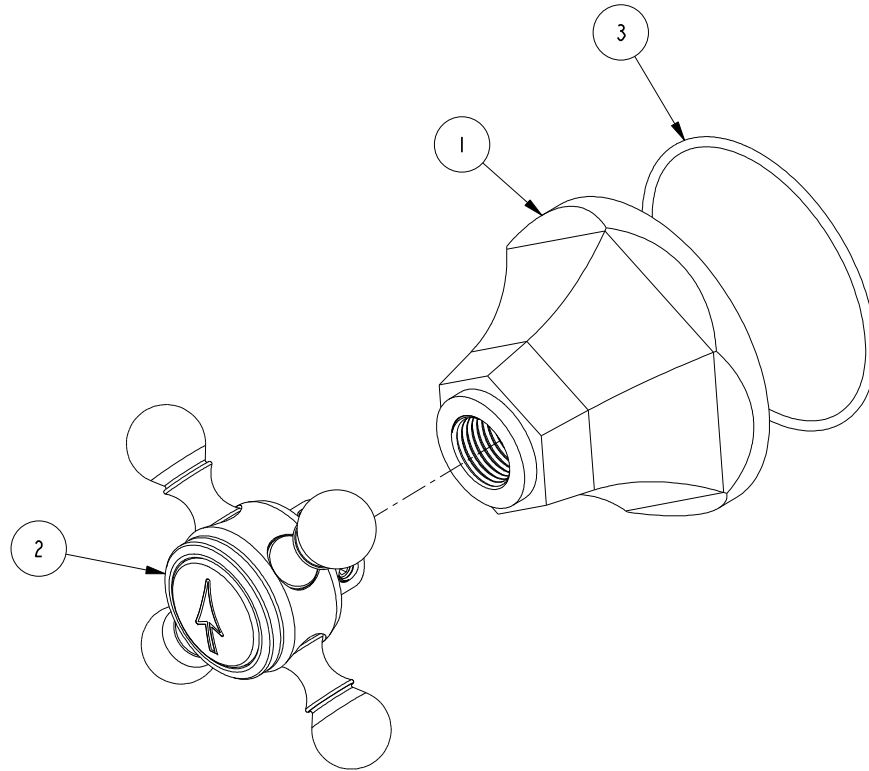


NOTES:

1. TO INSPECT ASSEMBLY, FOLLOW FIRST ARTICLE AND IN PROCESS INSPECTION SHEET.

**BILL OF MATERIAL (CURRENT LEVEL)**

ITEM	PT/ASSY	DESCRIPTION	TYPE	QTY.
1	10960	HEX ESCUTCHEON	PART	1
2	2-143	HANDLE ONLY, DIV.	ASSEMBLY	1
3	91754	O-RING, #2-034, EPDM, 50 DURO - GREY	PART	1

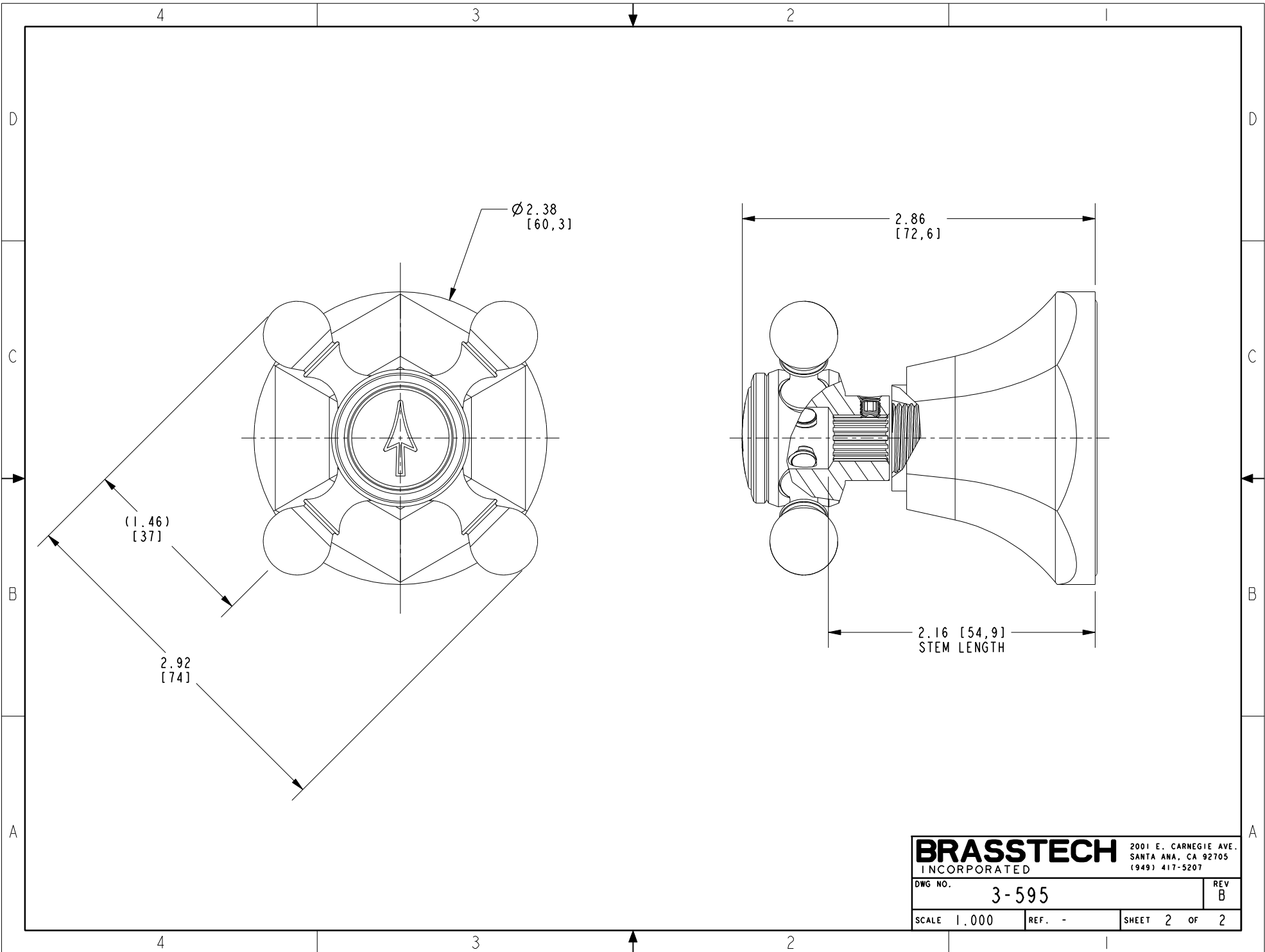


ZONE	REV	DESCRIPTION	DATE	APPROVED	TESTING	ASSEMBLY	PLATING	POLISHING	MACHINING	TOOLING FIXTURE #	APPLICATION
-	B	EN-4300j	12/16/20	R.S.	-	-	-	-	-	-	-
-	A	EN-3722	02/08/19	C.G.	-	-	3-1227	3-1222BP	-	-	-
-	-	EN-3194	12/16/16	AN	-	-	NEXT ASSY	USED ON	-	-	-
-	-	-	-	-	-	-	-	-	-	-	-

COPYRIGHT 2005 BRASSTECH, INC. THESE DRAWINGS AND THE DESIGNS DEPICTED HEREIN ARE THE PROPRIETARY PROPERTY OF BRASSTECH. ANY USE OR REPRODUCTION IS SUBJECT TO THE EXPRESS APPROVAL OF BRASSTECH. UNAUTHORIZED USE IS STRICTLY PROHIBITED. ALL RIGHTS RESERVED.

UNITS ARE: INCHES [MM]  
 TOLERANCES ARE:  
 FRACTIONS DECIMALS ANGLES  
 ±1/16" .X ±.1 [2.5] ±1°  
 .XX ±.06 [1.5]  
 (X.XXX) DENOTES CRITICAL DIMS.  
 ALL THREADS ARE CRITICAL  
 DRAWN JIMSON 12/16/20  
 CHECKED R.S. 12/16/20  
 APPROVED R.S. 12/16/20

**BRASSTECH** 2001 CARNEGIE AVE. SANTA ANA, CA 92705 (949) 417-5207  
 INCORPORATED  
**DIVERTER/FLOW CONTROL HANDLE, ARROW**  
 DWG NO. **3-595** REV B  
 SCALE .750 REF. - SHEET 1 OF 2



<b>BRASSTECH</b>		2001 E. CARNEGIE AVE. SANTA ANA, CA 92705 (949) 417-5207	
DWG NO.	3-595	REV	B
SCALE	1.000	REF.	-
		SHEET	2 OF 2