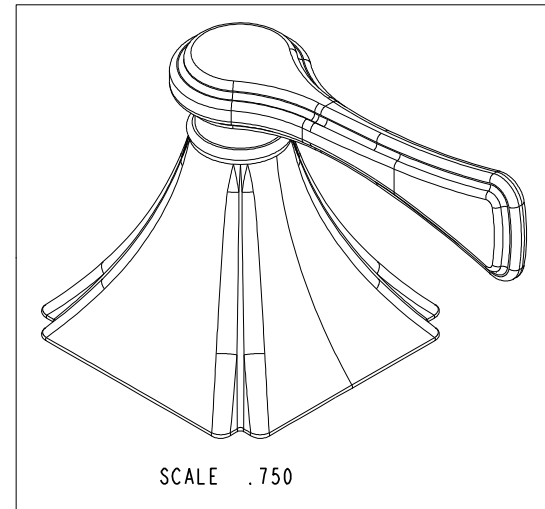
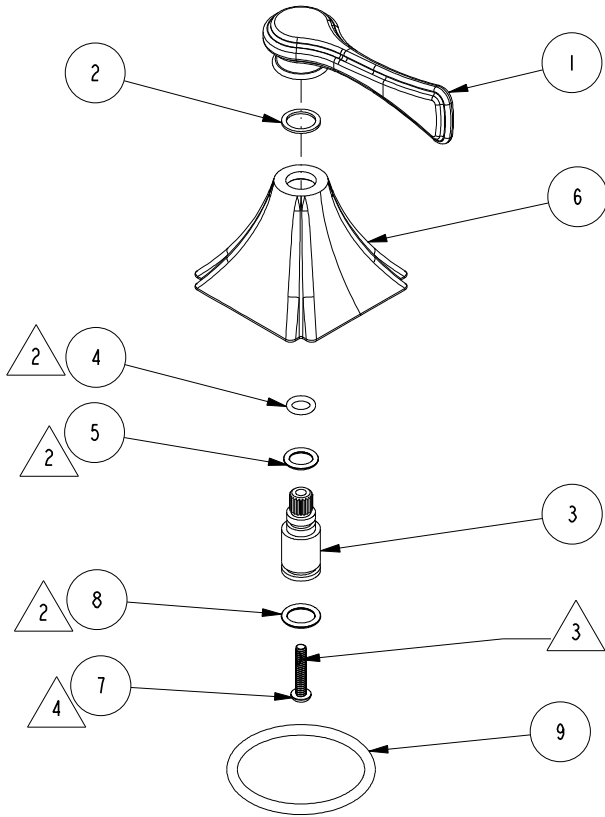


NOTES:

1. TO INSPECT ASSEMBLY, FOLLOW FIRST ARTICLE AND IN PROCESS INSPECTION SHEET.
2. APPLY LIGHT FILM OF DOW 111 CORNING SILICONE GREASE.
3. ITEM 7 AS RECEIVED HAS NYLON PATCH. IF NYLON PATCH IS MISSING, APPLY ADHESIVE LOCTITE 242 APPROX. WHERE SHOWN.
4. WHEN TIGHTENING ITEM 7 DURING ASSEMBLY, APPLY 6-8 LB-IN OF TORQUE.
5. TORQUE REQUIRED TO ROTATE HANDLE AFTER ASSEMBLY SHOULD BE 15 +/-5 OZ-IN.

**BILL OF MATERIAL (CURRENT LEVEL)**

ITEM	PT/ASSY	DESCRIPTION	TYPE	QTY.
1	11979	LEVER HANDLE - STRAIGHT	PART	1
2	91371	WASHER, HANDLE	PART	1
3	12506	HANDLE ADAPTER	PART	1
4	91049	O-RING, #2- 010, EPDM, 65-75 DURO, NSF 6I	PART	1
5	91255	O-RING, #2- 011, EPDM, 65-75 DURO, NSF-6I	PART	1
6	12777	HANDLE ESCUTCHEON	PART	1
7	92467	SCRW, 6-32 X 3/4" TORX BUTTON HD SS W/ NYLON PATCH	PART	1
8	91017	O-RING, #2- 012, EPDM, 65-75 DURO, NSF 6I	PART	1
9	91750	O-RING, 3.5 X 42MM ID, EPDM, 50 DURO - GREY	PART	1



-	C	EN-4300j	12/09/20	R.S.
-	B	EN-3722	02/08/19	C.G.
-	A	EN-3435	10/9/18	J.A.
-	-	EN-3435	10/27/17	J.A.
ZONE	REV	DESCRIPTION	DATE	APPROVED

COPYRIGHT 2005 BRASSTECH, INC. THESE DRAWINGS AND THE DESIGNS DEPICTED HEREIN ARE THE PROPRIETARY PROPERTY OF BRASSTECH. ANY USE OR REPRODUCTION IS SUBJECT TO THE EXPRESS APPROVAL OF BRASSTECH. UNAUTHORIZED USE IS STRICTLY PROHIBITED. ALL RIGHTS RESERVED.

TESTING	-	-	-
ASSEMBLY	-	-	-
PLATING	-	3-2537	3-2537
POLISHING	-	NEXT ASSY	USED ON
MACHINING	-	APPLICATION	
TOOLING FIXTURE #	REMOVE ALL BURRS AND SHARP EDGES		

UNITS ARE: INCHES [MM]  
 TOLERANCES ARE:  
 FRACTIONS DECIMALS ANGLES  
 $\pm 1/16"$  .X  $\pm .1$  [2.5]  
 .XX  $\pm .06$  [1.5]  
 (X.XXX) DENOTES CRITICAL DIMS.  
 ALL THREADS ARE CRITICAL

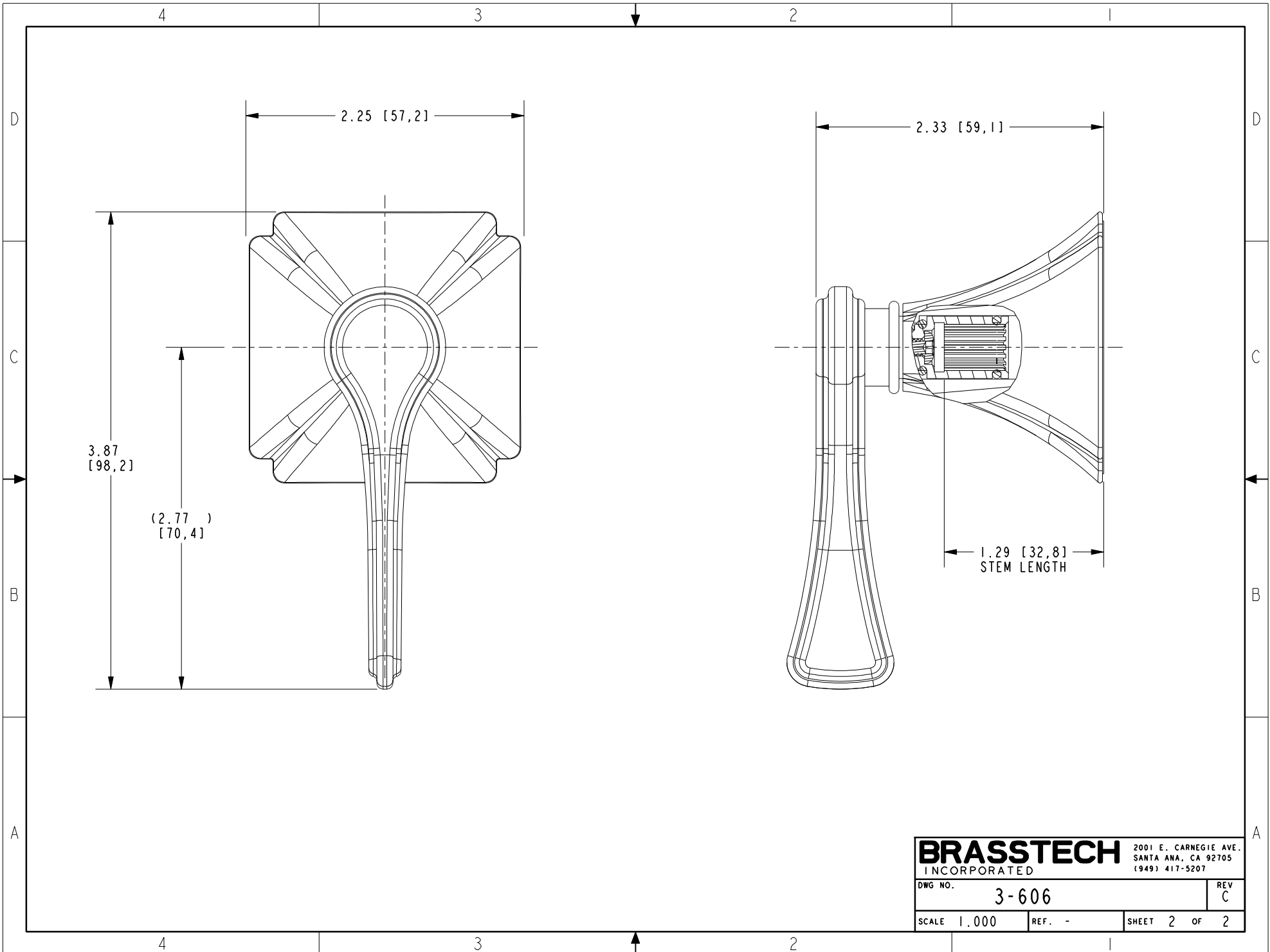
DRAWN	JIMSON	12/09/20
CHECKED	R.S.	12/09/20
APPROVED	R.S.	12/09/20

**BRASSTECH** 2001 CARNEGIE AVE.  
 INCORPORATED SANTA ANA, CA 92705  
 (949) 417-5207

**LEVER HANDLE ASM - STRAIGHT**

DWG NO. **3-606** REV **C**

SCALE .400 REF. - SHEET 1 OF 2



<b>BRASSTECH</b>		2001 E. CARNEGIE AVE. SANTA ANA, CA 92705 (949) 417-5207	
DWG NO.	3-606	REV	C
SCALE	1.000	REF.	-
		SHEET	2 OF 2