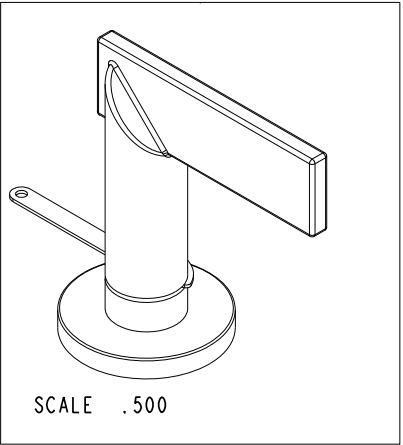
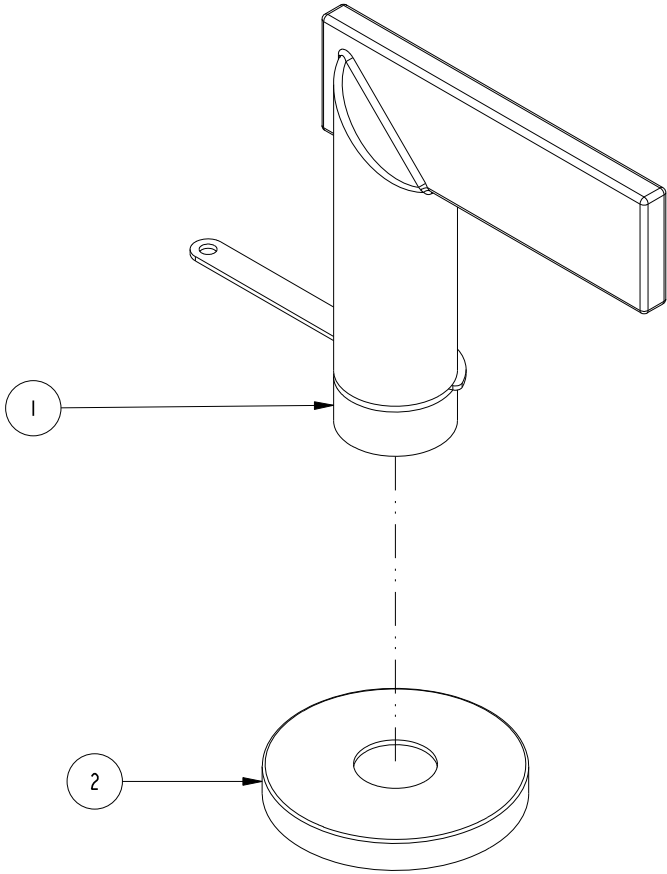


NOTES:

I. TO INSPECT ASSEMBLY, FOLLOW FIRST ARTICLE AND IN PROCESS INSPECTION SHEET.

BILL OF MATERIAL (CURRENT LEVEL)				
ITEM	PT/ASSY	DESCRIPTION	TYPE	QTY.
1	20-300	LEVER ASM	ASSEMBLY	1
2	20-301	ROUND HANDLE ESCUTCHEON ASM	ASSEMBLY	1



C	EN-4962	03/29/25	E.L.
B	EN-4300j	12/09/20	R.S.
A	EN-3334B	6/12/18	J.A.
-	EN-3334	8/30/17	J.A.
REV	DESCRIPTION	DATE	APPROVED

COPYRIGHT 2005 BRASSTECH, INC.
THESE DRAWINGS AND THE DESIGNS
DEPICTED HEREIN ARE THE PROPRIETARY
PROPERTY OF BRASSTECH. ANY USE
OR REPRODUCTION IS SUBJECT TO
THE EXPRESS APPROVAL OF BRASSTECH.
UNAUTHORIZED USE IS STRICTLY
PROHIBITED. ALL RIGHTS RESERVED.

-	-	UNITS ARE: INCHES [MM]		BRASSTECH 2001 CARNEGIE AVE. INCORPORATED SANTA ANA, CA 92705 (949) 417-5207		
-	-	TOLERANCES ARE:				
-	-	FRACTIONS	DECIMALS	ANGLES	LEVER HANDLE	
-	-	±1/16"	.X ±.1 [2.5] .XX ±.06 [1.5]	±1°		
2490	2490	ⓧ.XXX DENOTES CRITICAL DIMS. ALL THREADS ARE CRITICAL				
NEXT ASSY	USED ON	DRAWN	JINSON	12/09/20		
APPLICATION		CHECKED	R.S.	12/09/20	DWG NO. 3-608	REV C
REMOVE ALL BURRS AND SHARP EDGES		APPROVED	R.S.	12/09/20	SCALE .750	REF. - SHEET 1 OF 2

