

NOTES:

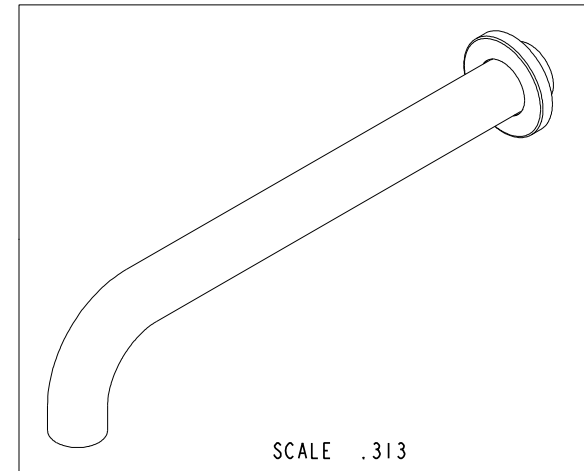
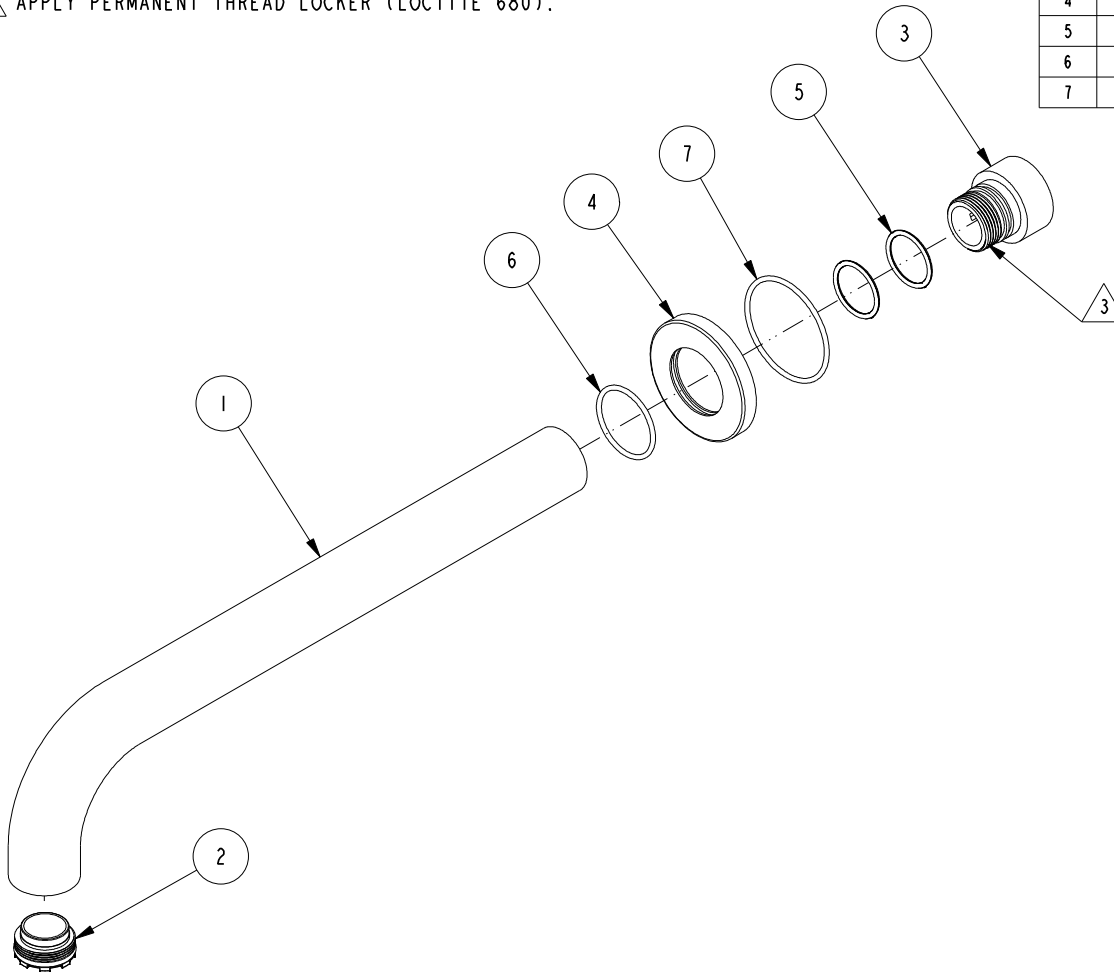
1. TO INSPECT ASSEMBLY, FOLLOW FIRST ARTICLE AND IN PROCESS INSPECTION SHEET.

2. APPLY THIN COAT OF SILICON GREASE ON TO ALL 'O' RINGS BEFORE INSTALLATION.

3. APPLY PERMANENT THREAD LOCKER (LOCTITE 680).

BILL OF MATERIAL (CURRENT LEVEL)

| ITEM | PT/ASSY | DESCRIPTION | TYPE | QTY. |
|------|---------|---|----------|------|
| 1 | 20-308 | W/M TUB- SPOUT BRAZE ASM | ASSEMBLY | 1 |
| 2 | 11711 | HIDDEN FAUCET AERATOR | PART | 1 |
| 3 | 11894 | WALL MOUNT TUB - ADAPTER | PART | 1 |
| 4 | 12285 | W/M TUB- ESCUTCHEON | PART | 1 |
| 5 | 91022 | O-RING, #2- 018, EPDM, 65-75 DURO, NSF 61 | PART | 2 |
| 6 | 91024 | O-RING, #2- 022, EPDM, 65-75 DURO | PART | 1 |
| 7 | 91766 | O-RING, #2-029, 50 DURO | PART | 1 |



| - | B | EN-4300ii | 01/25/21 | R.S. |
|------|-----|-------------|----------|----------|
| - | A | EN-3722 | 02/08/19 | C.G. |
| - | - | EN-3408 | 09/22/17 | J.M. |
| ZONE | REV | DESCRIPTION | DATE | APPROVED |

COPYRIGHT 2005 BRASSTECH, INC. THESE DRAWINGS AND THE DESIGNS DEPICTED HEREIN ARE THE PROPRIETARY PROPERTY OF BRASSTECH. ANY USE OR REPRODUCTION IS SUBJECT TO THE EXPRESS APPROVAL OF BRASSTECH. UNAUTHORIZED USE IS STRICTLY PROHIBITED. ALL RIGHTS RESERVED.

| | | | |
|-------------------|----------------------------------|-------------|---------|
| TESTING | - | - | - |
| ASSEMBLY | - | - | - |
| PLATING | - | - | - |
| POLISHING | - | NEXT ASSY | USED ON |
| MACHINING | - | APPLICATION | |
| TOOLING FIXTURE # | REMOVE ALL BURRS AND SHARP EDGES | | |

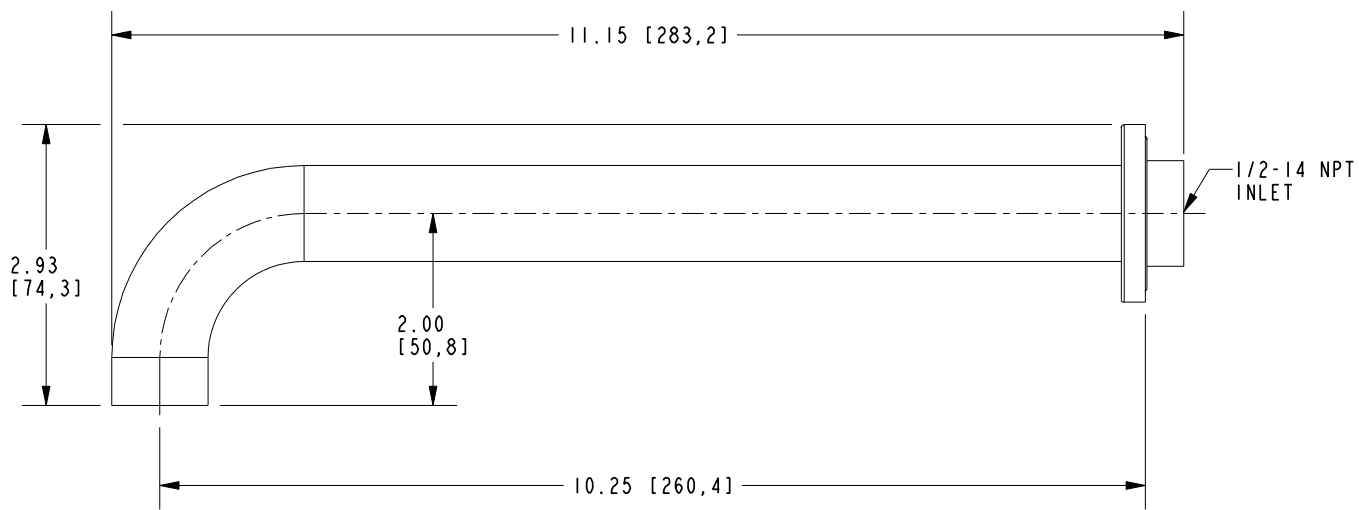
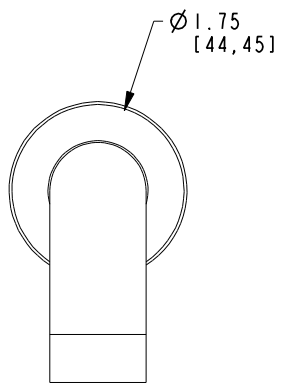
| | | | |
|---|----------------|----------|--|
| UNITS ARE: INCHES [MM] | | | |
| TOLERANCES ARE: | | | |
| FRACTIONS | DECIMALS | ANGLES | |
| ±1/16" | .X ±.1 [2.5] | ±° | |
| | .XX ±.06 [1.5] | | |
| (X.XXX) DENOTES CRITICAL DIMS. ALL THREADS ARE CRITICAL | | | |
| DRAWN | JIMSON | 02/08/19 | |
| CHECKED | C.G. | 02/08/19 | |
| APPROVED | C.G. | 02/08/19 | |

BRASSTECH 2001 CARNEGIE AVE. SANTA ANA, CA 92705 (949) 417-5207
 INCORPORATED

SPOUT & ESCUTCHEON ASM - WALL MOUNT TUB

DWG NO. **3-615** REV **B**

SCALE .375 REF. - SHEET 1 OF 2



| | | | |
|------------------|--------|---|------|
| BRASSTECH | | 2001 CARNEGIE AVE. SANTA ANA, CA 92705 (949) 417-5207 | |
| INCORPORATED | | DWG NO. | REV |
| 3-615 | | | B |
| SCALE .500 | REF. - | SHEET 2 | OF 2 |