

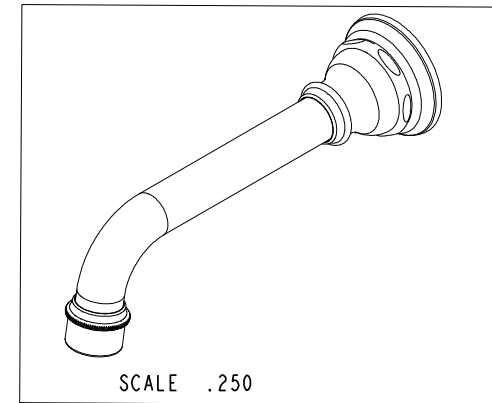
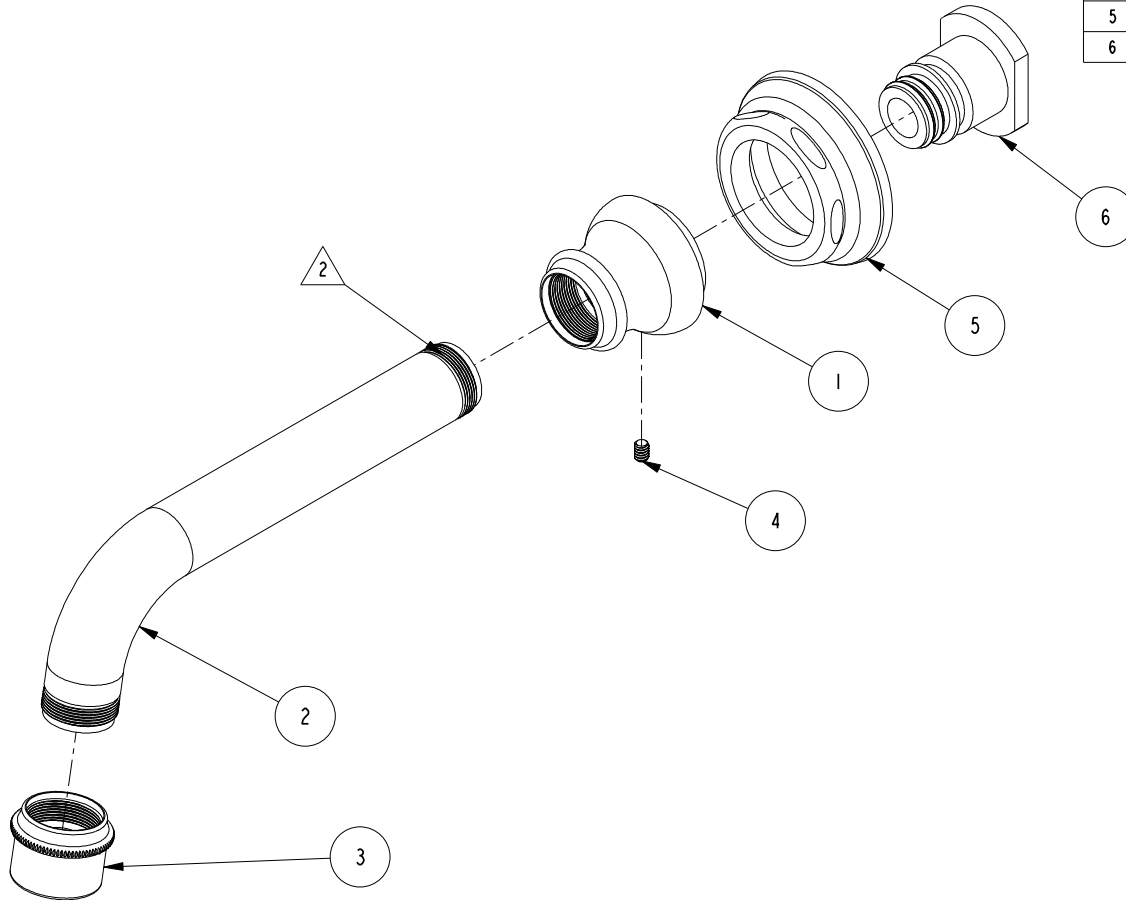
NOTES:

1. TO INSPECT ASSEMBLY, FOLLOW FIRST ARTICLE AND IN PROCESS INSPECTION SHEET.

2. APPLY LOCTITE 680

BILL OF MATERIAL (CURRENT LEVEL)

ITEM	PT/ASSY	DESCRIPTION	TYPE	QTY.
1	30241	TUB SPOUT BONNET	PART	1
2	13237	TUB SPOUT TUBE	PART	1
3	2-495	STREAM STRAIGHTENER ASM	ASSEMBLY	1
4	92013	SCRW, 10-24 X 1/4 SKT HD FLT PT SS	PART	1
5	2-560	TUB SPOUT ESCUTCHEON ASM	ASSEMBLY	1
6	1-164	WALL MOUNT QICK CONNECT ASM	ASSEMBLY	1



TESTING	ASSEMBLY	PLATING	POLISHING	MACHINING	TOOLING FIXTURE #	APPLICATION
-	-	-	-	-	-	REMOVE ALL BURRS AND SHARP EDGES

UNITS ARE: INCHES [MM]	
TOLERANCES ARE:	
FRACTIONS	DECIMALS
±1/16"	.X ±.1 [2.5]
	.XX ±.06 [1.5]
ANGLES ±1°	
(X.XXX) DENOTES CRITICAL DIMS.	
ALL THREADS ARE CRITICAL	
DRAWN	G.B. 06/17/19
CHECKED	J.M. 06/17/19
APPROVED	J.M. 06/17/19

BRASSTECH 2001 CARNEGIE AVE.
INCORPORATED SANTA ANA, CA 92705
(949) 417-5207

TUB SPOUT ASM

DWG NO.	3-667	REV	A
SCALE	.400	REF.	-
SHEET	1	OF	2

COPYRIGHT 2005 BRASSTECH, INC. THESE DRAWINGS AND THE DESIGNS DEPICTED HEREIN ARE THE PROPRIETARY PROPERTY OF BRASSTECH. ANY USE OR REPRODUCTION IS SUBJECT TO THE EXPRESS APPROVAL OF BRASSTECH. UNAUTHORIZED USE IS STRICTLY PROHIBITED. ALL RIGHTS RESERVED.

ZONE	REV	DESCRIPTION	DATE	APPROVED
-	A	EN-4300ii	01/25/21	R.S.
-	-	EN-3892	06/17/19	J.M.

