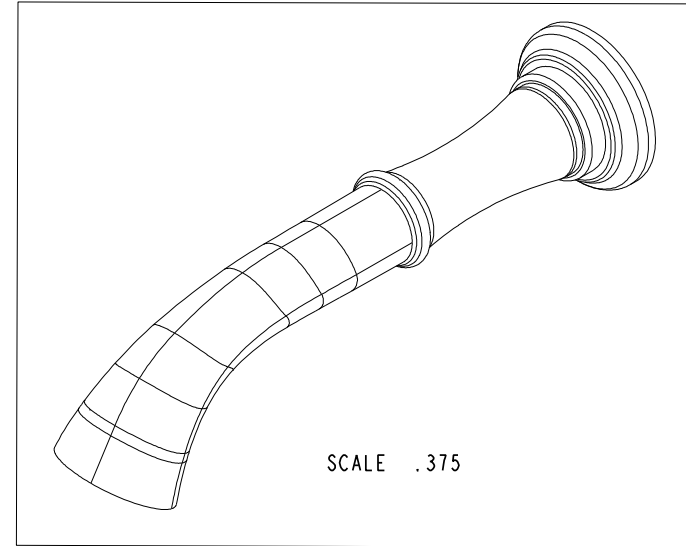
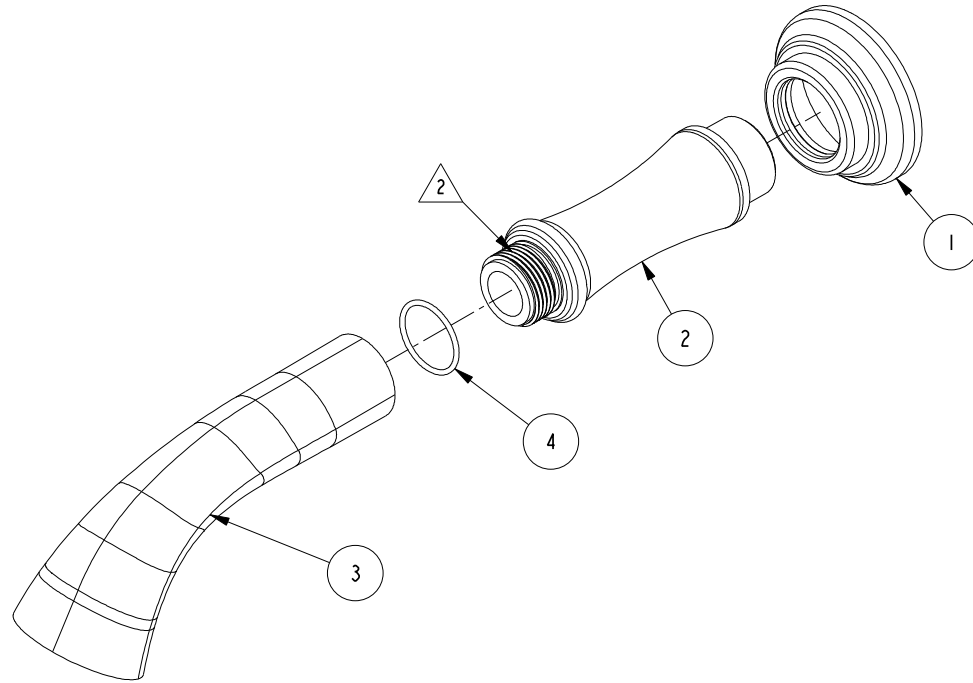


NOTES:

1. TO INSPECT ASSEMBLY, FOLLOW FIRST ARTICLE AND IN PROCESS INSPECTION SHEET.
2. APPLY LOCTITE 680
3. APPLY THIN COAT OF SILICON GREASE TO ALL "O" RINGS BEFORE INSTALLATION

**BILL OF MATERIAL (CURRENT LEVEL)**

| ITEM | PT/ASSY | DESCRIPTION                               | TYPE     | QTY. |
|------|---------|---|----------|------|
| 1    | 2-678   | ESCUTCHEON ASM WALL TUB SPOUT             | ASSEMBLY | 1    |
| 2    | 13234   | WALL SPOUT CONNECTOR                      | PART     | 1    |
| 3    | 30293   | R/T SPOUT                                 | PART     | 1    |
| 4    | 91372   | O-RING, #2- 021, EPDM, 65-75 DURO, NSF 61 | PART     | 1    |



| ZONE | REV | DESCRIPTION | DATE     | APPROVED |
|------|-----|-------------|----------|----------|
| -    | A   | EN-4300ii   | 01/25/21 | R. S.    |
| -    | -   | EN-3892     | 06/17/19 | J. M.    |

COPYRIGHT 2005 BRASSTECH, INC. THESE DRAWINGS AND THE DESIGNS DEPICTED HEREIN ARE THE PROPRIETARY PROPERTY OF BRASSTECH. ANY USE OR REPRODUCTION IS SUBJECT TO THE EXPRESS APPROVAL OF BRASSTECH. UNAUTHORIZED USE IS STRICTLY PROHIBITED. ALL RIGHTS RESERVED.

| TESTING           | -                                | -           | -       |
|-------------------|----------------------------------|-------------|---------|
| ASSEMBLY          | -                                | -           | -       |
| PLATING           | -                                | 3-669       | 3-669   |
| POLISHING         | -                                | NEXT ASSY   | USED ON |
| MACHINING         | -                                | APPLICATION |         |
| TOOLING FIXTURE # | REMOVE ALL BURRS AND SHARP EDGES |             |         |

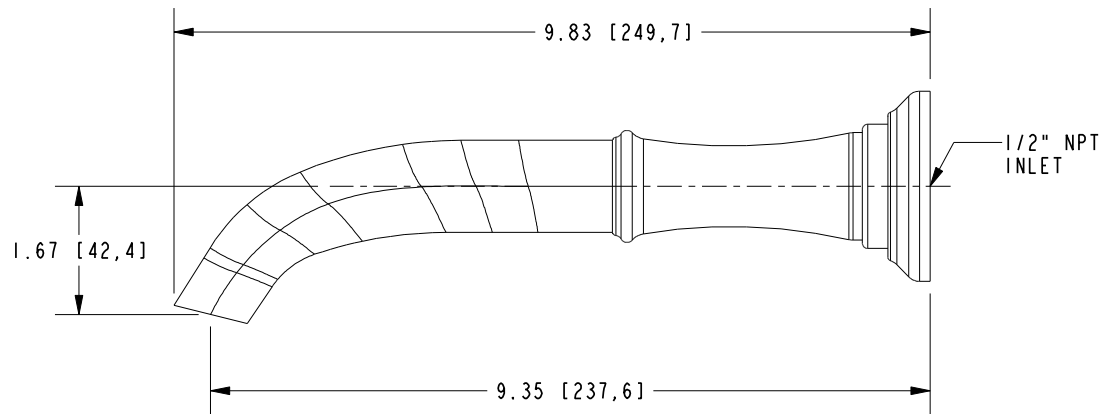
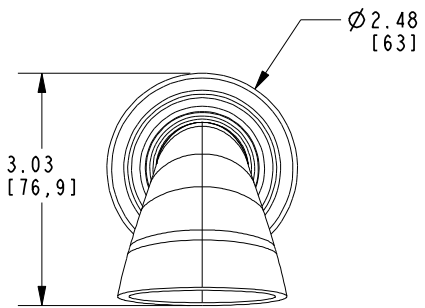
|   |                |          |
|---|----------------|----------|
| UNITS ARE: INCHES [MM]                                  |                |          |
| TOLERANCES ARE:   |                |          |
| FRACTIONS   | DECIMALS       | ANGLES   |
| ±1/16"  | .X ±.1 [2.5]   | ±1°      |
|   | .XX ±.06 [1.5] |          |
| (X.XXX) DENOTES CRITICAL DIMS. ALL THREADS ARE CRITICAL |                |          |
| DRAWN   | G.B.           | 06/17/19 |
| CHECKED   | J.M.           | 06/17/19 |
| APPROVED  | J.M.           | 06/17/19 |

**BRASSTECH** 2001 CARNEGIE AVE. SANTA ANA, CA 92705 (949) 417-5207  
INCORPORATED

**SPOUT ASM W/ ESCUTCHEON TUB**

DWG NO. **3-669** REV **A**

SCALE .400 REF. - SHEET 1 OF 2



|                  |        |   |     |
|------------------|--------|---|-----|
| <b>BRASSTECH</b> |        | 2001 CARNEGIE AVE.<br>SANTA ANA, CA 92705<br>(949) 417-5207 |     |
| INCORPORATED     |        | DWG NO.   | REV |
|                  |        | 3-669   | A   |
| SCALE .400       | REF. - | SHEET 2 OF 2  |     |