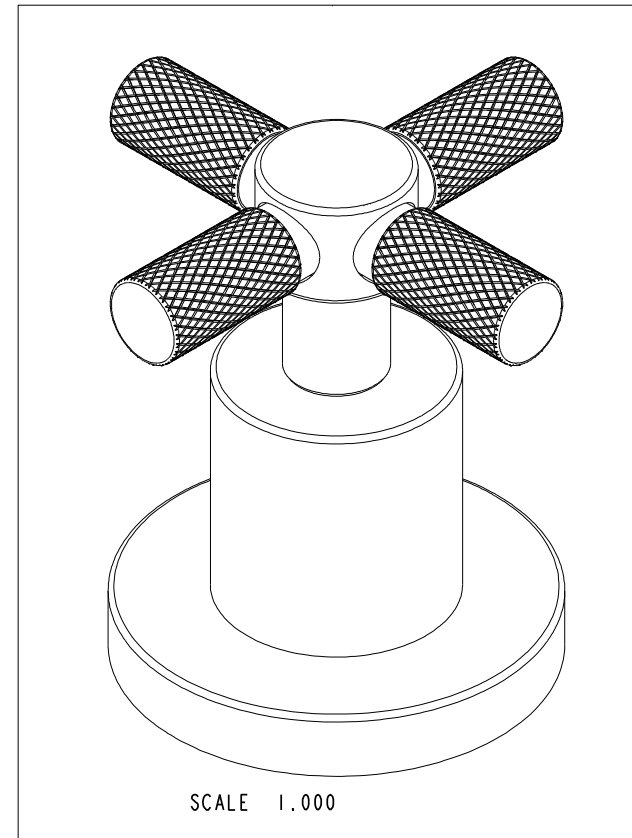
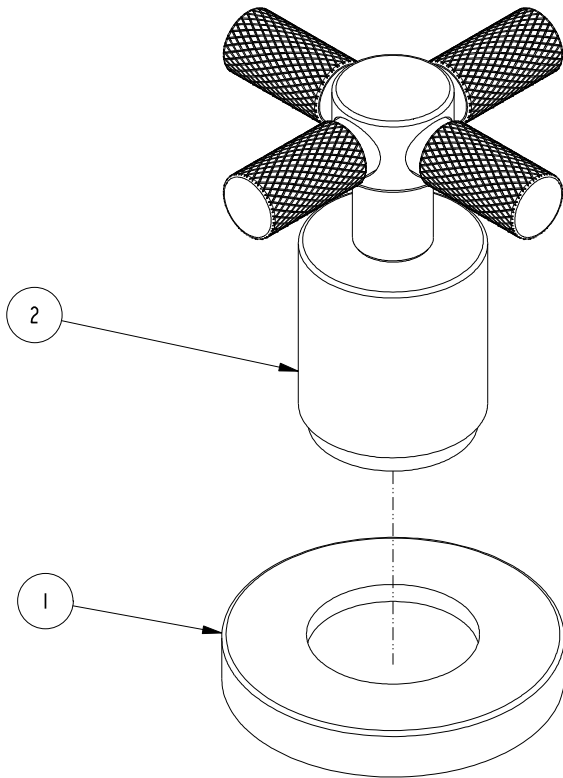


NOTES:

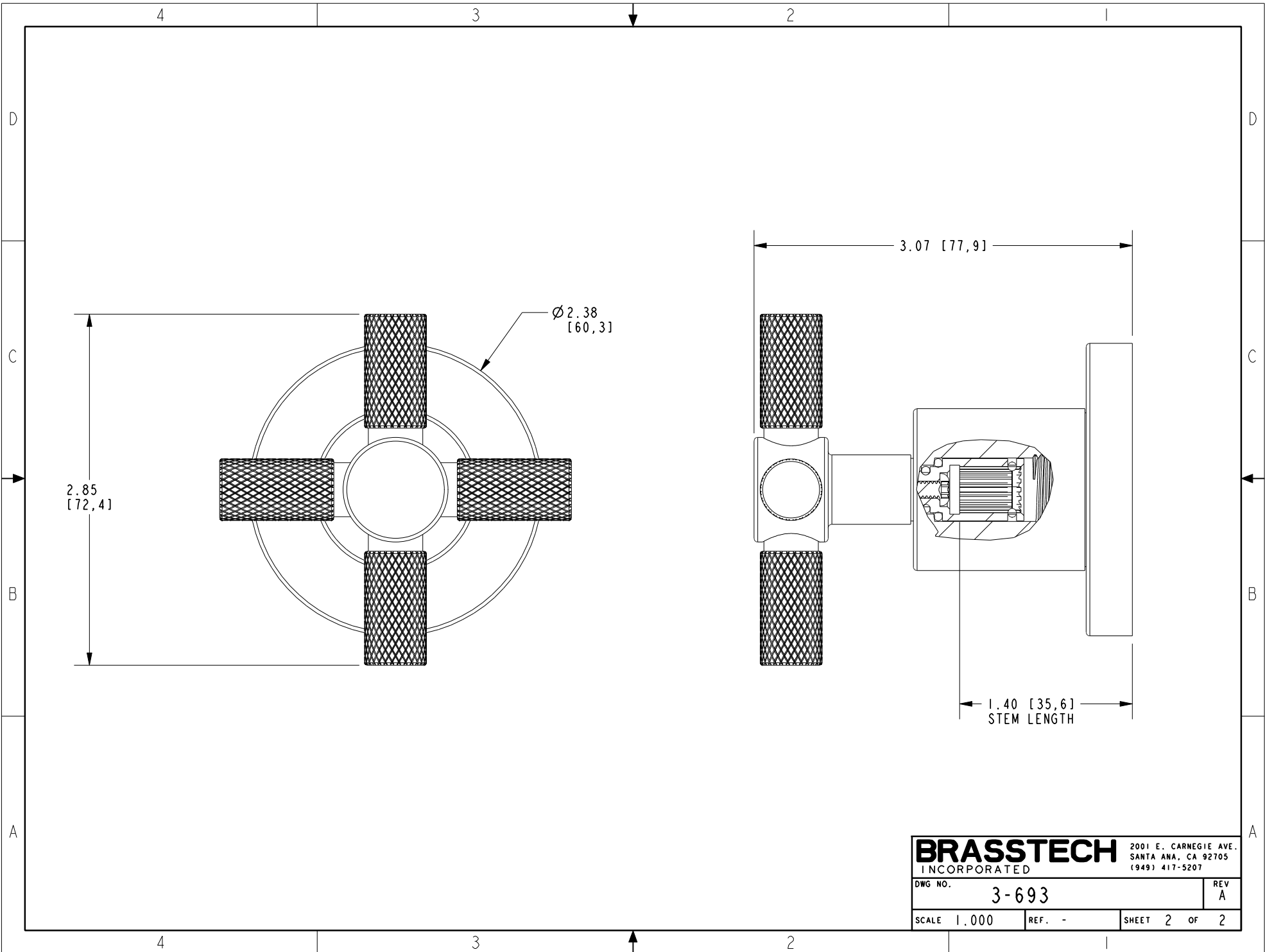
- (N1) 1. TO INSPECT ASSEMBLY, FOLLOW FIRST ARTICLE AND IN PROCESS INSPECTION SHEET.

BILL OF MATERIAL (CURRENT LEVEL)

ITEM	PT/ASSY	DESCRIPTION	TYPE	QTY.
1	20-527	ESCUTCHEON ASM	ASSEMBLY	1
2	20-524	CROSS HANDLE ASM	ASSEMBLY	1



COPYRIGHT 2005 BRASSTECH, INC. THESE DRAWINGS AND THE DESIGNS DEPICTED HEREIN ARE THE PROPRIETARY PROPERTY OF BRASSTECH. ANY USE OR REPRODUCTION IS SUBJECT TO THE EXPRESS APPROVAL OF BRASSTECH. UNAUTHORIZED USE IS STRICTLY PROHIBITED. ALL RIGHTS RESERVED.					TESTING	-	-	-	UNITS ARE: INCHES [MM] TOLERANCES ARE: FRACTIONS DECIMALS ANGLES ±1/16" .X ±.1 [2.5] ±1° .XX ±.06 [1.5]	BRASSTECH INCORPORATED 2001 CARNEGIE AVE. SANTA ANA, CA 92705 (949) 417-5207				
-	A	EN-4115a	11/15/21	R. S.	ASSEMBLY	-	-	-	(X.XXX) DENOTES CRITICAL DIMS. ALL THREADS ARE CRITICAL					
-	-	EN-4115	03/27/20	J. M.	PLATING	-	3300	3300	DRAWN	JIMSON	03/27/20	CROSS HANDLE W/ESC. DWG NO. 3-693 REV A		
ZONE	REV	DESCRIPTION	DATE	APPROVED	POLISHING	-	NEXT ASSY	USED ON	CHECKED	J. M.	03/27/20			
					MACHINING	-	APPLICATION		APPROVED	J. M.	03/27/20	SCALE .750	REF. -	SHEET 1 OF 2
					TOOLING FIXTURE #	REMOVE ALL BURRS AND SHARP EDGES								



BRASSTECH		2001 E. CARNEGIE AVE. SANTA ANA, CA 92705 (949) 417-5207	
DWG NO.	3-693	REV	A
SCALE	1.000	REF.	-
		SHEET	2 OF 2