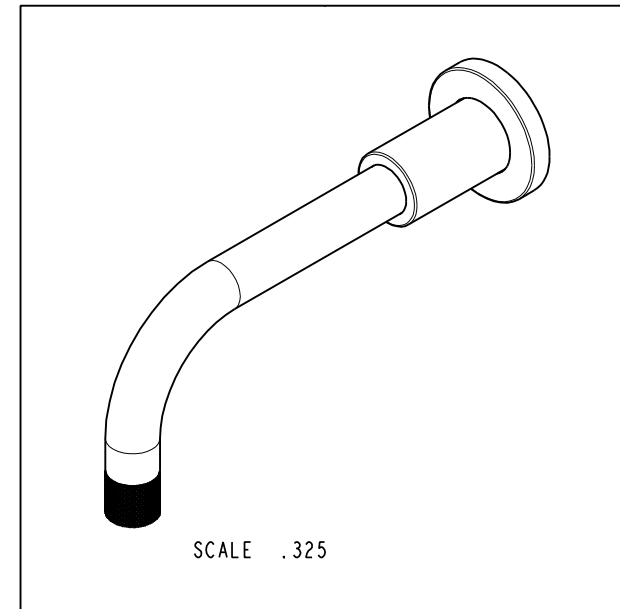


NOTES:

- (NI) 1. FIT / FORM / FUNCTION SHALL FOLLOW PS-E.008.

BILL OF MATERIAL (CURRENT LEVEL)

ITEM	PT/ASSY	DESCRIPTION	TYPE	QTY.
1	20-533	W/M SPOUT	ASSEMBLY	1
2	13415	W/M SPOUT BASE	PART	1
3	91764	O-RING, #2-027, EP, 50 DURO - GREY	PART	1
4	91753	O-RING, # 2-136, EP, 50 DURO - GREY	PART	1
5	1-368	WALL MOUNT SPOUT ADAPTOR ASM	ASSEMBLY	1
6	20-534	AERATOR ASM	ASSEMBLY	1



COPYRIGHT 2005 BRASSTECH, INC.
THESE DRAWINGS AND THE DESIGNS
DEPICTED HEREIN ARE THE PROPRIETARY
PROPERTY OF BRASSTECH. ANY USE
OR REPRODUCTION IS SUBJECT TO
THE EXPRESS APPROVAL OF BRASSTECH.
UNAUTHORIZED USE IS STRICTLY
PROHIBITED. ALL RIGHTS RESERVED.

		-	-
TESTING	-	-	-
ASSEMBLY	-	-	-
PLATING	-	3-3295, 3-3305	3-3295, 3-3305
POLISHING	-	NEXT ASSY	USED ON
MACHINING	-	APPLICATION	
TOOLING FIXTURE #		REMOVE ALL BURRS AND SHARP EDGES	

UNITS ARE: INCHES [MM]		
TOLERANCES ARE:		
FRACTIONS	DECIMALS	ANGLES
±1/16"	.X ±.1 [2.5]	±1°
	.XX ±.06 [1.5]	
(X.XXX) DENOTES CRITICAL DIMS.		
ALL THREADS ARE CRITICAL		
DRAWN	JINSON	05/11/20
CHECKED	J.M.	05/11/20
APPROVED	J.M.	05/11/20

BRASSTECH 2001 CARNEGIE AVE.
INCORPORATED SANTA ANA, CA 92705
(949) 417-5207

W/M TUB SPOUT W/ESC.

DWG NO.	3-695	REV	-
SCALE	.375	REF.	-
SHEET	1	OF	1

ZONE	REV	DESCRIPTION	DATE	APPROVED
-	-	EN-4115	05/11/20	J.M.