

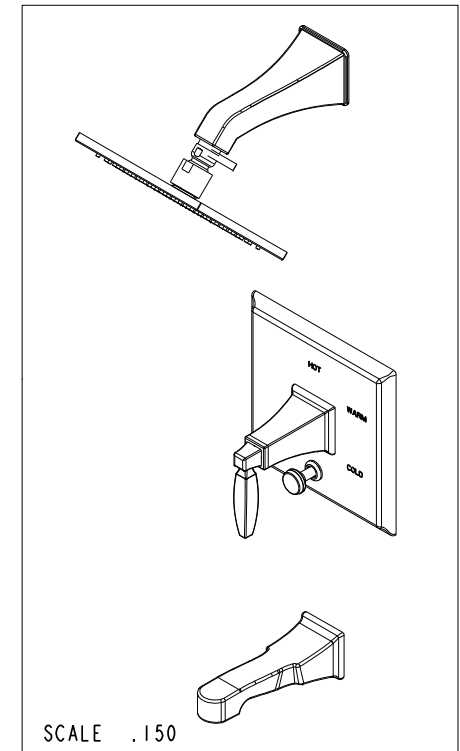
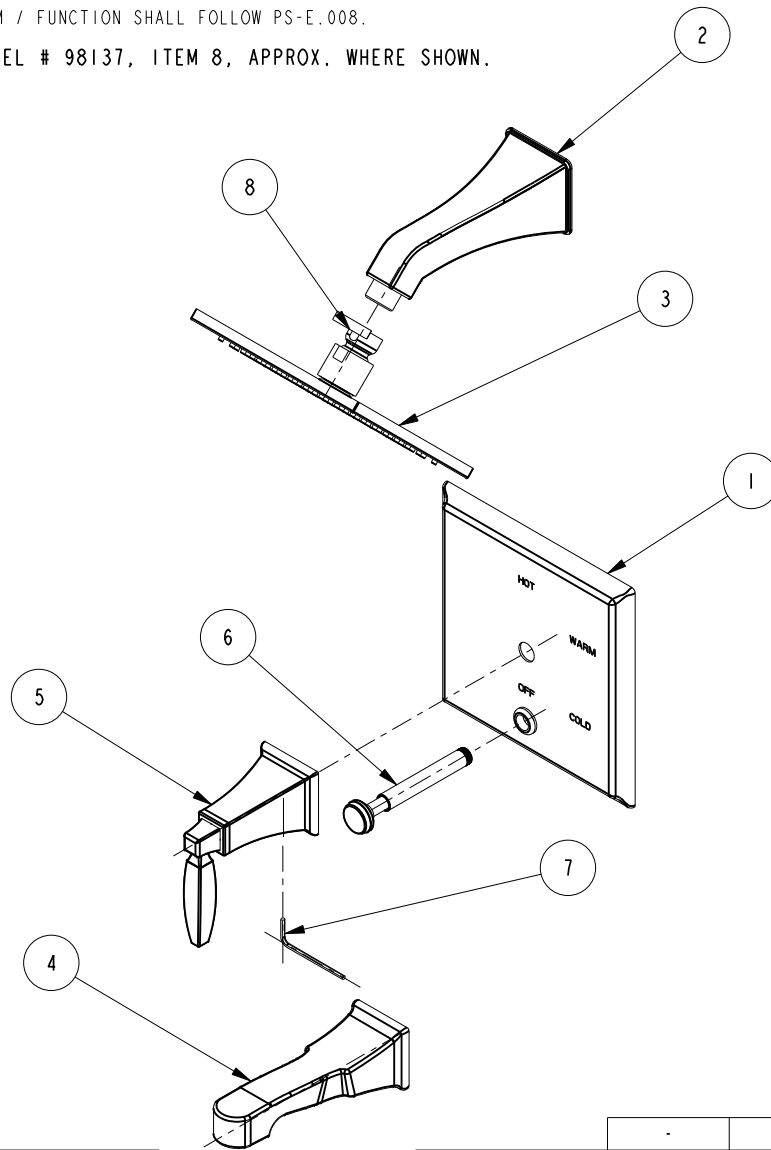
NOTES:

(N1) 1. FIT / FORM / FUNCTION SHALL FOLLOW PS-E.008.

2 AFFIX LABEL # 98137, ITEM 8, APPROX. WHERE SHOWN.

BILL OF MATERIAL (CURRENT LEVEL)

ITEM	PT/ASSY	DESCRIPTION	TYPE	QTY.
1	20-269	SHOWER PLATE ASM	ASSEMBLY	1
2	12312	SHOWER ARM	PART	1
3	3-504	SHOWER HEAD ASM	ASSEMBLY	1
4	3-503	SPOUT ASM	ASSEMBLY	1
5	3-502	HANDLE ASM	ASSEMBLY	1
6	2-217	DIVERTER TRIM KIT	ASSEMBLY	1
7	CCQT0002	HEX KEY	PART	1
8	98137	STICKER LABEL A112.18.1	PART	1



-	D	EN-3965	09/25/19	V.V.
-	C	EN-3770	12/18/18	NS
-	B	EN-3260	02/16/17	NS
-	A	EN-2889	05/11/15	H. LE
-	-	EN-2741	08/27/14	H. LE
ZONE	REV	DESCRIPTION	DATE	APPROVED

COPYRIGHT 2005 BRASSTECH, INC. THESE DRAWINGS AND THE DESIGNS DEPICTED HEREIN ARE THE PROPRIETARY PROPERTY OF BRASSTECH. ANY USE OR REPRODUCTION IS SUBJECT TO THE EXPRESS APPROVAL OF BRASSTECH. UNAUTHORIZED USE IS STRICTLY PROHIBITED. ALL RIGHTS RESERVED.

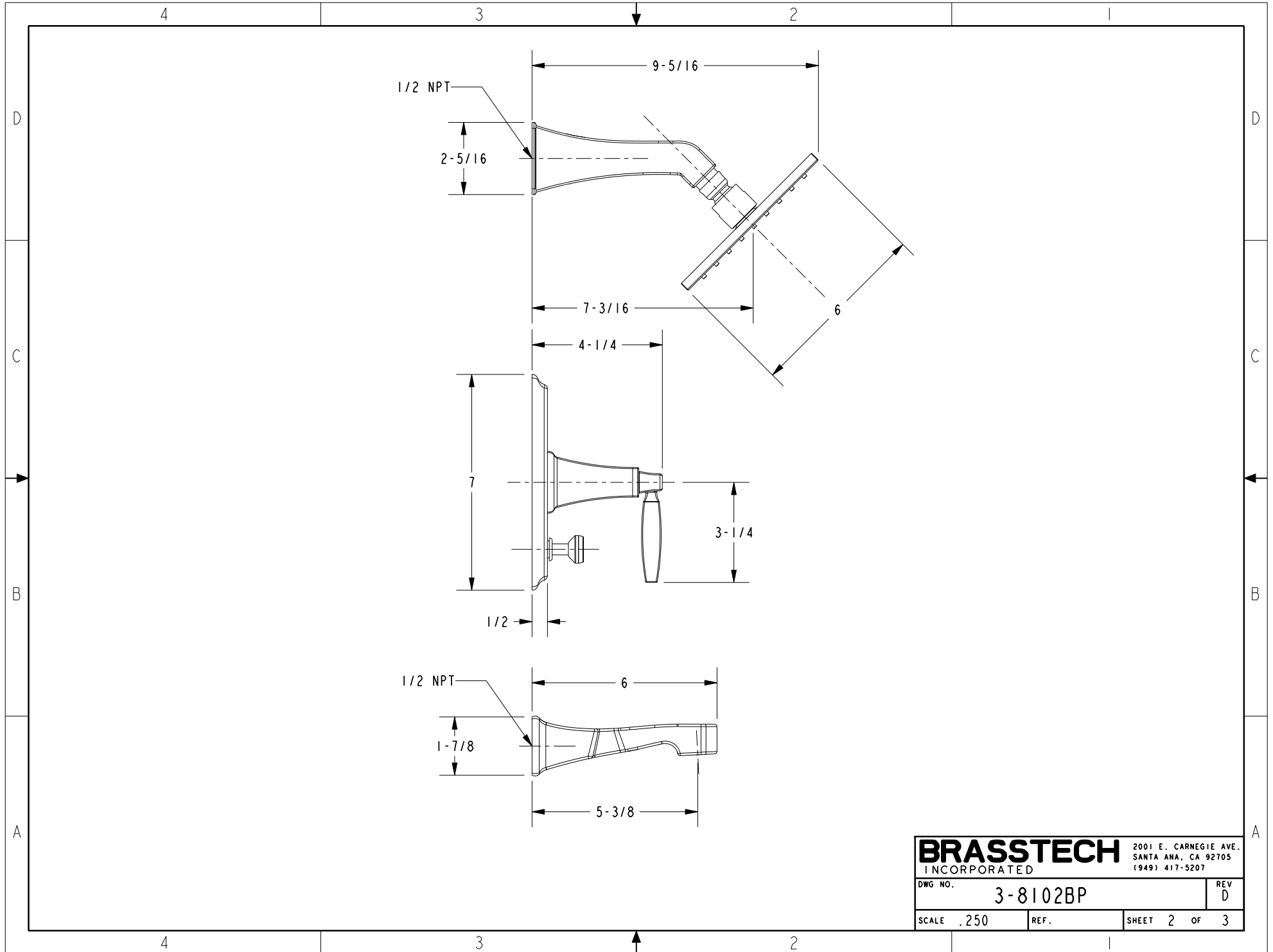
TESTING	-	-	-
ASSEMBLY	-	-	-
PLATING	-		
POLISHING	-	NEXT ASSY	USED ON
MACHINING	-	APPLICATION	
TOOLING FIXTURE #	-	REMOVE ALL BURRS AND SHARP EDGES	

UNITS ARE: INCHES [MM]	
TOLERANCES ARE:	
FRACTIONS DECIMALS	ANGLES
$\pm 1/16"$	$\pm 1^\circ$
.X $\pm .1$ [2.5]	
.XX $\pm .06$ [1.5]	
(X.XXX) DENOTES CRITICAL DIMS. ALL THREADS ARE CRITICAL	
DRAWN	RAVINDRA 08/27/14
CHECKED	JINSON 08/27/14
APPROVED	H. LE 08/27/14

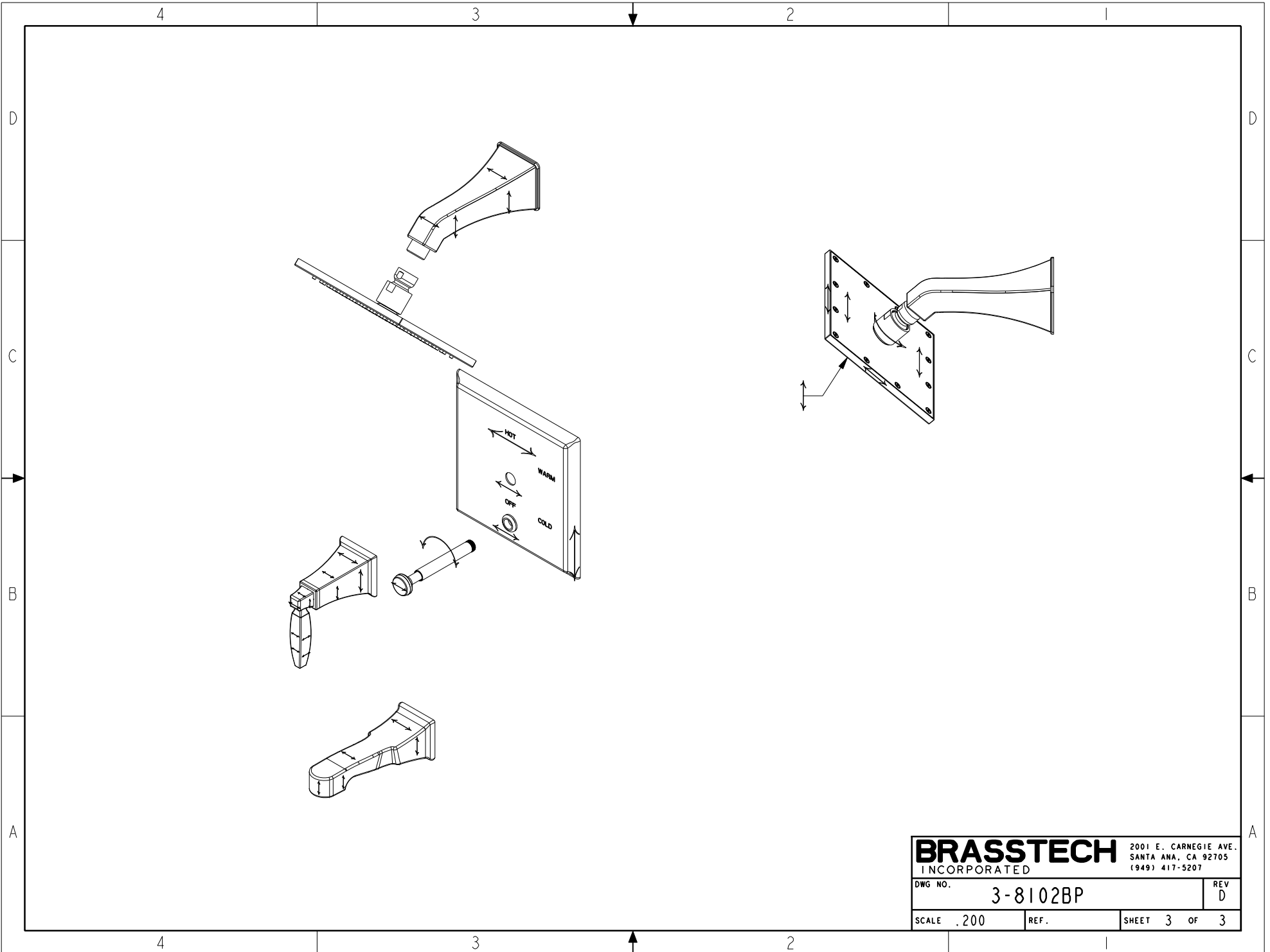
BRASSTECH 2001 CARNEGIE AVE. SANTA ANA, CA 92705 (949) 417-5207
INCORPORATED

BP TUB & SHOWER TRIM SET

DWG NO.	3-8102BP	REV	D
SCALE	.200	REF.	SHEET 1 OF 3



BRASSTECH		2001 E. CARNEGIE AVE.	
INCORPORATED		SANTA ANA, CA 92705	
DWG NO. 3-8102BP		REV D	
SCALE .250	REF.	SHEET 2 OF 3	



BRASSTECH		2001 E. CARNEGIE AVE.	
INCORPORATED		SANTA ANA, CA 92705	
DWG NO.		REV	
3-8102BP		D	
SCALE .200	REF.	SHEET 3	OF 3