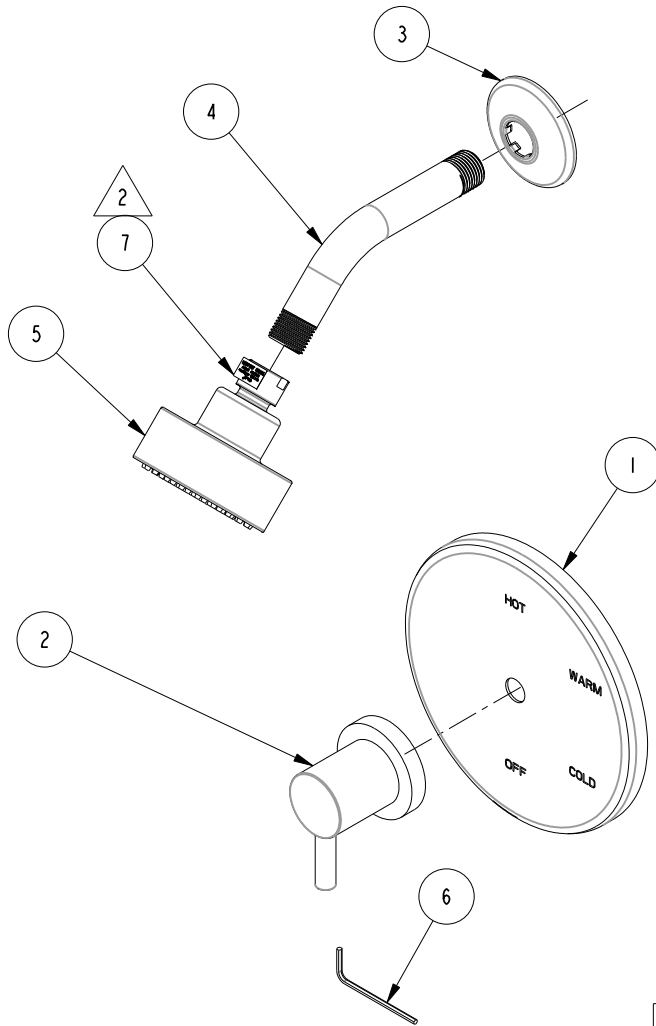


NOTES:

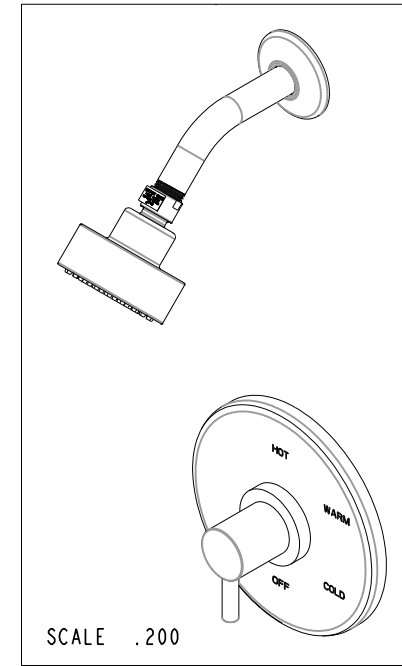
(NI) 1. FIT / FORM / FUNCTION SHALL FOLLOW PS-E.008.

2 AFFIX LABEL # 98137, ITEM 7, APPROX. WHERE SHOWN.



BILL OF MATERIAL (CURRENT LEVEL)

ITEM	PT/ASSY	DESCRIPTION	TYPE	QTY.
1	20-272	SHOWER PLATE ASM	ASSEMBLY	1
2	3-535	HANDLE ASM	ASSEMBLY	1
3	12308	COVER	PART	1
4	12309	SHOWER ARM	PART	1
5	3-507	SHOWER HEAD ASM	ASSEMBLY	1
6	CCQT0002	HEX KEY	PART	1
7	98137	LABEL	PART	1



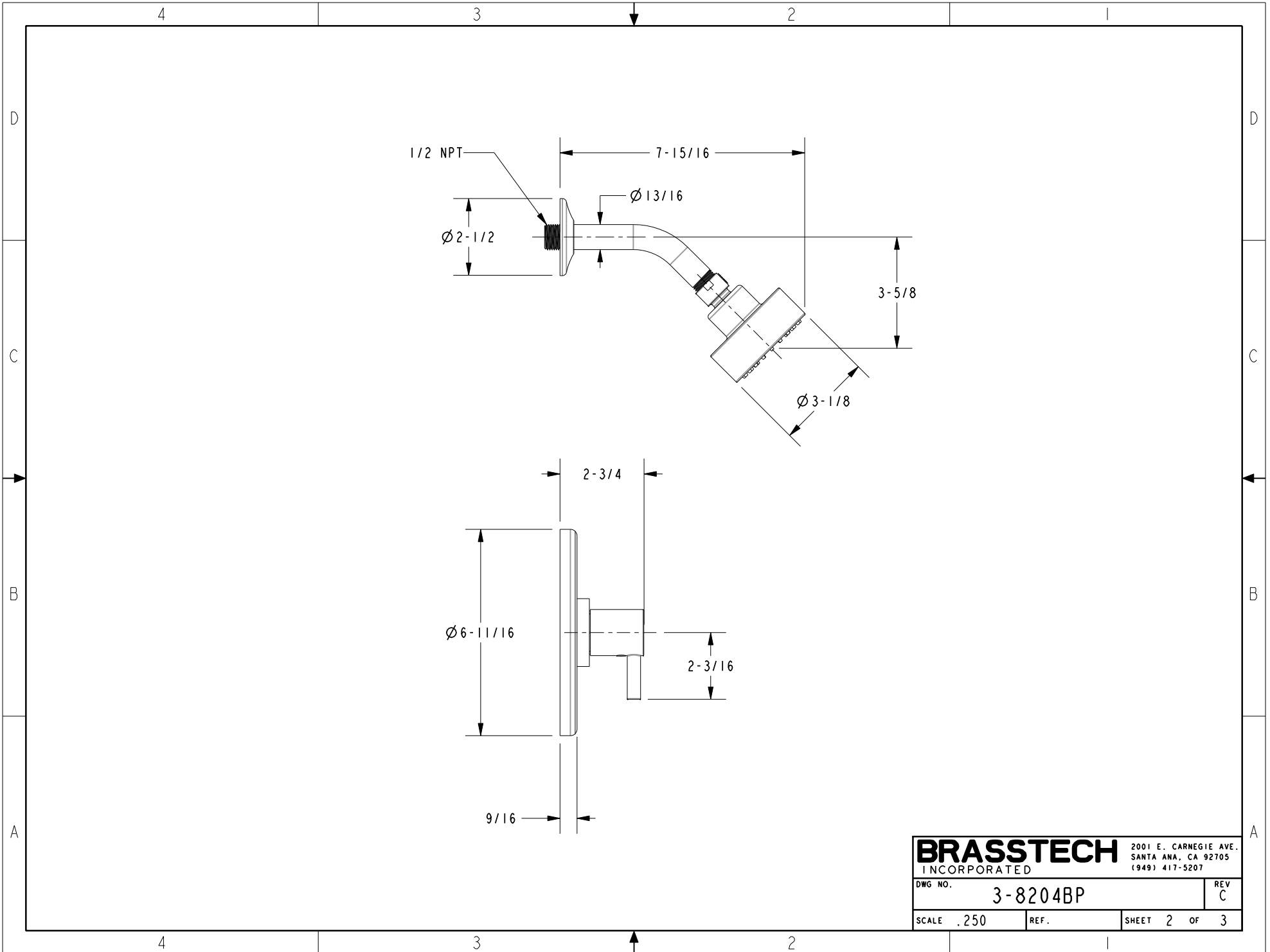
ZONE	REV	DESCRIPTION	DATE	APPROVED
-	C	EN-3770	12/18/18	NS
-	B	EN-3260	02/13/17	NS
-	A	EN-2889	05/11/15	V. VU
-	-	EN-2741	08/27/14	V. VU

COPYRIGHT 2005 BRASSTECH, INC. THESE DRAWINGS AND THE DESIGNS DEPICTED HEREIN ARE THE PROPRIETARY PROPERTY OF BRASSTECH. ANY USE OR REPRODUCTION IS SUBJECT TO THE EXPRESS APPROVAL OF BRASSTECH. UNAUTHORIZED USE IS STRICTLY PROHIBITED. ALL RIGHTS RESERVED.

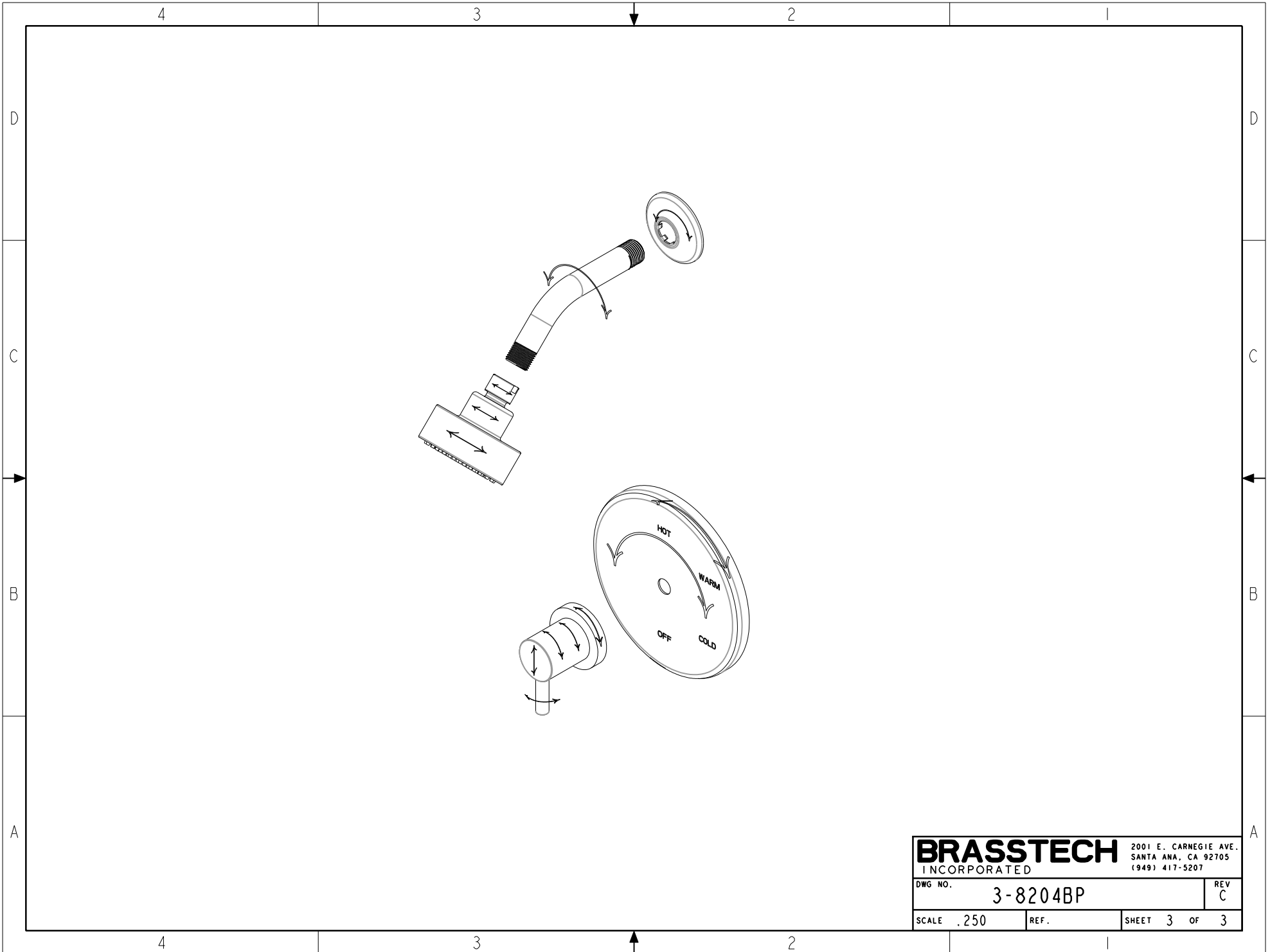
TESTING	-	-	-
ASSEMBLY	-	-	-
PLATING	-	-	-
POLISHING	-	NEXT ASSY	USED ON
MACHINING	-	APPLICATION	
TOOLING FIXTURE #	REMOVE ALL BURRS AND SHARP EDGES		

UNITS ARE: INCHES [MM]	
TOLERANCES ARE:	
FRACTIONS DECIMALS	ANGLES
$\pm 1/16"$	$\pm 1^\circ$
.X \pm .1 [2.5]	
.XX \pm .06 [1.5]	
(X.XXX) DENOTES CRITICAL DIMS. ALL THREADS ARE CRITICAL	
DRAWN	H. LE 08/27/14
CHECKED	V. VU 08/27/14
APPROVED	V. VU 08/27/14

BRASSTECH		2001 CARNEGIE AVE. SANTA ANA, CA 92705 (949) 417-5207	
INCORPORATED			
BP SHOWER TRIM SET			
DWG NO.	3-8204BP		REV C
SCALE .250	REF.	SHEET 1	OF 3



BRASSTECH		2001 E. CARNEGIE AVE.	
INCORPORATED		SANTA ANA, CA 92705	
		(949) 417-5207	
DWG NO.	3-8204BP		REV
			C
SCALE .250	REF.	SHEET 2 OF 3	



BRASSTECH		2001 E. CARNEGIE AVE.	
INCORPORATED		SANTA ANA, CA 92705	
		(949) 417-5207	
DWG NO.	3-8204BP		REV C
SCALE .250	REF.	SHEET 3 OF 3	