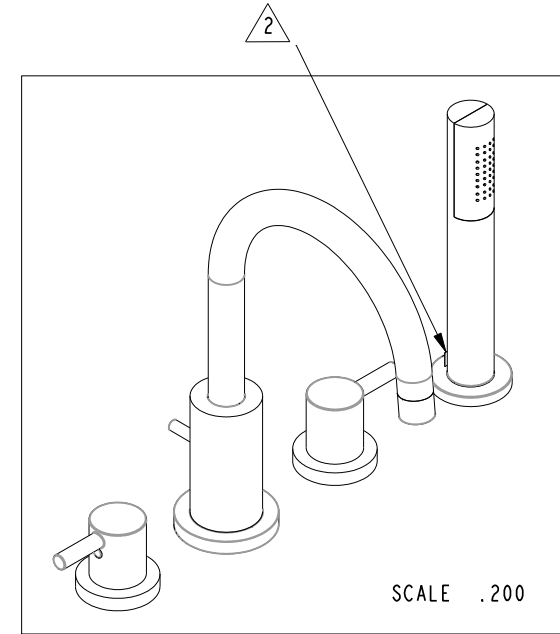
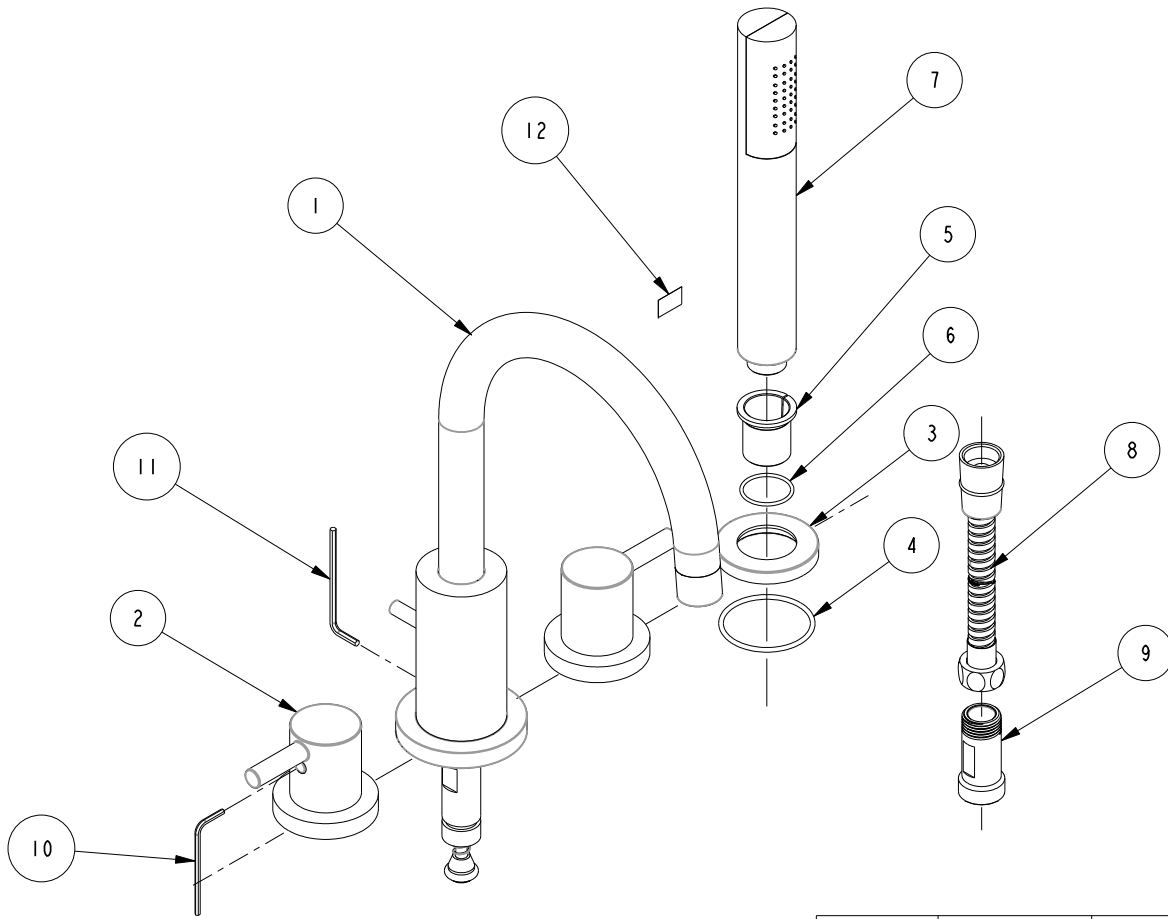


NOTES:

- (N1) 1. FIT / FORM / FUNCTION SHALL FOLLOW PS-E.008.
 2 AFFIX LABEL 98137, ITEM 12, ON THE HAND SHOWER, CENTERED, APPROX. WHERE SHOWN.

BILL OF MATERIAL (CURRENT LEVEL)				
ITEM	PT/ASSY	DESCRIPTION	TYPE	QTY.
1	3-492	SPOUT ASM	ASSEMBLY	1
2	3-493	HANDLE ASM	ASSEMBLY	2
3	12337	FLANGE	PART	1
4	4625	O-RING	PART	1
5	91548	INSERT	PART	1
6	91024	O-RING, #2- 022, EPDM, 65-75 DURO	PART	1
7	12388	HAND SHOWER	ASSEMBLY	1
8	284-	HOSE	ASSEMBLY	1
9	20-102	ADAPTER ASM	ASSEMBLY	1
10	CCOT0002	HEX KEY	PART	1
11	CCOTXXX1	HEX KEY	PART	1
12	98137	LABEL	PART	1



ZONE	REV	DESCRIPTION	DATE	APPROVED
-	C	EN-3770	12/18/18	NS
-	B	EN-3260	03/13/17	NS
-	A	EN-2944	09/08/15	V. VU
-	-	EN-2741	08/27/14	V. VU

COPYRIGHT 2005 BRASSTECH, INC. THESE DRAWINGS AND THE DESIGNS DEPICTED HEREIN ARE THE PROPRIETARY PROPERTY OF BRASSTECH. ANY USE OR REPRODUCTION IS SUBJECT TO THE EXPRESS APPROVAL OF BRASSTECH. UNAUTHORIZED USE IS STRICTLY PROHIBITED. ALL RIGHTS RESERVED.

TESTING	-	-	-
ASSEMBLY	-	-	-
PLATING	-	-	-
POLISHING	-	NEXT ASSY	USED ON
MACHINING	-	APPLICATION	
TOOLING FIXTURE #	REMOVE ALL BURRS AND SHARP EDGES		

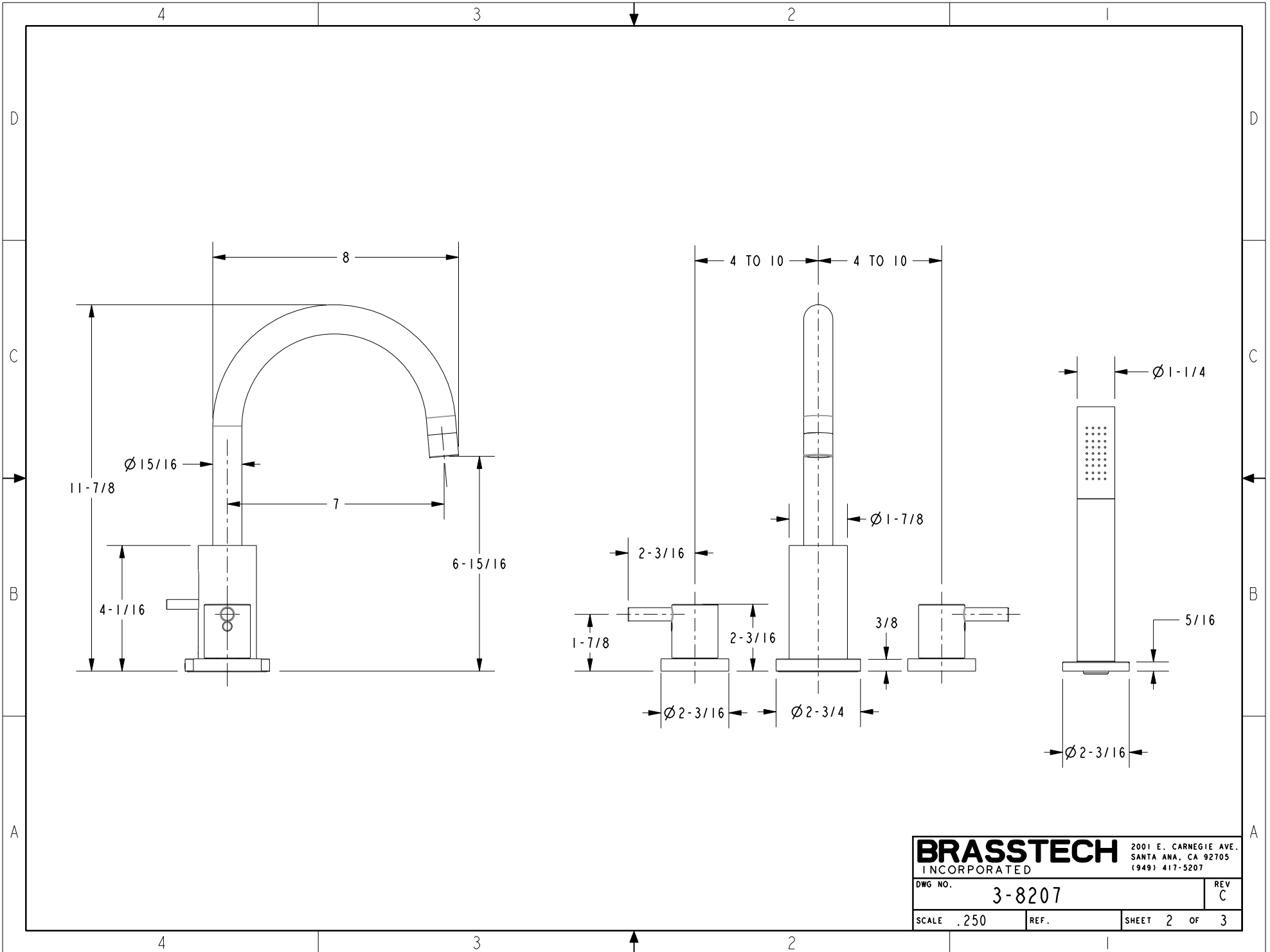
UNITS ARE: INCHES [MM]	
TOLERANCES ARE:	
FRACTIONS DECIMALS	ANGLES
±1/16"	.1 ±.1 [2.5] ±1°
	.xx ±.06 [1.5]
(X.XXX) DENOTES CRITICAL DIMS. ALL THREADS ARE CRITICAL	
DRAWN	H. LE 08/27/14
CHECKED	V. VU 08/27/14
APPROVED	V.VU 08/27/14

BRASSTECH 2001 CARNEGIE AVE. SANTA ANA, CA 92705 (949) 417-5207
 INCORPORATED

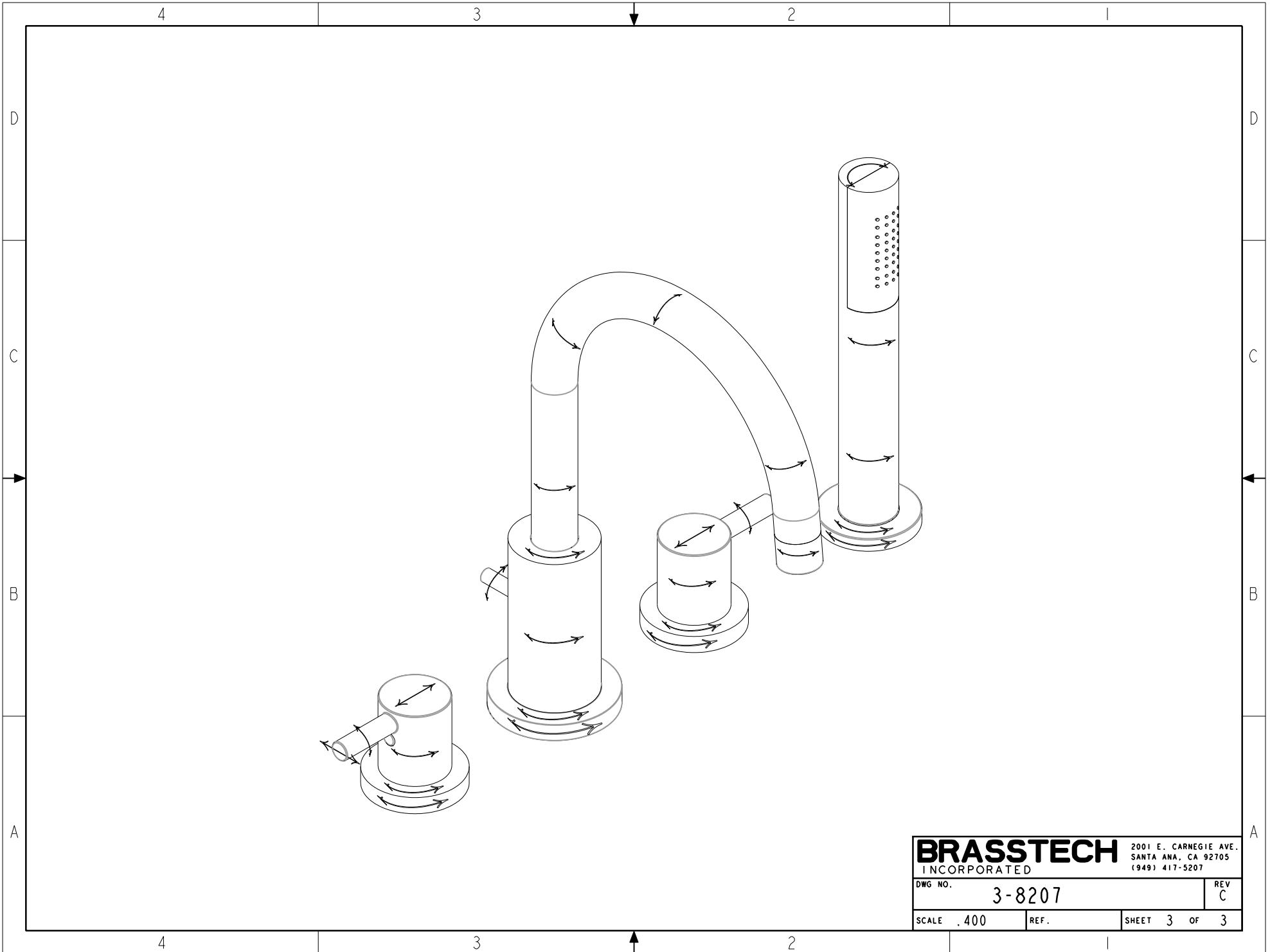
ROMAN TUB SET

DWG NO. 3-8207 REV C

SCALE .250 REF. SHEET 1 OF 3



BRASSTECH		2001 E. CARNEGIE AVE.	
INCORPORATED		SANTA ANA, CA 92705	
		(949) 417-5207	
DWG NO.	3-8207		REV C
SCALE .250	REF.	SHEET 2 OF 3	



BRASSTECH		2001 E. CARNEGIE AVE.	
INCORPORATED		SANTA ANA, CA 92705	
		(949) 417-5207	
DWG NO.	3-8207	REV	C
SCALE .400	REF.	SHEET 3	OF 3