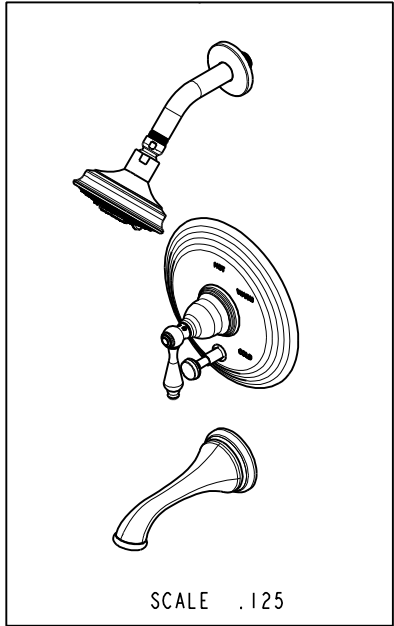


4	3	2	1																																								
<p>NOTES:</p> <p>1. TO INSPECT ASSEMBLY, FOLLOW FIRST ARTICLE AND IN PROCESS INSPECTION SHEET.</p>		<p><b>BILL OF MATERIAL (CURRENT LEVEL)</b></p> <table border="1" style="width:100%; border-collapse: collapse;"> <thead> <tr> <th>ITEM</th> <th>PT/ASSY</th> <th>DESCRIPTION</th> <th>TYPE</th> <th>QTY.</th> </tr> </thead> <tbody> <tr> <td>1</td> <td>2-217</td> <td>DIVERTER TRIM KIT</td> <td>ASSEMBLY</td> <td>1</td> </tr> <tr> <td>2</td> <td>2-224</td> <td>COVERPLATE BP W/DIVERTER</td> <td>ASSEMBLY</td> <td>1</td> </tr> <tr> <td>3</td> <td>3-202</td> <td>TRIM KIT - STOP VALVE</td> <td>ASSEMBLY</td> <td>1</td> </tr> <tr> <td>4</td> <td>200</td> <td>SHOWER ARM 6" BRASS</td> <td>PART</td> <td>1</td> </tr> <tr> <td>5</td> <td>206</td> <td>SHOWER ARM FLANGE</td> <td>PART</td> <td>1</td> </tr> <tr> <td>6</td> <td>2156</td> <td>SHOWER HEAD, TRAD</td> <td>ASSEMBLY</td> <td>1</td> </tr> <tr> <td>7</td> <td>2201</td> <td>COLONIAL TUB SPOUT</td> <td>ASSEMBLY</td> <td>1</td> </tr> </tbody> </table>		ITEM	PT/ASSY	DESCRIPTION	TYPE	QTY.	1	2-217	DIVERTER TRIM KIT	ASSEMBLY	1	2	2-224	COVERPLATE BP W/DIVERTER	ASSEMBLY	1	3	3-202	TRIM KIT - STOP VALVE	ASSEMBLY	1	4	200	SHOWER ARM 6" BRASS	PART	1	5	206	SHOWER ARM FLANGE	PART	1	6	2156	SHOWER HEAD, TRAD	ASSEMBLY	1	7	2201	COLONIAL TUB SPOUT	ASSEMBLY	1
ITEM	PT/ASSY	DESCRIPTION	TYPE	QTY.																																							
1	2-217	DIVERTER TRIM KIT	ASSEMBLY	1																																							
2	2-224	COVERPLATE BP W/DIVERTER	ASSEMBLY	1																																							
3	3-202	TRIM KIT - STOP VALVE	ASSEMBLY	1																																							
4	200	SHOWER ARM 6" BRASS	PART	1																																							
5	206	SHOWER ARM FLANGE	PART	1																																							
6	2156	SHOWER HEAD, TRAD	ASSEMBLY	1																																							
7	2201	COLONIAL TUB SPOUT	ASSEMBLY	1																																							
4	3	2	1																																								



-	E	EN-4300e	04/28/21	R.S.
-	D	EN-2802	09/05/14	-
-	C	EN-1745	08/22/11	-
-	B	EN-1183	03/23/09	-
-	A	EO-0224	07/01/03	-
ZONE	REV	DESCRIPTION	DATE	APPROVED

COPYRIGHT 2005 BRASSTECH, INC. THESE DRAWINGS AND THE DESIGNS DEPICTED HEREIN ARE THE PROPRIETARY PROPERTY OF BRASSTECH. ANY USE OR REPRODUCTION IS SUBJECT TO THE EXPRESS APPROVAL OF BRASSTECH. UNAUTHORIZED USE IS STRICTLY PROHIBITED. ALL RIGHTS RESERVED.

TESTING	-	-	-
ASSEMBLY	-	-	-
PLATING	-	-	-
POLISHING	-	NEXT ASSY	USED ON
MACHINING	-	APPLICATION	
TOOLING FIXTURE #	REMOVE ALL BURRS AND SHARP EDGES		

UNITS ARE: INCHES [MM]  
TOLERANCES ARE:  
FRACTIONS DECIMALS ANGLES  
 $\pm 1/16"$   $.x \pm .1$  [2.5]  $\pm 1^\circ$   
 $.xx \pm .06$  [1.5]

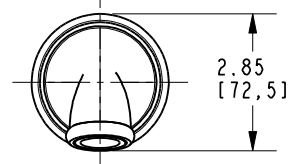
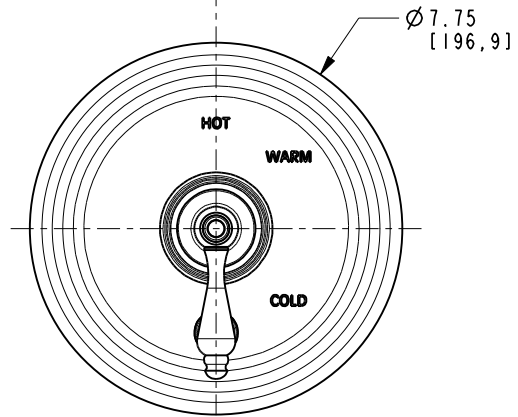
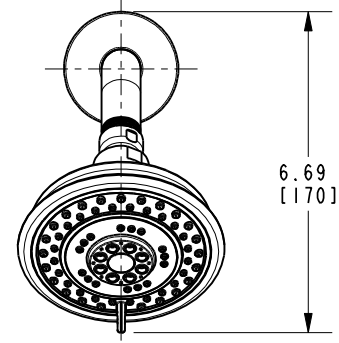
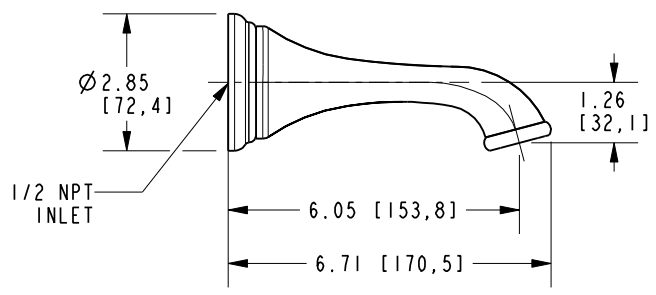
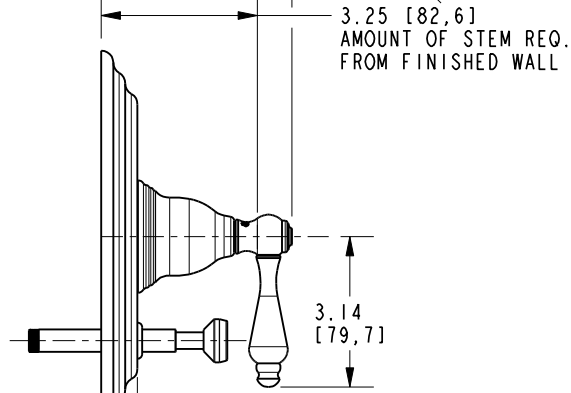
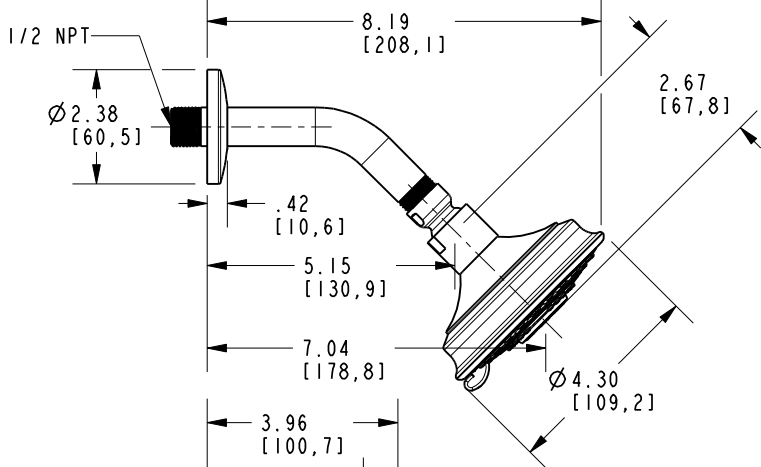
(X.XXX) DENOTES CRITICAL DIMS.  
ALL THREADS ARE CRITICAL

DRAWN	JINSON	04/28/21
CHECKED	R.S.	04/28/21
APPROVED	R.S.	04/28/21

**BRASSTECH** 2001 CARNEGIE AVE.  
INCORPORATED SANTA ANA, CA 92705  
(949) 417-5207

**TRIM KIT - BP TUB / SHOWER**

DWG NO. <b>3-852BP</b>	REV E
SCALE .250	SHEET 1 OF 2



<b>BRASSTECH</b>		2001 E. CARNEGIE AVE. SANTA ANA, CA 92705 (949) 417-5207	
DWG NO.	3-852BP	REV	E
SCALE	.250	REF.	-
SHEET 2		OF 2	