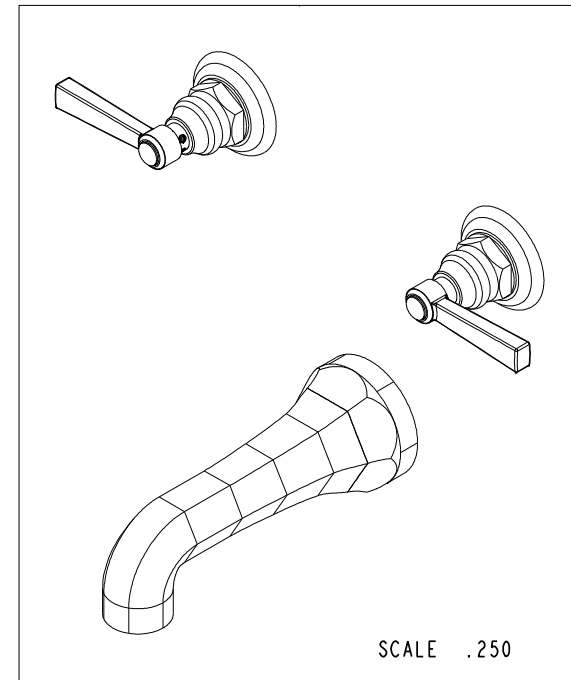
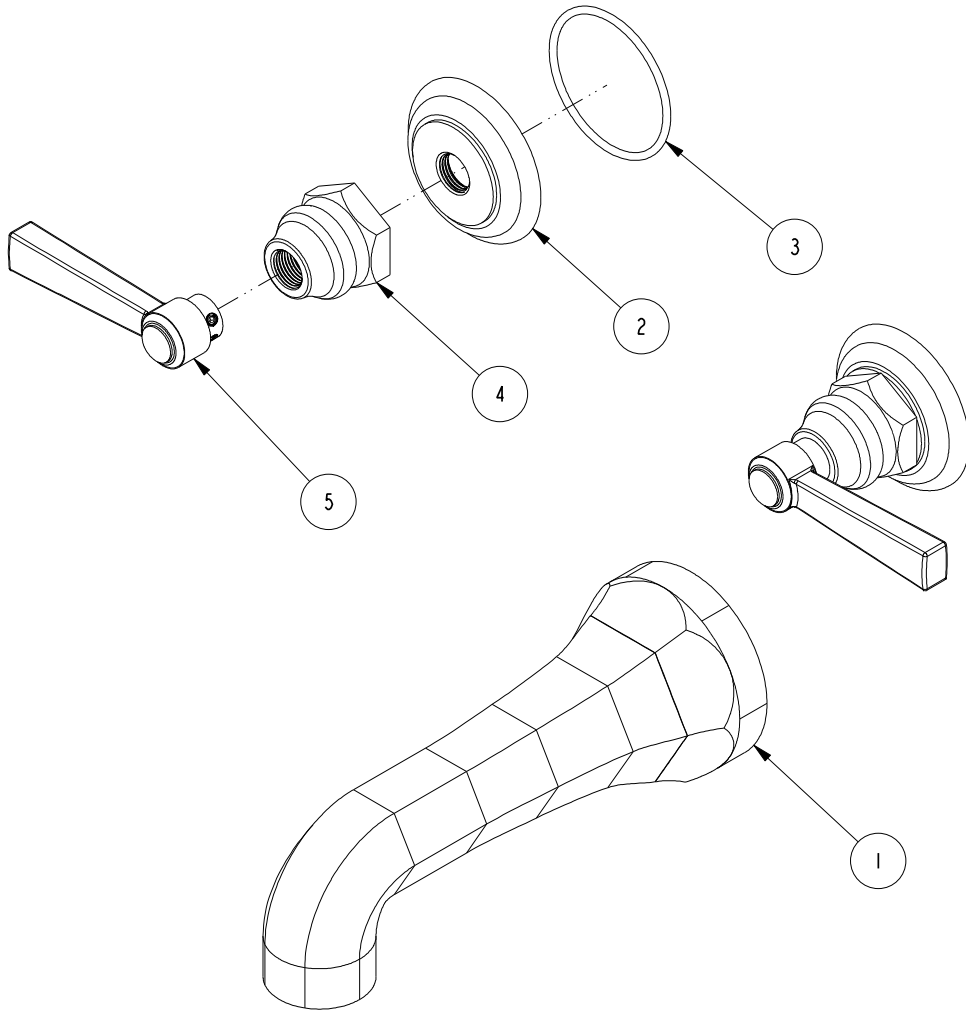


NOTES:

1. TO INSPECT ASSEMBLY, FOLLOW FIRST ARTICLE AND IN PROCESS INSPECTION SHEET.

**BILL OF MATERIAL (CURRENT LEVEL)**

ITEM	PT/ASSY	DESCRIPTION	TYPE	QTY.
1	2-144	WALL TUB SPOUT - HEX	ASSEMBLY	1
2	10050	ESCUTCHEON WALL VALVE	PART	2
3	91753	O-RING, # 2-136, EP, 50 DURO - GREY	PART	2
4	10523	HEX ESCUTCHEON BONNET	PART	2
5	2-436	LEVER HANDLE ASM	ASSEMBLY	2



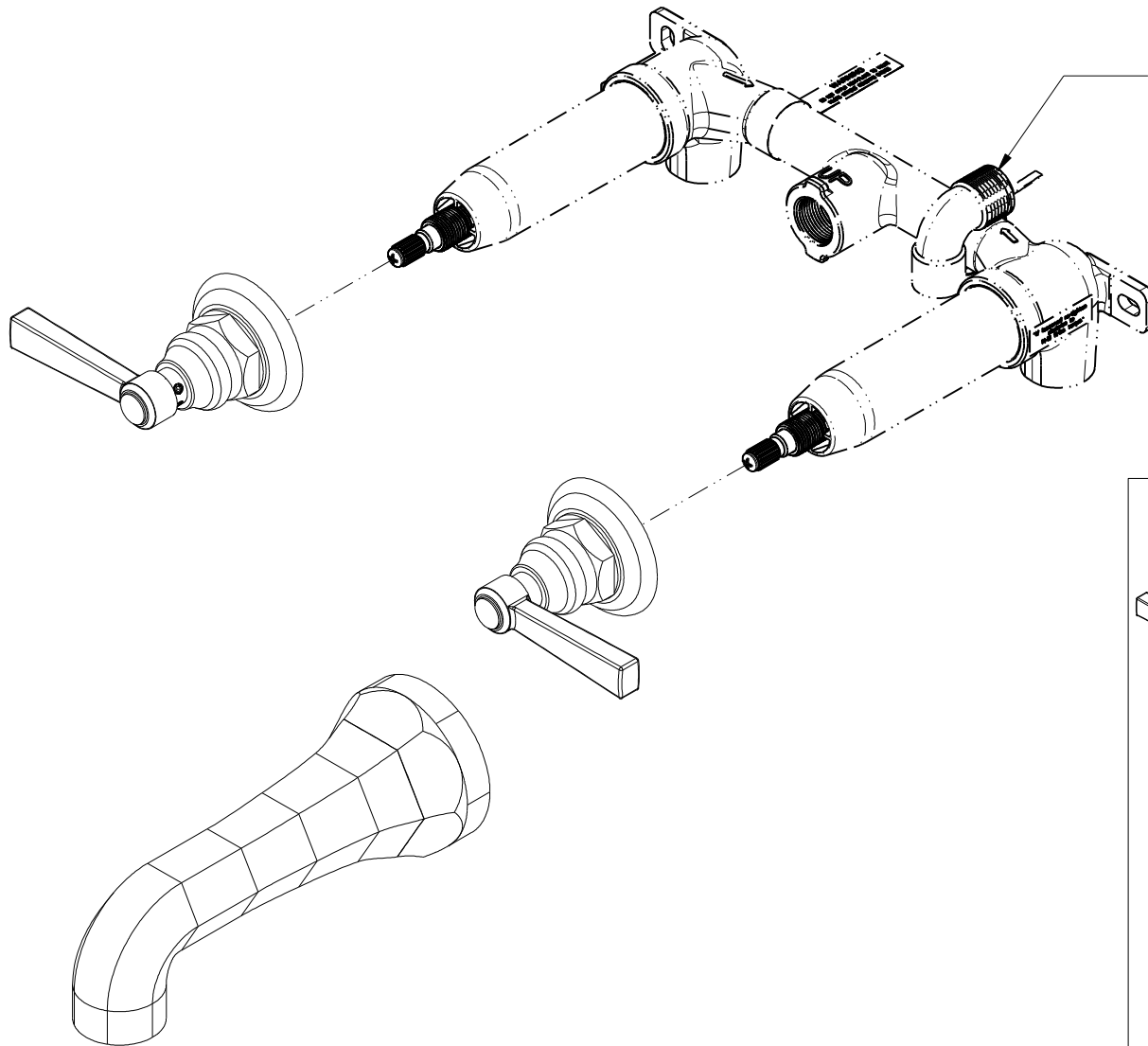
-	D	EN-3961-2	05/22/20	R.S.
-	C	EN-3722	02/08/19	C.G.
-	B	EN-2621B	02/28/13	-
-	A	EN-2677	02/03/14	-
-	-	EN-2621	11/21/13	-
ZONE	REV	DESCRIPTION	DATE	APPROVED

COPYRIGHT 2005 BRASSTECH, INC. THESE DRAWINGS AND THE DESIGNS DEPICTED HEREIN ARE THE PROPRIETARY PROPERTY OF BRASSTECH. ANY USE OR REPRODUCTION IS SUBJECT TO THE EXPRESS APPROVAL OF BRASSTECH. UNAUTHORIZED USE IS STRICTLY PROHIBITED. ALL RIGHTS RESERVED.

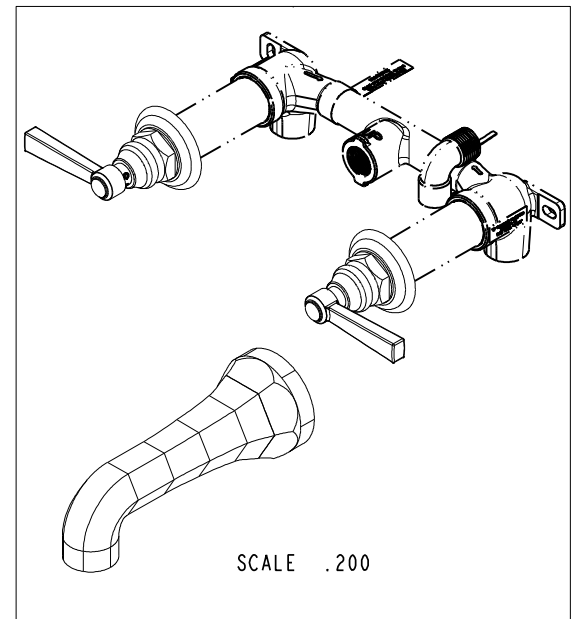
TESTING	-	-	-
ASSEMBLY	-	-	-
PLATING	-	-	-
POLISHING	-	NEXT ASSY	USED ON
MACHINING	-	APPLICATION	
TOOLING FIXTURE #	REMOVE ALL BURRS AND SHARP EDGES		

UNITS ARE: INCHES [MM]			
TOLERANCES ARE:			
FRACTIONS	DECIMALS	ANGLES	
±1/16"	.X ±.1 [2.5]	±1°	
	.XX ±.06 [1.5]		
(X.XXX) DENOTES CRITICAL DIMS. ALL THREADS ARE CRITICAL			
DRAWN	JINSON	05/22/20	
CHECKED	R.S.	05/22/20	
APPROVED	R.S.	05/22/20	

<b>BRASSTECH</b>		2001 CARNEGIE AVE. SANTA ANA, CA 92705 (949) 417-5207	
INCORPORATED			
WALL MOUNT TUB FAUCET			
DWG NO.		REV	
3-915		D	
SCALE	REF.	SHEET	OF
.400	-	1	3

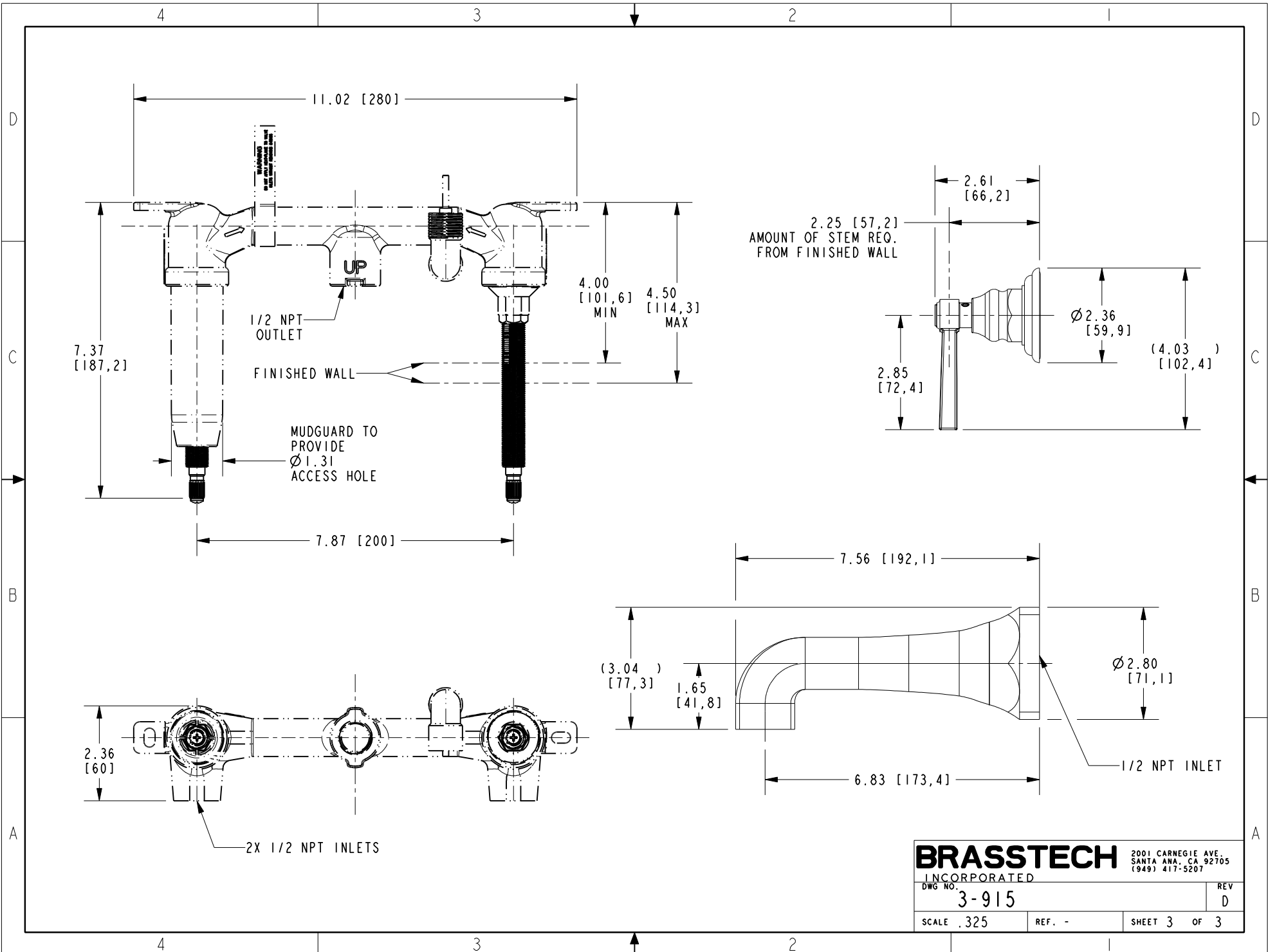


PN: 1-500U  
SOLD SEPARATELY



SCALE .200

<b>BRASSTECH</b>		2001 CARNEGIE AVE. SANTA ANA, CA 92705 (949) 417-5207	
INCORPORATED			
DWG NO.	3-915	REV	D
SCALE .350	REF. -	SHEET 2	OF 3



**BRASSTECH** 2001 CARNEGIE AVE.  
 INCORPORATED SANTA ANA, CA 92705  
 (949) 417-5207

DWG NO.	3-915	REV	D
SCALE	.325	REF.	-
SHEET 3		OF 3	