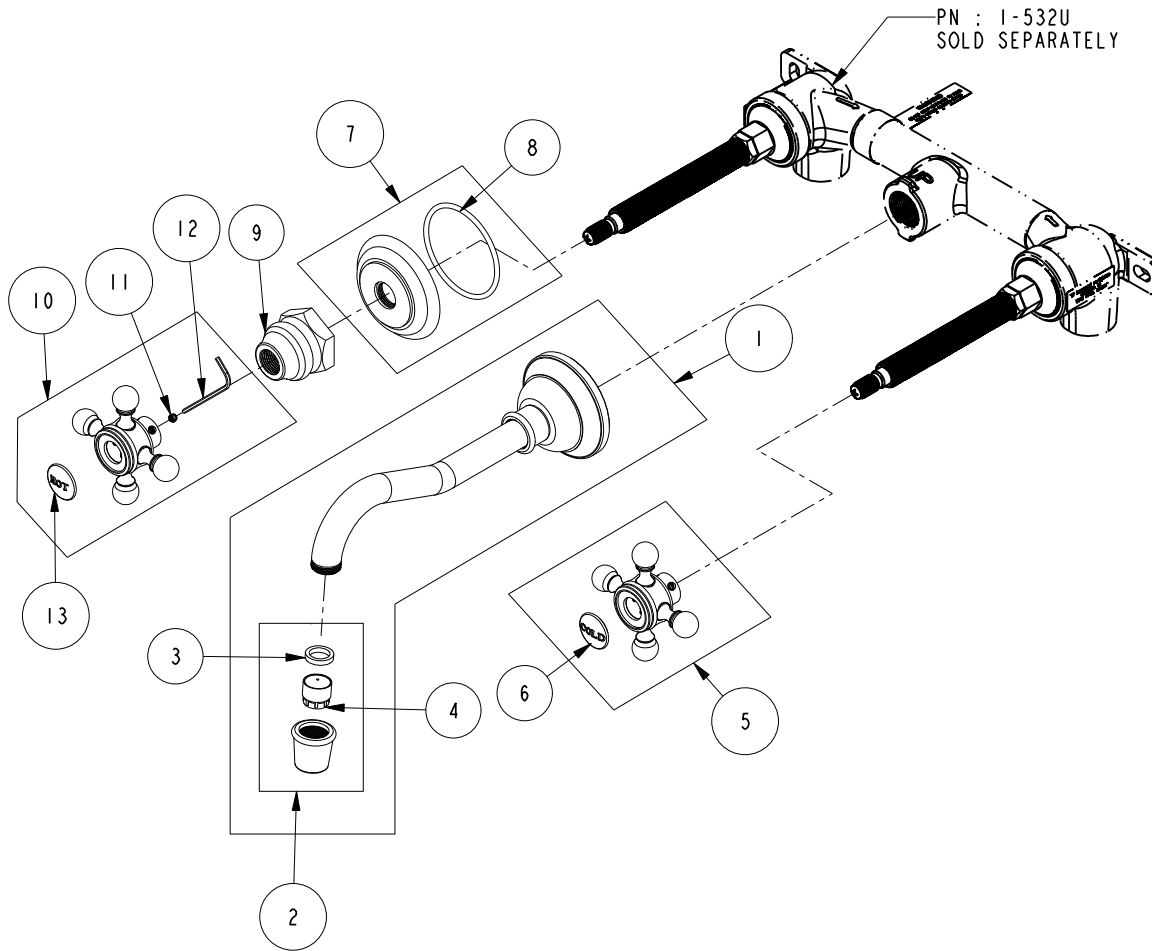


REPLACEMENT PARTS

ITEM	PT/ASSY	SPECIFY FINISH	DESCRIPTION
1	2-218	YES	SPOUT ASM - LAV IN WALL
2	2-633	YES	AERATOR ASM
3	91265		WSHR, 11 ID X 15 OD X 2.8 MM THK, FLT, RUBBER NSF 61 APPR
4	12402		AERATOR INSERT, TT SIZE, 1.2 GPM
5	2-142	YES	HANDLE ONLY, COLD
6	1-107		COLD BUTTON ASSEMBLY W/ ADHESIVE
7	20-742	YES	ESCUTCHEON ASM
8	91753		O-RING, # 2-136, EP, 50 DURO - GREY
9	10523	YES	HEX ESCUTCHEON BONNET
10	2-141	YES	HANDLE ONLY, HOT
11	92000		SCREW 8 - 32 X 1/8 SS
12	10192		HEX KEY TOOL, #8 5/64
13	1-108		HOT BUTTON ASSEMBLY W/ ADHESIVE



TRIM KIT 3-9301
3-9301

REV D EN-4640 04/04/23 APPROVED RS

NEWPORT BRASS.

t: 949.417.5207 | www.newportbrass.com