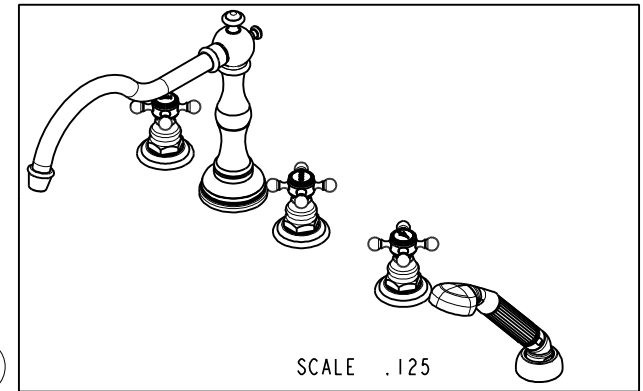
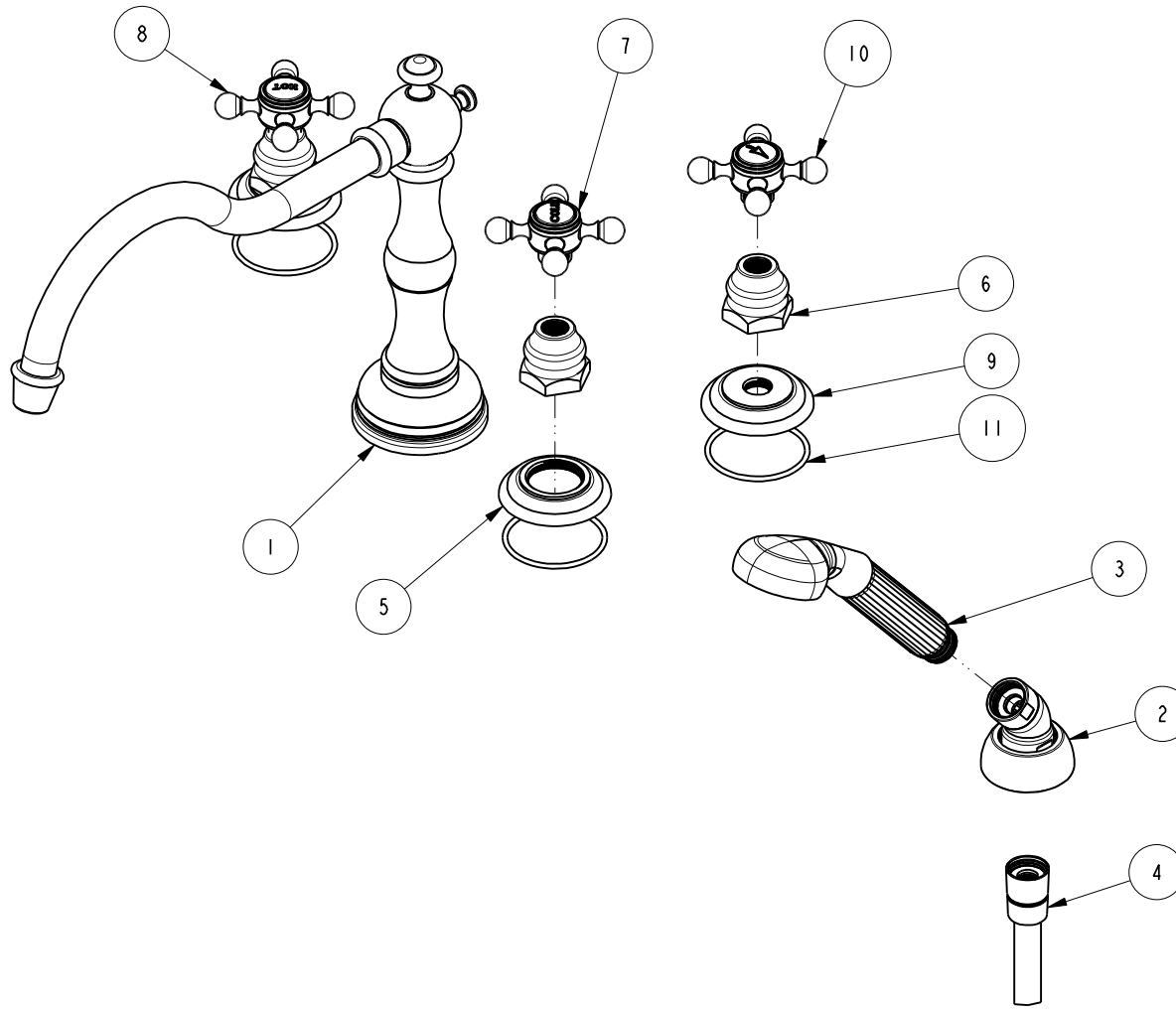


NOTES:

1. TO INSPECT ASSEMBLY, FOLLOW FIRST ARTICLE AND IN PROCESS INSPECTION SHEET.

BILL OF MATERIAL (CURRENT LEVEL)

ITEM	PT/ASSY	DESCRIPTION	TYPE	QTY.
1	2-210	930 ROMAN TUB SPOUT	ASSEMBLY	1
2	6-289	DECK FLANGE TRIM	ASSEMBLY	1
3	280	HAND SHOWER WITH GROOVE	ASSEMBLY	1
4	284	59 IN. SPIRAL SHOWER HOSE	ASSEMBLY	1
5	12171	ESCUTCHEON, ROMAN TUB	PART	2
6	10523	HEX ESCUTCHEON BONNET	PART	3
7	2-142	HANDLE ONLY, COLD	ASSEMBLY	1
8	2-141	HANDLE ONLY, HOT	ASSEMBLY	1
9	10050	ESCUTCHEON WALL VALVE	PART	1
10	2-143	HANDLE ONLY, DIV.	ASSEMBLY	1
11	91753	O-RING, # 2-136, EP, 50 DURO - GREY	PART	3



ZONE	REV	DESCRIPTION	DATE	APPROVED
-	D	EN-4300u	02/02/21	R.S.
-	C	EN-3722	02/08/19	C.G.
-	B	EN-3222	12/05/17	J.A.
-	A	EN-2519	04/23/13	-
-	-	EN-2169	09/11/12	-

COPYRIGHT 2005 BRASSTECH, INC. THESE DRAWINGS AND THE DESIGNS DEPICTED HEREIN ARE THE PROPRIETARY PROPERTY OF BRASSTECH. ANY USE OR REPRODUCTION IS SUBJECT TO THE EXPRESS APPROVAL OF BRASSTECH. UNAUTHORIZED USE IS STRICTLY PROHIBITED. ALL RIGHTS RESERVED.

TESTING	-	-	-
ASSEMBLY	-	-	-
PLATING	-	-	-
POLISHING	-	NEXT ASSY	USED ON
MACHINING	-	APPLICATION	
TOOLING FIXTURE #	REMOVE ALL BURRS AND SHARP EDGES		

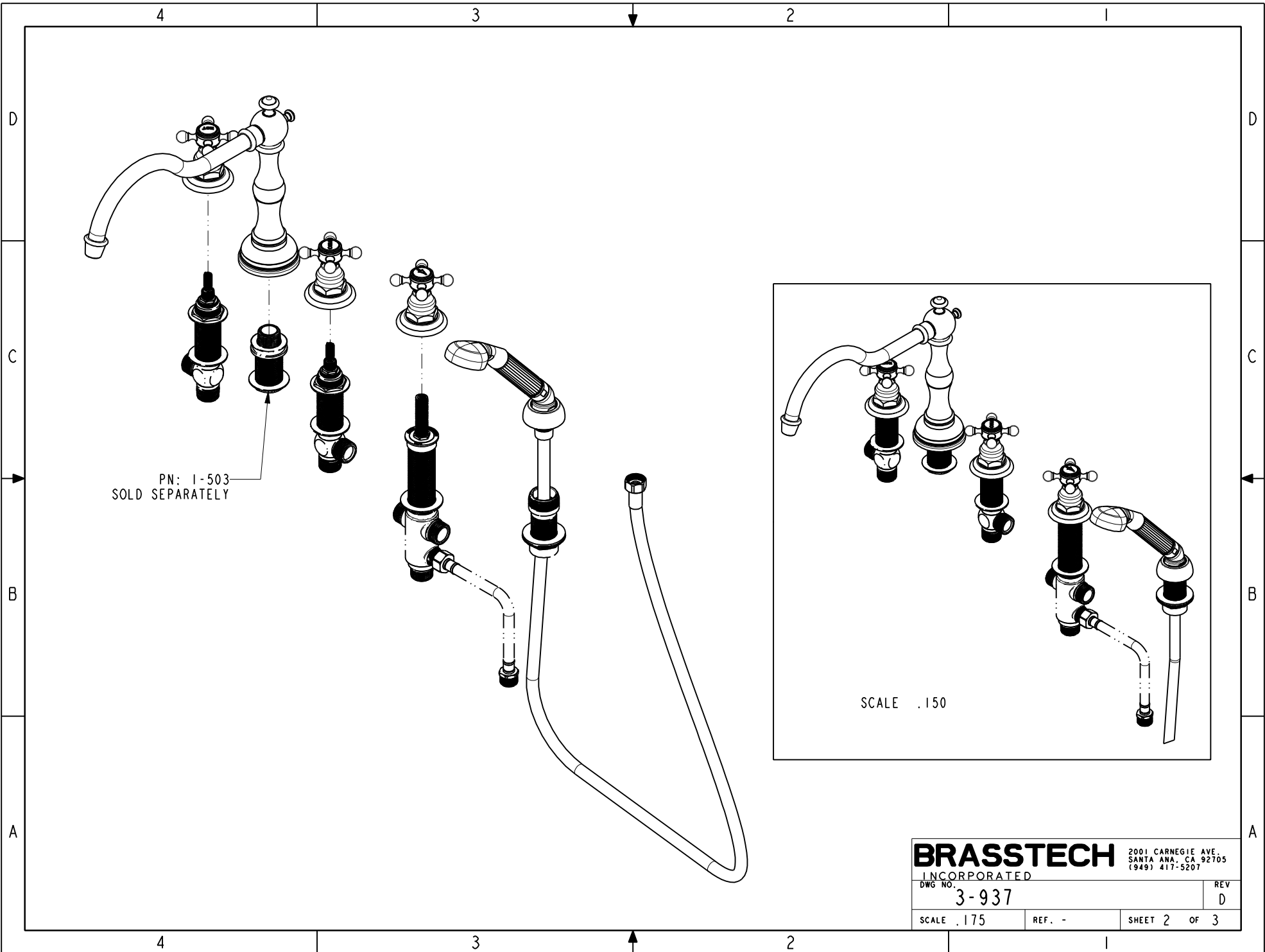
UNITS ARE: INCHES [MM]	
TOLERANCES ARE:	
FRACTIONS DECIMALS	ANGLES
±1/16"	±°
.X ±.1 [2,5]	
.XX ±.06 [1,5]	
(X.XXX) DENOTES CRITICAL DIMS.	
ALL THREADS ARE CRITICAL	
DRAWN	JINSON
CHECKED	R.S.
APPROVED	R.S.

BRASSTECH 2001 CARNEGIE AVE. SANTA ANA, CA 92705 (949) 417-5207
INCORPORATED

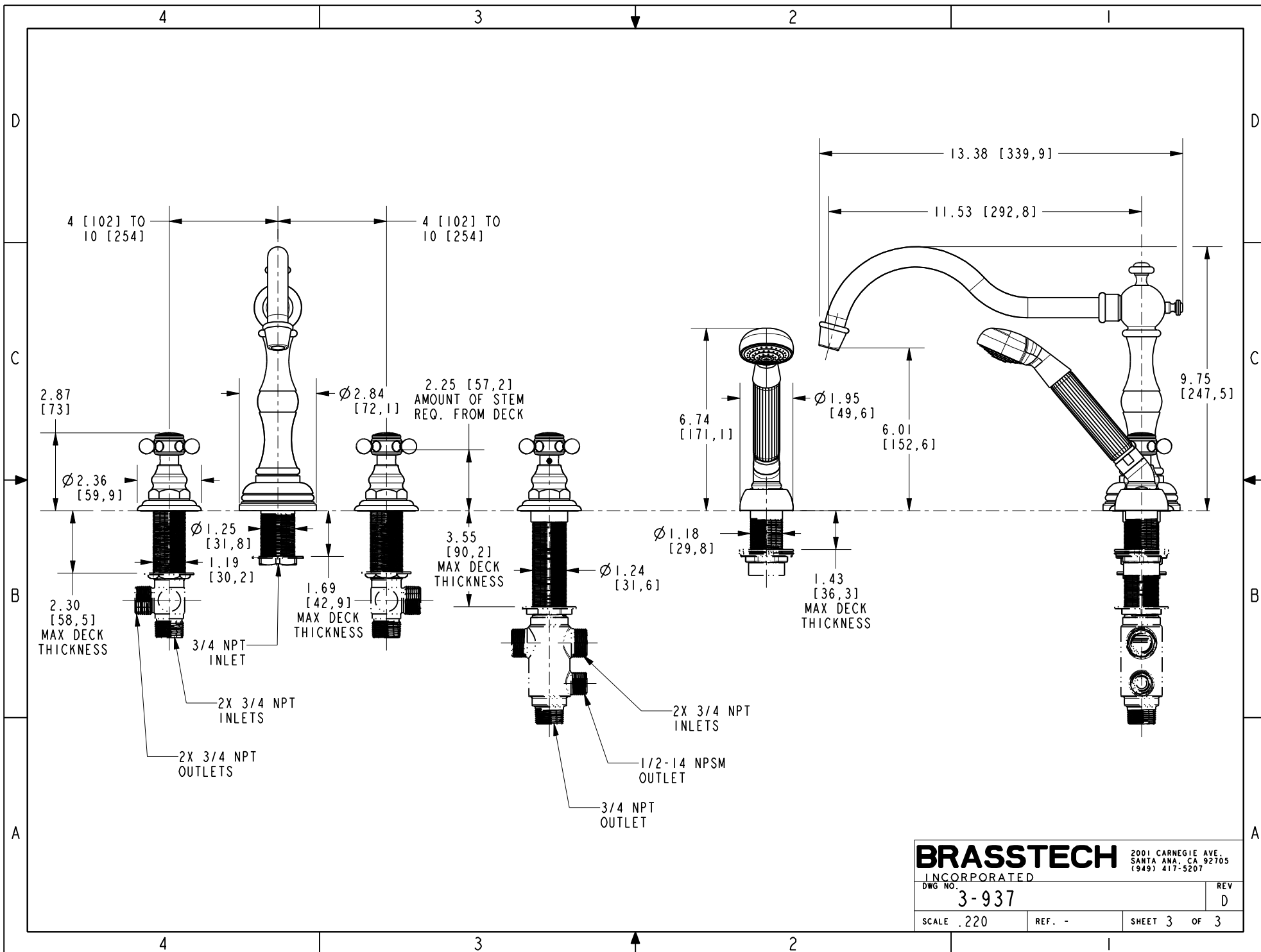
TRIM KIT, 3V ROMAN TUB SET

DWG NO. **3-937** REV **D**

SCALE .250 REF. - SHEET 1 OF 3



BRASSTECH		2001 CARNEGIE AVE. SANTA ANA, CA 92705 (949) 417-5207	
INCORPORATED			
DWG NO.	3-937	REV	D
SCALE .175	REF. -	SHEET 2 OF 3	



BRASSTECH 2001 CARNEGIE AVE.
 INCORPORATED SANTA ANA, CA 92705
 (949) 417-5207

DWG NO.	3-937	REV	D
SCALE	.220	REF.	-
SHEET 3		OF 3	