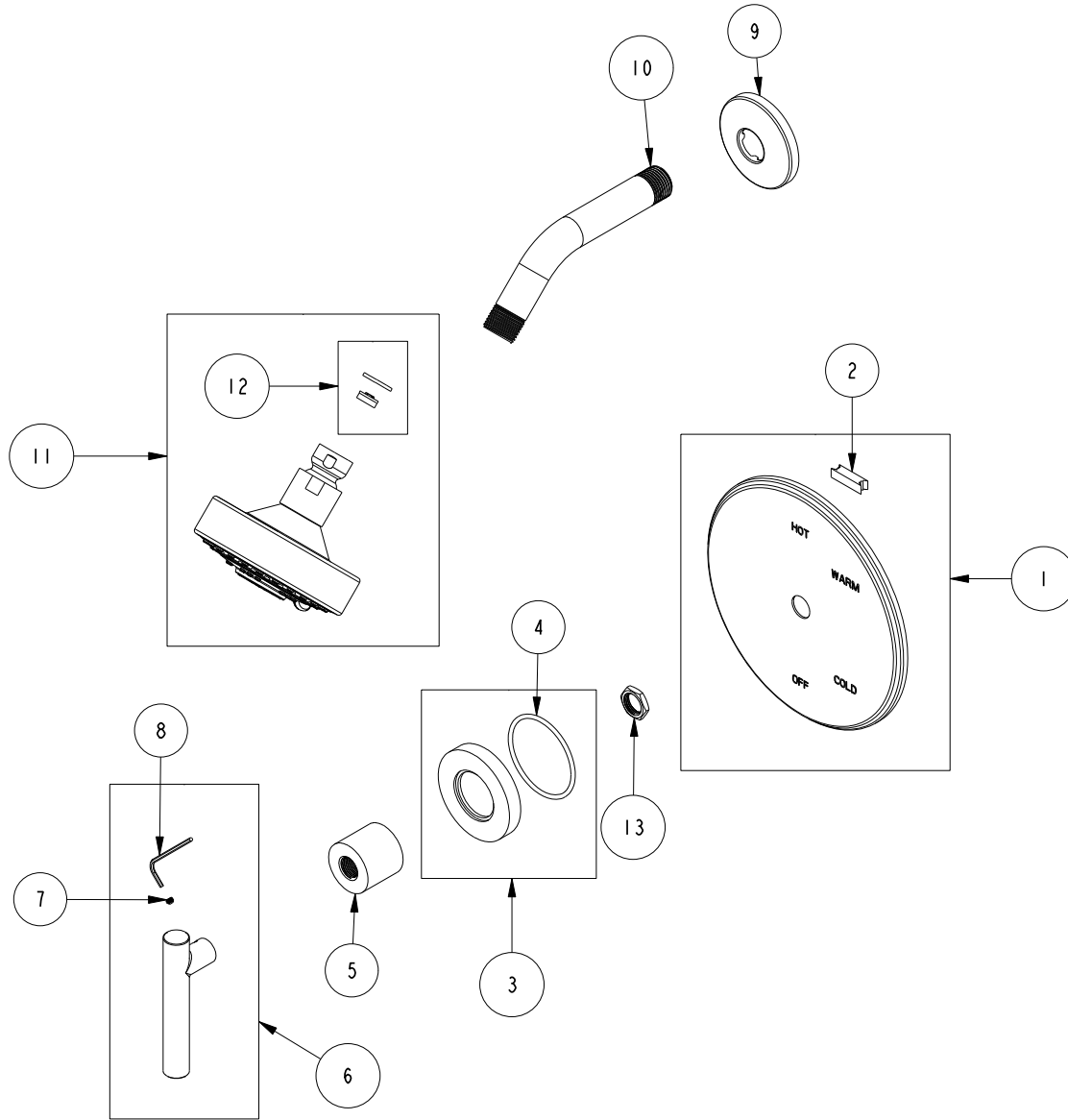


# REPLACEMENT PARTS



ITEM	PT/ASSY	SPECIFY FINISH	DESCRIPTION
1	2-439	YES	COVERPLATE BP W/O DIVERTER
2	H-78		TAPE NEO
3	2-100	YES	ESCUTCHEON - ASSEMBLY
4	91753		O-RING, # 2-136, EP, 50 DURO - GREY
5	10620	YES	BONNET
6	2-111H	YES	HANDLE LEVER ASM, HOT
7	92000		SCREW 8 - 32 X 1/8 SS
8	10192		HEX KEY TOOL, #8 5/64
9	206	YES	FLANGE - SHWR ARM
10	200	YES	SHOWER ARM 6" BRASS
11	2155	YES	SHOWER HEAD, CONTEMP
12	10-327		GASKET & FLOW REGULATOR SUB ASM
13	10259		HEX NUT 9/16 X 20 MADE

TRIM KIT - 3-994LBP  
3-994LBP

REV H EN-4868 08/23/24

**NEWPORT BRASS.**

t: 949.417.5207 | www.newportbrass.com