

4

3

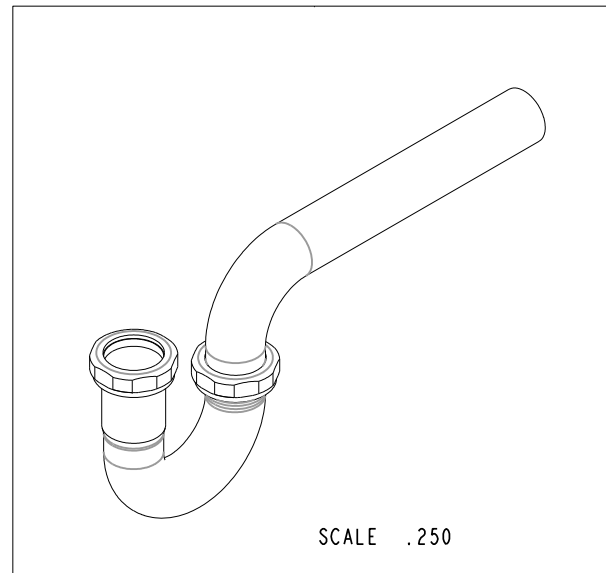
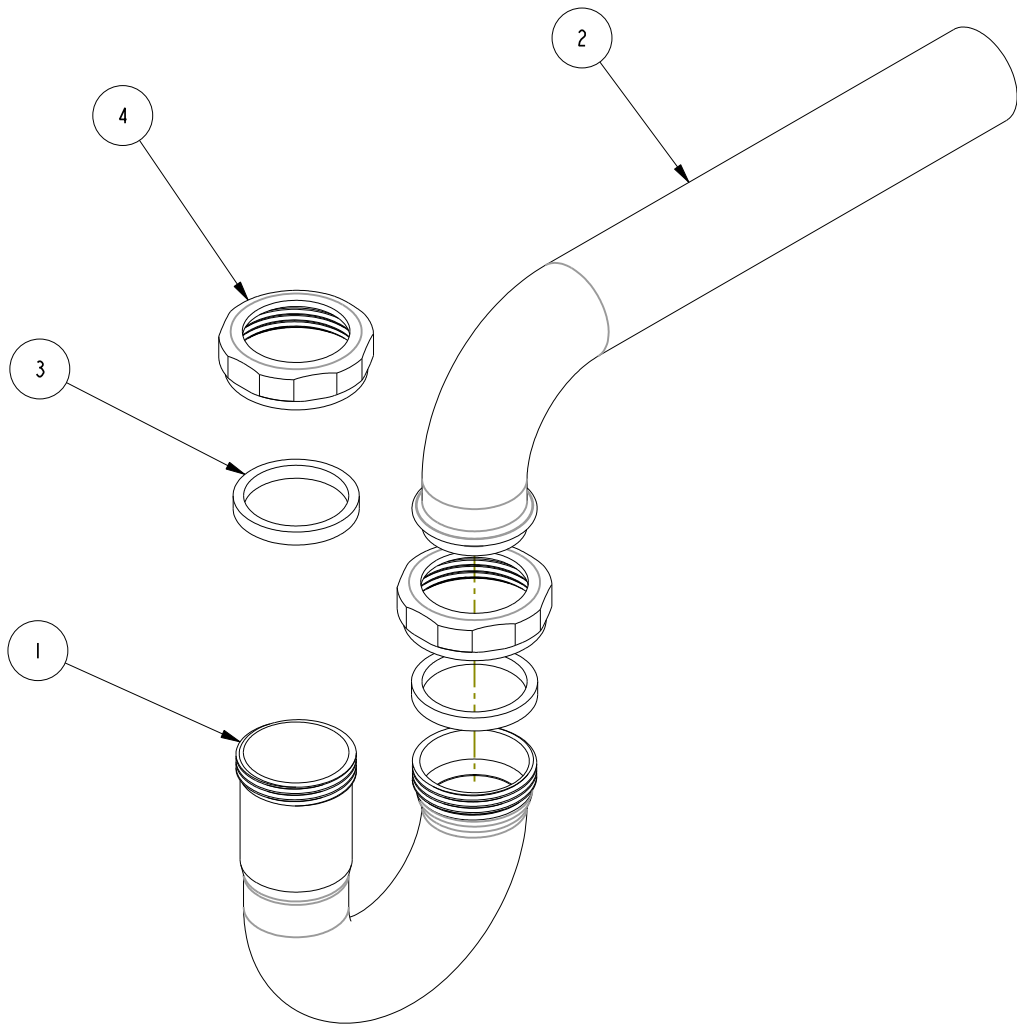
2

NOTES:

(N1) 1. TO INSPECT ASSEMBLY, FOLLOW FIRST ARTICLE AND IN PROCESS INSPECTION SHEET.

BILL OF MATERIAL (CURRENT LEVEL)

ITEM	PT/ASSY	DESCRIPTION	TYPE	QTY.
1	50319	J - BEND, P-TRAP	PART	1
2	50320	WLL BND 1.25 X 8 (304)	PART	1
3	91193	WSHR, 1.25 ID X 1.5 OD X .19 THK, FLT, RBBBER		2
4	50321	LOCKNUT 1.25" BRS (301)	PART	2



COPYRIGHT 2005 BRASSTECH, INC. THESE DRAWINGS AND THE DESIGNS DEPICTED HEREIN ARE THE PROPRIETARY PROPERTY OF BRASSTECH. ANY USE OR REPRODUCTION IS SUBJECT TO THE EXPRESS APPROVAL OF BRASSTECH. UNAUTHORIZED USE IS STRICTLY PROHIBITED. ALL RIGHTS RESERVED.

TESTING	-	-	-
ASSEMBLY	-	-	-
PLATING	-		
POLISHING	-	NEXT ASSY	USED ON
MACHINING	-	APPLICATION	
TOOLING FIXTURE #		REMOVE ALL BURRS AND SHARP EDGES	

UNITS ARE: INCHES [MM]	
TOLERANCES ARE:	
FRACTIONS DECIMALS	ANGLES
±1/16"	.X ±.1 [2.5] ±1°
	.XX ±.06 [1.5]
(X.XXX) DENOTES CRITICAL DIMS. ALL THREADS ARE CRITICAL	
DRAWN	NMS 10/19/21
CHECKED	W. SANTOS 10/19/21
APPROVED	W. SANTOS 10/19/21

BRASSTECH 2001 CARNEGIE AVE. SANTA ANA, CA 92705 (949) 417-5207
INCORPORATED

P-TRAP 1-1/4 W/O FLANGE

DWG NO. **301** REV **A**

SCALE **.438** REF. - SHEET **1** OF **2**

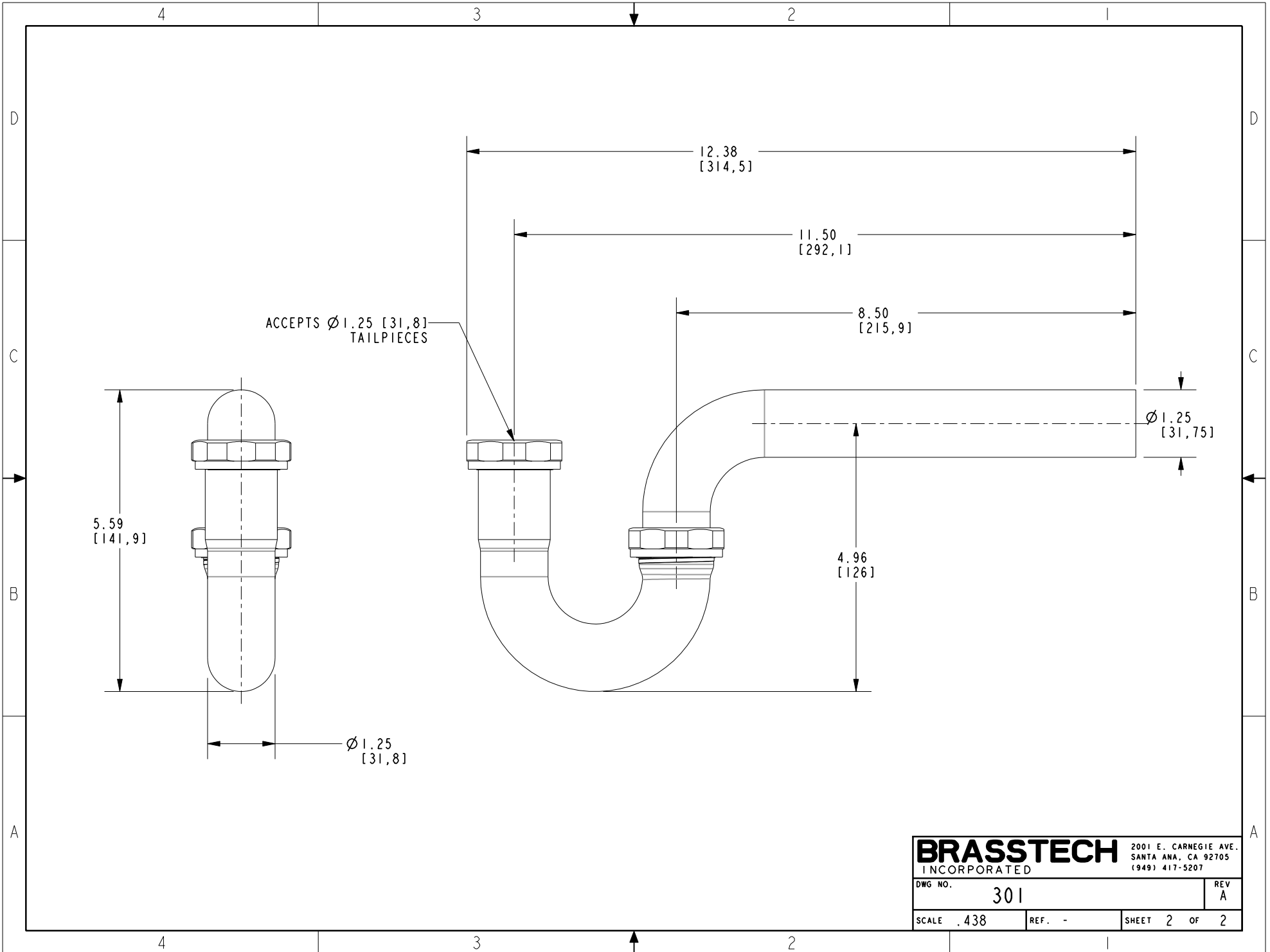
-	A	EN-430011	10/19/21	N.S.
ZONE	REV	DESCRIPTION	DATE	APPROVED

4

3

2

1



BRASSTECH		2001 E. CARNEGIE AVE.	
INCORPORATED		SANTA ANA, CA 92705	
		(949) 417-5207	
DWG NO.	301	REV	A
SCALE .438	REF. -	SHEET 2	OF 2