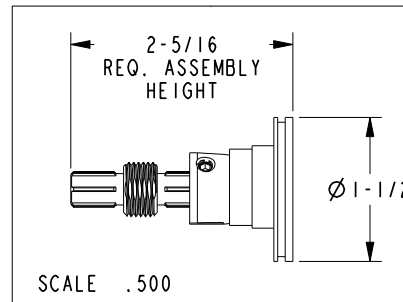
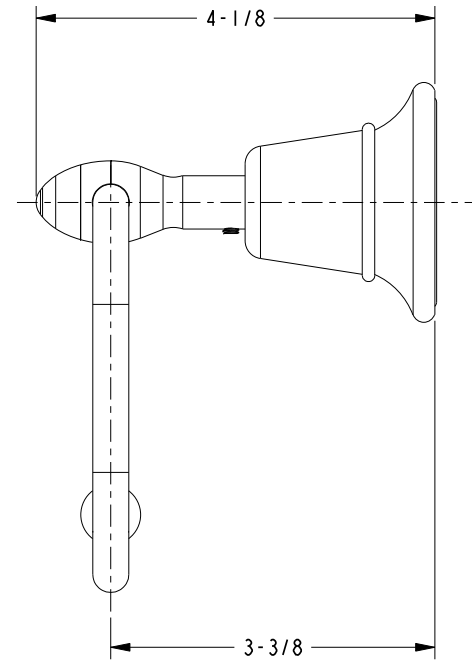
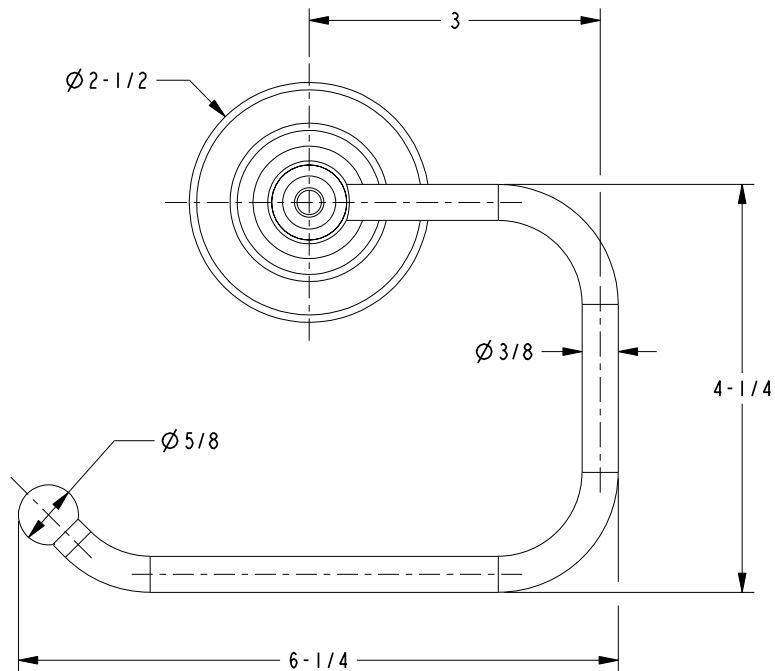


BILL OF MATERIAL (CURRENT LEVEL)				
ITEM	PT/ASSY	DESCRIPTION	TYPE	QTY.
1	1-212	ACCESSORY MTG KIT	ASSEMBLY	1
2	12243	HANDLE ESCUTCHEON	PART	1
3	40301	OPEN TOWEL RING POST	PART	1
4	92000	SCRW, 8-32 X 1/8 SKT HD CUP PT SS	PART	1
5	92107	SCRW, 8-32 X 1/4 SKT HD DOG PT SS	PART	1
6	2-304	ROLLER ASM-TISSUE	ASSEMBLY	1
7	1-125	HARDWARE KIT	ASSEMBLY	1
8	91231	O-RING, #2-136, EPDM, 65-75 DURO	PART	1

# SPECIFICATION DWG



DIMENSIONS ARE IN INCHES AND AN APPROXIMATION OF A TYPICAL INSTALLATION

COPYRIGHT 2005 BRASSTECH, INC. THESE DRAWINGS AND THE DESIGNS DEPICTED HEREIN ARE THE PROPRIETARY PROPERTY OF BRASSTECH. ANY USE OR REPRODUCTION IS SUBJECT TO THE EXPRESS APPROVAL OF BRASSTECH. UNAUTHORIZED USE IS STRICTLY PROHIBITED. ALL RIGHTS RESERVED.

<b>BRASSTECH</b> INCORPORATED		2001 CARNEGIE AVE. SANTA ANA, CA 92705 (949) 417-5207
DWG NO.	31-27	REV B
SCALE .500	REF. -	SHEET 2 OF 2