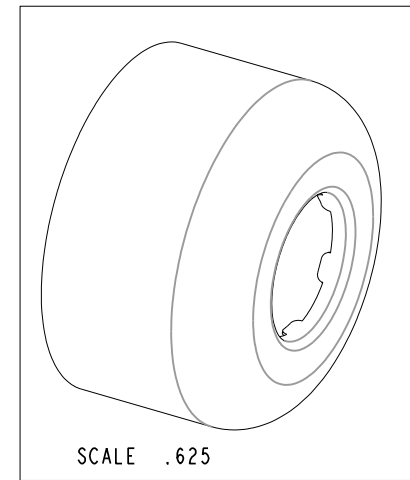
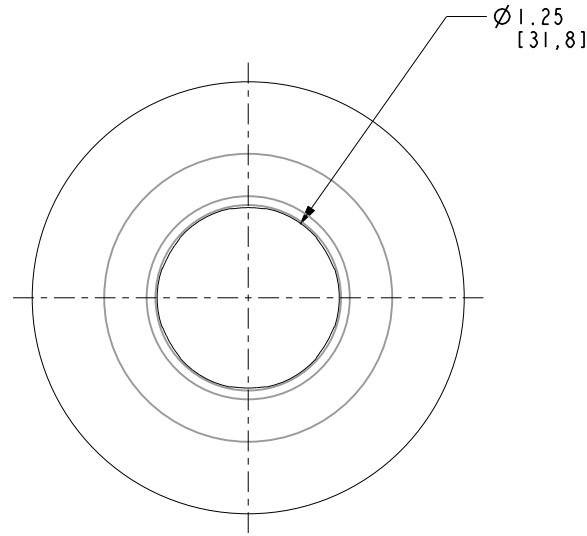
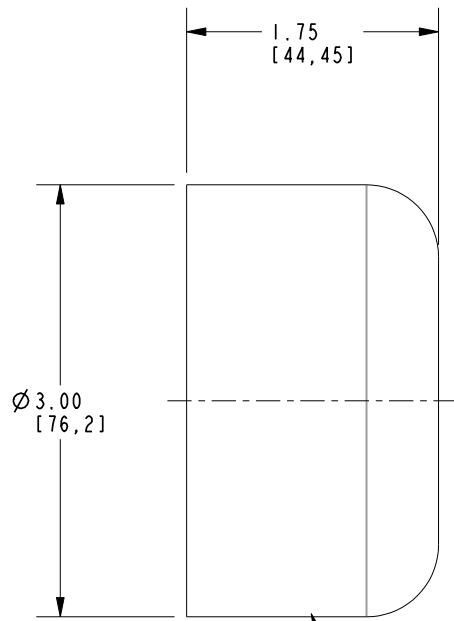


NOTES:

(NI) 1. TO INSPECT ASSEMBLY, FOLLOW FIRST ARTICLE AND IN PROCESS INSPECTION SHEET.

**BILL OF MATERIAL (CURRENT LEVEL)**

ITEM	PT/ASSY	DESCRIPTION	TYPE	QTY.
I	50840	HIGH BOX FLANGE	PART	I



ZONE	REV	DESCRIPTION	DATE	APPROVED
-	B	EN-430011	10/07/21	N.S.
-	A	EO-0937	01/30/08	V.V.
-	-	RELEASED	09/06/07	V.V.

COPYRIGHT 2005 BRASSTECH, INC. THESE DRAWINGS AND THE DESIGNS DEPICTED HEREIN ARE THE PROPRIETARY PROPERTY OF BRASSTECH. ANY USE OR REPRODUCTION IS SUBJECT TO THE EXPRESS APPROVAL OF BRASSTECH. UNAUTHORIZED USE IS STRICTLY PROHIBITED. ALL RIGHTS RESERVED.

TESTING	-	-	3014
ASSEMBLY	-	-	3013-I
PLATING	-	-	3013
POLISHING	-	NEXT ASSY	USED ON
MACHINING	-	APPLICATION	
TOOLING FIXTURE #	REMOVE ALL BURRS AND SHARP EDGES		

UNITS ARE: INCHES [MM]	
TOLERANCES ARE:	
FRACTIONS DECIMALS	ANGLES
±1/16"	.x ±.1 [2,5] ±1°
	.xx ±.06 [1,5]
(X.XXX) DENOTES CRITICAL DIMS. ALL THREADS ARE CRITICAL	
DRAWN	P. MCQUADE 01/30/08
CHECKED	V. VU 01/30/08
APPROVED	V. VU 01/30/08

**BRASSTECH** 2001 CARNEGIE AVE. SANTA ANA, CA 92705 (949) 417-5207  
INCORPORATED

**HIGH BOX FLANGE**

DWG NO. 314	REV B
SCALE .750	REF. - SHEET   OF