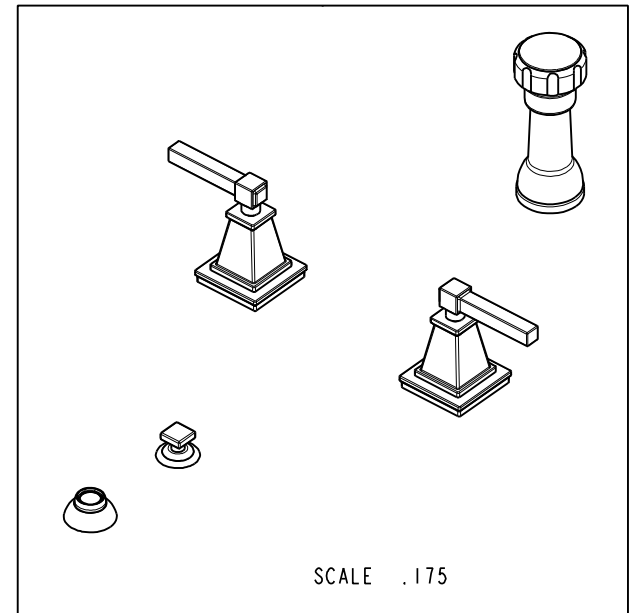
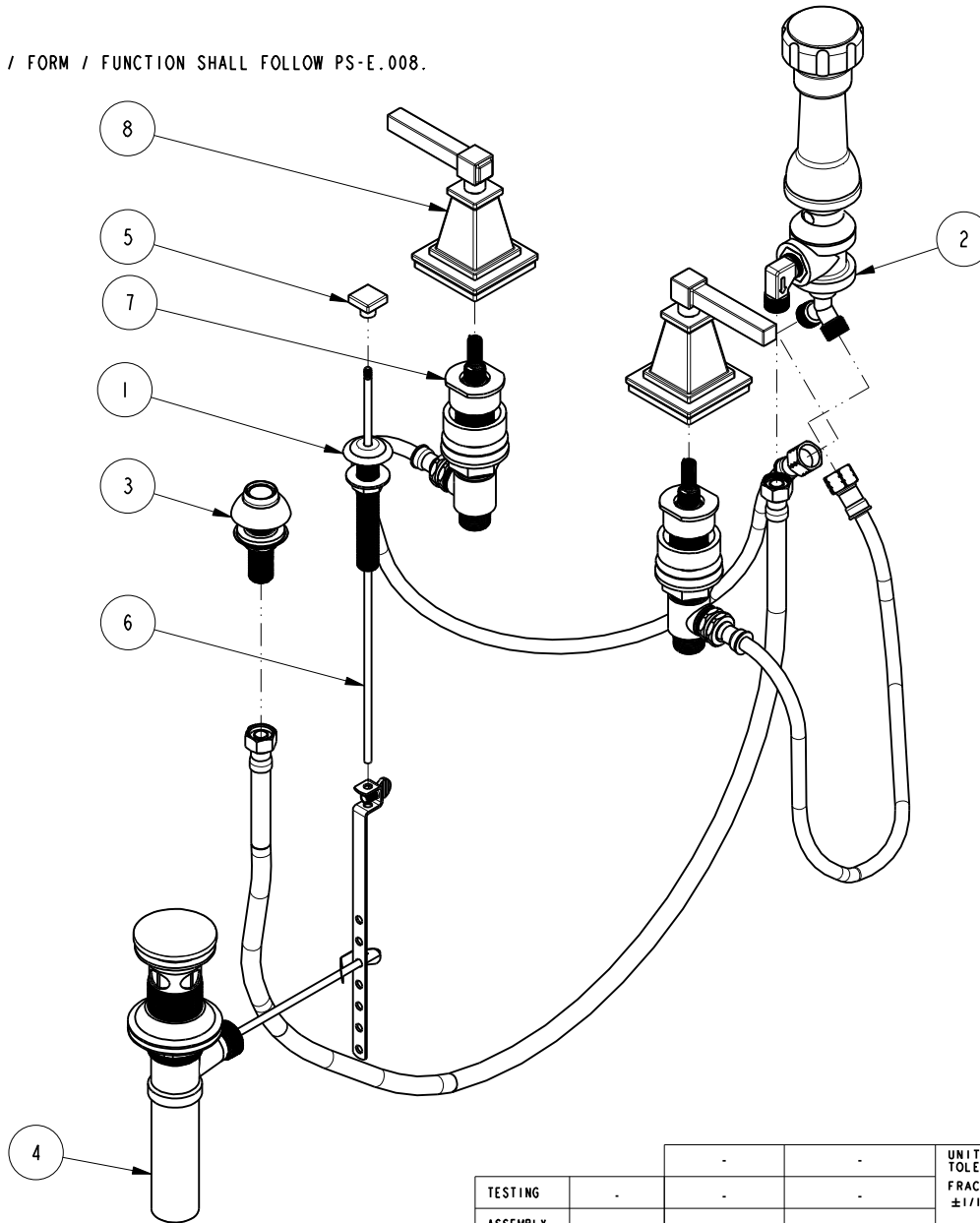


NOTES:

- (N1) 1. FIT / FORM / FUNCTION SHALL FOLLOW PS-E.008.

BILL OF MATERIAL (CURRENT LEVEL)

| ITEM | PT/ASSY | DESCRIPTION | TYPE | QTY. |
|------|---------|---------------------------|----------|------|
| 1 | 2-159 | POP-UP ROD GUIDE ASSEMBLY | ASSEMBLY | 1 |
| 2 | 2-235 | BIDET DIVERTER / V. BRE | ASSEMBLY | 1 |
| 3 | 2-236 | DOUCHE SPRAY ASSEMBLY | ASSEMBLY | 1 |
| 4 | 325 | POP UP ASSEMBLY | ASSEMBLY | 1 |
| 5 | 10676 | SQUARE POP UP KNOB | PART | 1 |
| 6 | 10288 | 3/16" POP UP ROD | PART | 1 |
| 7 | 1-667 | VALVE KIT ASSEMBLY | ASSEMBLY | 1 |
| 8 | 3-580 | LEVER HANDLE W/ESC. | ASSEMBLY | 2 |



| | | | |
|-----------|-----------|----------------------------------|---------|
| TESTING | - | - | - |
| ASSEMBLY | - | - | - |
| PLATING | - | - | - |
| POLISHING | - | NEXT ASSY | USED ON |
| MACHINING | - | APPLICATION | |
| TOOLING | FIXTURE # | REMOVE ALL BURRS AND SHARP EDGES | |

UNITS ARE: INCHES [MM]
TOLERANCES ARE:
FRACTIONS DECIMALS ANGLES
 $\pm 1/16"$.X $\pm .1$ [2.5] $\pm 1^\circ$
.XX $\pm .06$ [1.5]

(X.XXX) DENOTES CRITICAL DIMS.
ALL THREADS ARE CRITICAL

DRAWN JINSON 08/09/16
CHECKED RAVINDRA 08/09/16
APPROVED J.M. 08/09/16

COPYRIGHT 2005 BRASSTECH, INC.
THESE DRAWINGS AND THE DESIGNS
DEPICTED HEREIN ARE THE PROPRIETARY
PROPERTY OF BRASSTECH. ANY USE
OR REPRODUCTION IS SUBJECT TO
THE EXPRESS APPROVAL OF BRASSTECH.
UNAUTHORIZED USE IS STRICTLY
PROHIBITED. ALL RIGHTS RESERVED.

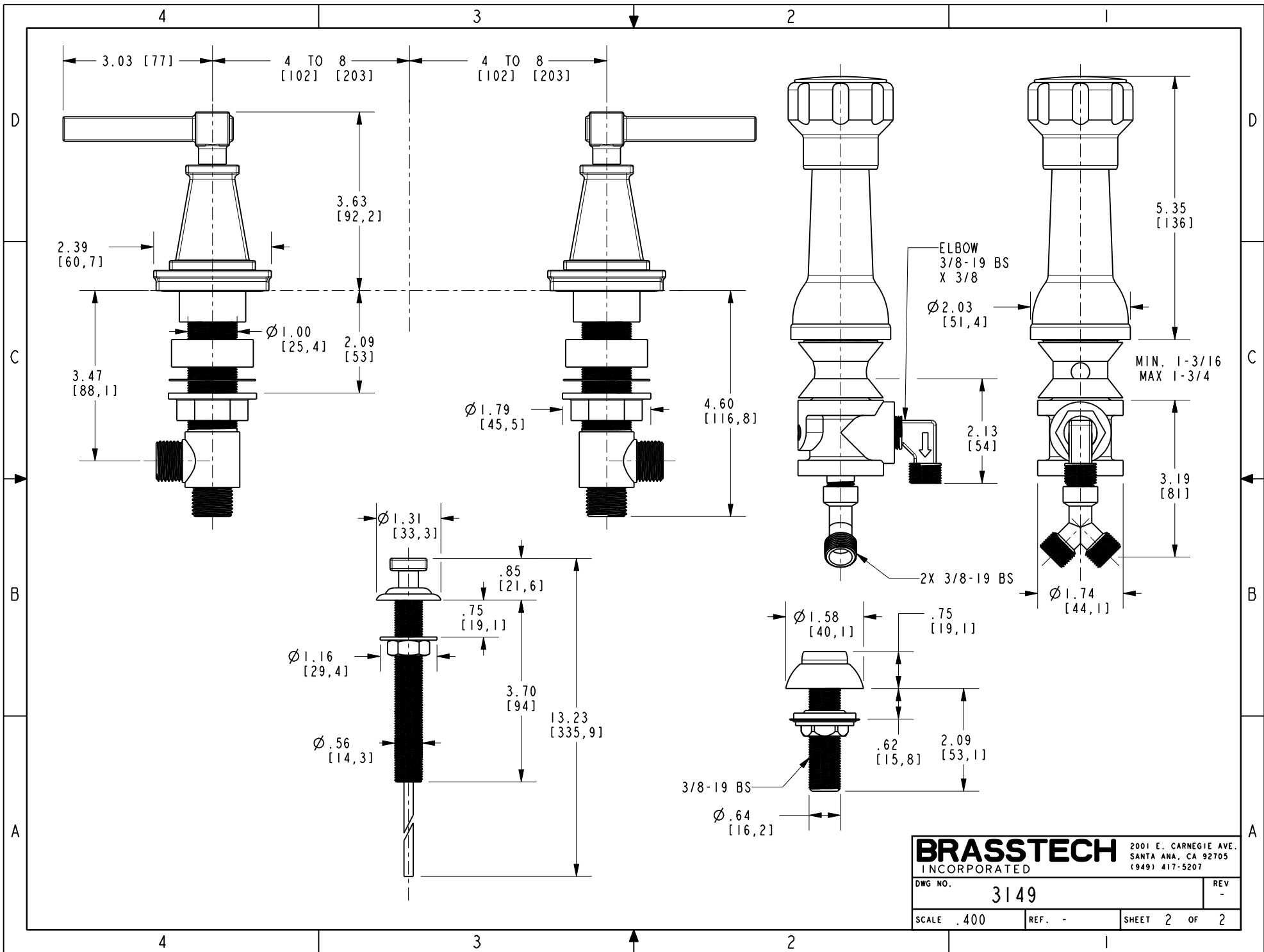
| EN-3061 | 08/09/16 | J.M. | | |
|---------|----------|-------------|------|----------|
| ZONE | REV | DESCRIPTION | DATE | APPROVED |

BRASSTECH 2001 CARNEGIE AVE.
INCORPORATED SANTA ANA, CA 92705
(949) 417-5207

BIDET SET

DWG NO. **3149** REV -

SCALE .200 REF. - SHEET | OF 2



| | | | |
|------------------|------|--|---|
| BRASSTECH | | 2001 E. CARNEGIE AVE. SANTA ANA, CA 92705 (949) 417-5207 | |
| DWG NO. | 3149 | REV | - |
| SCALE | .400 | REF. | - |
| SHEET 2 | | OF 2 | |