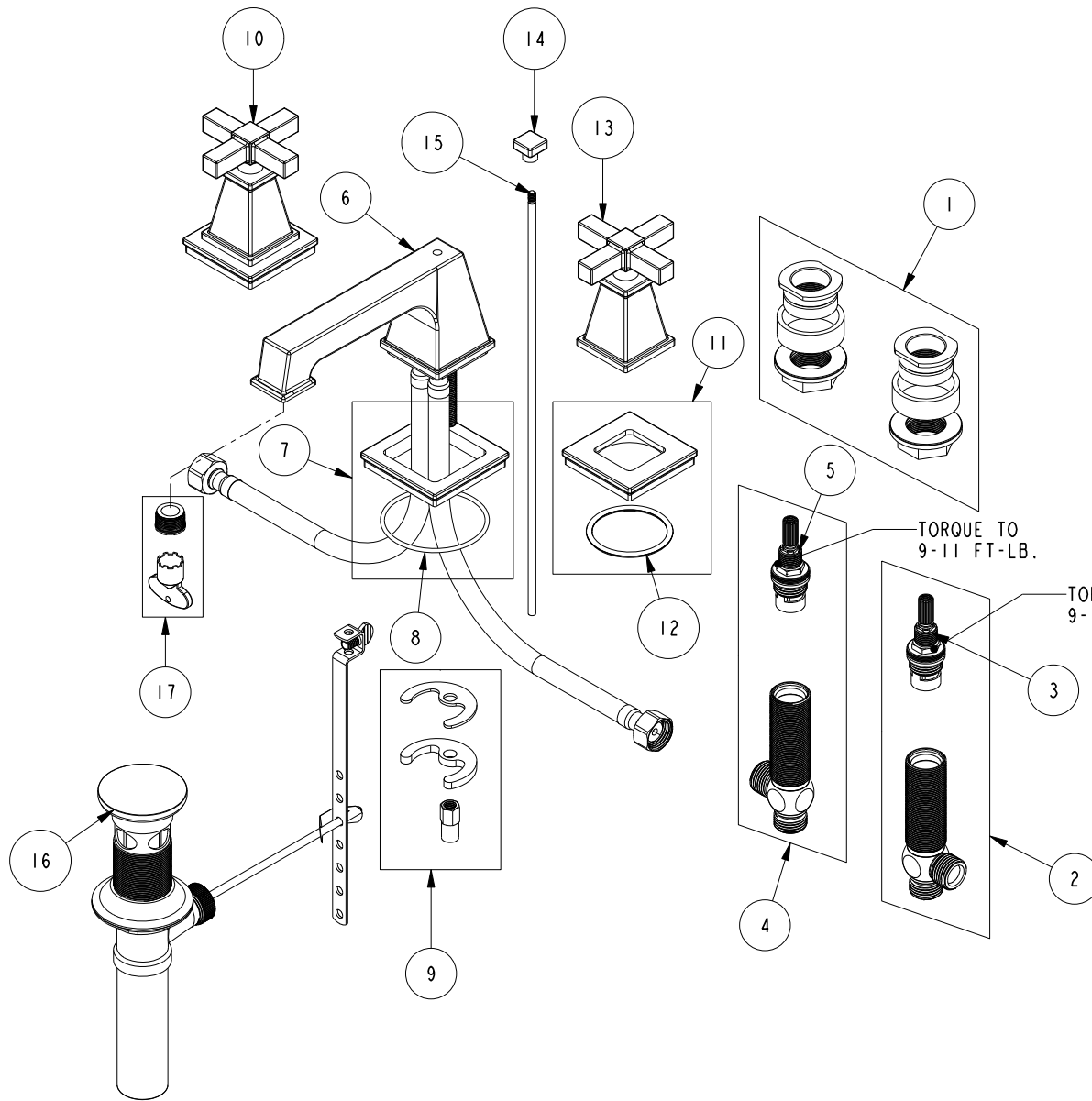


REPLACEMENT PARTS



ITEM	PT/ASSY	SPECIFY FINISH	DESCRIPTION
1	1-226		WIDESPREAD MOUNTING HARDWARE
2	1-527		W/S CART/BODY ASM (HOT)
3	1-002		W/S CARTRIDGE - HOT
4	1-526		W/S CART/BODY ASM (COLD)
5	1-001		W/S CARTRIDGE - COLD
6	3-579	YES	W/S SPOUT ASM
7	20-724	YES	BASE ESCUTCHEON ASM
8	91769		O-RING, #2-144, 50 DURO
9	1-491		SPOUT MOUNTING KIT
10	3-581	YES	CROSS HANDLE W/ESC.
11	20-193	YES	ESCUTCHEON ASM
12	91749		O-RING, #2-225, EPDM, 50 DURO - GREY
13	20-195	YES	CROSS HANDLE ASM
14	12551	YES	POP UP KNOB
15	10288	YES	3/16" POP UP ROD
16	325	YES	POP UP ASSEMBLY
17	1-492		AERATOR 1.2 GPM WITH KEY

**WIDESPREAD FAUCET
3150**

REV E EN-4734 11/08/23 APPROVED RS

NEWPORT BRASS.

t: 949.417.5207 | www.newportbrass.com