

4

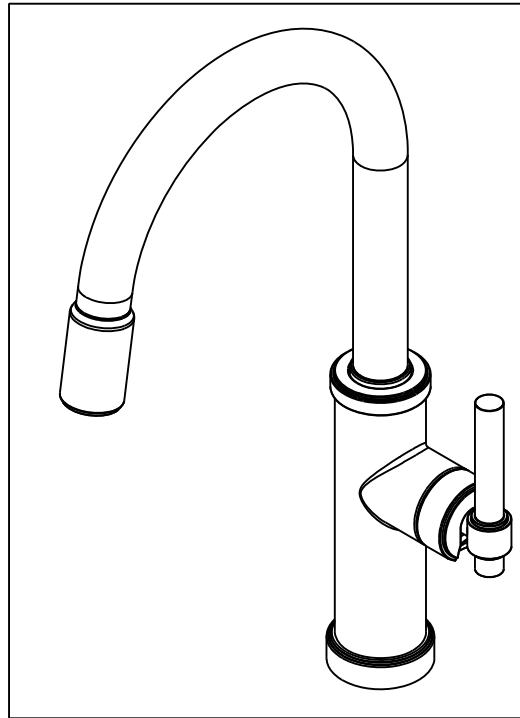
3

2

1

## NOTES:

1. TO INSPECT ASSEMBLY, FOLLOW FIRST ARTICLE AND IN PROCESS INSPECTION SHEET.
2. PUT THESE ITEMS IN SEPARATE PLASTIC BAGS.
3. TORQUE TO 8 +/-0.5 LB-FT.
4. APPLY THIN COAT OF SILICON GREASE FOR ALL O-RINGS BEFORE INSTALLATION.
5. APPLY LOCTITE 242, IF SCREW DOES NOT HAVE NYLON PATCH.
6. APPLY LOCTITE 680.
7. PULL OUT HOSE AND APPLY SILICON GREASE, BETWEEN HOUSE AND SPOUT, 10" FROM OUTLET TO HOSE.
8. TORQUE SWIVEL NUT TO 10 +/-2 LB-IN.
9. TORQUE TO 10 +/-2 LB-FT.
10. TORQUE TO 7 +/-2 LB-IN.
11. PARTIALLY THREAD MOUNTING KIT ONTO SHANK.
12. DO NOT DOCK SPRAY HEAD TO SPOUT WHEN PACKAGING.
13. PLACE ZIP TIE 2" FROM BOTTOM OF SHANK.



## BILL OF MATERIAL (CURRENT LEVEL)

ITEM	PT/ASSY	DESCRIPTION	TYPE	QTY.
1	20-227	BASE RING ASM	ASSEMBLY	1
2	20-228	MAIN BODY ASM, TAFT	ASSEMBLY	1
3	13669	COLLAR	PART	1
4	13672	PULLDOWN COLLAR ADAPTER	PART	1
5	91608	O-RING, #2-122, EPDM, 65-75 DURO	PART	1
6	12667	SPOUT ADAPTER	PART	1
7	91030	O-RING, #2- 115, EPDM, 65-75 DURO, NSF 61	PART	4
8	91712	SLEEVE	PART	1
9	13385	PULLDOWN SPOUT - LONG	PART	1
10	91544	MAGNET DOCKING	ASSEMBLY	1
11	3-592	SPRAY HEAD, CONTEMP	ASSEMBLY	1
12	11877	HOSE, PULLDOWN SWIVEL	ASSEMBLY	1
13	1-064	SINGLE LEVER CARTRIDGE	PART	1
14	1-266	CART. RETAINER ASM	ASSEMBLY	1
15	12843	HANDLE HUB	PART	1
16	11874	HANDLE ADAPTER SCREW	PART	1
17	20-320	HANDLE LEVER ASM	ASSEMBLY	1
18	91534	CARTRIDGE STEM INSERT	PART	1
19	91255	O-RING, #2- 011, EPDM, 65-75 DURO, NSF-61	PART	2
20	91568	RETAINER CLIP	PART	1
21	1-256	MOUNTING KIT	ASSEMBLY	1
22	91341	ZIP TIE	PART	1
23	98044	LABEL - HOT	PART	1
24	1-286	WEIGHT ASM	ASSEMBLY	1
25	13464	ADAPTER EXTENSION	PART	1
26	91114	O-RING, #2- 116, EPDM, 65-75 DURO, NSF 61	PART	2

-	F	EN-4325a	06/04/21	J.M.
-	E	EN-4192A	08/25/20	J.M.
-	D	EN-4200A	09/24/20	C.G.
-	C	EN-4167	06/10/20	JMR
-	B	EN-3931b	09/23/19	J.M.
-	A	EN-3413b	11/14/17	JM
-	-	EN-3229	09/25/17	JM
ZONE	REV	DESCRIPTION	DATE	APPROVED

COPYRIGHT 2005 BRASSTECH, INC. THESE DRAWINGS AND THE DESIGNS DEPICTED HEREIN ARE THE PROPRIETARY PROPERTY OF BRASSTECH. ANY USE OR REPRODUCTION IS SUBJECT TO THE EXPRESS APPROVAL OF BRASSTECH. UNAUTHORIZED USE IS STRICTLY PROHIBITED. ALL RIGHTS RESERVED.

TESTING	-	-	-
ASSEMBLY	-	-	-
PLATING	-	-	-
POLISHING	-	NEXT ASSY	USED ON
MACHINING	-	APPLICATION	
TOOLING FIXTURE #	REMOVE ALL BURRS AND SHARP EDGES		

UNITS ARE: INCHES [MM]			
TOLERANCES ARE:			
FRACTIONS DECIMALS		ANGLES	
±1/16"		±1°	
.X ±.1 [2.5]			
.XX ±.06 [1.5]			
(X.XXX) DENOTES CRITICAL DIMS. ALL THREADS ARE CRITICAL			
DRAWN	JINSON	06/10/20	
CHECKED	JMR	06/10/20	
APPROVED	JMR	06/10/20	

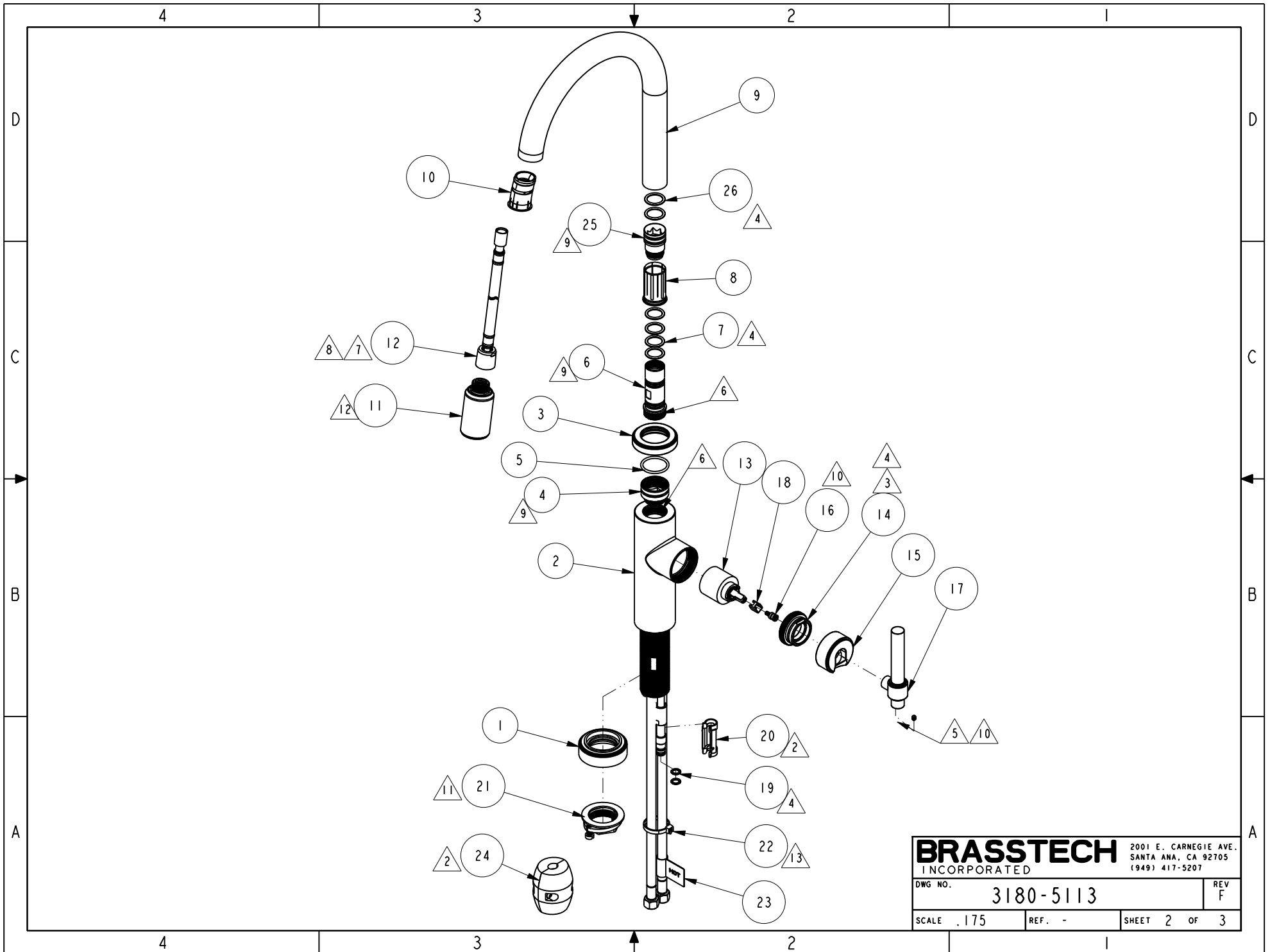
<b>BRASSTECH</b>		2001 CARNEGIE AVE. SANTA ANA, CA 92705 (949) 417-5207	
INCORPORATED			
KITCHEN PULL DOWN			
DWG NO.		REV	
3180-5113		F	
SCALE	REF.	SHEET   OF 3	
.250	-	1 OF 3	

4

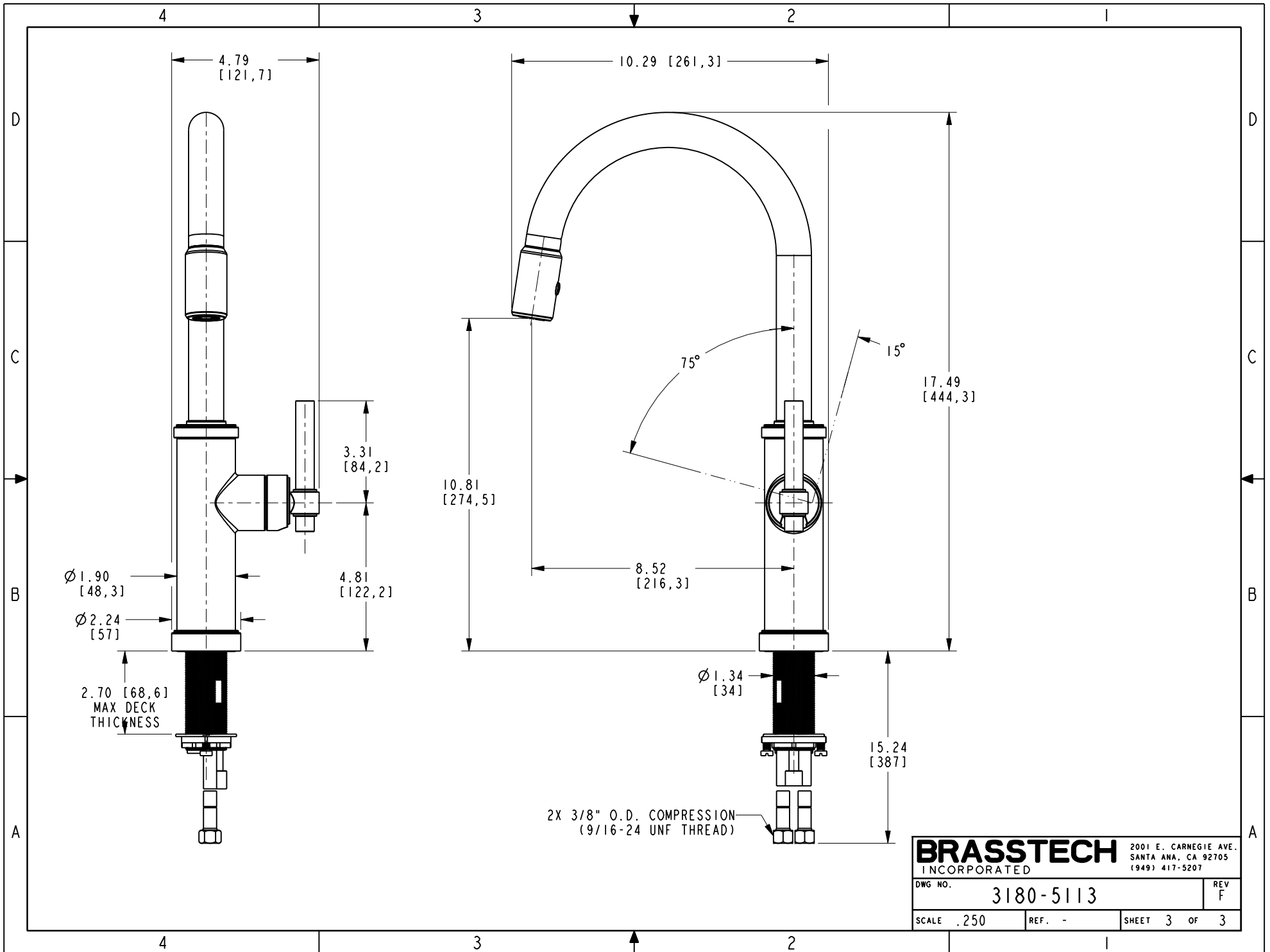
3

2

1



<b>BRASSTECH</b>		2001 E. CARNEGIE AVE. SANTA ANA, CA 92705 (949) 417-5207	
INCORPORATED			
DWG NO.	3180-5113		REV F
SCALE .175	REF. -	SHEET 2 OF 3	



<b>BRASSTECH</b>		2001 E. CARNEGIE AVE. SANTA ANA, CA 92705 (949) 417-5207	
DWG NO.	3180-5113	REV	F
SCALE .250	REF. -	SHEET 3	OF 3