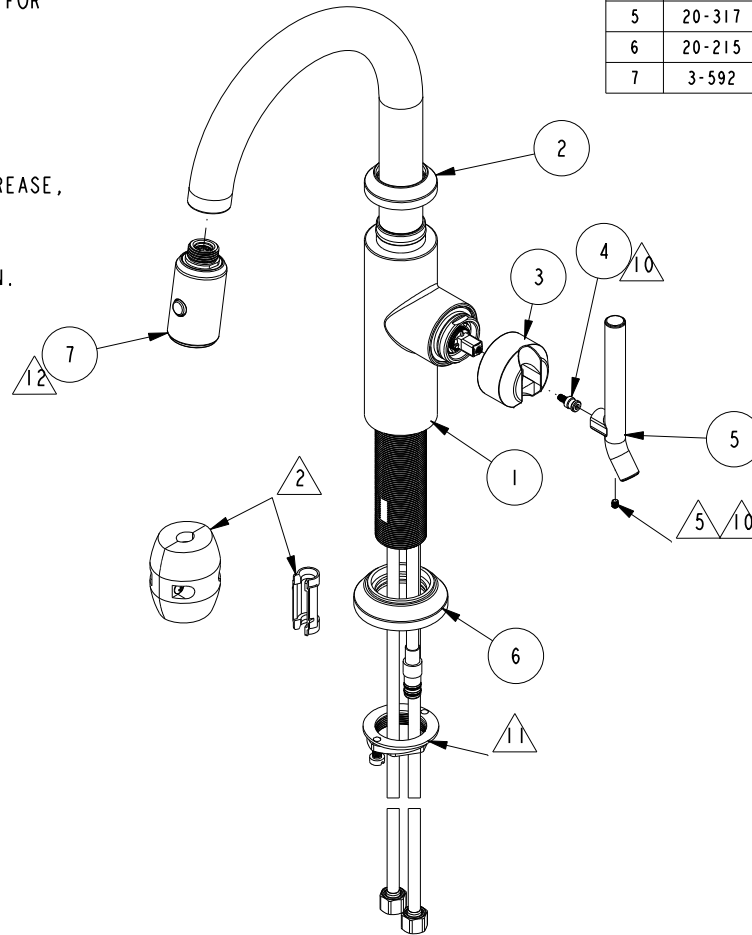


NOTES:

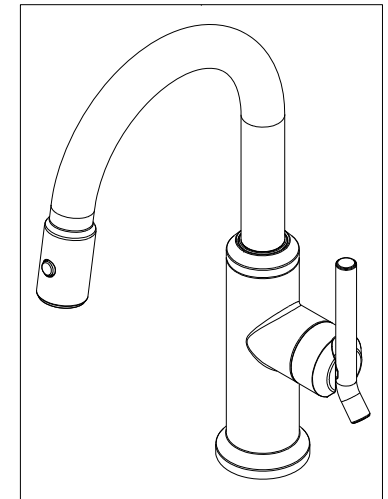
1. TO INSPECT ASSEMBLY, FOLLOW FIRST ARTICLE AND IN PROCESS INSPECTION SHEET.

- 2. PUT THESE ITEMS IN SEPARATE PLASTIC BAGS.
- 3. TORQUE TO 8 +/-0.5 LB-FT.
- 4. APPLY THIN COAT OF SILICON GREASE FOR ALL O-RINGS BEFORE INSTALLATION.
- 5. APPLY LOCTITE 242, IF SCREW DOES NOT HAVE NYLON PATCH.
- 6. APPLY LOCTITE 680.
- 7. PULL OUT HOSE AND APPLY SILICON GREASE, BETWEEN HOSE AND SPOUT, 10" FROM OUTLET TO HOSE.
- 8. TORQUE SWIVEL NUT TO 10 +/-2 LB-IN.
- 9. TORQUE TO 10 +/-2 LB-FT.
- 10. TORQUE TO 7 +/-2 LB-IN.
- 11. PARTIALLY THREAD MOUNTING KIT ONTO SHANK.
- 12. DO NOT DOCK SPRAY HEAD TO SPOUT WHEN PACKAGING.



BILL OF MATERIAL (CURRENT LEVEL)

ITEM	PT/ASSY	DESCRIPTION	TYPE	QTY.
1	3-743	PREP FAUCET BASE ASM	ASSEMBLY	1
2	13668	COLLAR	PART	1
3	12840	HANDLE HUB	PART	1
4	11874	HANDLE ADAPTER SCREW	PART	1
5	20-317	HANDLE LEVER ASM	ASSEMBLY	1
6	20-215	BASE RING ASM	ASSEMBLY	1
7	3-592	SPRAY HEAD, CONTEMP	ASSEMBLY	1



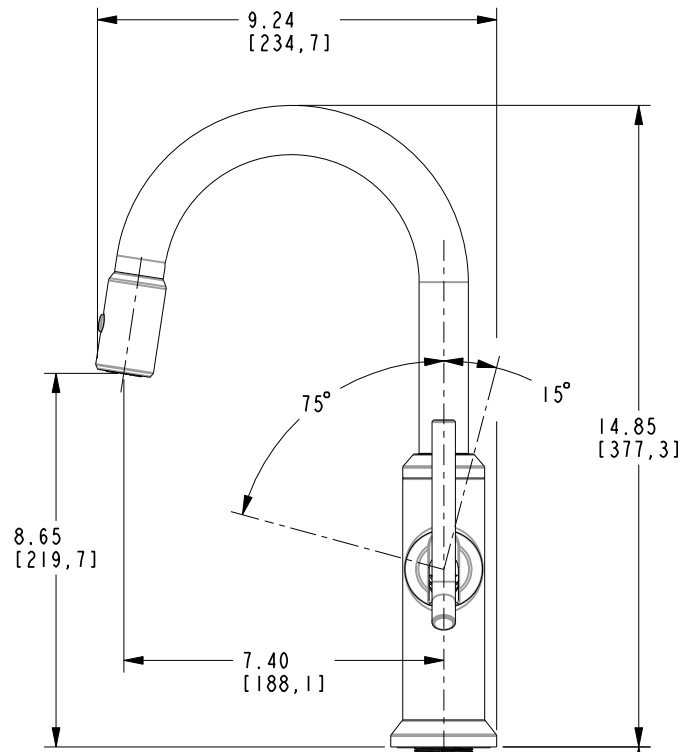
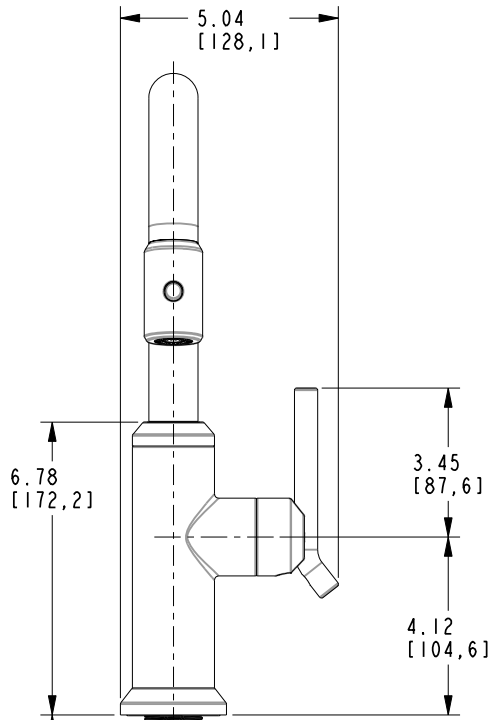
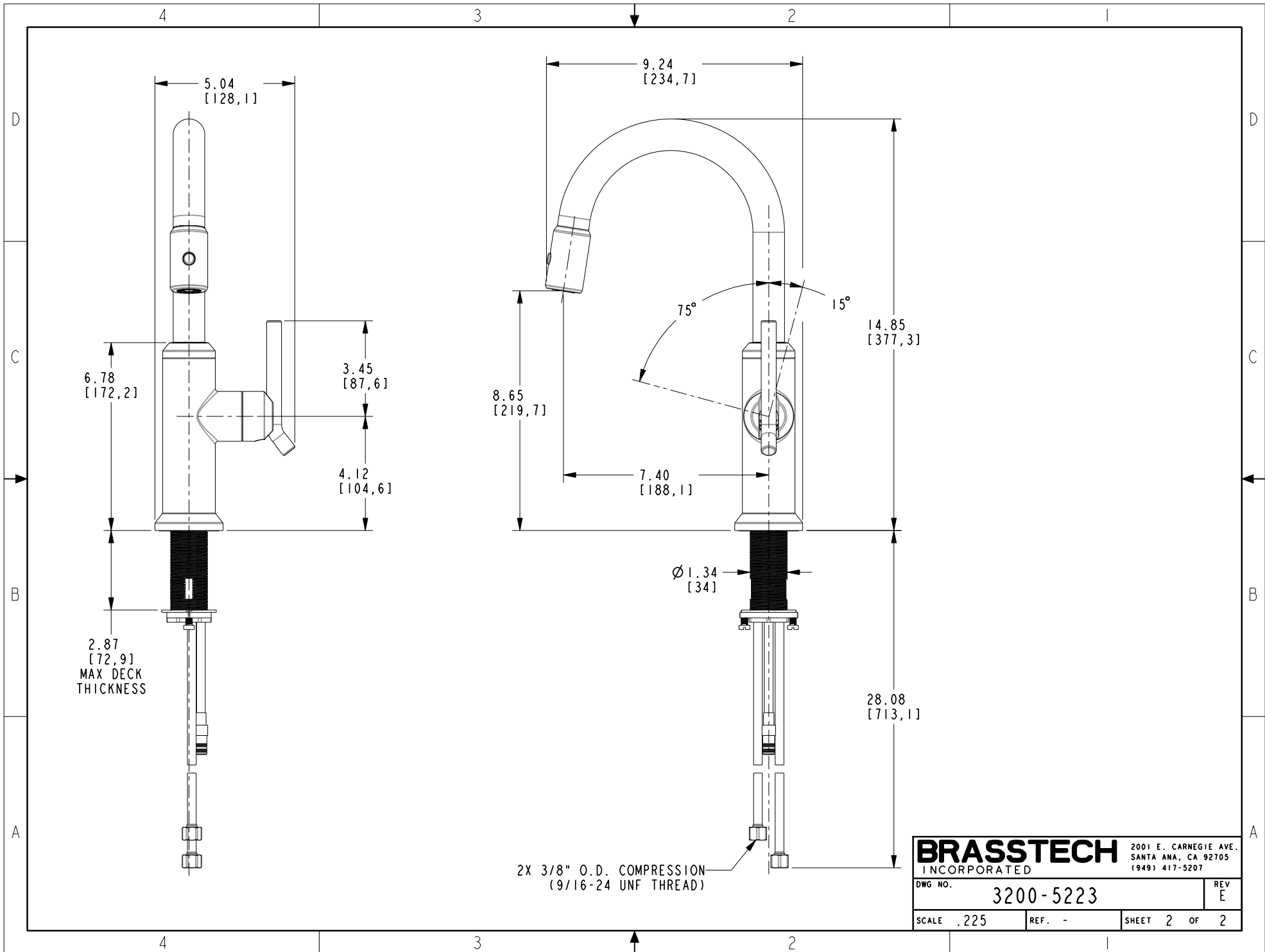
ZONE	REV	DESCRIPTION	DATE	APPROVED
-	E	EN-4213D	08/09/21	C.G.
-	D	EN-4300s	03/29/21	R.S.
-	C	EN-4167	06/10/20	JMR
-	B	EN-3931b	09/24/19	J.M.
-	A	EN-3413b	11/14/17	JM
-	-	EN-3076	03/15/17	JM

COPYRIGHT 2005 BRASSTECH, INC. THESE DRAWINGS AND THE DESIGNS DEPICTED HEREIN ARE THE PROPRIETARY PROPERTY OF BRASSTECH. ANY USE OR REPRODUCTION IS SUBJECT TO THE EXPRESS APPROVAL OF BRASSTECH. UNAUTHORIZED USE IS STRICTLY PROHIBITED. ALL RIGHTS RESERVED.

TESTING	ASSEMBLY	PLATING	POLISHING	MACHINING	TOOLING FIXTURE #
-	-	-	-	-	-
NEXT ASSY		USED ON		APPLICATION	
REMOVE ALL BURRS AND SHARP EDGES					

UNITS ARE: INCHES [MM]	
TOLERANCES ARE:	
FRACTIONS DECIMALS	ANGLES
±1/16"	±1°
.x ±.1 [2.5]	
.xx ±.06 [1.5]	
(X.XXX) DENOTES CRITICAL DIMS. ALL THREADS ARE CRITICAL	
DRAWN	JINSON 03/29/21
CHECKED	R.S. 03/29/21
APPROVED	R.S. 03/29/21

<b>BRASSTECH</b>		2001 CARNEGIE AVE. SANTA ANA, CA 92705 (949) 417-5207	
INCORPORATED			
PREP/BAR PULLDOWN			
DWG NO.		REV	
3200-5223		E	
SCALE	REF.	SHEET	OF
.200	-	1	2



Ø 1.34 [34]

28.08 [713,1]

<b>BRASSTECH</b> INCORPORATED		2001 E. CARNEGIE AVE. SANTA ANA, CA 92705 (949) 417-5207	
DWG NO. 3200-5223		REV E	
SCALE .225	REF. -	SHEET 2 OF 2	