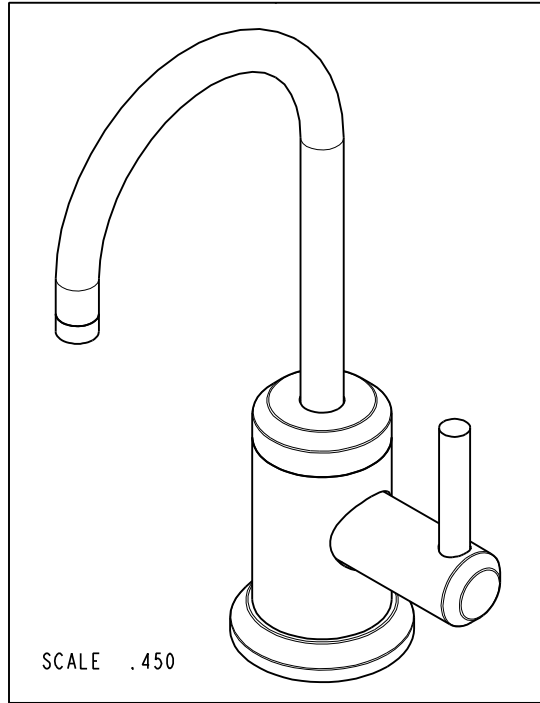


NOTES:

- (N1) 1. FIT / FORM / FUNCTION SHALL FOLLOW PS-E.008.
- 2. APPLY LOCTITE 680.
- 3. SLIT AND SHORTEN O-RING BY .13" TO .20" IN LENGTH BEFORE INSTALLING.
- 4. SLIT O-RING BEFORE INSTALLING.
- 5. INSTALLATION TORQUE: 8 -14 LB-FT.
- (N6) 6. WATER TEST WHOLE UNIT.
- 7. BAG 5-007 IN A SEPARATE BAG.
- 8. APPLY THIN FILM OF DOW CORNING III.
- 9. APPLY LOCTITE 242.
- 10. INSTALLATION TORQUE: 10 -14 LB-IN.



**BILL OF MATERIAL (CURRENT LEVEL)**

ITEM	PT/ASSY	DESCRIPTION	TYPE	QTY.
1	12649	ESCUTCHEON	PART	1
2	91772	O-RING, # 2-131, EP, 50 DURO - GREY	PART	1
3	50715	WATER DISP BODY (CONT.)	PART	1
4	50717	WATER DISP SPOUT RETAINER	PART	1
5	91023	O-RING, #2- 019, EPDM, 65-75 DURO, NSF 61	PART	1
6	5-052	SPOUT ASM	ASSEMBLY	1
7	91382	O-RING, #2- 012, TEFLON,	PART	1
8	91017	O-RING, #2- 012, EPDM, 65-75 DURO, NSF 61	PART	2
9	12650	BODY CAP	PART	1
10	91383	O-RING, #2- 014, TEFLON, NSF 61	PART	1
11	50714	WATER DISP. CAR.T HOLDER	PART	1
12	12651	WATER DISP HANDLE (CONT.)	PART	1
13	1-134	CARTR 3/8 HOT 1/4 TR	PART	1
14	12750	ADAPTER	PART	1
15	92477	SCRW, M4 X 16 SKT FLT HD SS	PART	1
16	92192	SCRW, 10-32 X 5/8 SKT HD CUP PT SS	PART	1
17	50721	WATER DISP LEVER (CONT.)	PART	1
18	50760	NIPPLE WATER DISP	PART	1
19	5-007	1/4 COMP KIT	ASSEMBLY	1
20	10661	MOUNTING STUD	PART	1
21	91063	MOUNTING CRESCENT GASKET	PART	1
22	10514	MOUNTING CRESCENT	PART	1
23	10516	MOUNTING NUT	PART	1

TESTING	-	-	-
ASSEMBLY	-	-	-
PLATING	-	-	-
POLISHING	-	NEXT ASSY	USED ON
MACHINING	-	APPLICATION	
TOOLING FIXTURE #		REMOVE ALL BURRS AND SHARP EDGES	

UNITS ARE: INCHES [MM] TOLERANCES ARE:		
FRACTIONS DECIMALS	ANGLES	
±1/16"	.X ±.1 [2.5]	±1°
	.XX ±.06 [1.5]	
(X.XXX) DENOTES CRITICAL DIMS. ALL THREADS ARE CRITICAL		
DRAWN	JINSON	02/08/19
CHECKED	C.G.	02/08/19
APPROVED	C.G.	02/08/19

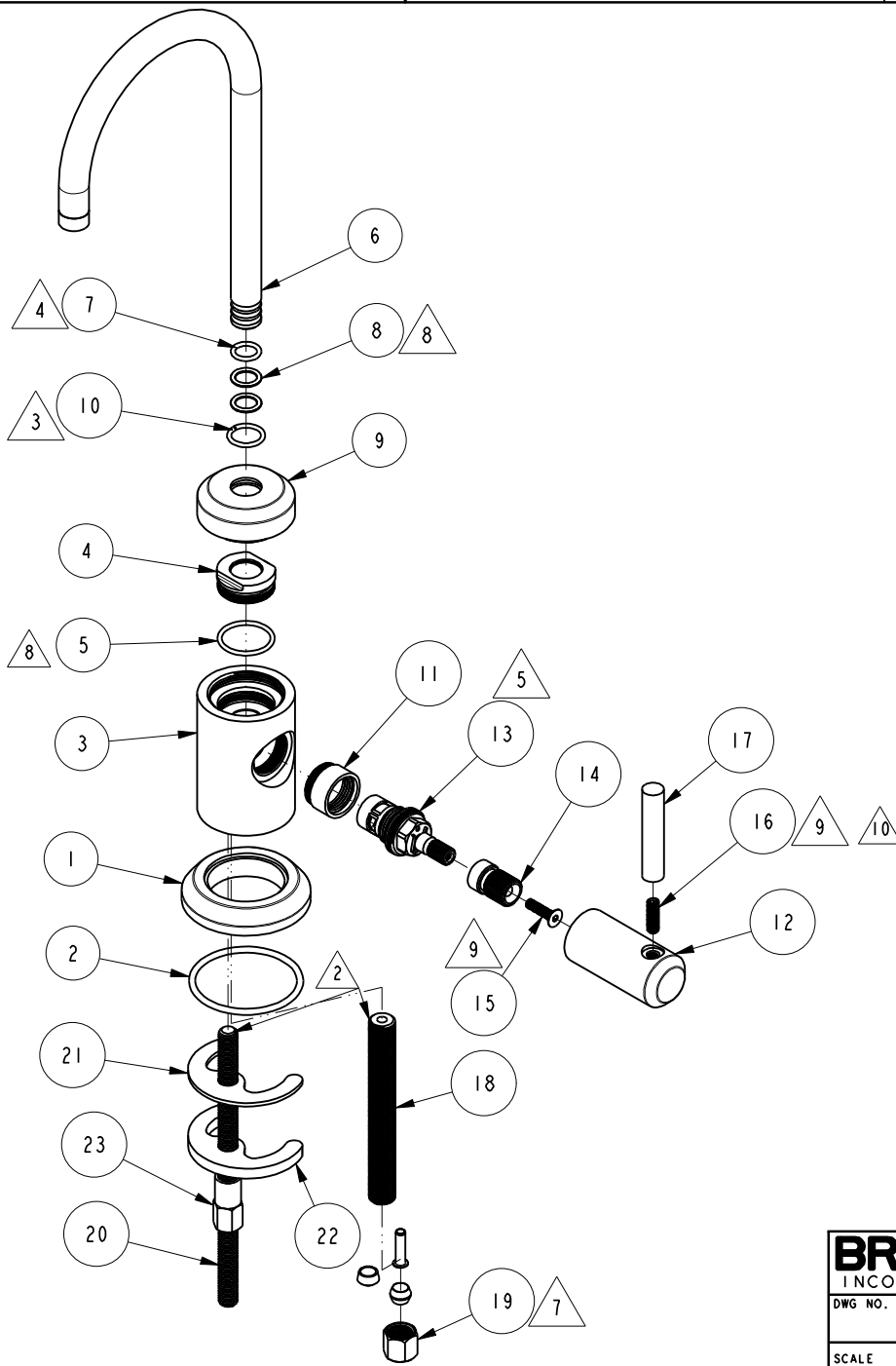
**BRASSTECH** 2001 CARNEGIE AVE.  
INCORPORATED SANTA ANA, CA 92705  
(949) 417-5207

**WATER DISPENSER - COLD**

ZONE	REV	DESCRIPTION	DATE	APPROVED
-	B	EN-3722	02/08/19	C.G.
-	A	EN-3693	08/29/18	J.M.
-	-	EN-3076	03/17/17	J.M.

COPYRIGHT 2005 BRASSTECH, INC.  
THESE DRAWINGS AND THE DESIGNS  
DEPICTED HEREIN ARE THE PROPRIETARY  
PROPERTY OF BRASSTECH. ANY USE  
OR REPRODUCTION IS SUBJECT TO  
THE EXPRESS APPROVAL OF BRASSTECH.  
UNAUTHORIZED USE IS STRICTLY  
PROHIBITED. ALL RIGHTS RESERVED.

DWG NO.	3200-5623	REV	B
SCALE	.250	REF.	-
SHEET	1	OF	3



<b>BRASSTECH</b>		2001 E. CARNEGIE AVE. SANTA ANA, CA 92705 (949) 417-5207
DWG NO.	3200-5623	REV B
SCALE .325	REF. -	SHEET 2 OF 3

