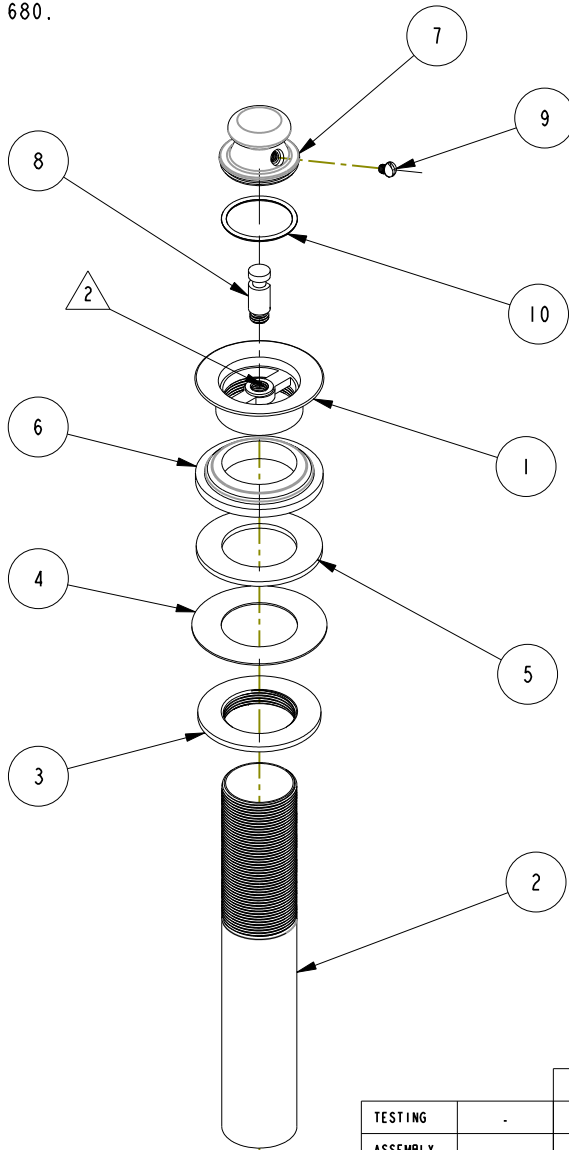


NOTES:

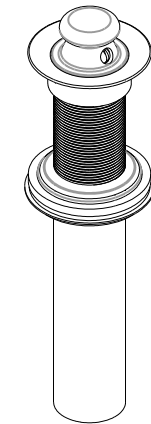
(N1) 1. TO INSPECT ASSEMBLY, FOLLOW FIRST ARTICLE AND IN PROCESS INSPECTION SHEET.

2 APPLY LOCTITE 680.



BILL OF MATERIAL (CURRENT LEVEL)

ITEM	PT/ASSY	DESCRIPTION	TYPE	QTY.
1	50333	FLANGE (320)	PART	1
2	50460	TAILPIECE FOR DRAIN ASSY	PART	1
3	10209	MNT'G NUT - DRAIN FL	PART	1
4	50029	WSHR, 1.34 ID X 2.25 OD X .05 THK.	PART	1
5	91196	WASHER - 1-1/4 ID X .094 THK	PART	1
6	91197	WASHER - 1-1/4 MOLDED	PART	1
7	50332	STOPPER (320)	PART	1
8	50334	POST (320)	PART	1
9	92072	SCRW, 8-32 X .219 SLT RND W/ Ø .250 HD PART	PART	1
10	91195	O-RING, 2 X 28MM ID, EPDM, 65-75 DURO	PART	1



SCALE .300

		-	-
TESTING	-	-	-
ASSEMBLY	-	-	-
PLATING	-	-	-
POLISHING	-	NEXT ASSY	USED ON
MACHINING	-	APPLICATION	
TOOLING FIXTURE #		REMOVE ALL BURRS AND SHARP EDGE	

UNITS ARE: INCHES [MM]  
TOLERANCES ARE:  
FRACTIONS DECIMALS ANGLES  
 $\pm 1/16"$   $.X \pm .1$  [2.5]  $\pm 1^\circ$   
 $.XX \pm .06$  [1.5]  
(X.XXX) DENOTES CRITICAL DIMS.  
ALL THREADS ARE CRITICAL

**BRASSTECH**  
INCORPORATED

2001 CARNEGIE AVE.  
SANTA ANA, CA 92705  
(949) 417-5207

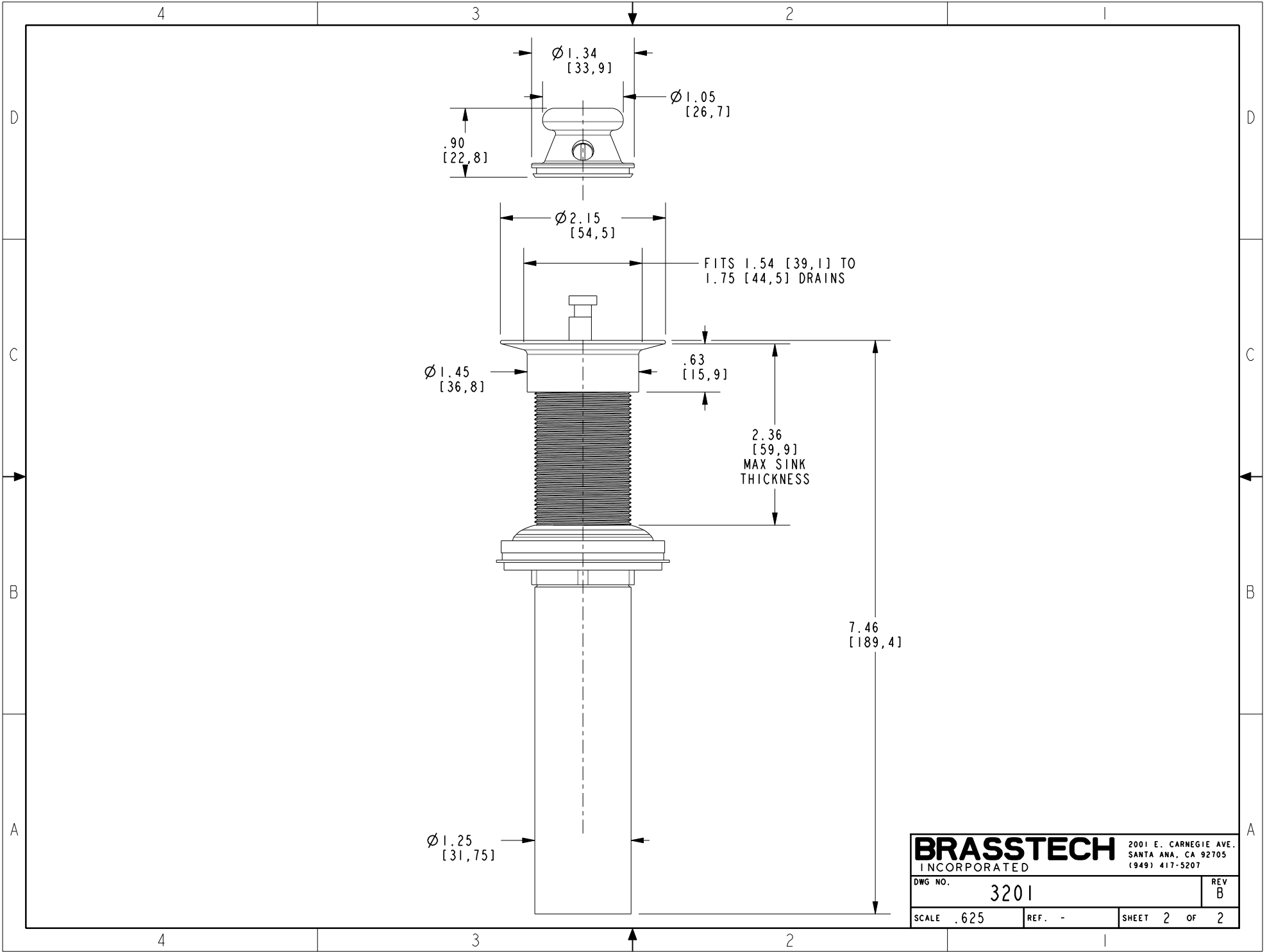
DRAIN - LIFT & TURN NO  
OVERFLOW

-	B	EN-430011	10/19/21	N.S.
-	A	EO-0646	01/30/06	-
ZONE	REV	DESCRIPTION	DATE	APPROVED

COPYRIGHT 2005 BRASSTECH, INC.  
THESE DRAWINGS AND THE DESIGNS  
DEPICTED HEREIN ARE THE PROPRIETARY  
PROPERTY OF BRASSTECH. ANY USE  
OR REPRODUCTION IS SUBJECT TO  
THE EXPRESS APPROVAL OF BRASSTECH.  
UNAUTHORIZED USE IS STRICTLY  
PROHIBITED. ALL RIGHTS RESERVED.

DRAWN	NMS	10/19/21
CHECKED	N. SANTOS	10/19/21
APPROVED	N. SANTOS	10/19/21

DWG NO.	3201	REV	B
SCALE	.313	REF.	-
SHEET	1	OF	2



<b>BRASSTECH</b>		2001 E. CARNEGIE AVE. SANTA ANA, CA 92705 (949) 417-5207	
INCORPORATED			
DWG NO.	3201		REV B
SCALE .625	REF. -	SHEET 2	OF 2