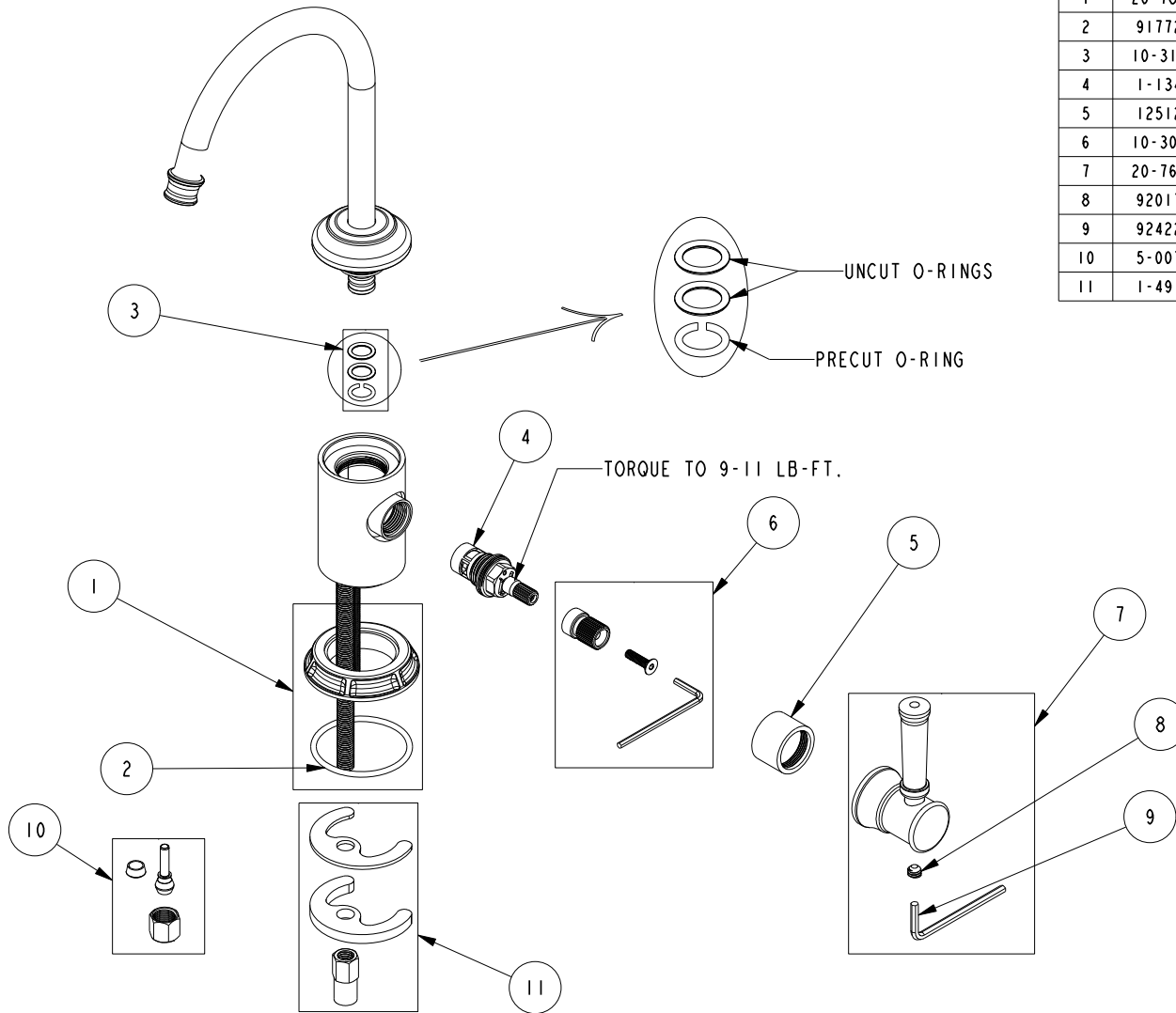


REPLACEMENT PARTS

| ITEM | PT/ASSY | SPECIFY FINISH | DESCRIPTION |
|------|---------|----------------|--------------------------------------|
| 1 | 20-789 | YES | ESCUTCHEON ASM |
| 2 | 91772 | | O-RING, # 2-131, EP, 50 DURO - GREY |
| 3 | 10-310 | | WATER DISPENSER SPOUT O-RING KIT |
| 4 | 1-134 | | CARTR 3/8 HOT 1/4 TR |
| 5 | 12512 | YES | BONNET |
| 6 | 10-306 | | CARTRIDGE STEM ADAPTER KIT |
| 7 | 20-766 | YES | HANDLE LEVER ASM |
| 8 | 92017 | | SCRW, 1/4-20 X 3/16 SKT HD CUP PT SS |
| 9 | 92422 | | HEX KEY, 1/8" ALLOY STEEL |
| 10 | 5-007 | | 1/4 COMP KIT |
| 11 | 1-491 | | SPOUT MOUNTING KIT |



WATER DISPENSER - COLD
3210-5623

REV M EN-4713 03/26/24

NEWPORT BRASS.

t: 949.417.5207 | www.newportbrass.com