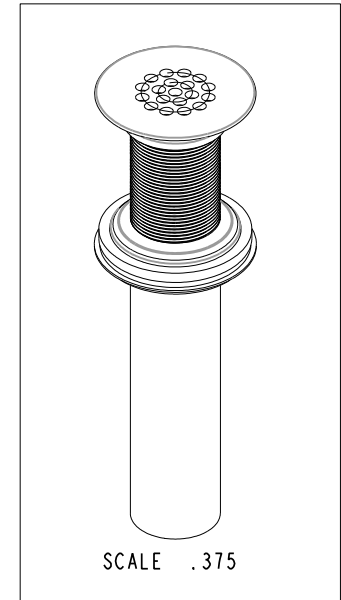
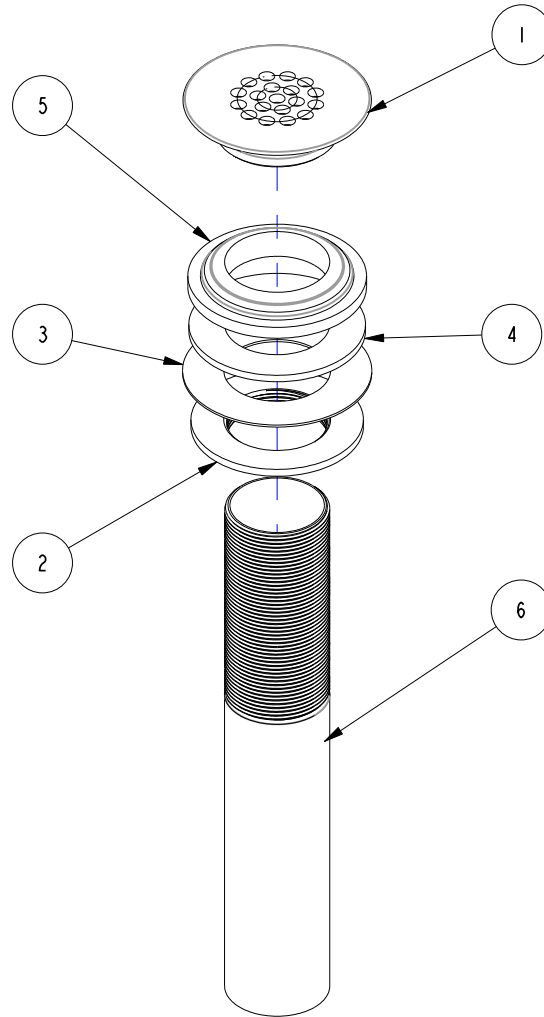


NOTES:

(NI) 1. TO INSPECT ASSEMBLY, FOLLOW FIRST ARTICLE AND IN PROCESS INSPECTION SHEET.

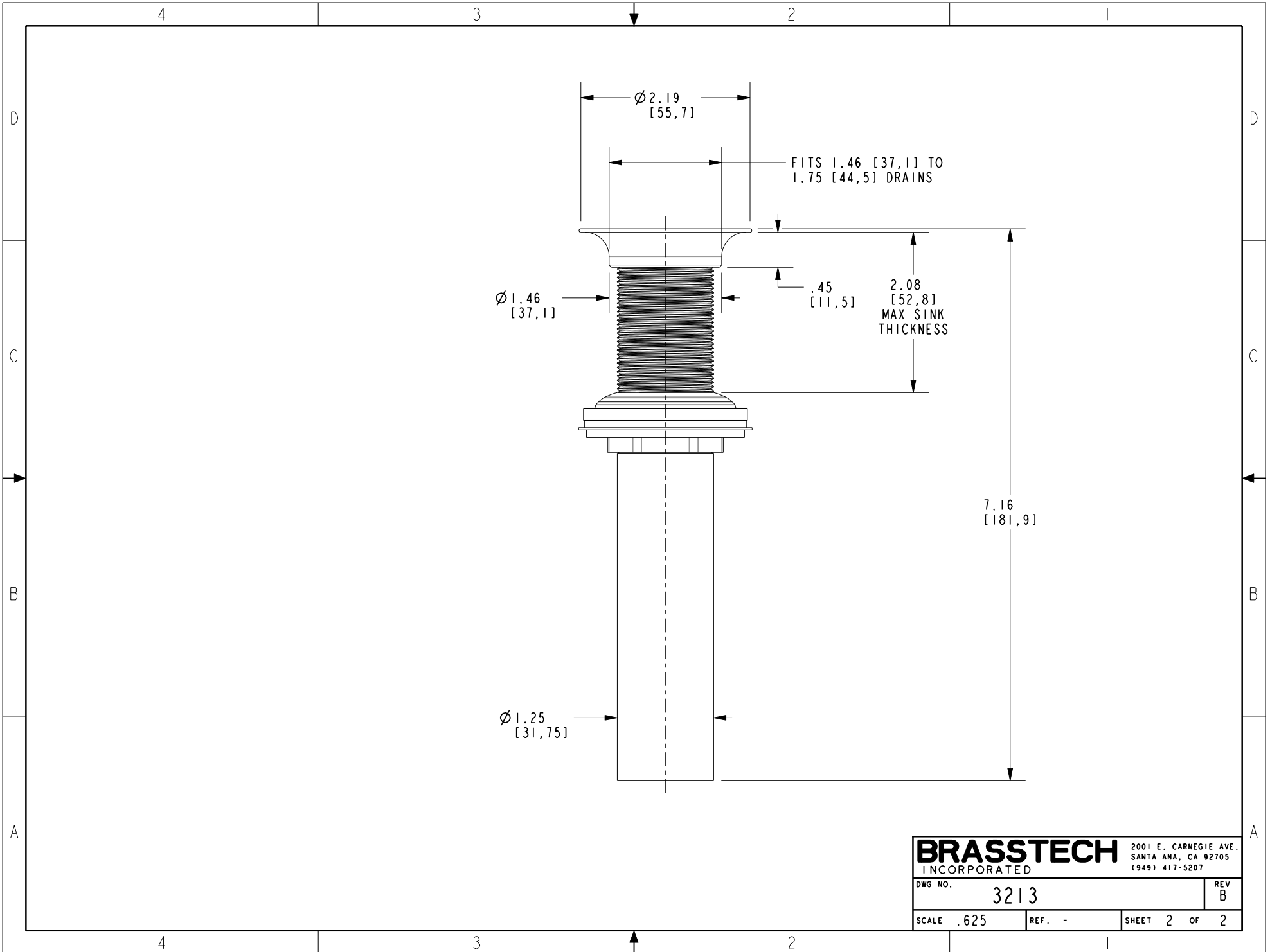
**BILL OF MATERIAL (CURRENT LEVEL)**

| ITEM | PT/ASSY | DESCRIPTION                        | TYPE | QTY. |
|------|---------|------------------------------------|------|------|
| 1    | 50459   | DRAIN GRID BODY                    | PART | 1    |
| 2    | 10209   | MNT'G NUT - DRAIN FL               | PART | 1    |
| 3    | 50029   | WSHR, 1.34 ID X 2.25 OD X .05 THK. | PART | 1    |
| 4    | 91196   | WASHER - 1-1/4 ID X .094 THK       | PART | 1    |
| 5    | 91197   | WASHER - 1-1/4 MOLDED              | PART | 1    |
| 6    | 50460   | TAILPIECE FOR DRAIN ASSY           | PART | 1    |



|      |     |             |          |          |  |                                  |             |   |   |
|------|-----|-------------|----------|----------|--|----------------------------------|-------------|---|---|
|      |     |             |          |          | UNITS ARE: INCHES [MM]<br>TOLERANCES ARE:<br>FRACTIONS DECIMALS ANGLES<br>$\pm 1/16"$ $.x \pm .1 [2.5]$ $\pm 1^\circ$<br>$.xx \pm .06 [1.5]$ |                                  |             | <b>BRASSTECH</b> 2001 CARNEGIE AVE.<br>INCORPORATED SANTA ANA, CA 92705<br>(949) 417-5207 |   |
|      |     |             |          |          | (X.XXX) DENOTES CRITICAL DIMS.<br>ALL THREADS ARE CRITICAL   |                                  |             |   |   |
| -    | B   | EN-430011   | 10/22/21 | N.S.     | TESTING  | -                                | -           | -   | DWG NO. <b>3213</b><br>SCALE .438 REF. - SHEET 1 OF 2     |
| -    | A   | EO-0646     | 01/30/06 | -        | ASSEMBLY   | -                                | -           | -   |   |
| -    | -   | RELEASED    | PRE '95  | -        | PLATING  | -                                | -           | -   |   |
| ZONE | REV | DESCRIPTION | DATE     | APPROVED | POLISHING  | -                                | NEXT ASSY   | USED ON   |   |
|      |     |             |          |          | MACHINING  | -                                | APPLICATION |   |   |
|      |     |             |          |          | TOOLING FIXTURE #  | REMOVE ALL BURRS AND SHARP EDGES |             |   | CHECKED W. SANTOS 10/22/21<br>APPROVED W. SANTOS 10/22/21 |

COPYRIGHT 2005 BRASSTECH, INC. THESE DRAWINGS AND THE DESIGNS DEPICTED HEREIN ARE THE PROPRIETARY PROPERTY OF BRASSTECH. ANY USE OR REPRODUCTION IS SUBJECT TO THE EXPRESS APPROVAL OF BRASSTECH. UNAUTHORIZED USE IS STRICTLY PROHIBITED. ALL RIGHTS RESERVED.



|                  |      |                       |        |
|------------------|------|-----------------------|--------|
| <b>BRASSTECH</b> |      | 2001 E. CARNEGIE AVE. |        |
| INCORPORATED     |      | SANTA ANA, CA 92705   |        |
|                  |      | (949) 417-5207        |        |
| DWG NO.          | 3213 | REV                   | B      |
| SCALE            | .625 | REF.                  | -      |
|                  |      | SHEET                 | 2 OF 2 |