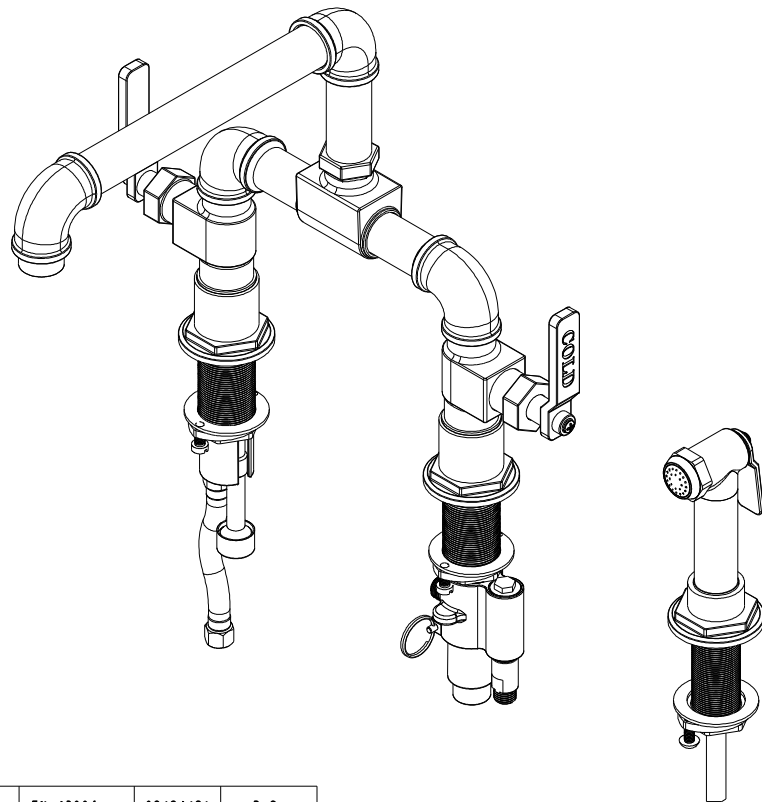


NOTES:

1. TO INSPECT ASSEMBLY, FOLLOW FIRST ARTICLE AND IN PROCESS INSPECTION SHEET.

- 2 APPLY LIGHT FILM OF DOW CORNING 111 SILICONE COMPOUND.
- 3 APPLY LOCTITE 242.
- 4 INSTALLATION TORQUE: 8-14 LB-FT.
- 5 APPLY LOCTITE 680.
- 6 APPLY TORQUE 15-18 IN-LBS.



BILL OF MATERIAL (CURRENT LEVEL)

ITEM	PT/ASSY	DESCRIPTION	TYPE	QTY.
1	20-344	ESCUTCHEON ASM	ASSEMBLY	2
2	13223	BODY, HOT	PART	1
3	20-470	BRAZED, BODY-COLD	ASSEMBLY	1
4	91144	O-RING, #2-024, EPDM, 65-75 DURO	PART	2
5	12947	TEE JOINT BODY	PART	1
6	92013	SCRW, 10-24 X 1/4 SKT HD FLT PT SS	PART	2
7	1-256	MOUNTING KIT	ASSEMBLY	2
8	91288	O-RING, #2-119, EPDM, 65-75 DURO	PART	2
9	20-342	SPOUT ASM	ASSEMBLY	1
10	20-332	AERATOR ASM	ASSEMBLY	1
11	91408	O-RING, #2-023, EPDM, 65-75 DURO	PART	2
12	91024	O-RING, #2- 022, EPDM, 65-75 DURO	PART	3
13	1-763	BLOCK ASSY, COLD SUPPLY	ASSEMBLY	1
14	12897	QUICK-RELEASE PIN	PART	1
15	1-436	CARTR 3/8 COLD 1/4 TR	PART	1
16	1-437	CARTR 3/8 HOT 1/4 TR	PART	1
17	12910	BONNET	PART	2
18	12750	ADAPTER	PART	2
19	12908	HANDLE LEVER - COLD	PART	1
20	92539	SCRW, M4X22 FLAT HD SOCKET HD CAP	PART	2
21	20-333	DECO NUT ASM	ASSEMBLY	2
22	12909	HANDLE LEVER - HOT	PART	1
23	3220-5703	KITCHEN SPRAY HEAD	ASSEMBLY	1
24	13236	CHECK HOUSING	PART	1
25	5-050	CHECK VALVE, NEOPERL DW10, WHITE	PART	1
26	91414	WSHR, .328 ID X .475 OD X .075 THK, FLT, RUBBER	PART	1
27	13205	HOSE PROTECTOR, SINGLE	PART	1
28	13206	DOUBLE HOSE SLEEVE	PART	1
29	92431	SCRW, 4-40 X 1/4 SKT HD CAP SS	PART	4
30	13354	M10 CONNECTOR (LONG)	PART	1
31	91255	O-RING, #2- 011, EPDM, 65-75 DURO, NSF-61	PART	3
32	13355	M10 CONNECTOR (SHORT)	PART	1
33	13356	M10 CONNECTOR	PART	1
34	11188	FLEXIBLE HOSE, 3/8 X 3/8 COMPRESSION, 16"	ASSEMBLY	1
35	13361	3/8" THREAD CAP	PART	2

-	E	EN-4300f	02/24/21	R.S.
-	D	EN-4062	01/06/20	J.M.
-	C	EN-4019	11/18/19	J.M.
-	B	EN-3896o	11/04/19	J.M.
-	A	EN-3873o	08/22/19	J.M.
-	-	EN-3443	09/18/18	J.M.
ZONE	REV	DESCRIPTION	DATE	APPROVED

COPYRIGHT 2005 BRASSTECH, INC. THESE DRAWINGS AND THE DESIGNS DEPICTED HEREIN ARE THE PROPRIETARY PROPERTY OF BRASSTECH. ANY USE OR REPRODUCTION IS SUBJECT TO THE EXPRESS APPROVAL OF BRASSTECH. UNAUTHORIZED USE IS STRICTLY PROHIBITED. ALL RIGHTS RESERVED.

TESTING	-	-	-
ASSEMBLY	-	-	-
PLATING	-	-	-
POLISHING	-	NEXT ASSY	USED ON
MACHINING	-	APPLICATION	
TOOLING FIXTURE #	REMOVE ALL BURRS AND SHARP EDGES		

UNITS ARE: INCHES [MM]
TOLERANCES ARE:
FRACTIONS DECIMALS ANGLES
±1/16" .X ±.1 [2.5] ±1°
.XX ±.06 [1.5]

(X.XXX) DENOTES CRITICAL DIMS.
ALL THREADS ARE CRITICAL

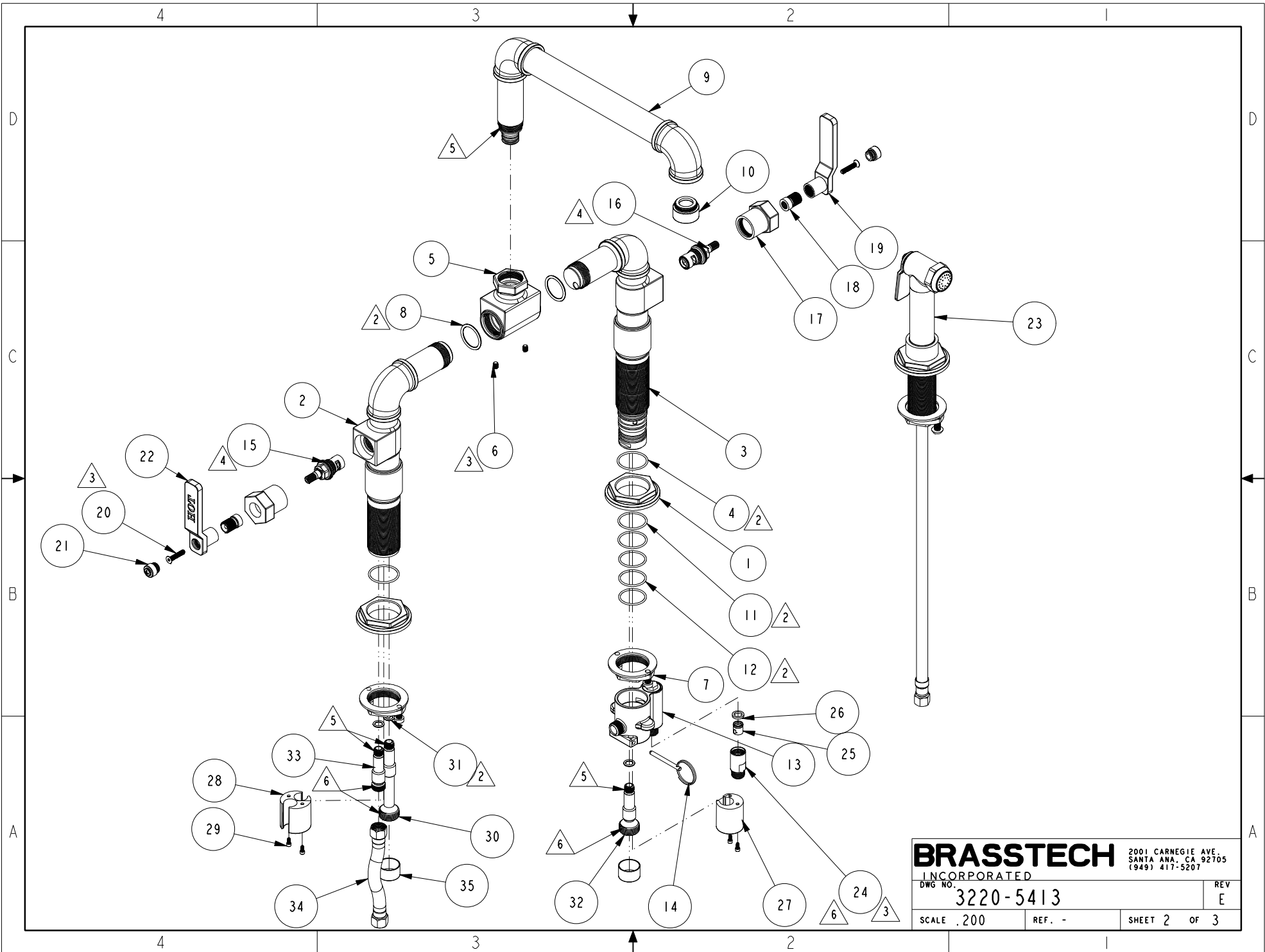
DRAWN	JIMSON	09/18/18
CHECKED	J.M.	09/18/18
APPROVED	J.M.	09/18/18

BRASSTECH 2001 CARNEGIE AVE.
INCORPORATED SANTA ANA, CA 92705
(949) 417-5207

**KITCHEN BRIDGE FAUCET W/
SPRAY**

DWG NO. **3220-5413** REV **E**

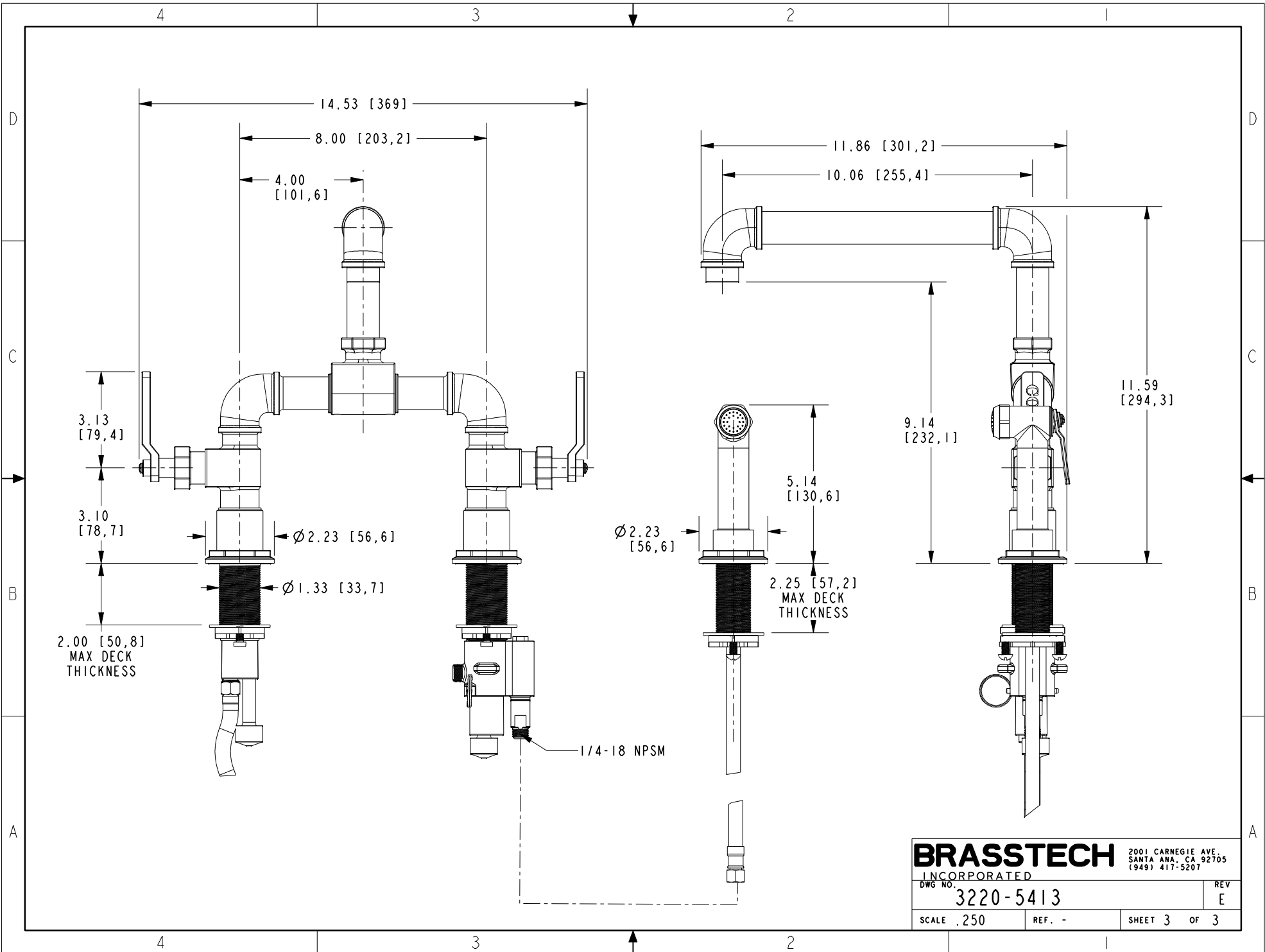
SCALE .225 REF. - SHEET | OF 3



BRASSTECH 2001 CARNEGIE AVE.
 INCORPORATED SANTA ANA, CA 92705
 (949) 417-5207

DWG NO. 3220-5413 REV E

SCALE .200 REF. - SHEET 2 OF 3



BRASSTECH 2001 CARNEGIE AVE.
 INCORPORATED SANTA ANA, CA 92705
 (949) 417-5207

DWG NO.	3220-5413	REV	E
SCALE	.250	REF.	-
SHEET 3		OF 3	