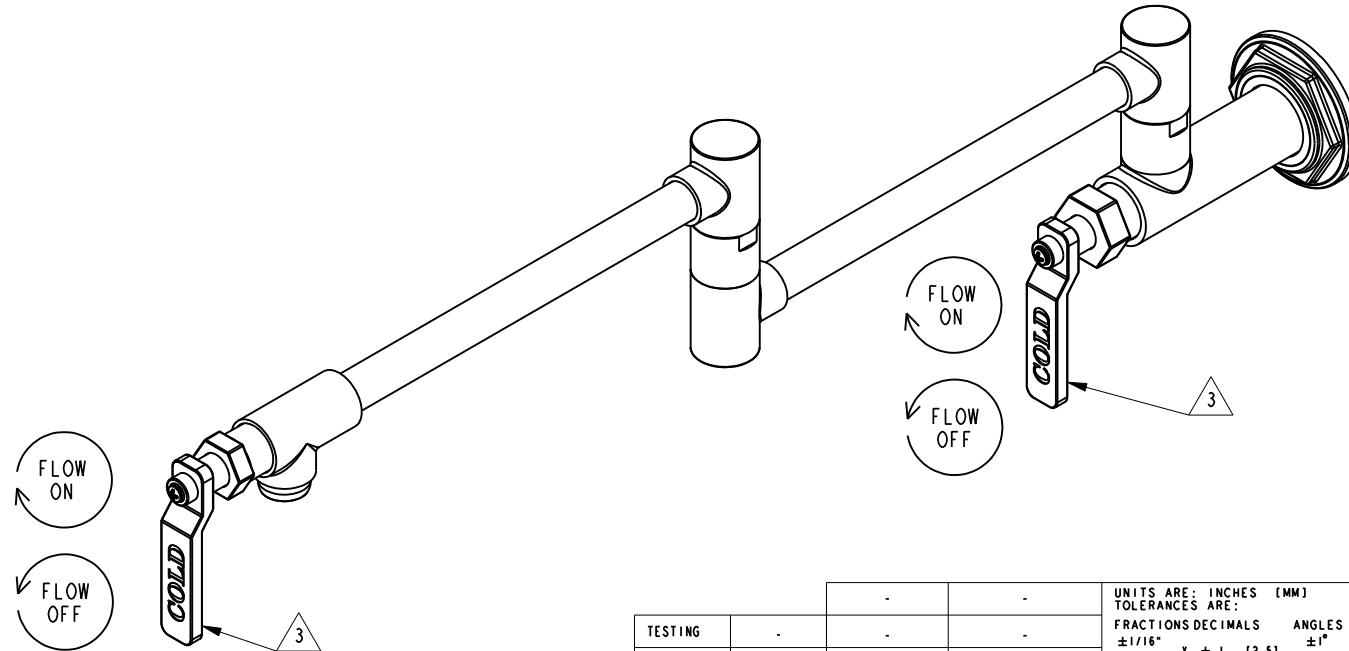


NOTES:

- (NI) 1. FIT / FORM / FUNCTION SHALL FOLLOW PS-E.008.
- 2. PACK THESE ITEMS IN A PLASTIC BAG.
- 3. HANDLE IN CLOSE POSITION.
- 4. INSTALLATION TORQUE 11-14 LB-FT.
- 5. INSTALLATION TORQUE 4-6 LB-FT.
- 6. APPLY LOCTITE 680.
- 7. APPLY LOCTITE 242

BILL OF MATERIAL (CURRENT LEVEL)

ITEM	PT/ASSY	DESCRIPTION	TYPE	QTY.
1	12922	VALVE BODY, WALL-END	PART	1
2	11309	FLANGE, MOUNTING	PART	1
3	92223	SCRW, #8 X 2-1/2 PHL FLT HD SS	PART	4
4	92231	SCRW, 1/4-20 X 1/4 SKT HD CUP PT SS	PART	1
5	2-553	LOWER ARM ASM, CONTEMP	ASSEMBLY	1
6	20-337	UPPER ARM ASM, CONTEMP	ASSEMBLY	1
7	1-325	W/S CARTRIDGE FRICTION - COLD	PART	1
8	1-436	CARTR 3/8 COLD 1/4 TR	PART	1
9	12919	FLANGE	PART	1
10	92232	SCRW, 6-32 X 1/8 SKT HD FTL PT SS	PART	1
11	12920	BONNET, TIP-END	PART	1
12	12070	HANDLE ADAPTER, SHORT	PART	2
13	12908	HANDLE LEVER - COLD	PART	2
14	92426	SCRW, M4 X 12 PHL FLT HD SS	PART	2
15	20-333	DECO NUT ASM	ASSEMBLY	2
16	12921	BONNET, WALL-END	PART	1



TESTING	-	-	-	UNITS ARE: INCHES [MM]
ASSEMBLY	-	-	-	TOLERANCES ARE:
PLATING	-	-	-	FRACTIONS DECIMALS ANGLES
POLISHING	-	NEXT ASSY	USED ON	±1/16" .X ±.1 [2.5] ±1°
MACHINING	-			.XX ±.06 [1.5]
TOOLING FIXTURE #				(X.XXX) DENOTES CRITICAL DIMS.
				ALL THREADS ARE CRITICAL
				DRAWN JINSON 09/17/18
				CHECKED J.M. 09/17/18
				APPROVED J.M. 09/17/18

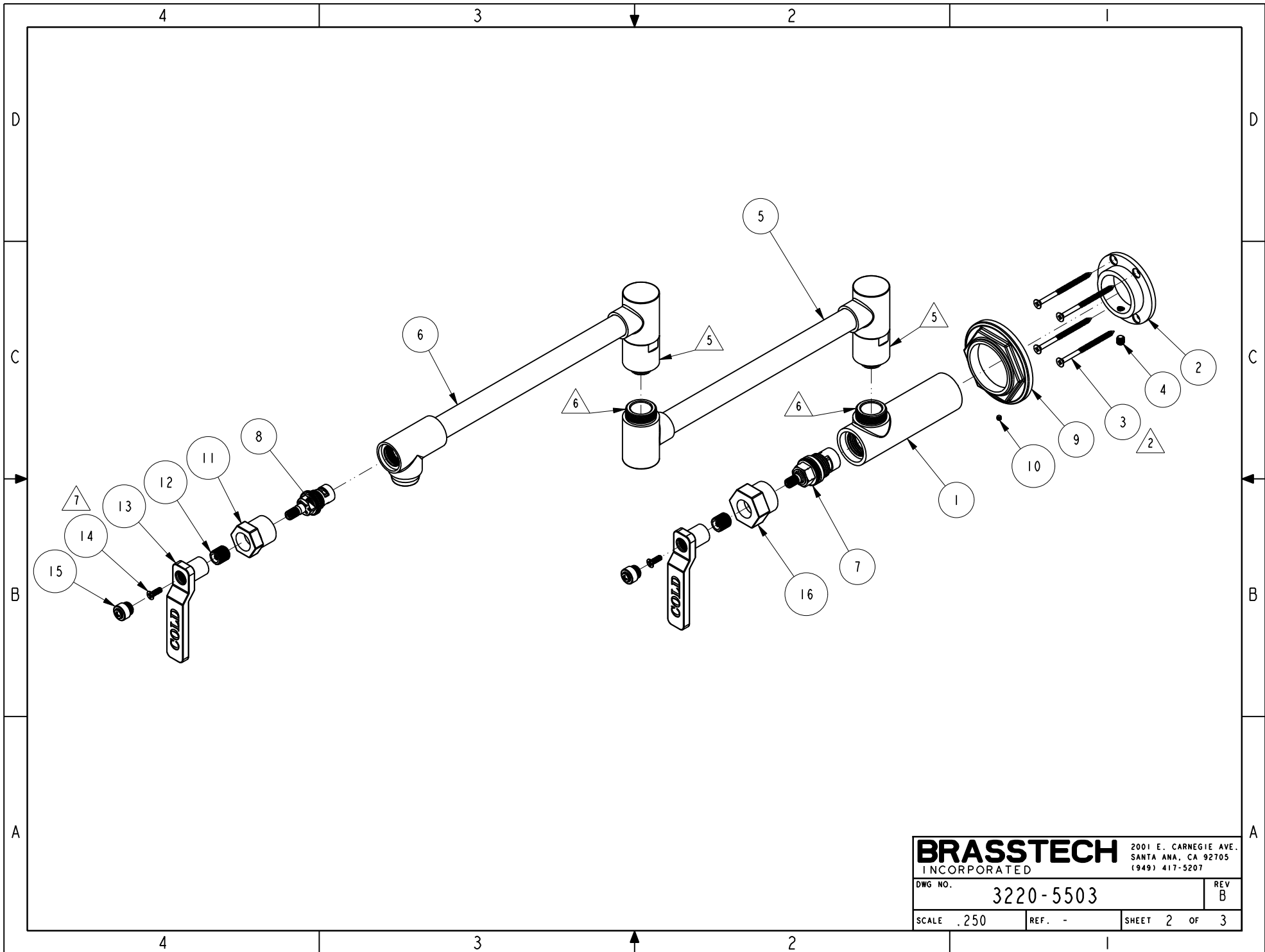
BRASSTECH 2001 CARNEGIE AVE.
INCORPORATED SANTA ANA, CA 92705
(949) 417-5207

POT FILLER

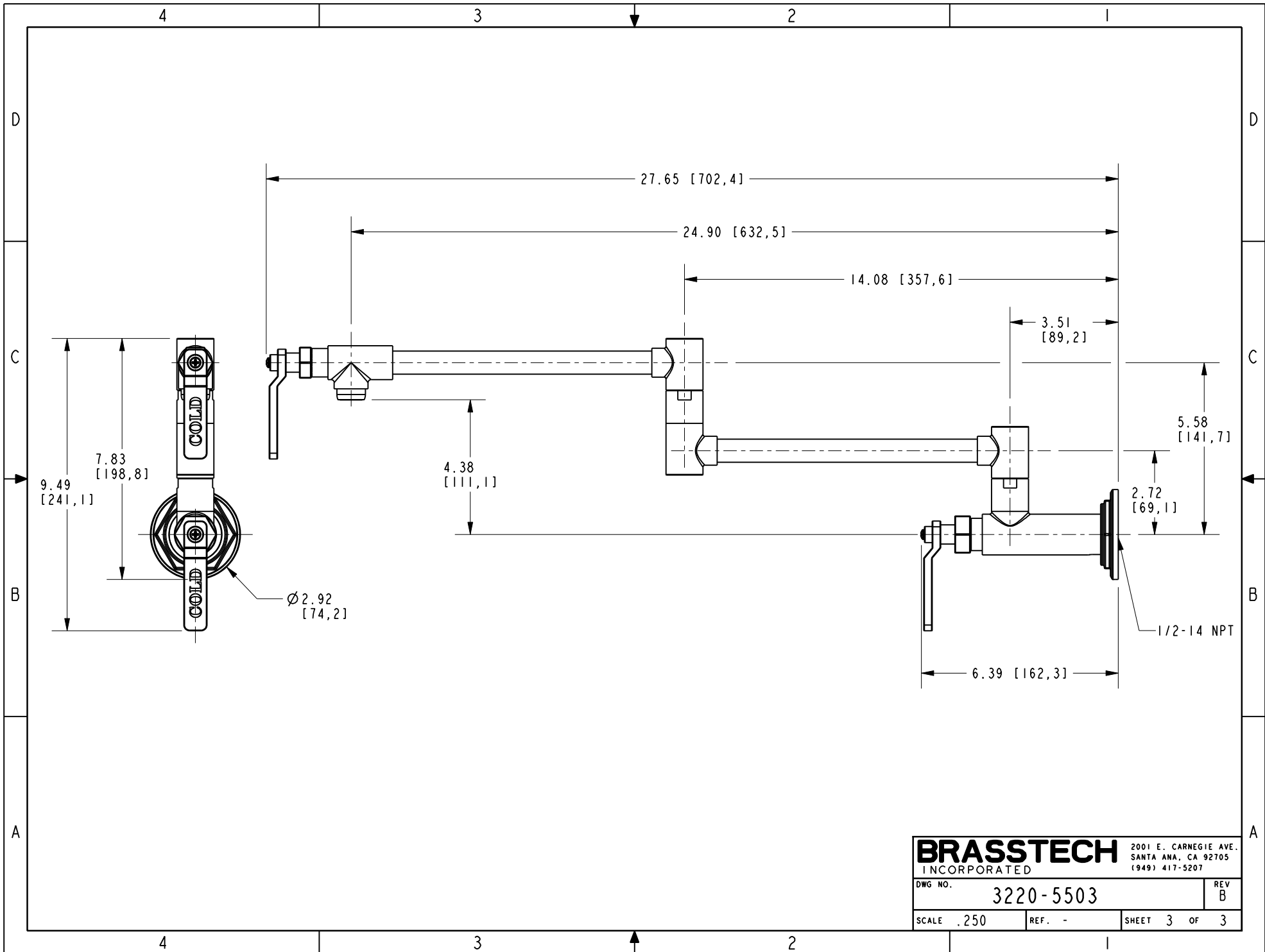
DWG NO. 3220-5503 REV B

SCALE .300 REF. - SHEET 1 OF 3

-	B	EN-4062	01/06/20	J.M.	COPYRIGHT 2005 BRASSTECH, INC. THESE DRAWINGS AND THE DESIGNS DEPICTED HEREIN ARE THE PROPRIETARY PROPERTY OF BRASSTECH. ANY USE OR REPRODUCTION IS SUBJECT TO THE EXPRESS APPROVAL OF BRASSTECH. UNAUTHORIZED USE IS STRICTLY PROHIBITED. ALL RIGHTS RESERVED.
-	A	EN-3886	06/05/19	J.M.	
-	-	EN-3443	09/17/18	J.M.	
ZONE	REV	DESCRIPTION	DATE	APPROVED	



BRASSTECH		2001 E. CARNEGIE AVE.	
INCORPORATED		SANTA ANA, CA 92705	
DWG NO. 3220-5503		REV B	
SCALE .250	REF. -	SHEET 2 OF 3	



BRASSTECH		2001 E. CARNEGIE AVE.
INCORPORATED		SANTA ANA, CA 92705
		(949) 417-5207
DWG NO.	3220-5503	REV B
SCALE .250	REF. -	SHEET 3 OF 3