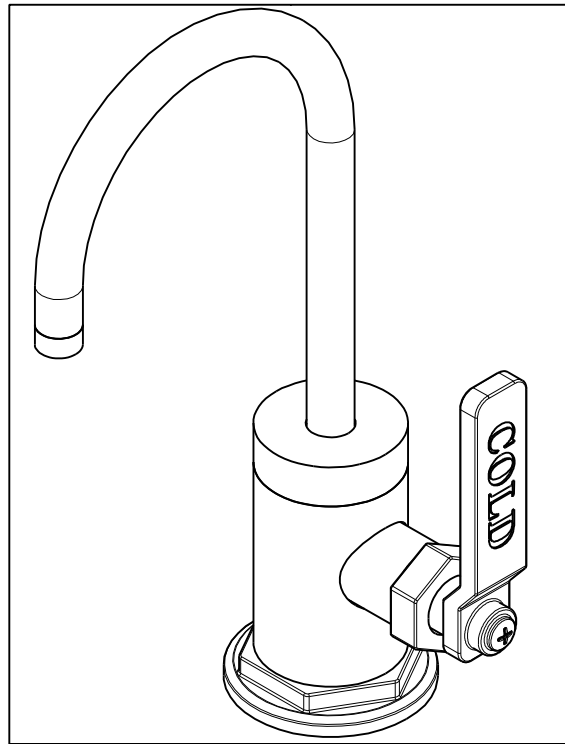


NOTES:

1. TO INSPECT ASSEMBLY, FOLLOW FIRST ARTICLE AND IN PROCESS INSPECTION SHEET.
2. APPLY LOCTITE 680.
3. SLIT AND SHORTEN O-RING BY .13" TO .20" IN LENGTH BEFORE INSTALLING.
4. SLIT O-RING BEFORE INSTALLING.
5. INSTALLATION TORQUE: 8 -14 LB-FT.
6. WATER TEST WHOLE UNIT.
7. BAG 5-007 IN A SEPARATE BAG.
8. APPLY THIN FILM OF DOW CORNING 111.
9. APPLY LOCTITE 242.



**BILL OF MATERIAL (CURRENT LEVEL)**

ITEM	PT/ASSY	DESCRIPTION	TYPE	QTY.
1	20-338	ESCUTCHEON ASM	ASSEMBLY	1
2	50715	WATER DISP BODY (CONT.)	PART	1
3	50717	WATER DISP SPOUT RETAINER	PART	1
4	91023	O-RING, #2- 019, EPDM, 65-75 DURO, NSF 61	PART	1
5	5-052	SPOUT ASM	ASSEMBLY	1
6	91382	O-RING, #2- 012, TEFLON,	PART	1
7	91017	O-RING, #2- 012, EPDM, 65-75 DURO, NSF 61	PART	2
8	50716	WATER DISP BODY CAP (CONT.)	PART	1
9	91383	O-RING, #2- 014, TEFLON, NSF 61	PART	1
10	50714	WATER DISP. CAR.T HOLDER	PART	1
11	1-134	CARTR 3/8 HOT 1/4 TR	PART	1
12	12750	ADAPTER	PART	1
13	50760	NIPPLE WATER DISP	PART	1
14	5-007	1/4 COMP KIT	ASSEMBLY	1
15	10661	MOUNTING STUD	PART	1
16	91063	MOUNTING CRESCENT GASKET	PART	1
17	10514	MOUNTING CRESCENT	PART	1
18	10516	MOUNTING NUT	PART	1
19	92862	SCRW, M4 X 18 SKT FLT HD SS	PART	1
20	12926	BONNET DECO	PART	1
21	20-339	HANDLE ASM, COLD	ASSEMBLY	1

UNITS ARE: INCHES [MM]  
 TOLERANCES ARE:  
 FRACTIONS DECIMALS ANGLES  
 ±1/16" .X ±.1 [2.5] ±1°  
 .XX ±.06 [1.5]

(X.XXX) DENOTES CRITICAL DIMS.  
 ALL THREADS ARE CRITICAL

DRAWN JINSON 07/22/21  
 CHECKED R.S. 07/22/21  
 APPROVED R.S. 07/22/21

**BRASSTECH** 2001 CARNEGIE AVE.  
 INCORPORATED SANTA ANA, CA 92705  
 (949) 417-5207

**WATER DISPENSER - COLD**

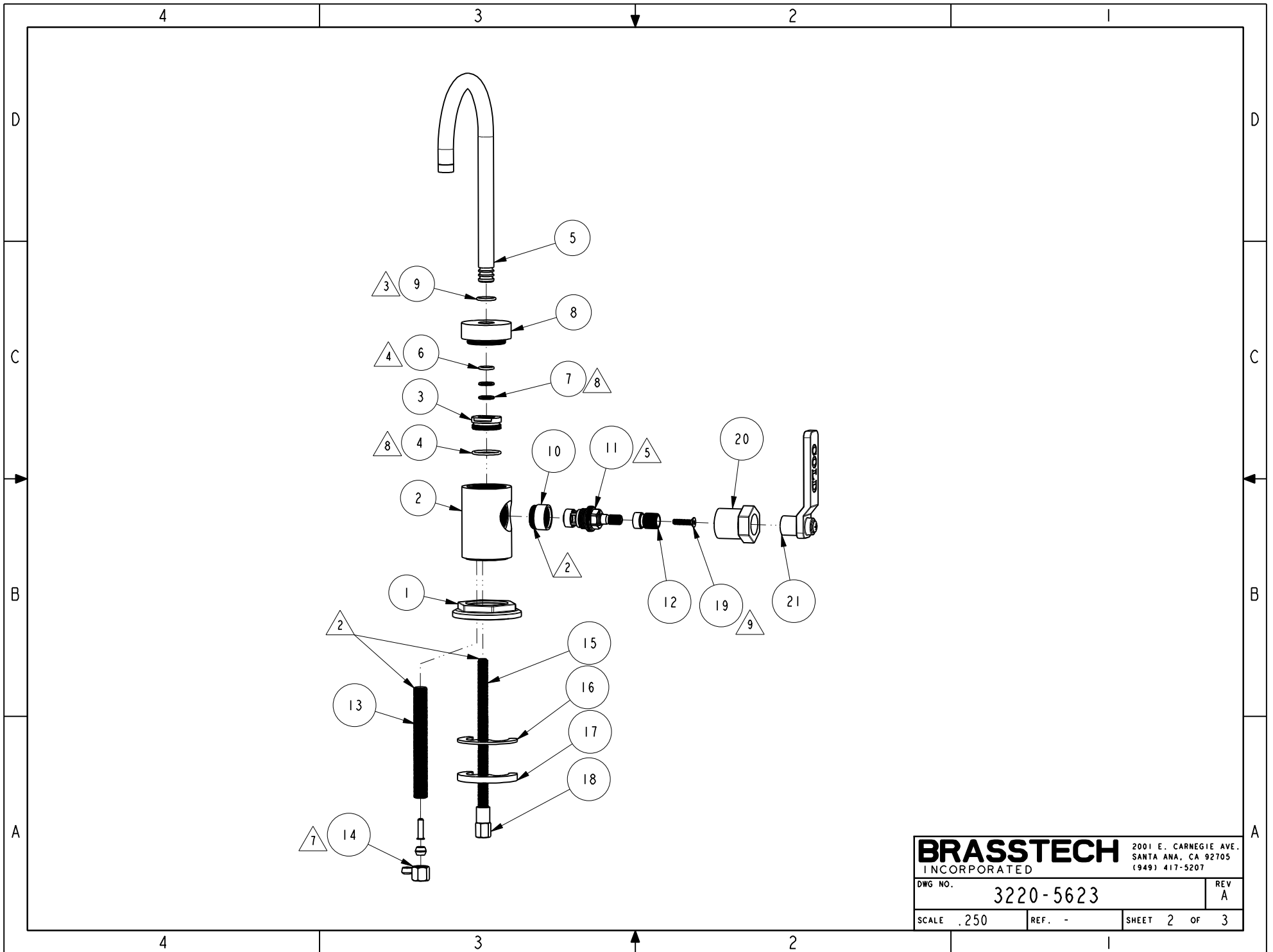
DWG NO. **3220-5623** REV **A**

SCALE .500 REF. - SHEET 1 OF 3

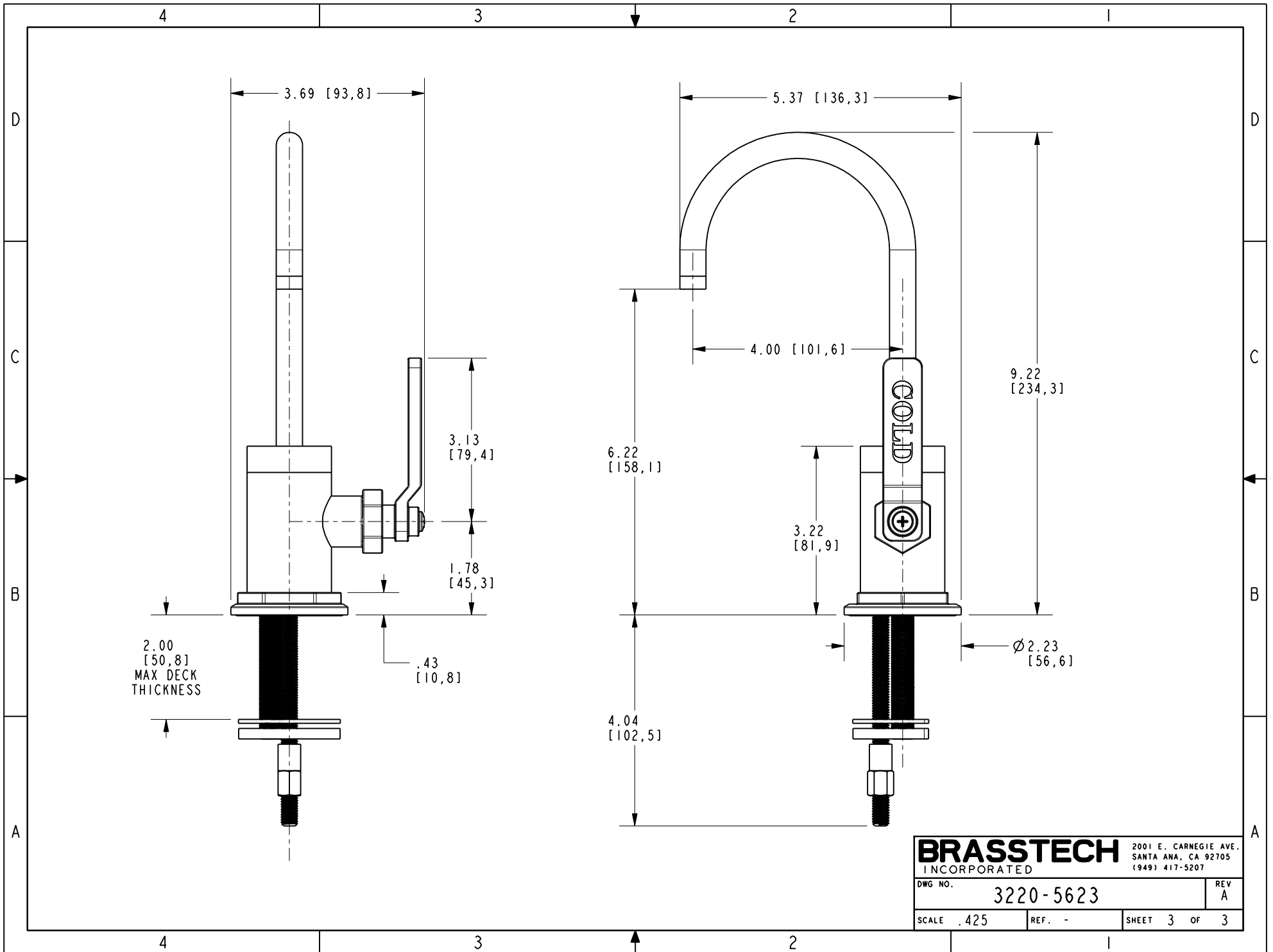
ZONE	REV	DESCRIPTION	DATE	APPROVED
-	A	EN-4300jj	07/22/21	R.S.
-	-	EN-3443	09/17/18	J.M.

COPYRIGHT 2005 BRASSTECH, INC.  
 THESE DRAWINGS AND THE DESIGNS  
 DEPICTED HEREIN ARE THE PROPRIETARY  
 PROPERTY OF BRASSTECH. ANY USE  
 OR REPRODUCTION IS SUBJECT TO  
 THE EXPRESS APPROVAL OF BRASSTECH.  
 UNAUTHORIZED USE IS STRICTLY  
 PROHIBITED. ALL RIGHTS RESERVED.

TESTING	ASSEMBLY	PLATING	POLISHING	MACHINING	TOOLING FIXTURE #	APPLICATION
-	-	-	-	-		
						REMOVE ALL BURRS AND SHARP EDGES



<b>BRASSTECH</b>		2001 E. CARNEGIE AVE. SANTA ANA, CA 92705 (949) 417-5207
DWG NO.	3220-5623	REV A
SCALE .250	REF. -	SHEET 2 OF 3



<b>BRASSTECH</b>		2001 E. CARNEGIE AVE. SANTA ANA, CA 92705 (949) 417-5207	
DWG NO.	3220-5623	REV	A
SCALE	.425	REF.	-
SHEET 3		OF 3	