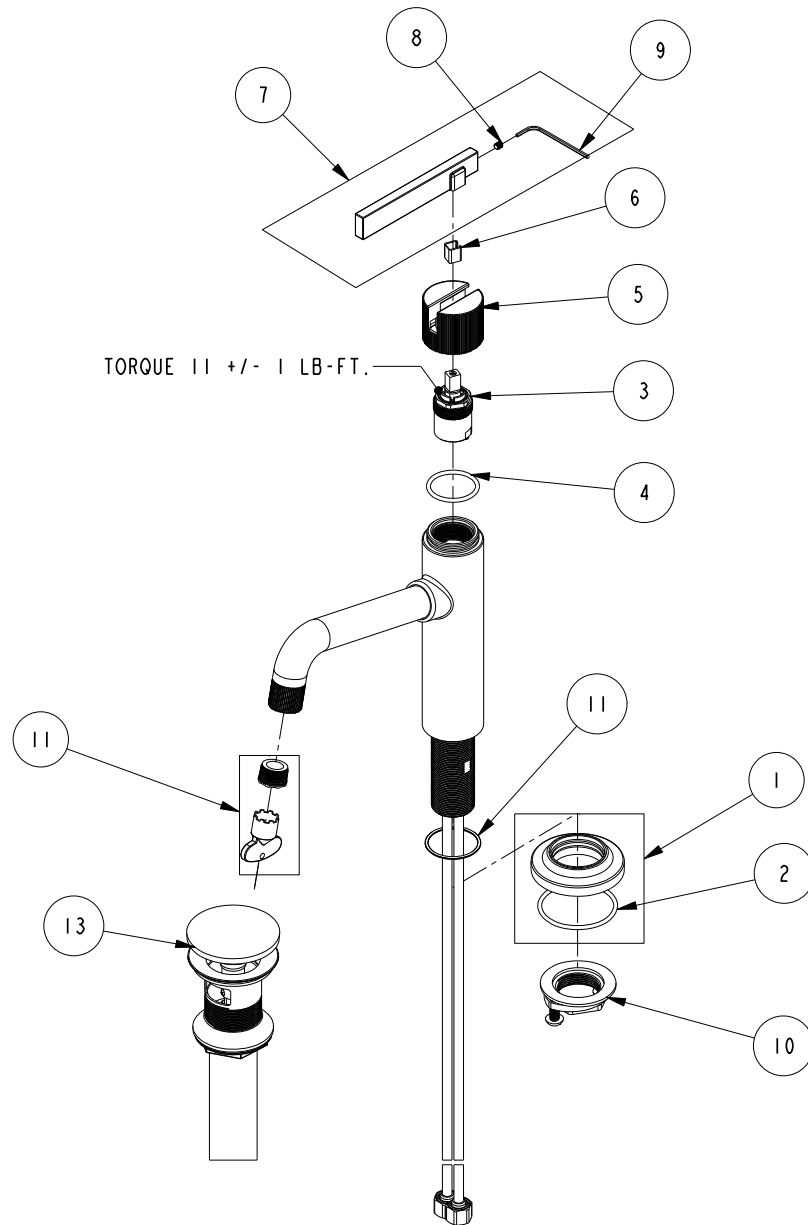


# REPLACEMENT PARTS



ITEM	PT/ASSY	SPECIFY FINISH	DESCRIPTION
1	20-714	YES	ESCUTCHEON ASM.
2	91756		O-RING #2-134, EP, 50 DURO - GREY
3	1-371		CARTRIDGE
4	91505		O-RING, #2-123, EPDM, 65-75 DURO
5	13886	YES	HANDLE HUB
6	91534		CARTRIDGE STEM INSERT
7	20-723	YES	LEVER HANDLE ASM.
8	92001		SCRW, 8-32 X 3/16 SKT HD FLT PT SS
9	10192		HEX KEY TOOL, #8 5/64
10	1-393		1-1/8 18 UNEF MOUNTING KIT
11	91764		O-RING, #2-027, EP, 50 DURO - GREY
12	1-492		AERATOR 1.2 GPM WITH KEY
13	330	YES	DRAIN, PUSH DOWN, W/ OVERFLOW

Single Hole Lavatory Faucet  
3233

REV B EN-4816 05/15/24

**NEWPORT BRASS.**

t: 949.417.5207 | www.newportbrass.com