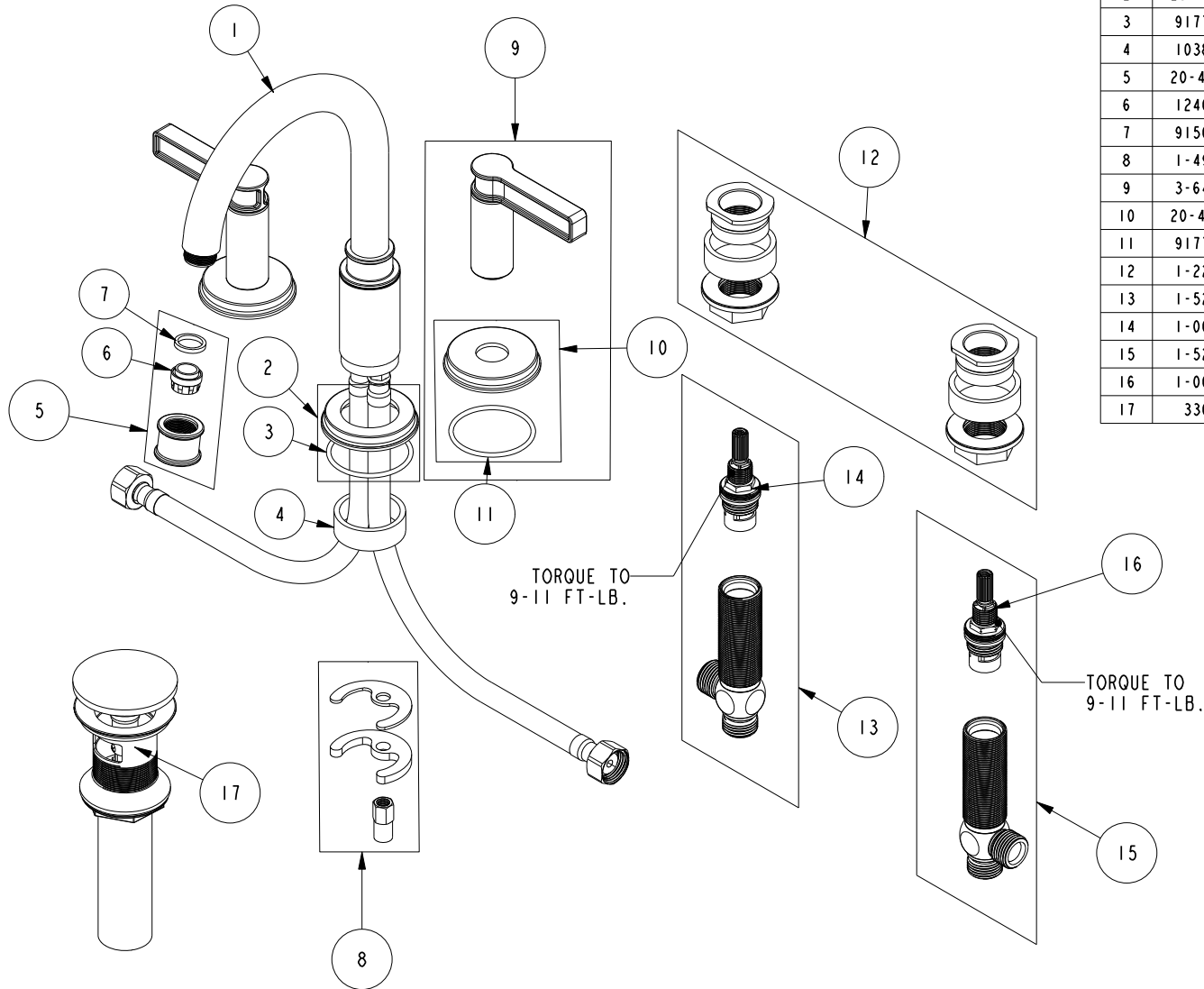


# REPLACEMENT PARTS



ITEM	PT/ASSY	SPECIFY FINISH	DESCRIPTION
1	3-787	YES	W/S SPOUT ASM
2	20-735	YES	ESCUTCHEON ASM
3	91773		O-RING, #2-133, 50 DURO
4	10382		QUICK CONNECT SPACER
5	20-442	YES	AERATOR ASM
6	12403		AERATOR INSERT, Jr. SIZE, 1.2 GPM
7	91500		GSKT, .578 ID X .728 OD X .102 THK EPDM
8	1-491		SPOUT MOUNTING KIT
9	3-648	YES	LEVER HANDLE W/ESC.
10	20-433	YES	ESCUTCHEON ASM
11	91773		O-RING, #2-133, 50 DURO
12	1-226		WIDESPREAD MOUNTING HARDWARE
13	1-527		W/S CART/BODY ASM (HOT)
14	1-002		W/S CARTRIDGE - HOT
15	1-526		W/S CART/BODY ASM (COLD)
16	1-001		W/S CARTRIDGE - COLD
17	330	YES	DRAIN, PUSH DOWN, W/ OVERFLOW

**WIDESPREAD FAUCET  
3270C**

REV B EN-4793 03/11/24

**NEWPORT BRASS.**

t: 949.417.5207 | www.newportbrass.com