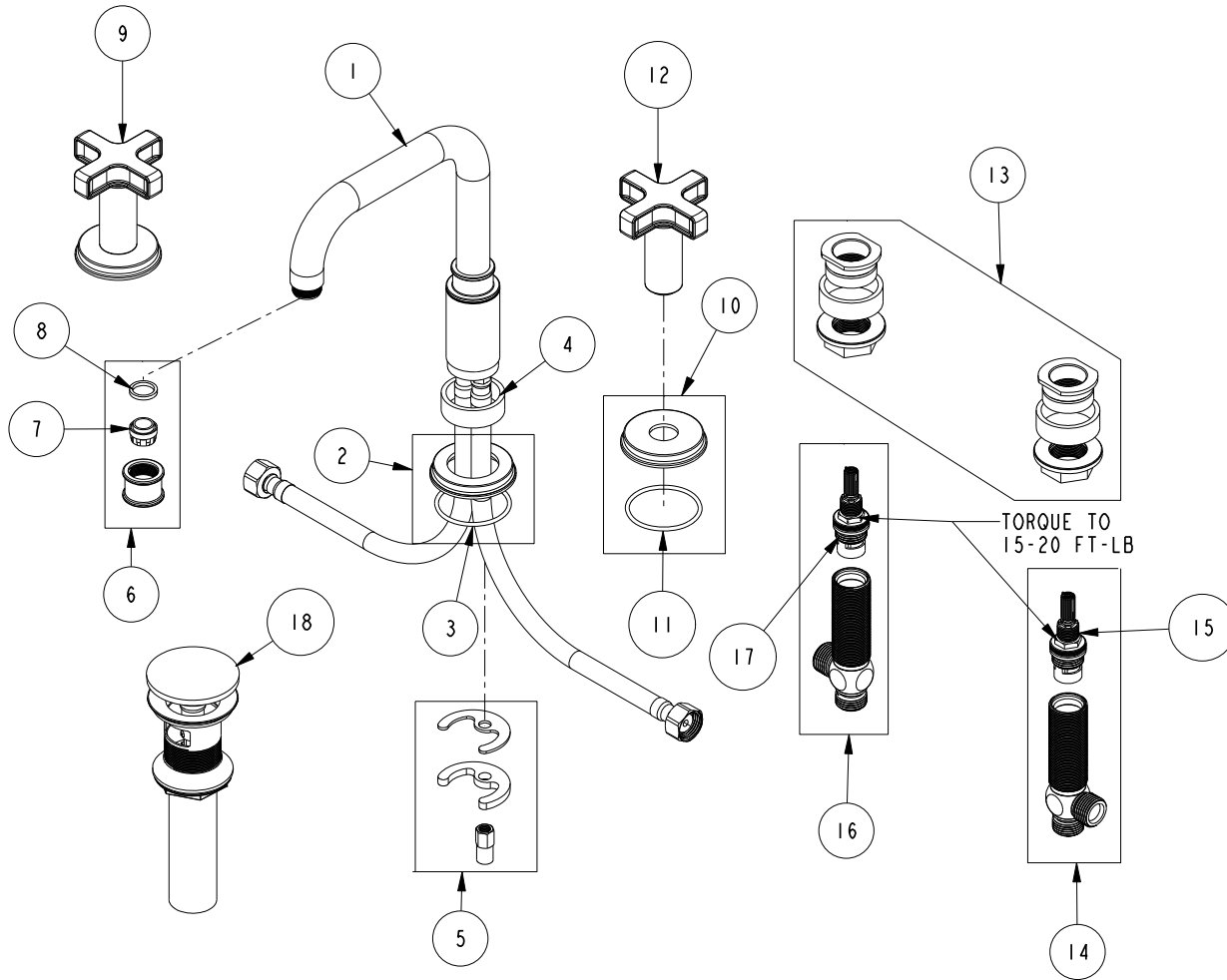


REPLACEMENT PARTS



| ITEM | PT/ASSY | SPECIFY FINISH | DESCRIPTION |
|------|---------|----------------|---|
| 1 | 3-634 | YES | W/S SPOUT ASM |
| 2 | 20-735 | YES | ESCUTCHEON ASM |
| 3 | 91773 | | O-RING, #2-133, 50 DURO |
| 4 | 10382 | | QUICK CONNECT SPACER |
| 5 | 1-491 | | SPOUT MOUNTING KIT |
| 6 | 20-442 | | AERATOR ASM |
| 7 | 12403 | | AERATOR INSERT, Jr. SIZE, 1.2 GPM |
| 8 | 91500 | | GSKT, .578 ID X .728 OD X .102 THK EPDM |
| 9 | 3-649 | YES | CROSS HANDLE W/ESC. |
| 10 | 20-433 | YES | ESCUTCHEON ASM |
| 11 | 91773 | | O-RING, #2-133, 50 DURO |
| 12 | 20-430 | YES | CROSS HANDLE ASM |
| 13 | 1-226 | | WIDESPREAD MOUNTING HARDWARE |
| 14 | 1-527 | | W/S CART/BODY ASM (HOT) |
| 15 | 1-002 | | W/S CARTRIDGE - HOT |
| 16 | 1-526 | | W/S CART/BODY ASM (COLD) |
| 17 | 1-001 | | W/S CARTRIDGE - COLD |
| 18 | 330 | YES | DRAIN, PUSH DOWN, W/ OVERFLOW |

**WIDESPREAD FAUCET
3280**

REV C EN-4585-2 03/07/23 APPROVED RS

NEWPORT BRASS.

t: 949.417.5207 | www.newportbrass.com