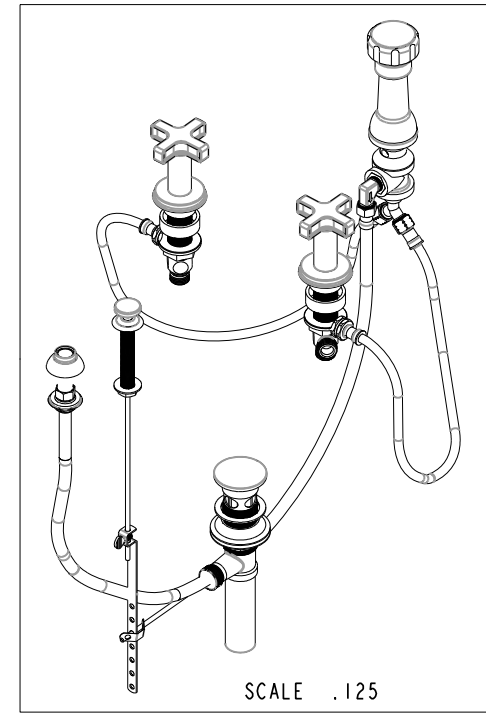
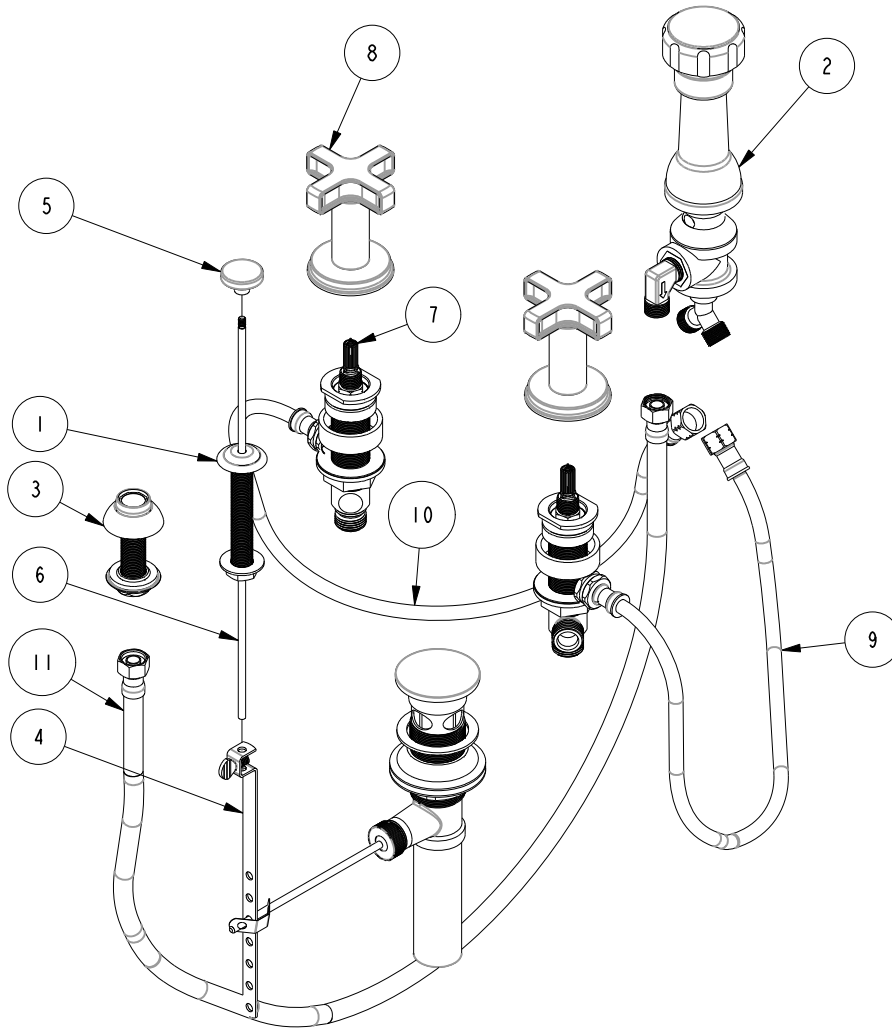


NOTES:

- (NI) 1. TO INSPECT ASSEMBLY, FOLLOW FIRST ARTICLE AND IN PROCESS INSPECTION SHEET.

BILL OF MATERIAL (CURRENT LEVEL)

| ITEM | PT/ASSY | DESCRIPTION | TYPE | QTY. |
|------|------------|---------------------------|----------|------|
| 1 | 2-159 | POP-UP ROD GUIDE ASSEMBLY | ASSEMBLY | 1 |
| 2 | 2-235 | BIDET DIVERTER / V. BRE | ASSEMBLY | 1 |
| 3 | 2-236 | DOUCHE SPRAY ASSEMBLY | ASSEMBLY | 1 |
| 4 | 325 | POP UP ASSEMBLY | ASSEMBLY | 1 |
| 5 | 80080 | POP UP KNOB, ROUND | PART | 1 |
| 6 | 10288 | 3/16" POP UP ROD | PART | 1 |
| 7 | 1-676 | W/S VALVE INSTALLATION | ASSEMBLY | 1 |
| 8 | 3-649 | CROSS HANDLE W/ESC. | ASSEMBLY | 2 |
| 9 | 10612.FIG1 | FLEX HOSE 10 IN. | PART | 1 |
| 10 | 10612.FIG2 | FLEX HOSE 10 IN. | PART | 1 |
| 11 | 10613.FIG1 | FLEX HOSE 23 IN. | PART | 1 |



| | | | |
|-------------------|----------------------------------|-------------|---------|
| TESTING | - | - | - |
| ASSEMBLY | - | - | - |
| PLATING | - | - | - |
| POLISHING | - | NEXT ASSY | USED ON |
| MACHINING | - | APPLICATION | |
| TOOLING FIXTURE # | REMOVE ALL BURRS AND SHARP EDGES | | |

| | | | |
|---|----------------|-----------------|--|
| UNITS ARE: INCHES [MM] | | TOLERANCES ARE: | |
| FRACTIONS | DECIMALS | ANGLES | |
| ±1/16" | .X ±.1 [2.5] | ±1° | |
| | .XX ±.06 [1.5] | | |
| (X.XXX) DENOTES CRITICAL DIMS. ALL THREADS ARE CRITICAL | | | |
| DRAWN | JINSON | 03/12/19 | |
| CHECKED | J.M. | 03/12/19 | |
| APPROVED | J.M. | 03/12/19 | |

BRASSTECH INCORPORATED
 2001 CARNEGIE AVE.
 SANTA ANA, CA 92705
 (949) 417-5207

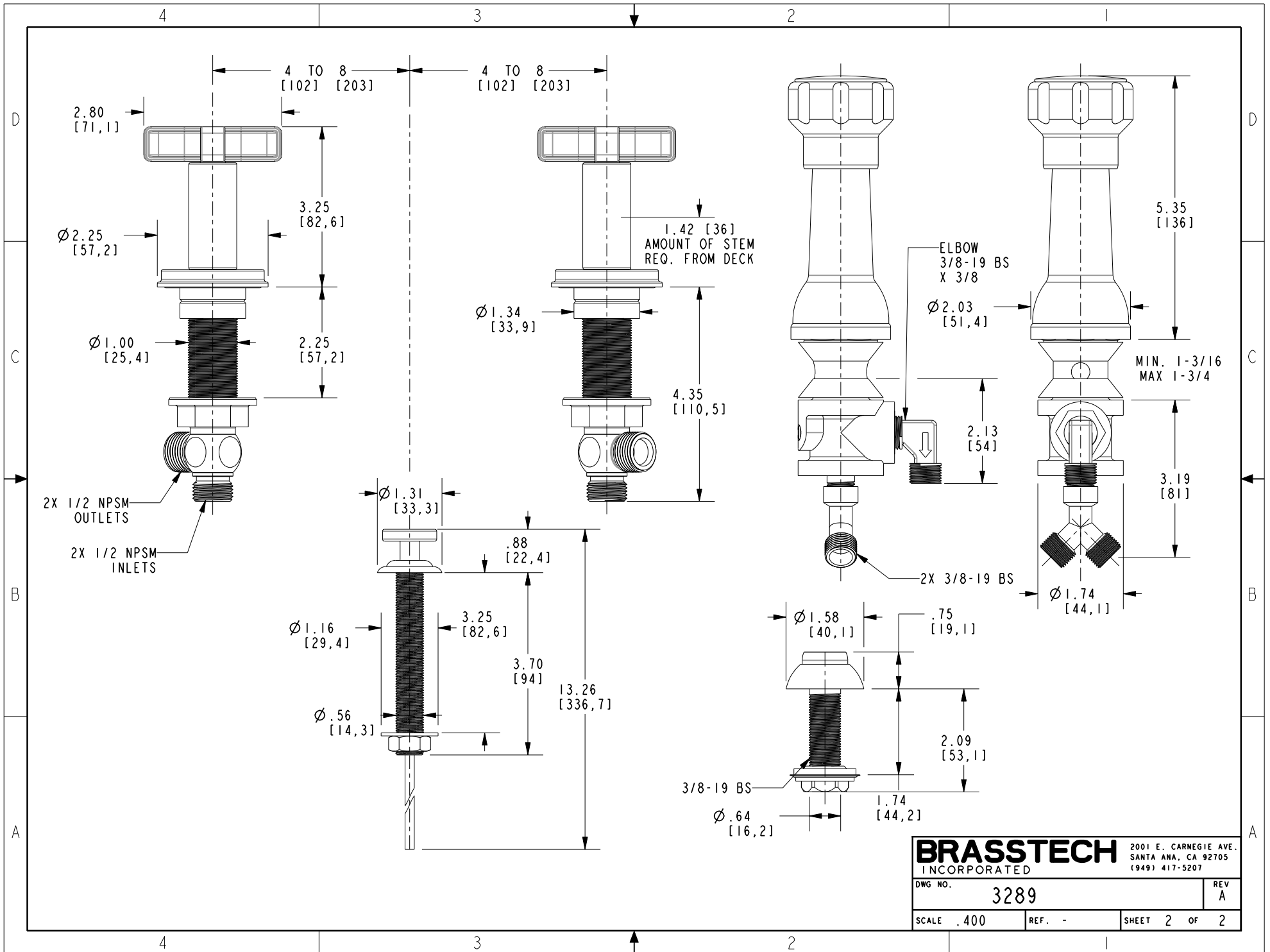
BIDET SET

DWG NO. **3289** REV **A**

SCALE .200 REF. - SHEET 1 OF 2

COPYRIGHT 2005 BRASSTECH, INC. THESE DRAWINGS AND THE DESIGNS DEPICTED HEREIN ARE THE PROPRIETARY PROPERTY OF BRASSTECH. ANY USE OR REPRODUCTION IS SUBJECT TO THE EXPRESS APPROVAL OF BRASSTECH. UNAUTHORIZED USE IS STRICTLY PROHIBITED. ALL RIGHTS RESERVED.

| - | A | EN-4372 | 08/05/21 | V.V. |
|------|-----|-------------|----------|----------|
| - | - | EN-3478 | 03/12/19 | J.M. |
| ZONE | REV | DESCRIPTION | DATE | APPROVED |



| | | | |
|------------------|--------|--|------|
| BRASSTECH | | 2001 E. CARNEGIE AVE. SANTA ANA, CA 92705 (949) 417-5207 | |
| INCORPORATED | | | |
| DWG NO. | 3289 | REV | A |
| SCALE .400 | REF. - | SHEET 2 | OF 2 |